

UNITED STATES
DEPARTMENT OF THE INTERIOR
BUREAU OF LAND MANAGEMENT

SUBMIT IN TRIPPLICATE*
(Other instructions on re-
verse side)

Form approved.
Budget Bureau No. 1004-0135
Expires August 31, 1985

SUNDRY NOTICES AND REPORTS ON WELLS

(Do not use this form for proposals to drill or to deepen or plug back to a different reservoir.
Use "APPLICATION FOR PERMIT" for such proposals.)

1. OIL WELL <input checked="" type="checkbox"/> GAS WELL <input type="checkbox"/> OTHER <input type="checkbox"/>	7. UNIT AGREEMENT NAME
2. NAME OF OPERATOR TEXACO PRODUCING INC.	8. FARM OR LEASE NAME FEDERAL (USA) "L"
3. ADDRESS OF OPERATOR P.O. Box 3109 MIDLAND, TEXAS 79702	9. WELL NO. 3
4. LOCATION OF WELL (Report location clearly and in accordance with any State requirements.* See also space 17 below.) At surface 1980' FNL + 1675' FEL Unit G	10. FIELD AND POOL, OR WILDCAT Tonto, Seven Rivers
14. PERMIT NO. API No. 30-025-30685	11. SEC., T., R., M., OR BLK. AND SURVEY OR AREA Sec. 14, T-19-S, R-33-E
15. ELEVATIONS (Show whether DF, RT, GR, etc.) GR - 3687	12. COUNTY OR PARISH LEA
	13. STATE NM

16. Check Appropriate Box To Indicate Nature of Notice, Report, or Other Data

NOTICE OF INTENTION TO:

TEST WATER SHUT-OFF	<input type="checkbox"/>	PULL OR ALTER CASING	<input type="checkbox"/>
FRACTURE TREAT	<input type="checkbox"/>	MULTIPLE COMPLETE	<input type="checkbox"/>
SHOOT OR ACIDIZE	<input type="checkbox"/>	ABANDON*	<input type="checkbox"/>
REPAIR WELL	<input type="checkbox"/>	CHANGE PLANS	<input type="checkbox"/>
(Other)	<input type="checkbox"/>		<input type="checkbox"/>

SUBSEQUENT REPORT OF:

WATER SHUT-OFF	<input type="checkbox"/>	REPAIRING WELL	<input type="checkbox"/>
FRACTURE TREATMENT	<input type="checkbox"/>	ALTERING CASING	<input type="checkbox"/>
SHOOTING OR ACIDIZING	<input type="checkbox"/>	ABANDONMENT*	<input type="checkbox"/>
(Other)	<input checked="" type="checkbox"/> COMMENCE DRILLING OPER.		<input checked="" type="checkbox"/>

(NOTE: Report results of multiple completion on Well Completion or Recompletion Report and Log form.)

17. DESCRIBE PROPOSED OR COMPLETED OPERATION. (Clearly state all pertinent details, and give pertinent dates, including estimated date of starting any proposed work. If well is directionally drilled, give subsurface locations and measured and true vertical depths for all markers and zones pertinent to this work.)

Spud 12 1/4" Hole 5:00pm 10-26-89
Run 37 jts 8 5/8" 24# J-55, ST+C CASING SET AT 1507'. CEMENT WITH 1200 SACKS CLASS "H" 2% CaCl₂ by WESTERN. CIRC. 532 SACKS TO PIT. TEST BOP's WITH 3000#. TIH TAG CMT AT 1357', TEST CASING WITH 1000#, 1/2 HOUR 3:30pm to 4:00pm 10-29-89.
TD 7 7/8" Hole - 4450' - AT 6:00 AM 11-2-89. ATLAS LOG GR-CAL-DLL-MSFL + GR-CAL-FDC 4450' to 1507', GR to SURF. RAN 105 jts OF 5 1/2" J-55, LT+C to 4450'. WESTERN CEMENTED WITH 700 SACKS 35/65 Pozmix CLASS "H" WITH 6% GEL, 5% SALT, 1/4# FLOCELE. Followed By 300 SACKS CLASS "H" WITH 2% CaCl₂, 1/4# FLOCELE. CIRC 123 SACKS TO PIT.
RELEASE BASIN RIG 18 AT 6:00 pm 11-3-89

18. I hereby certify that the foregoing is true and correct

SIGNED

C. P. Bas Ruan

TITLE DRILLING SUPERINTENDENT

DATE 11-9-89

(This space for Federal or State office use)

APPROVED BY

CONDITIONS OF APPROVAL, IF ANY:

TITLE

DATE

*See Instructions on Reverse Side

RECEIVED

NOV 20 1989

OCD
HOBBS OFFICE

N. M. OIL & GAS COMMISSION
UNITED STATES
DEPARTMENT OF THE INTERIOR
BUREAU OF LAND MANAGEMENT

30-025-30685
Form approved.
Budget Bureau No. 1004-0136
Expires August 31, 1985

APPLICATION FOR PERMIT TO DRILL, DEEPEN, OR PLUG BACK

1a. TYPE OF WORK
DRILL ☒ DEEPEN ☐ PLUG BACK ☐

b. TYPE OF WELL
OIL WELL ☒ GAS WELL ☐ OTHER ☐

2. NAME OF OPERATOR
Texaco Producing Inc.

3. ADDRESS OF OPERATOR
P. O. Box 3109, Midland, TX 79702

4. LOCATION OF WELL (Report location clearly and in accordance with any State requirements.)*
At surface
1980' FNL, 1675' FEL unit G
At proposed prod. zone
Same

14. DISTANCE IN MILES AND DIRECTION FROM NEAREST TOWN OR POST OFFICE*
15.5 Miles SSE of Maljamar, New Mexico

15. DISTANCE FROM PROPOSED*
LOCATION TO NEAREST
PROPERTY OR LEASE LINE, FT.
(Also to nearest drlg. unit line, if any)
355'

16. NO. OF ACRES IN LEASE
520

17. NO. OF ACRES ASSIGNED
TO THIS WELL
40

18. DISTANCE FROM PROPOSED LOCATION*
TO NEAREST WELL, DRILLING, COMPLETED,
OR APPLIED FOR, ON THIS LEASE, FT.
991'

19. PROPOSED DEPTH
4450

20. ROTARY OR CABLE TOOLS
Rotary

21. ELEVATIONS (Show whether DF, RT, GR, etc.)
3687GR

22. APPROX. DATE WORK WILL START*
Sept. 20, 1989

PROPOSED CASING AND CEMENTING PROGRAM

SIZE OF HOLE	SIZE OF CASING	WEIGHT PER FOOT	SETTING DEPTH	QUANTITY OF CEMENT
17-1/2"	13-3/8"	48#	40'	Redimix to Surface
12-1/4"	8-5/8"	24#	1500'	1200 Sacks Cement
7-7/8"	5-1/2"	15.5#	4450'	925 Sacks

CEMENTING PROGRAM

Surface Casing: 1200 sacks Class "H" with 2% CaCl₂ (15.6 ppg, 1.19 cu.ft/sx, 5.2 gal water/sx)
Production Casing: 625 sacks 35/65 Pozmix Class "H" with 6% Gel, 5% Salt, 1/4# Flocele
(12.8 ppg, 1.87 cu.ft/sx, 10 gal water/sx)
Followed by: 300 sacks Class "H" with 1/4# Flocele, 2% CaCl₂ (15.6 ppg, 1.18 cu.ft/sx, 5.2 gal water/sx)
There are no other wells in this 1/4 1/4 Section.

RECEIVED
SEP 8 10 24 AM '89
CARLISLE
AREA ENGINEER'S OFFICE

IN ABOVE SPACE DESCRIBE PROPOSED PROGRAM: If proposal is to deepen or plug back, give data on present productive zone and proposed new productive zone. If proposal is to drill or deepen directionally, give pertinent data on subsurface locations and measured and true vertical depths. Give blowout preventer program, if any.

24. SIGNED C. Wade Howard TITLE Engineer's Assistant DATE Sept. 5, 1989

PERMIT NO. _____ APPROVAL DATE _____
APPROVED BY C. Wade Howard TITLE _____ DATE 9-28-89
CONDITIONS OF APPROVAL, IF ANY: _____

*See Instructions On Reverse Side

Title 18 U.S.C. Section 1001, makes it a crime for any person knowingly and willfully to make to any department or agency of the United States any false, fictitious or fraudulent statements or representations as to any matter within its jurisdiction.

RECEIVED

SEP 29 1989

OCD
HOBBS OFFICE

OIL CONSERVATION DIVISION

DISTRICT I
P.O. Box 1980, Hobbs, NM 88240

P.O. Box 2088

Santa Fe, New Mexico 87504-2088

DISTRICT II
P.O. Drawer DD, Artesia, NM 88210

DISTRICT III
1000 Rio Brazos Rd., Aztec, NM 87410

WELL LOCATION AND ACREAGE DEDICATION PLAT

All Distances must be from the outer boundaries of the section

Operator Texaco Producing Inc.			Lease Federal (USA) "L"		Well No. 3
Unit Letter G	Section 14	Township 19 South	Range 33 East	County NMPM Lea County	

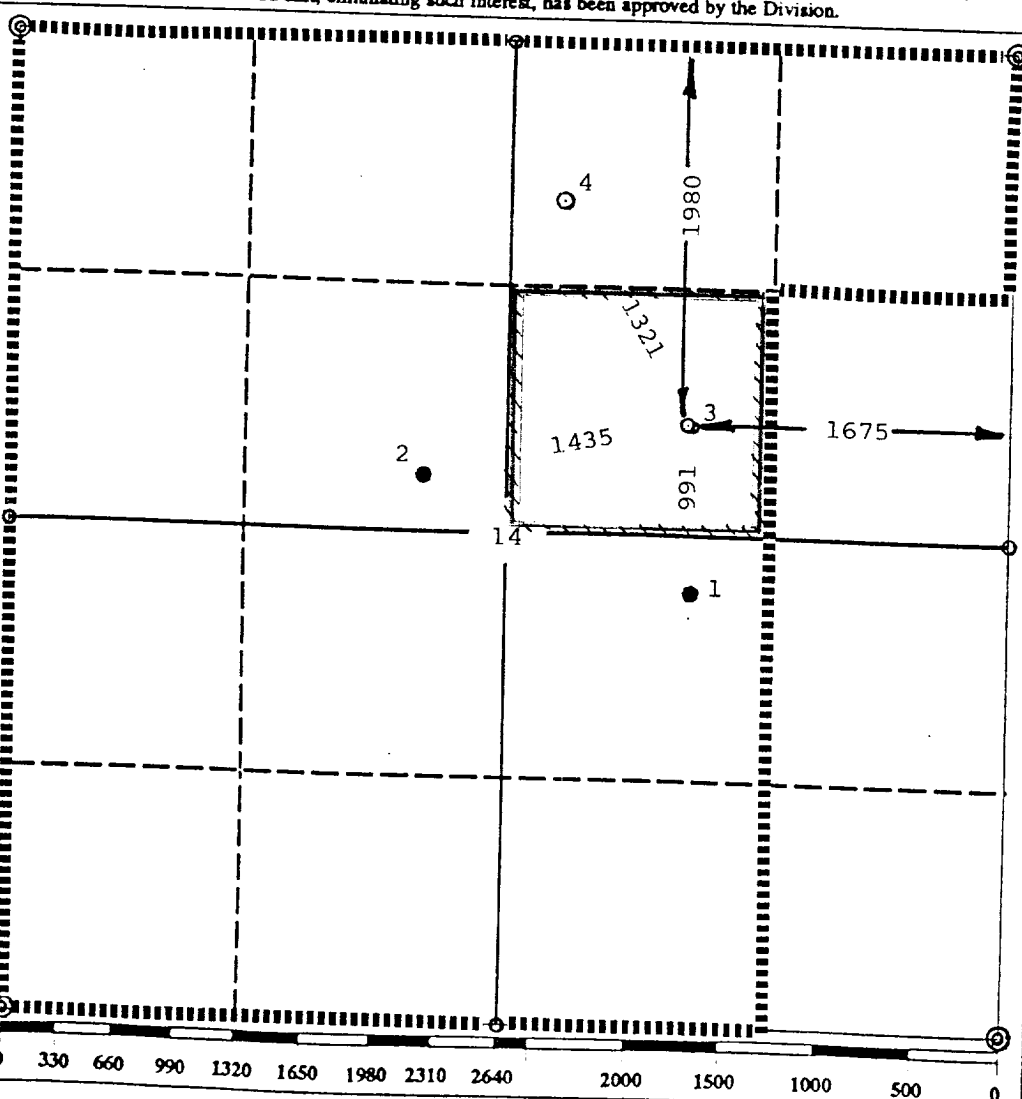
Actual Footage Location of Well:

1980 feet from the North line and		1675 feet from the East line	
Ground level Elev. 3687	Producing Formation Yates	Pool Tonto-Seven Rivers	Dedicated Acreage: 40 Acres

1. Outline the acreage dedicated to the subject well by colored pencil or hatchure marks on the plat below.
2. If more than one lease is dedicated to the well, outline each and identify the ownership thereof (both as to working interest and royalty).
3. If more than one lease of different ownership is dedicated to the well, have the interest of all owners been consolidated by communitization, unitization, force-pooling, etc.?
☐ Yes ☐ No If answer is "yes" type of consolidation _____

If answer is "no" list the owners and tract descriptions which have actually been consolidated. (Use reverse side of this form if necessary.)

No allowable will be assigned to the well until all interests have been consolidated (by communitization, unitization, forced-pooling, or otherwise) or until a non-standard unit, eliminating such interest, has been approved by the Division.



OPERATOR CERTIFICATION

I hereby certify that the information contained herein is true and complete to the best of my knowledge and belief.

Signature <i>Royce D. Mariott</i>
Printed Name Royce D. Mariott
Position Division Surveyor
Company Texaco Producing Inc.
Date 8/21/89

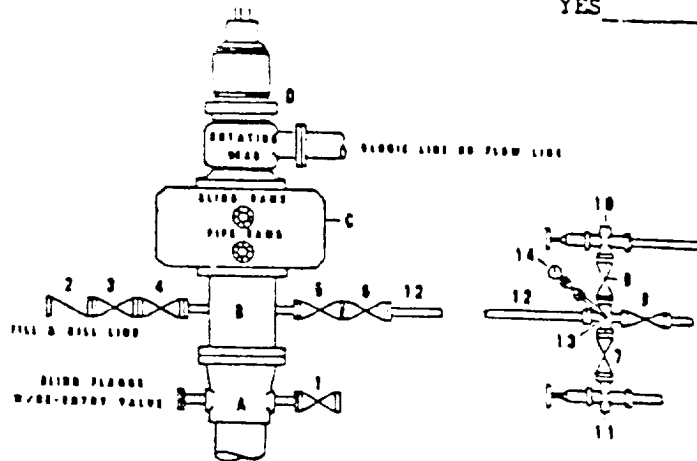
SURVEYOR CERTIFICATION

I hereby certify that the well location shown on this plat was plotted from field notes of actual surveys made by me or under my supervision, and that the same is true and correct to the best of my knowledge and belief.

Date Surveyed 8/17/89
Signature & Seal of Professional Surveyor <i>J. Star Lips</i>
Certificate No. 7254

DRILLING CONTROL
CONDITION II-B 3000 WP
FOR AIR DRILLING OR
WHERE YATES AIR BLOWS ARE EXPECTED

H₂S TRIM REQUIRED
 YES _____ NO _____



DRILLING CONTROL

MATERIAL LIST - CONDITION II - B
FOR AIR DRILLING

- A Texaco Wellhead
- B 3000# W.P. drilling spool with a 2" minimum flanged outlet for kill-line and 3" minimum flanged outlet for choke line
- C 3000# W.P. Dual ram type preventer, hydraulic operated with 1" steel, 3000# W.P. control lines (where sub-structure height is adequate, 2-3000# W.P. single ram type preventers may be utilized.)
- D Rotating Head and extended Blosie Line.
- 1,3,4, 7,8 2" minimum 3000# W.P. flanged full opening steel gate valve, or Halliburton Lo Torc Plug valve.
- 2 2" minimum 3000# W.P. back pressure valve
- 5,6,9 3" minimum 3000# W.P. flanged full opening steel gate valve, or Halliburton Lo Torc Plug valve.
- 12 3" minimum schedule 80, Grade "B", seamless line pipe
- 13 2" minimum x 3" minimum 3000# W.P. flanged ends
- 10, 11 2" minimum 3000# W.P. adjustable choke bodies
- 14 Cameron Mud Gauge or equivalent (location optional in choke line.)



TEXACO, INC
 MIDLAND DIVISION
 MIDLAND, TEXAS



SCALE	DATE	EST NO	DRG NO
DRAWN BY			
CHECKED BY			
APPROVED BY			

EXHIBIT C

68-8-11 8724
173

RECEIVED

SEP 29 1989

OCB
HOBBS OFFICE