

N. M. OIL CON. COMMISSION
UNITED STATES
DEPARTMENT OF THE INTERIOR
BUREAU OF LAND MANAGEMENT

SUBMIT IN PLICATE
(Other instructions on reverse side)

Form approved.
Budget Bureau No. 1004-0136
Expires August 31, 1985

APPLICATION FOR PERMIT TO DRILL, DEEPEN, OR PLUG BACK

1A. TYPE OF WORK
DRILL ☒ DEEPEN ☐ PLUG BACK ☐

B. TYPE OF WELL
OIL WELL ☒ GAS WELL ☐ OTHER ☐ SINGLE ZONE ☐ MULTIPLE ZONE ☐

2. NAME OF OPERATOR
Texaco Producing Inc.

3. ADDRESS OF OPERATOR
P. O. Box 3109, Midland, TX 79702

4. LOCATION OF WELL (Report location clearly and in accordance with any State requirements.*)
At surface
820' FNL, 2310' FEL
At proposed prod. zone
Same

14. DISTANCE IN MILES AND DIRECTION FROM NEAREST TOWN OR POST OFFICE*
15.5 Miles SSE of Maljamar, New Mexico

15. DISTANCE FROM PROPOSED* LOCATION TO NEAREST PROPERTY OR LEASE LINE, FT. (Also to nearest drlg. unit line, if any)
820'

16. NO. OF ACRES IN LEASE
520

17. NO. OF ACRES ASSIGNED TO THIS WELL
40

18. DISTANCE FROM PROPOSED LOCATION* TO NEAREST WELL, DRILLING, COMPLETED, OR APPLIED FOR, ON THIS LEASE, FT.
1321'

19. PROPOSED DEPTH
4450

20. ROTARY OR CABLE TOOLS
Rotary

21. ELEVATIONS (Show whether DF, RT, GR, etc.)
3670GR

22. APPROX. DATE WORK WILL START*
Sept. 28, 1989

5. LEASE DESIGNATION AND SERIAL NO.
NM-56749

6. IF INDIAN, ALLOTTEE OR TRIBE NAME

7. UNIT AGREEMENT NAME

8. FARM OR LEASE NAME
Federal (USA) "L"

9. WELL NO.
4

10. FIELD AND POOL, OR WILDCAT
Tonto, Seven Rivers

11. SEC., T., R., M., OR BLK. AND SURVEY OR AREA
Sec. 14, T-19-S, R-33-E

12. COUNTY OR PARISH 13. STATE
Lea NM

PROPOSED CASING AND CEMENTING PROGRAM

SIZE OF HOLE	SIZE OF CASING	WEIGHT PER FOOT	SETTING DEPTH	QUANTITY OF CEMENT
17-1/2"	13-3/8"	48#	40'	Redimix to Surface
12-1/4"	8-5/8"	24#	1500'	1200 Sacks
7-7/8"	5-1/2"	15.5#	4450'	925 Sacks

CEMENTING PROGRAM

Surface Casing: 1200 Sacks Class "H" with 2% CaCl₂ (15.6 ppg, 1.19 cu.ft/sx, 5.2 gals water/sx)

Production Casing: 625 Sacks 35/65 Pozmix Class "H" with 6% Gel, 5% Salt, 1/4# Flocele (12.8 ppg, 1.87 cu.ft/sx, 10 gals water/sx).

Followed by: 300 Sacks Class "H" with 1/4# Flocele, 2% CaCl₂ (15.6 ppg, 1.19 cu.ft/sx, 5.2 Gals water/sx)

There are no other wells in the 1/4 1/4 Section.

IN ABOVE SPACE DESCRIBE PROPOSED PROGRAM: If proposal is to deepen or plug back, give data on present productive zone and proposed new productive zone. If proposal is to drill or deepen directionally, give pertinent data on subsurface locations and measured and true vertical depths. Give blowout preventer program, if any.

24. SIGNED C. Wade Howard C. Wade Howard
TITLE Engineer's Assistant DATE Sept. 5, 1989

(This space for Federal or State office use)

PERMIT NO. _____ APPROVAL DATE _____

APPROVED BY C. Wade Howard TITLE Engineer's Assistant DATE 9-28-89

CONDITIONS OF APPROVAL, IF ANY:

*See Instructions On Reverse Side

Title 18 U.S.C. Section 1001, makes it a crime for any person knowingly and willfully to make to any department or agency of the United States any false, fictitious or fraudulent statements or representations as to any matter within its jurisdiction.

DISTRICT I
P.O. Box 1980, Hobbs, NM 88240

DISTRICT II
P.O. Drawer DD, Artesia, NM 88210

DISTRICT III
1000 Rio Brazos Rd., Aztec, NM 87410

OIL CONSERVATION DIVISION

P.O. Box 2088
Santa Fe, New Mexico 87504-2088

WELL LOCATION AND ACREAGE DEDICATION PLAT

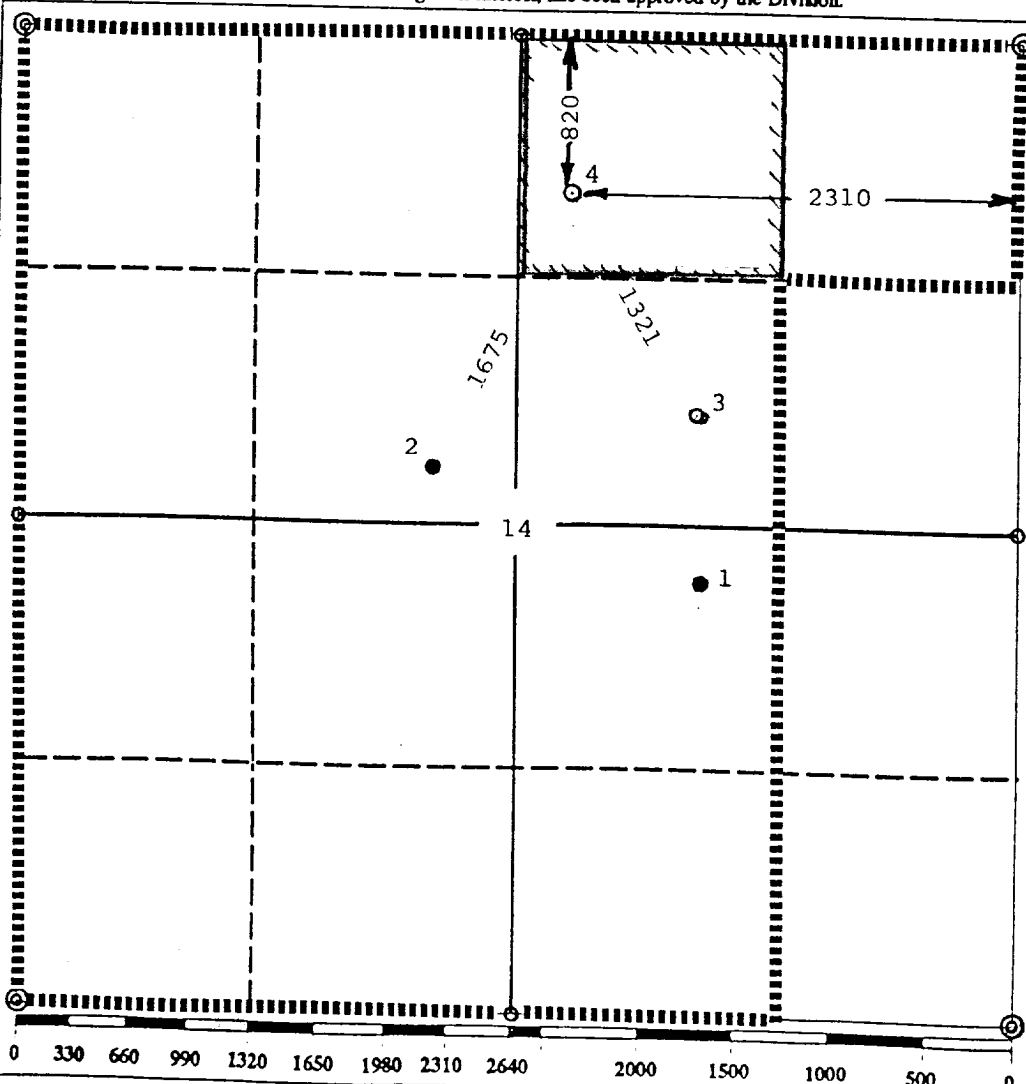
All Distances must be from the outer boundaries of the section

Operator Texaco Producing Inc.			Lease Federal (USA) "L"		Well No. 4
Unit Letter B	Section 14	Township 19 South	Range 33 East	County NMPM Lea County	

Actual Footage Location of Well:

820 feet from the Ground level Elev. 3670	North line and Producing Formation Yates	2310 feet from the Pool Tonto-Seven Rivers	East line Dedicated Acreage: 40 Acres
--	---	---	--

1. Outline the acreage dedicated to the subject well by colored pencil or hatchure marks on the plat below.
2. If more than one lease is dedicated to the well, outline each and identify the ownership thereof (both as to working interest and royalty).
3. If more than one lease of different ownership is dedicated to the well, have the interest of all owners been consolidated by communitization, unitization, force-pooling, etc.?
☐ Yes ☐ No If answer is "yes" type of consolidation _____
If answer is "no" list the owners and tract descriptions which have actually been consolidated. (Use reverse side of this form if necessary.)
No allowable will be assigned to the well until all interests have been consolidated (by communitization, unitization, forced-pooling, or otherwise) or until a non-standard unit, eliminating such interest, has been approved by the Division.



OPERATOR CERTIFICATION

I hereby certify that the information contained herein is true and complete to the best of my knowledge and belief.

Signature
Royce D. Mariott
Printed Name
Royce D. Mariott
Position
Division Surveyor
Company
Texaco Producing Inc.
Date
8/21/89

SURVEYOR CERTIFICATION

I hereby certify that the well location shown on this plat was plotted from field notes of actual surveys made by me or under my supervision, and that the same is true and correct to the best of my knowledge and belief.

Date Surveyed
8/17/89
Signature & Seal of Professional Surveyor
J. Sta. Lopez
Certificate No.
7254

see revised plat

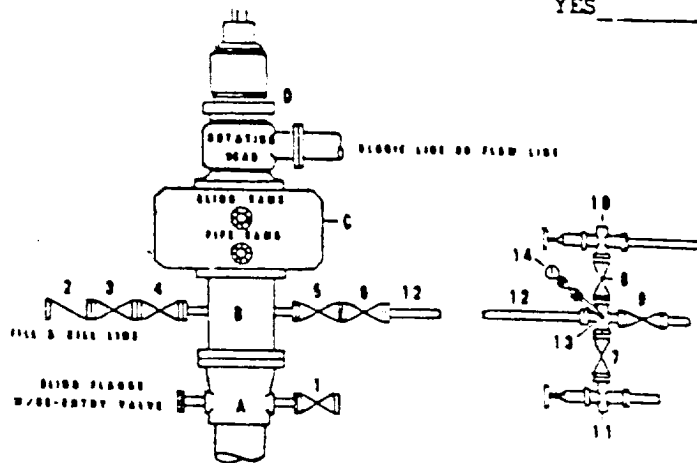
RECEIVED

OCT 2 1989

OCD
HOBBS OFFICE

DRILLING CONTROL
CONDITION II-B 3000 WP
FOR AIR DRILLING OR
WHERE YATES AIR BLOWS ARE EXPECTED

H₂S TRIM REQUIRED
 YES _____ NO _____



DRILLING CONTROL

MATERIAL LIST - CONDITION II - B
FOR AIR DRILLING

- | | |
|---------------|---|
| A | Texaco Wellhead |
| B | 3000# W.P. drilling spool with a 2" minimum flanged outlet for kill-line and 3" minimum flanged outlet for choke line |
| C | 3000# W.P. Dual ram type preventer, hydraulic operated with 1" steel, 3000# W.P. control lines (where sub-structure height is adequate, 2-3000# W.P. single ram type preventers may be utilized.) |
| D | Rotating Head and extended Blow Line. |
| 1,3,4,
7,8 | 2" minimum 3000# W.P. flanged full opening steel gate valve, or Halliburton Lo Torc Plug valve. |
| 2 | 2" minimum 3000# W.P. back pressure valve |
| 5,6,9 | 3" minimum 3000# W.P. flanged full opening steel gate valve, or Halliburton Lo Torc Plug valve. |
| 12 | 3" minimum schedule 80, Grade "B", seamless line pipe |
| 13 | 2" minimum x 3" minimum 3000# W.P. flanged cross |
| 10, 11 | 2" minimum 3000# W.P. adjustable choke bodies |
| 14 | Cameron Mud Gauge or equivalent (location optional in choke line.) |



TEXACO, INC.
 MIDLAND DIVISION
 MIDLAND, TEXAS



SCALE	DATE	EST NO	DRG NO
DRAWN BY			
CHECKED BY			
APPROVED BY			

EXHIBIT C