

Submit to Appropriate  
District Office  
State Lease - 4 copies  
Fee Lease - 3 copies

State of New Mexico  
Energy, Minerals and Natural Resources Department

Form C-102  
Revised 1-1-89

OIL CONSERVATION DIVISION

DISTRICT I  
P.O. Box 1980, Hobbs, NM 88240

P.O. Box 2088

Santa Fe, New Mexico 87504-2088

DISTRICT II  
P.O. Drawer DD, Artesia, NM 88210

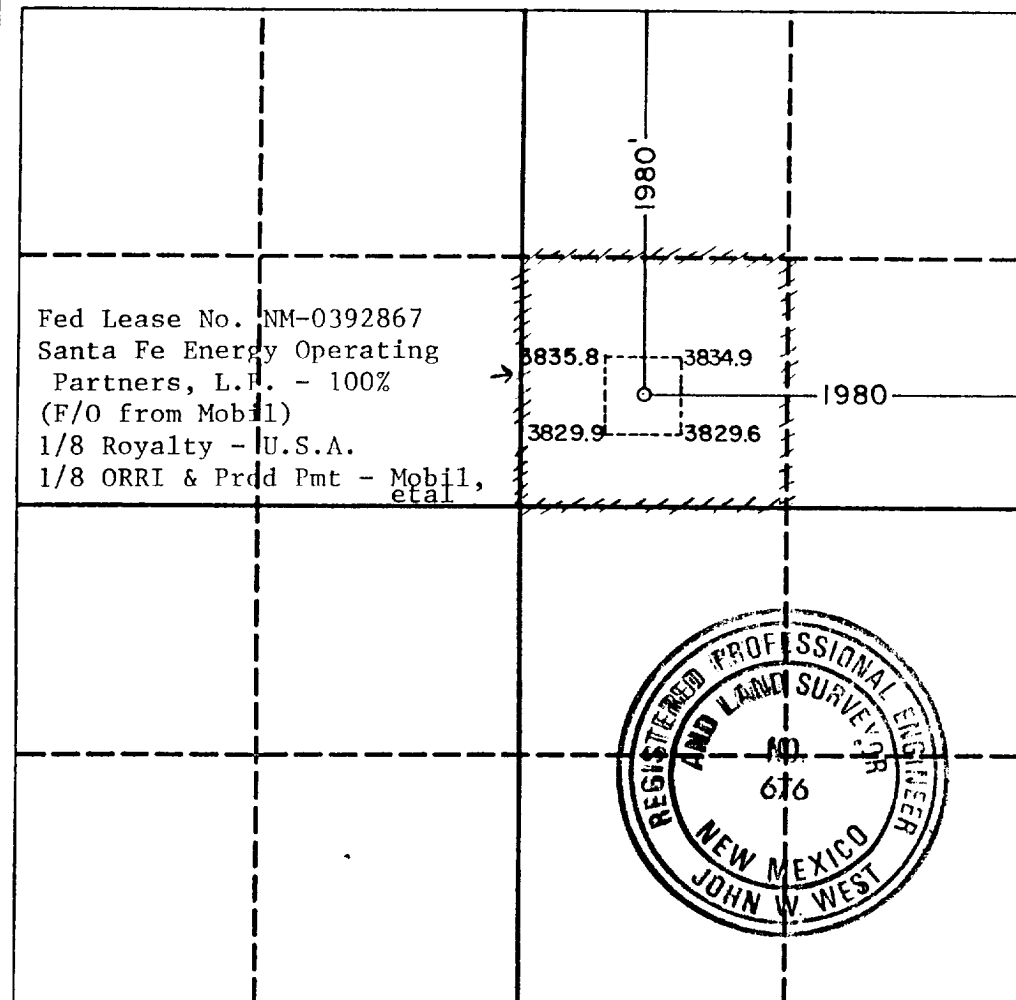
DISTRICT III  
1000 Rio Brazos Rd., Aztec, NM 87410

WELL LOCATION AND ACREAGE DEDICATION PLAT

All Distances must be from the outer boundaries of the section

Operator SANTA FE ENERGY OPERATING PARTNERS LP			Lease UNCLE SAM FEDERAL 13		Well No. 2
Unit Letter G	Section 13	Township 18 South	Range 32 East	County Lea	
Actual Footage Location of Well: 1980 feet from the North line and 1980 feet from the East line					
Ground level Elev. 3831.4	Producing Formation Delaware	Pool Und. West Corbin Delaware	Dedicated Acreage: 40 Acres		

- Outline the acreage dedicated to the subject well by colored pencil or hatchure marks on the plat below.
- If more than one lease is dedicated to the well, outline each and identify the ownership thereof (both as to working interest and royalty).
- If more than one lease of different ownership is dedicated to the well, have the interest of all owners been consolidated by communization, unitization, force-pooling, etc.?  
☐ Yes ☒ No If answer is "yes" type of consolidation \_\_\_\_\_  
If answer is "no" list the owners and tract descriptions which have actually been consolidated. (Use reverse side of this form if necessary). \_\_\_\_\_  
No allowable will be assigned to the well until all interests have been consolidated (by communization, unitization, forced-pooling, or otherwise) or until a non-standard unit, eliminating such interest, has been approved by the Division.



Fed Lease No. NM-0392867  
Santa Fe Energy Operating  
Partners, L.P. - 100%  
(F/O from Mobil)  
1/8 Royalty - U.S.A.  
1/8 ORRI & Prod Pmt - Mobil,  
et al

OPERATOR CERTIFICATION

I hereby certify that the information  
contained herein is true and complete to the  
best of my knowledge and belief.

Signature  
*Michael R. Burton*  
Printed Name  
Michael R. Burton  
Position  
District Drilling Engineer  
Company  
Santa Fe Energy  
Operating Partners, L.P.  
Date  
February 21, 1990

SURVEYOR CERTIFICATION

I hereby certify that the well location shown  
on this plat was plotted from field notes of  
actual surveys made by me or under my  
supervision, and that the same is true and  
correct to the best of my knowledge and  
belief.

Date Surveyed  
February 12, 1990  
Signature & Seal of  
Professional Surveyor  
*Ronald J. Eidson*  
Certificate No. JOHN W. WEST, 676  
RONALD J. EIDSON, 3239