

APPLICATION FOR PERMIT TO DRILL, DEEPEN, OR PLUG BACK

1a. TYPE OF WORK DRILL <input checked="" type="checkbox"/> DEEPEN <input type="checkbox"/> PLUG BACK <input type="checkbox"/>			5. LEASE DESIGNATION AND SERIAL NO. NM-56749	
b. TYPE OF WELL OIL WELL <input checked="" type="checkbox"/> GAS WELL <input type="checkbox"/> OTHER <input type="checkbox"/>			6. IF INDIAN, ALLOTTEE OR TRIBE NAME	
2. NAME OF OPERATOR TEXACO PRODUCING INC.			7. UNIT AGREEMENT NAME	
3. ADDRESS OF OPERATOR P. O. Box 3109, Midland, Texas 79702			8. FARM OR LEASE NAME FEDERAL (USA) -L-	
4. LOCATION OF WELL (Report location clearly and in accordance with any State requirements.*) At surface 990' FSL & 1650' FEL, UNIT LETTER: O At proposed prod. zone SAME			9. WELL NO. 5	
14. DISTANCE IN MILES AND DIRECTION FROM NEAREST TOWN OR POST OFFICE* 15.5 MILES SSE OF MALJAMAR, NEW MEXICO			10. FIELD AND POOL, OR WILDCAT TONTO-SEVEN RIVERS	
15. DISTANCE FROM PROPOSED* LOCATION TO NEAREST PROPERTY OR LEASE LINE, FT. (Also to nearest drig. unit line, if any) 330'			11. SEC., T., R., M., OR BLK. AND SURVEY OR AREA SEC. 14, T-19-S, R-33-E	
16. NO. OF ACRES IN LEASE 520			12. COUNTY OR PARISH LEA	
17. NO. OF ACRES ASSIGNED TO THIS WELL 40			13. STATE NM	
18. DISTANCE FROM PROPOSED LOCATION* TO NEAREST WELL, DRILLING, COMPLETED, OR APPLIED FOR, ON THIS LEASE, FT. 1320'			20. ROTARY OR CABLE TOOLS ROTARY	
21. ELEVATIONS (Show Whether DF, RT, GR, ETC.) GR-3674'			22. APPROX. DATE WORK WILL START* JULY 20, 1990	

23. PROPOSED CASING AND CEMENTING PROGRAM

HOLE SIZE	CASING SIZE	WEIGHT/FOOT	GRADE	THREAD TYPE	SETTING DEPTH	QUANTITY OF CEMENT
17 1/2	13 3/8	48#	H-40	PE	40'	REDIMIX
12 1/4	8 5/8	24#	K-55	ST&C	1500' CIRCULATED	1500 SACKS
7 7/8	5 1/2	15.5#	K-55	LT&C	4450'	925 SACKS

CEMENTING PROGRAM: CONDUCTOR - REDIMIX.

SURFACE CASING - 600 SACKS CLASS H w/ 2% GEL & 2% CaCl₂ (14.8ppg, 1.38f3/s, 6.5gw/s). F/B 200 SACKS CLASS H w/ 2% CaCl₂ (15.6ppg, 1.19f3/s, 5.2gw/s).

PRODUCTION CASING - 625 SACKS 35/65 POZ CLASS H w/ 6% GEL, 5% SALT & 1/4# FLOCELE (12.8ppg, 1.87f3/s, 10gw/s). F/B 300 SACKS CLASS H w/ 1/4# FLOCELE & 2% CaCl₂ (15.6ppg, 1.19f3/s, 5.2gw/s).

THERE ARE NO OTHER OPERATORS IN THIS QUARTER QUARTER SECTION.

APPROVAL SUBJECT TO
GENERAL REQUIREMENTS AND
SPECIAL STIPULATIONS
ATTACHED

RECEIVED
JUL 12 10 49 AM '90
CARLSBAD RESOURCE AREA

IN ABOVE SPACE DESCRIBE PROPOSED PROGRAM: If proposal is to deepen or plug back, give data on present productive zone and proposed new productive zone. If proposal is to drill or deepen directionally, give pertinent data on subsurface locations and measured and true vertical depths. Give blowout preventer program, if any.

24.  SIGNED Richard L. Munoz TITLE DRILLING SUPERINTENDENT DATE JULY 10, 1990

(This space for Federal or State office use)

PERMIT NO. _____ APPROVAL DATE _____

APPROVED BY Richard L. Munoz TITLE CARLSBAD RESOURCE AREA DATE 7-27-90

CONDITIONS OF APPROVAL, IF ANY:

*See Instructions On Reverse Side

81

AUG 02 1984

1984-12-12

OIL CONSERVATION DIVISION

P.O. Box 2088

Santa Fe, New Mexico 87504-2088

DISTRICT I

P.O. Box 1980, Hobbs, NM 88240

DISTRICT II

P.O. Drawer DD, Artesia, NM 88210

DISTRICT III

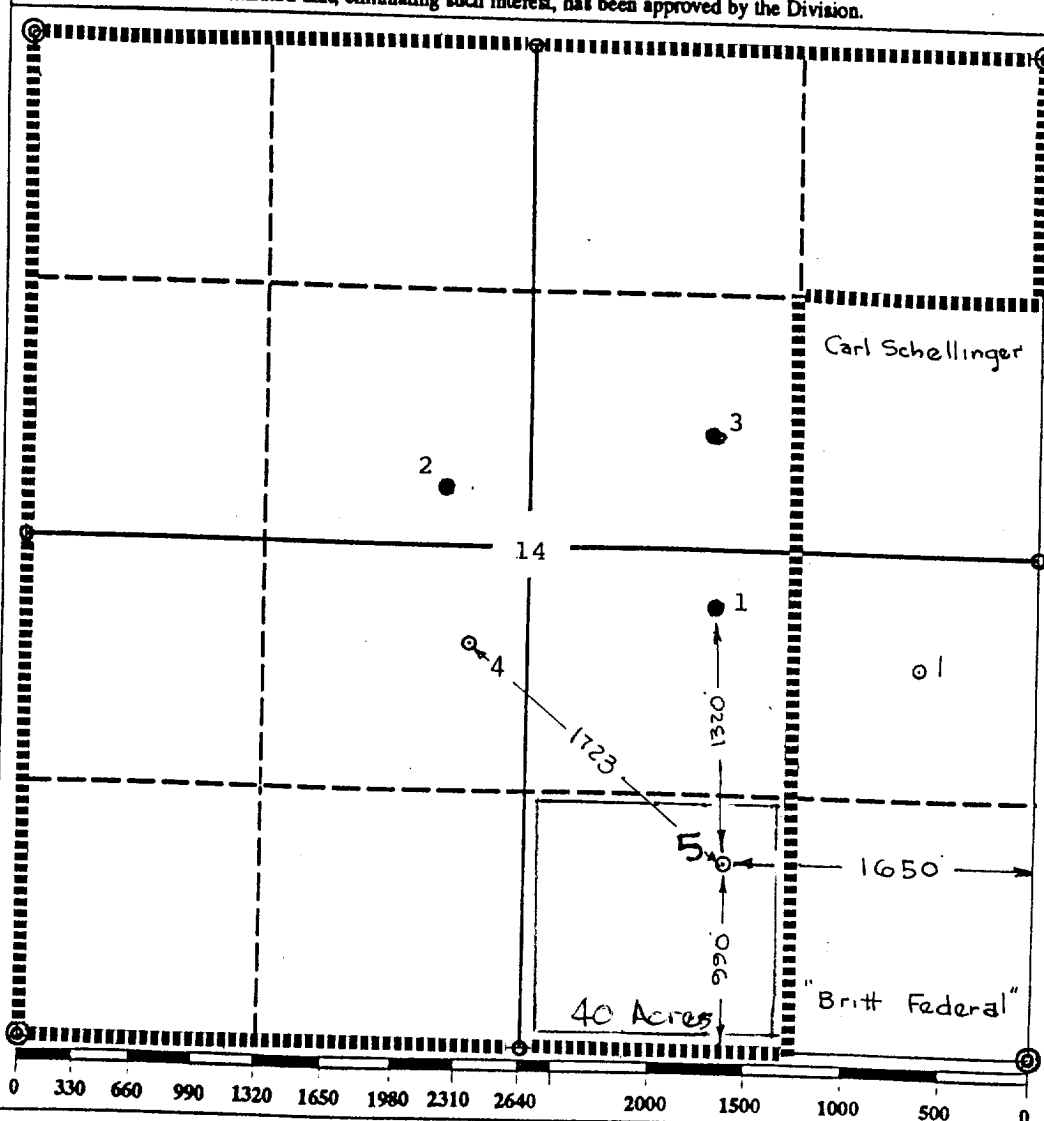
1000 Rio Brazos Rd., Aztec, NM 87410

WELL LOCATION AND ACREAGE DEDICATION PLAT

All Distances must be from the outer boundaries of the section

Operator Texaco Producing Inc.			Lease Federal (USA) "L"		Well No. 5
Unit Letter 0	Section 14	Township 19 South	Range 33 East	County NMPM Lea County	
Actual Footage Location of Well: 990 feet from the South line and 1650 feet from the East line					
Ground level Elev. 3674		Producing Formation Yates		Pool Tonto-Seven Rivers	Dedicated Acreage: 40 Acres

1. Outline the acreage dedicated to the subject well by colored pencil or hatchure marks on the plat below.
2. If more than one lease is dedicated to the well, outline each and identify the ownership thereof (both as to working interest and royalty).
3. If more than one lease of different ownership is dedicated to the well, have the interest of all owners been consolidated by communitization, unitization, force-pooling, etc.?
☐ Yes ☐ No If answer is "yes" type of consolidation _____
If answer is "no" list the owners and tract descriptions which have actually been consolidated. (Use reverse side of this form if necessary.) _____
No allowable will be assigned to the well until all interests have been consolidated (by communitization, unitization, forced-pooling, or otherwise) or until a non-standard unit, eliminating such interest, has been approved by the Division.



OPERATOR CERTIFICATION

I hereby certify that the information contained herein is true and complete to the best of my knowledge and belief.

Signature

Printed Name

Royce D. Mariott

Position

Division Surveyor

Company

Texaco Producing Inc.

Date

June 8, 1990

SURVEYOR CERTIFICATION

I hereby certify that the well location shown on this plat was plotted from field notes of actual surveys made by me or under my supervision, and that the same is true and correct to the best of my knowledge and belief.

Date Surveyed

June 6, 1990

Signature & Seal of
Professional Surveyor

John S. Piper

Certificate No.

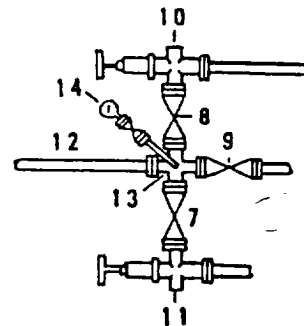
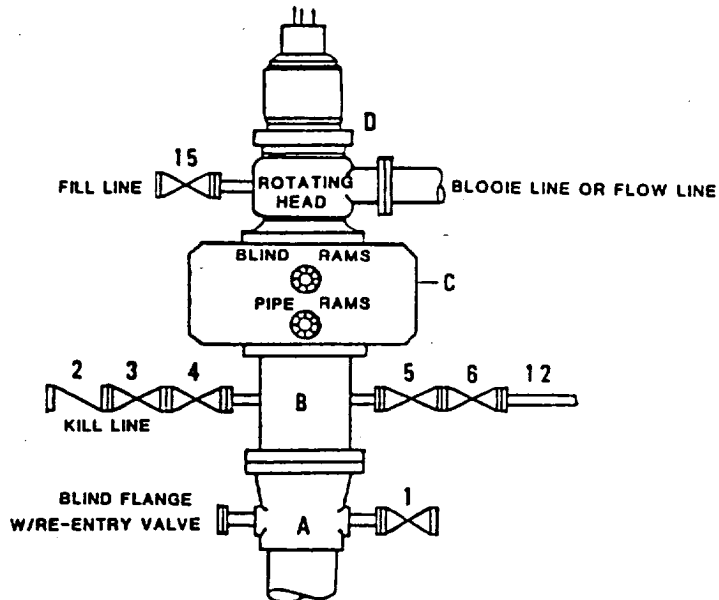
7254 John S. Piper

Sheet 8/8

Exhibit "D"

**DRILLING CONTROL
CONDITION II-B 3000 WP
FOR AIR DRILLING OR
WHERE NITROGEN OR AIR BLOWS ARE EXPECTED**

H₂S TRIM REQUIRED
YES _____ NO _____



DRILLING CONTROL

MATERIAL LIST - CONDITION II - B

- A Texaco Wellhead
- B 3000# W.P. drilling spool with a 2" minimum flanged outlet for kill line and 3" minimum flanged outlet for choke line.
- C 3000# W.P. Dual ram type preventer, hydraulic operated with 1" steel, 3000# W.P. control lines (where sub-structure height is adequate, 2 - 3000# W.P. single ram type preventers may be utilized).
- D Rotating Head with fill up outlet and extended Blooie Line.
- 1,3,4, 7,8, 2" minimum 3000# W.P. flanged full opening steel gate valve, or Halliburton Lo Torc Plug valve.
- 2 2" minimum 3000# W.P. back pressure valve.
- 5,6,9 3" minimum 3000# W.P. flanged full opening steel gate valve, or Halliburton Lo Torc Plug valve.
- 12 3" minimum schedule 80, Grade "B", seamless line pipe.
- 13 2" minimum x 3" minimum 3000# W.P. flanged cross.
- 10,11 2" minimum 3000# W.P. adjustable choke bodies.
- 14 Cameron Mud Gauge or equivalent (location optional in choke line).
- 15 2" minimum 3000# W.P. flanged or threaded full opening steel gate valve, or Halliburton Lo Torc Plug valve.

SCALE:	DATE:	EST. NO.	DRG. NO.
DRAWN BY:			
CHECKED BY:			
APPROVED BY:			



TEXACO, INC.
MIDLAND DIVISION
MIDLAND, TEXAS



EXHIBIT C

HLA 8/29/90

113

1980-1981

AUG 28 1990

HOBBY