

Submit to Appropriate
District Office
State Lease - 6 copies
Fee Lease - 5 copies

State of New Mexico
Energy, Minerals and Natural Resources Department

Form C-101
Revised 1-1-89

OIL CONSERVATION DIVISION

DISTRICT I
P.O. Box 1980, Hobbs, NM 88240

P.O. Box 2088
Santa Fe, New Mexico 87504-2088

DISTRICT II
P.O. Drawer DD, Artesia, NM 88210

DISTRICT III
1000 Rio Brazos Rd., Aztec, NM 87410

API NO. (assigned by OCD on New Wells)

30-025-30965

5. Indicate Type of Lease

STATE ☒

FEE ☐

6. State Oil & Gas Lease No.

B1553

APPLICATION FOR PERMIT TO DRILL, DEEPEN, OR PLUG BACK

1a. Type of Work:

DRILL ☒

RE-ENTER ☐

DEEPEN ☐

PLUG BACK ☐

b. Type of Well:

OIL

WELL ☒

GAS

WELL ☐

OTHER ☐

SINGLE
ZONE ☒

MULTIPLE
ZONE ☐

7. Lease Name or Unit Agreement Name

West Lovington Unit

2. Name of Operator

GREENHILL PETROLEUM CORPORATION

8. Well No.

73

3. Address of Operator

16010 Barker's Point Lane, Suite 325, Houston, TX

9. Pool name or Wildcat

Lovington San Andres West

4. Well Location

Unit Letter 0 : 1305 Feet From The South Line and 1335 Feet From The East Line

Section 4 Township 17S Range 36 E NMPM Lea County

10. Proposed Depth

5230'

11. Formation

San Andres

12. Rotary or C.T.

Rotary

13. Elevations (Show whether DF, RT, GR, etc.)

3881 GR

14. Kind & Status Plug. Bond

Blanket on file

15. Drilling Contractor

TBD

16. Approx. Date Work will start

8/30/90

17.

PROPOSED CASING AND CEMENT PROGRAM

SIZE OF HOLE	SIZE OF CASING	WEIGHT PER FOOT	SETTING DEPTH	SACKS OF CEMENT	EST. TOP
12 1/4	8 5/8	24#	350'	250	Surface
7 7/8	5 1/2	15.5#	5197'	1400	Surface

IN ABOVE SPACE DESCRIBE PROPOSED PROGRAM: IF PROPOSAL IS TO DEEPEN OR PLUG BACK, GIVE DATA ON PRESENT PRODUCTIVE ZONE AND PROPOSED NEW PRODUCTIVE ZONE. GIVE BLOWOUT PREVENTER PROGRAM, IF ANY.

I hereby certify that the information above is true and complete to the best of my knowledge and belief.

SIGNATURE

Michael J. Newport

TITLE

Landman

DATE

TYPE OR PRINT NAME

TELEPHONE NO.

(This space for State Use)

APPROVED BY

TITLE

DATE

CONDITIONS OF APPROVAL, IF ANY:

772-2869

Permit Expires 6 Months From Approval
Date Unless Drilling Underway.

AUG 07 1990

• *Journal of the American Academy of Child and Adolescent Psychiatry* 44:103-110, 2005

GREENHILL PETROLEUM CORPORATION
B O P PROGRAM FOR
WEST LOVINGTON UNIT #73

<u>Casing Program</u>				<u>B O P Program</u>	
<u>Size</u>	<u>Depth</u>	<u>Wt</u>	<u>Grade</u>	<u>Configuration</u>	<u>Test Program</u>
8 5/8"	350'	24#	J55,STC	RR or RA	250/1500 psi
5 1/2"	5230'	15.5#	J55,STC	N/A	

*RR - Ram Ram
RA - Ram Annular

Submit to Appropriate
District Office
State Lease - 4 copies
Fee Lease - 3 copies

State of New Mexico
Energy, Minerals and Natural Resources Department

Form C-102
Revised 1-1-89

OIL CONSERVATION DIVISION

P.O. Box 2088
Santa Fe, New Mexico 87504-2088

DISTRICT I
P.O. Box 1980, Hobbs, NM 88240

DISTRICT II
P.O. Drawer DD, Artesia, NM 88210

DISTRICT III
1000 Rio Brazos Rd., Aztec, NM 87410

WELL LOCATION AND ACREAGE DEDICATION PLAT

All Distances must be from the outer boundaries of the section

Operator GREENHILL PETROLEUM CORPORATION			Lease West Lovington Unit		Well No. 73
Unit Letter 0	Section 4	Township 17 South	Range 36 East	County Lea	
Actual Footage Location of Well: 1305 feet from the South line and 1335 feet from the East line					
Ground level Elev. 3881.0	Producing Formation <i>San Andres</i>		Pool <i>Lovington SA West</i>		Dedicated Acreage: 40 Acres

1. Outline the acreage dedicated to the subject well by colored pencil or hatchure marks on the plat below.
2. If more than one lease is dedicated to the well, outline each and identify the ownership thereof (both as to working interest and royalty).
3. If more than one lease of different ownership is dedicated to the well, have the interest of all owners been consolidated by communitization, unitization, force-pooling, etc.?
☐ Yes ☐ No If answer is "yes" type of consolidation *Unitized*
If answer is "no" list the owners and tract descriptions which have actually been consolidated. (Use reverse side of this form if necessary.)
No allowable will be assigned to the well until all interests have been consolidated (by communitization, unitization, forced-pooling, or otherwise) or until a non-standard unit, eliminating such interest, has been approved by the Division.

OPERATOR CERTIFICATION

I hereby certify that the information contained herein is true and complete to the best of my knowledge and belief.

Signature *Michael J. Newport*
Printed Name *Michael J. Newport*
Position
Company *Greenhill Pet Corp*
Date *8-2-90*

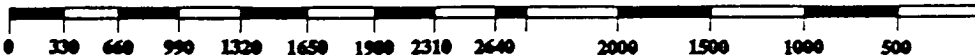
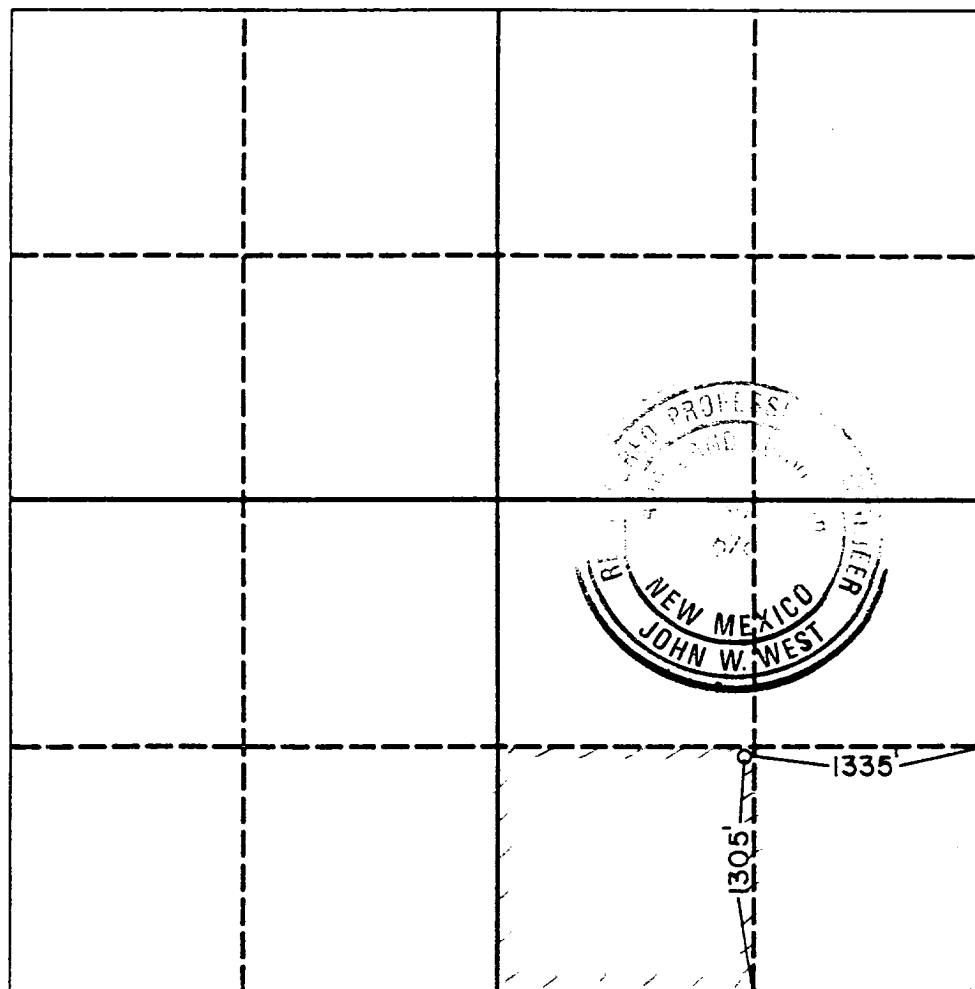
SURVEYOR CERTIFICATION

I hereby certify that the well location shown on this plat was plotted from field notes of actual surveys made by me or under my supervision, and that the same is true and correct to the best of my knowledge and belief.

Date Surveyed July 19, 1990

Signature & Seal of Professional Surveyor

John W. West
Certificate No. JOHN W. WEST, 676
RONALD J. EIDSON, 3239



Submit to Appropriate
District Office
State Lease - 4 copies
Fee Lease - 3 copies

State of New Mexico
Agry, Minerals and Natural Resources Depart

Form C-102
Revised 1-1-89

OIL CONSERVATION DIVISION

P.O. Box 2088

Santa Fe, New Mexico 87504-2088

DISTRICT I
P.O. Box 1980, Hobbs, NM 88240

DISTRICT II
P.O. Drawer DD, Artesia, NM 88210

DISTRICT III
1000 Rio Rancho Rd., Artesia, NM 87430

WELL LOCATION AND ACREAGE DEDICATION PLAT

All Distances must be from the outer boundaries of the section

Operator GREENHILL PETROLEUM CORPORATION			Lease West Lovington Unit		Well No. 73
Unit Letter 0	Section 4	Township 17 South	Range 36 East	County Lea	

Actual Footage Location of Well: 1305 feet from the South line and 1335 feet from the East line					
Ground level Elev. 3881.0	Producing Formation San Andres		Foot Lovington SA West		Dedicated Acreage: 40 Acres

1. Outline the acreage dedicated to the subject well by colored pencil or ink on the plat below.
2. If more than one lease is dedicated to the well, outline each and identify the ownership thereof (both as to working interest and royalty).
3. If more than one lease of different ownership is dedicated to the well, have the interest of all owners been consolidated by communitization, unitization, force-pooling, etc.?
☐ Yes ☐ No If answer is "yes" type of consolidation **Unitized**
If answer is "no" list the owners and tract descriptions which have actually been consolidated. (Use reverse side of this form if necessary.)
No allowable will be assigned to the well until all interests have been consolidated (by communitization, unitization, forced-pooling, or otherwise) or until a non-standard unit, eliminating such interest, has been approved by the Division.

OPERATOR CERTIFICATION

I hereby certify that the information contained herein is true and complete to the best of my knowledge and belief.

Signature
Michael J. Newport
Printed Name
Michael J. Newport
Position

Company
Greenhill Pet Corp
Date
8-2-90

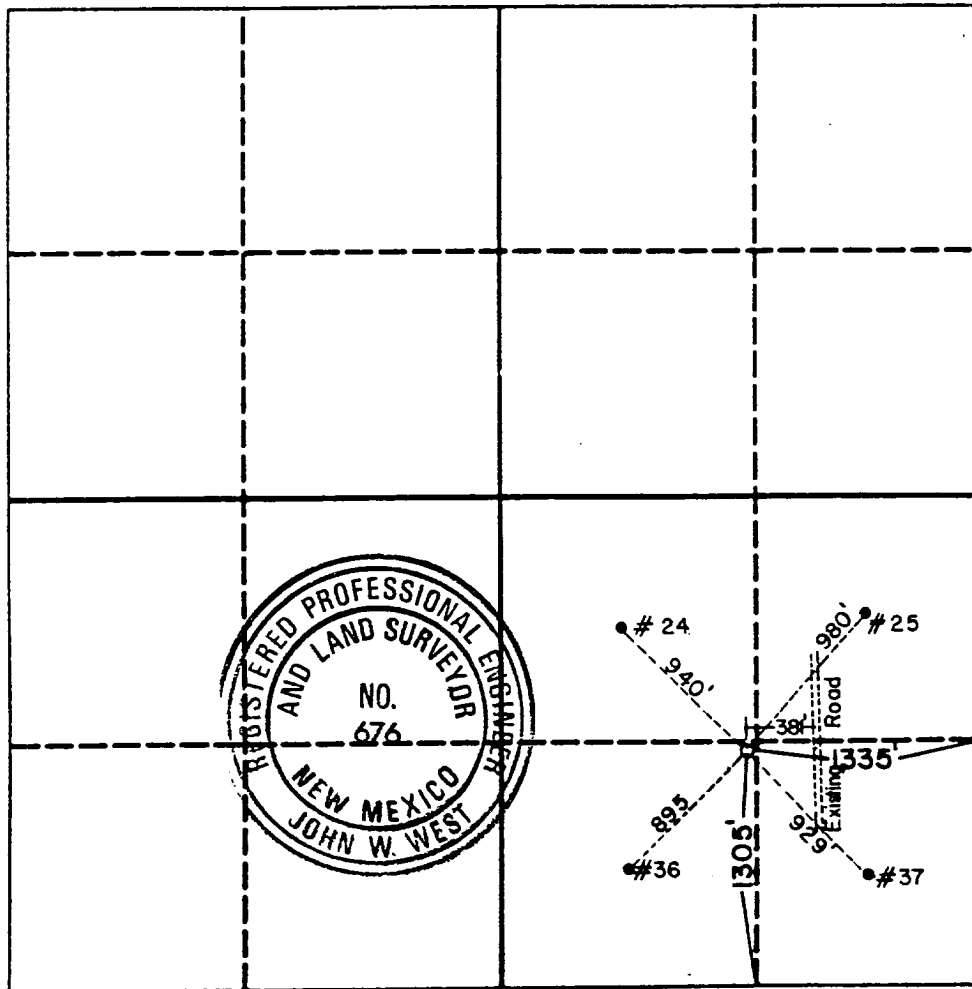
SURVEYOR CERTIFICATION

I hereby certify that the well location shown on this plat was plotted from field notes of actual surveys made by me or under my supervision, and that the same is true and correct to the best of my knowledge and belief.

Date Surveyed
July 19, 1990

Signature & Seal of
Professional Surveyor

John W. West
Certification No. **JOHN W. WEST, 676**
RONALD J. EIDSON, 3238



1682/5 2021

173

RECEIVED

AUG 07 1990

CHG
HOBBS OFFICE