

30-025-31048

DEPARTMENT OF THE INTERIOR
BUREAU OF LAND MANAGEMENT

APPLICATION FOR PERMIT TO DRILL, DEEPEN, OR PLUG BACK

1a. TYPE OF WORK

DRILL ☒

DEEPEN ☐

PLUG BACK ☐

b. TYPE OF WELL

OIL
WELL ☒

GAS
WELL ☐

OTHER

SINGLE
ZONE ☐

MULTIPLE
ZONE ☐

2. NAME OF OPERATOR

Harvey E. Yates Company

3. ADDRESS OF OPERATOR

P.O. Box 1933, Roswell, New Mexico 88202

4. LOCATION OF WELL (Report location clearly and in accordance with any State requirements.)*

At surface

660' FSL & 660' FEL

At proposed prod. zone

same

14. DISTANCE IN MILES AND DIRECTION FROM NEAREST TOWN OR POST OFFICE*

6 miles south of Maljamar, N.M.

10. DISTANCE FROM PROPOSED*

LOCATION TO NEAREST
PROPERTY OR LEASE LINE, FT.
(Also to nearest drig. unit line, if any)

660

16. NO. OF ACRES IN LEASE

80

17. NO. OF ACRES ASSIGNED
TO THIS WELL

40

18. DISTANCE FROM PROPOSED LOCATION*

TO NEAREST WELL, DRILLING, COMPLETED,
OR APPLIED FOR, ON THIS LEASE, FT.

1980

19. PROPOSED DEPTH

10,970

20. ROTARY OR CABLE TOOLS

rotary

21. ELEVATIONS (Show whether DF, RT, GR, etc.)

3800.4 GL

22. APPROX. DATE WORK WILL START*

ASAP

23. PROPOSED CASING AND CEMENTING PROGRAM

SIZE OF HOLE	SIZE OF CASING	WEIGHT PER FOOT	SETTING DEPTH	QUANTITY OF CEMENT
17 1/2	13 3/8	54.5	350	Circ to surface
12 1/4	8 5/8	32	3100	Circ to surface
7 7/8	5 1/2	17	10970	600' above pay

MUD PROGRAM:

0 - 350 FW w/paper
350 - 3100 Brine
3100 - 10970 FW mud

APPROVAL SUBJECT TO
GENERAL REQUIREMENTS AND
SPECIAL STIPULATIONS
ATTACHED

IN ABOVE SPACE DESCRIBE PROPOSED PROGRAM: If proposal is to deepen or plug back, give data on present productive zone and proposed new productive zone. If proposal is to drill or deepen directionally, give pertinent data on subsurface locations and measured and true vertical depths. Give blowout preventer program, if any.

24.

SIGNED

A. M. Young

NM Young

TITLE Drilling Superintendent

DATE 10/1/90

(This space for Federal or State office use)

PERMIT NO.

APPROVAL DATE

APPROVED BY

TITLE

DATE

CONDITIONS OF APPROVAL, IF ANY:

*See Instructions On Reverse Side

Title 18 U.S.C. Section 1001, makes it a crime for any person knowingly and willfully to make to any department or agency of the United States any false, fictitious or fraudulent statements or representations as to any matter within its jurisdiction.

RECEIVED
OCT 3 11 04 AM '90
GEOLOGICAL SERVICE
AREA 10

RECEIVED
OCT 29 1962
FBI

Submit to Appropriate
District Office
State Lease - 4 copies
Fee Lease - 3 copies

State of New Mexico
Energy, Minerals and Natural Resources Department

Form C-102
Revised 1-1-89

OIL CONSERVATION DIVISION

P.O. Box 2088

Santa Fe, New Mexico 87504-2088

DISTRICT I

P.O. Box 1980, Hobbs, NM 88240

DISTRICT II

P.O. Drawer DD, Artesia, NM 88210

DISTRICT III

1000 Rio Brazos Rd., Aztec, NM 87410

WELL LOCATION AND ACREAGE DEDICATION PLAT

All Distances must be from the outer boundaries of the section

Operator HARVEY E. YATES CO.			Lease Young Deep Unit		Well No. 28
Unit Letter P	Section 9	Township 18 South	Range 32 East	County Lea	
Actual Footage Location of Well: 660 feet from the South line and 660 feet from the East line					
Ground level Elev. 3800.4	Producing Formation Wolfcamp		Pool Young Wolfcamp	Dedicated Acreage: 40 Acres	

1. Outline the acreage dedicated to the subject well by colored pencil or hatchure marks on the plat below.

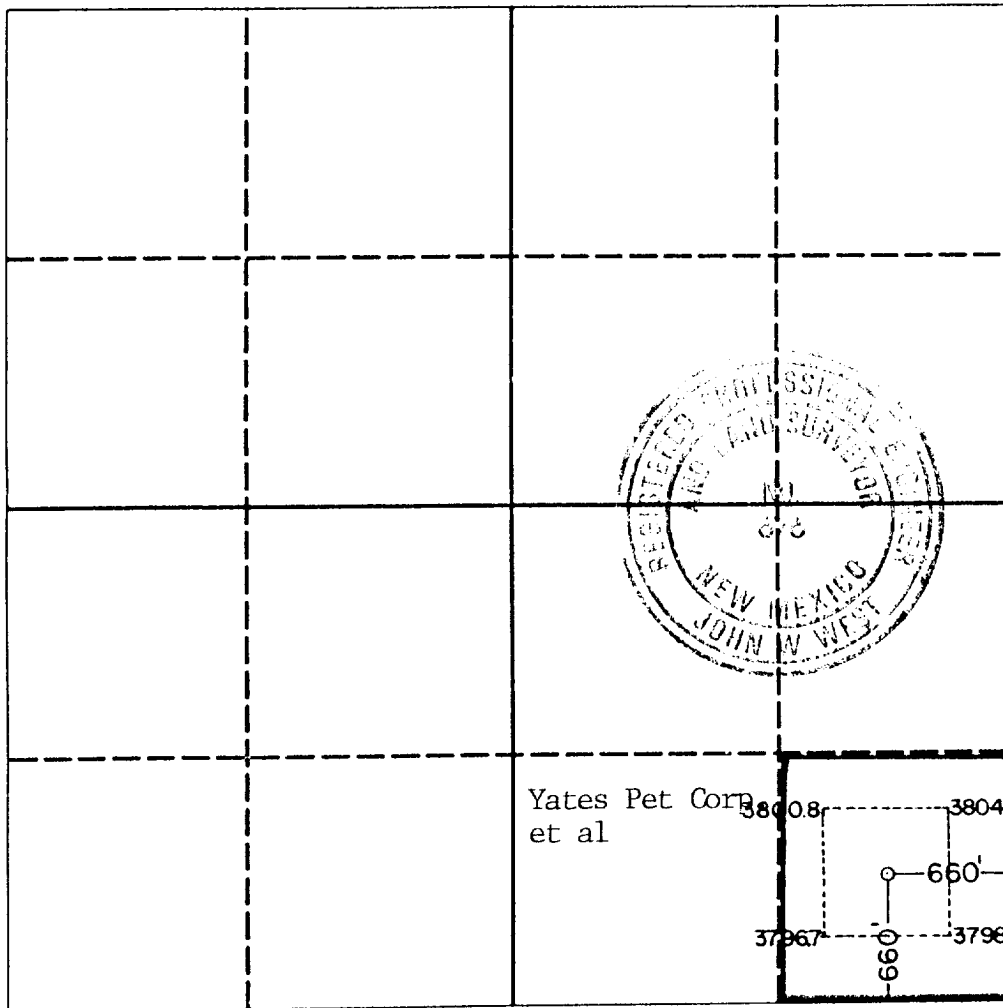
2. If more than one lease is dedicated to the well, outline each and identify the ownership thereof (both as to working interest and royalty).

3. If more than one lease of different ownership is dedicated to the well, have the interest of all owners been consolidated by communitization, unitization, force-pooling, etc.?

☐ Yes ☐ No If answer is "yes" type of consolidation _____

If answer is "no" list the owners and tract descriptions which have actually been consolidated. (Use reverse side of this form if necessary.) _____

No allowable will be assigned to the well until all interests have been consolidated (by communitization, unitization, forced-pooling, or otherwise) or until a non-standard unit, eliminating such interest, has been approved by the Division.



OPERATOR CERTIFICATION

I hereby certify that the information contained herein is true and complete to the best of my knowledge and belief.

Signature

Printed Name

NM Young

Position

Drilling Superintendent

Company

Harvey E. Yates Company

Date

9/27/90

SURVEYOR CERTIFICATION

I hereby certify that the well location shown on this plat was plotted from field notes of actual surveys made by me or under my supervision, and that the same is true and correct to the best of my knowledge and belief.

Date Surveyed

September 21, 1990

Signature & Seal of Professional Surveyor

Certificate No.

JOHN W. WEST

676

RONALD J. EIDSON,

3239

Application
HARVEY E. YATES COMPANY
Young Deep Unit #28
Sec. 9, T18S, R32E
Lea County, New Mexico

In conjunction with Form 3160-3, Application for Permit to Drill the Subject well in Section 9, Township 18 South, Range 32 East, Lea County, New Mexico, Harvey E. Yates Company submits the following ten items of pertinent information in accordance with Bureau of Land Management requirements:

1. The geologic surface formation is quaternary alluvium and bolson deposits and other surficial deposits.
2. The estimated tops of geologic markers are as follow:

Rustler	1150'	Penrose	4040'
Yates	2640'	Grayburg	4345'
7 Rivers	3080'	San Andres	4810'
Bowers	3530'	Delaware	5300'
Queen	3800'	Bone Springs	6200'
		TD	10970'

3. We do not anticipate finding water but have listed the formation in which we anticipate finding oil or gas.

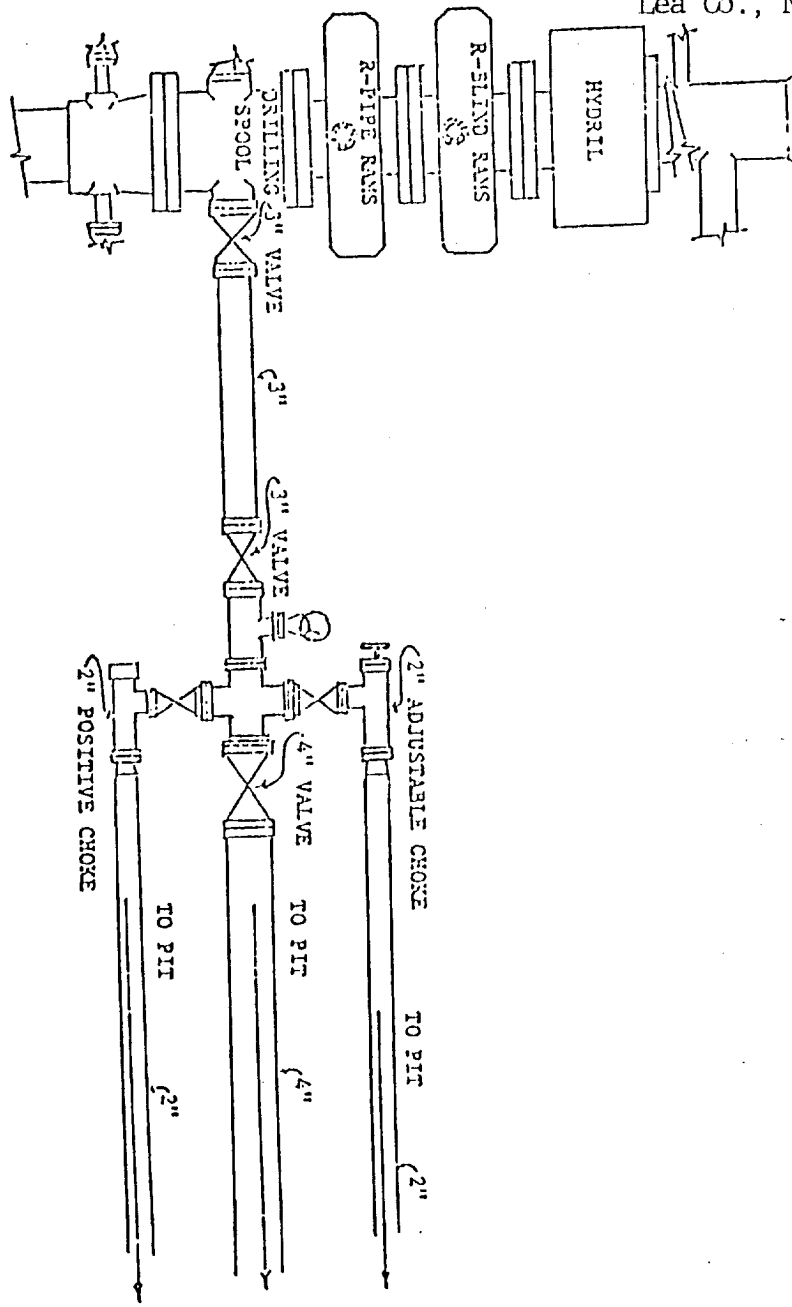
Bone Springs 6200'

4. Proposed casing program: See Form 3160-3. HEYCO will be using some used casing when applicable.
5. Pressure control equipment: See Exhibit C. Although the rig equipment is 3M rated, this well will be a 2M PSI rating.
6. Mud program: See Form 3160-3.
7. Auxiliary equipment: Blowout preventer.
8. Testing, logging and coring programs: We do not plan to core or DST. The planned logs are are DLL-Micro w/GR & Caliper and CN-Den w/GR & Caliper.
9. No abnormal pressures or temperatures are anticipated.
10. Anticipated starting date: As soon as possible.

EXHIBIT "C"

Ha E. Yates Company

Young Deep Unit #28
Sec. 9, T18S, R32E
660' FSL & 660' FEL
Lea Co., New Mexico



Rec'd 4-22-92

ELF

RECEIVED

OCT 29 1991

NOV 1 1991