

UNITED STATES
DEPARTMENT OF THE INTERIOR
BUREAU OF LAND MANAGEMENT

SUBMIT IN TRIPLICATE
(Other instructions on
reverse side)

30-025-31093
Form approved.
Budget Bureau No. 1004-0136
Expires August 31, 1985

APPLICATION FOR PERMIT TO DRILL, DEEPEN, OR PLUG BACK

1a. TYPE OF WORK

DRILL ☒

DEEPEN ☐

PLUG BACK ☐

b. TYPE OF WELL

OIL
WELL ☒

GAS
WELL ☐

OTHER

SINGLE
ZONE ☐

MULTIPLE
ZONE ☐

2. NAME OF OPERATOR

Harvey E. Yates Company

3. ADDRESS OF OPERATOR

P.O. Box 1933, Roswell, New Mexico 88202

4. LOCATION OF WELL (Report location clearly and in accordance with any State requirements.)*

At surface

I; 1980' FSL & 660' FEL

At proposed prod. zone

same

14. DISTANCE IN MILES AND DIRECTION FROM NEAREST TOWN OR POST OFFICE*

5 miles south of Maljamar, N.M.

10. DISTANCE FROM PROPOSED*

LOCATION TO NEAREST
PROPERTY OR LEASE LINE, FT.
(Also to nearest drlg. unit line, if any)

660'

16. NO. OF ACRES IN LEASE

80

17. NO. OF ACRES ASSIGNED
TO THIS WELL

40

18. DISTANCE FROM PROPOSED LOCATION*

TO NEAREST WELL, DRILLING, COMPLETED,
OR APPLIED FOR, ON THIS LEASE, FT.

N/A

19. PROPOSED DEPTH

11,900

20. ROTARY OR CABLE TOOLS

Rotary

21. ELEVATIONS (Show whether DF, RT, GR, etc.)

3809.2 GL

22. APPROX. DATE WORK WILL START*

ASAP

23. PROPOSED CASING AND CEMENTING PROGRAM

SIZE OF HOLE	SIZE OF CASING	WEIGHT PER FOOT	SETTING DEPTH	QUANTITY OF CEMENT
17 1/2	13 3/8	54.5	400	Circ to surface
12 1/4	8 5/8	32	3500	Circ to surface
7 7/8	5 1/2	17	11,900	500' above pay(see stips)

MUD PROGRAM:

0 - 400 FW mud
400 - 3500 Brine Water
3500 - 11900 FW mud

APPROVAL SUBJECT TO
GENERAL REQUIREMENTS AND
SPECIAL STIPULATIONS
ATTACHED

APPROVAL OF THIS APPLICATION DOES NOT WARRANT
OR CERTIFY THAT THE APPLICANT HOLDS LEGAL
EQUITABLE TITLE TO THE LANDS IN THE SUBJECT
LEASE WHICH WOULD ENTITLE THE APPLICANT TO
CONDUCT OPERATIONS THEREON.

IN ABOVE SPACE DESCRIBE PROPOSED PROGRAM: If proposal is to deepen or plug back, give data on present productive zone and proposed new productive zone. If proposal is to drill or deepen directionally, give pertinent data on subsurface locations and measured and true vertical depths. Give blowout preventer program, if any.

24.

SIGNED

[Signature]

NM Young

TITLE

Drilling Superintendent

DATE 11/12/90

(This space for Federal or State office use)

PERMIT NO.

APPROVAL DATE

APPROVED BY

TITLE

APPROVED

DATE

12-4-90

CONDITIONS OF APPROVAL, IF ANY:

*See Instructions On Reverse Side

Title 18 U.S.C. Section 1001, makes it a crime for any person knowingly and willfully to make to any department or agency of the United States any false, fictitious or fraudulent statements or representations as to any matter within its jurisdiction.

OIL CONSERVATION DIVISION

P.O. Box 2088
Santa Fe, New Mexico 87504-2088

NOV - 7 1990

DISTRICT I
P.O. Box 1980, Hobbs, NM 88240

DISTRICT II
P.O. Drawer DD, Artesia, NM 88210

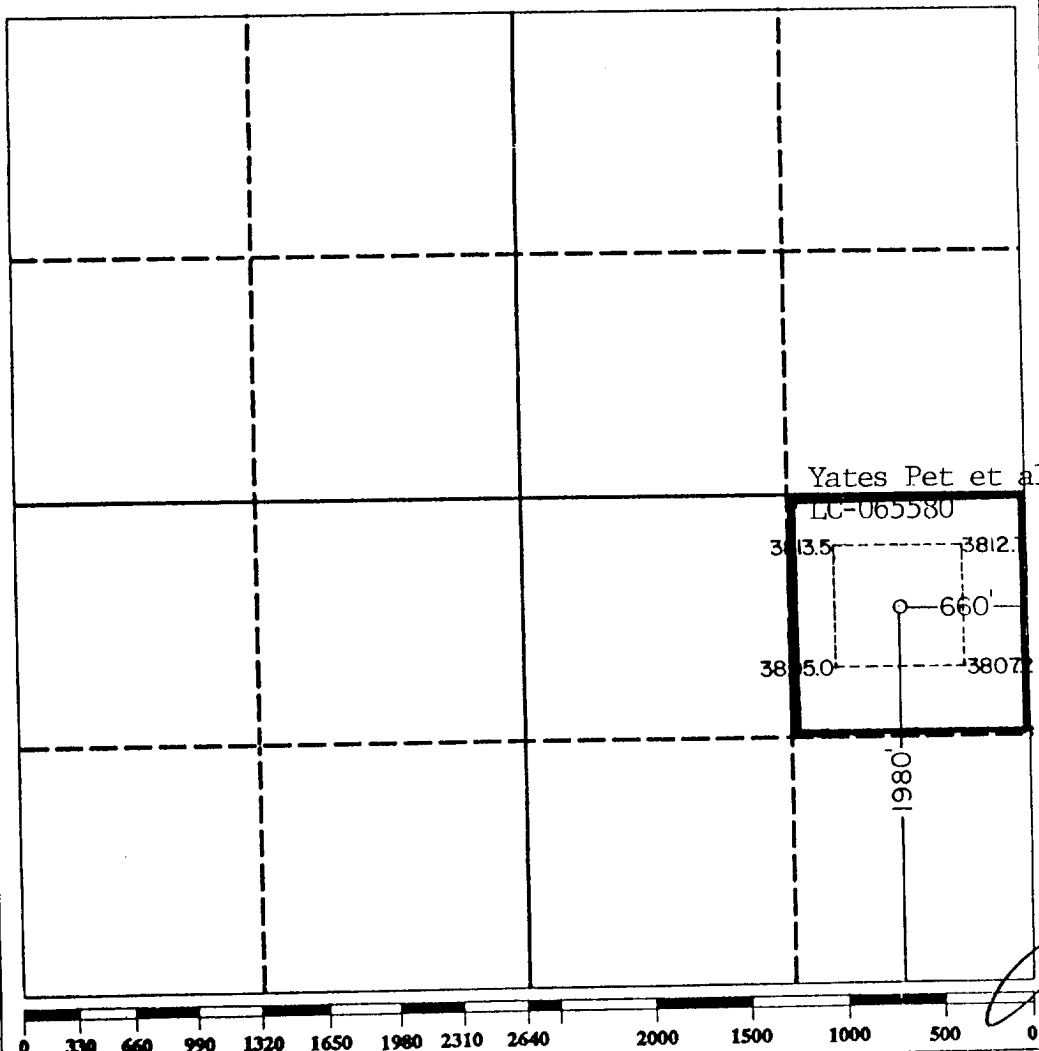
DISTRICT III
1000 Rio Brazos Rd., Aztec, NM 87410

WELL LOCATION AND ACREAGE DEDICATION PLAT

All Distances must be from the outer boundaries of the section

Operator HARVEY E. YATES CO.			Lease Young Deep Unit		Well No. 31
Unit Letter I	Section 9	Township 18 South	Range 32 East	County Lea	
Actual Footage Location of Well: 1980 feet from the South line and 660 feet from the East line					
Ground level Elev. 3809.2	Producing Formation Strawn	Pool Wildcat		Dedicated Acreage: 40 Acres	

1. Outline the acreage dedicated to the subject well by colored pencil or hatchure marks on the plat below.
2. If more than one lease is dedicated to the well, outline each and identify the ownership thereof (both as to working interest and royalty).
3. If more than one lease of different ownership is dedicated to the well, have the interest of all owners been consolidated by communitization, unitization, force-pooling, etc.?
☐ Yes ☐ No If answer is "yes" type of consolidation _____
If answer is "no" list the owners and tract descriptions which have actually been consolidated. (Use reverse side of this form if necessary.) _____
No allowable will be assigned to the well until all interests have been consolidated (by communitization, unitization, forced-pooling, or otherwise) or until a non-standard unit, eliminating such interest, has been approved by the Division.



OPERATOR CERTIFICATION

I hereby certify that the information contained herein is true and complete to the best of my knowledge and belief.

Signature

Printed Name

NM Young

Position

Drilling Superintendent

Company

Harvey E. Yates Company

Date

11/8/90

SURVEYOR CERTIFICATION

I hereby certify that the well location shown on this plat was plotted from field notes of legal surveys made by me or under my supervision, and that the same is true and correct to the best of my knowledge and belief.

Date Surveyed

November 5, 1990

Signature & Seal of
Professional Surveyor

Certified No.

JOHN W. WEST,

676

RONALD J. EIDSON,

3239

Application
HARVEY E. YATES COMPANY
Young Deep Unit #31
Sec. 9, T18S, R32E
Lea County, New Mexico

In conjunction with Form 3160-3, Application for Permit to Drill the Subject well in Section 9, Township 18 South, Range 32 East, Lea County, New Mexico, Harvey E. Yates Company submits the following ten items of pertinent information in accordance with Bureau of Land Management requirements:

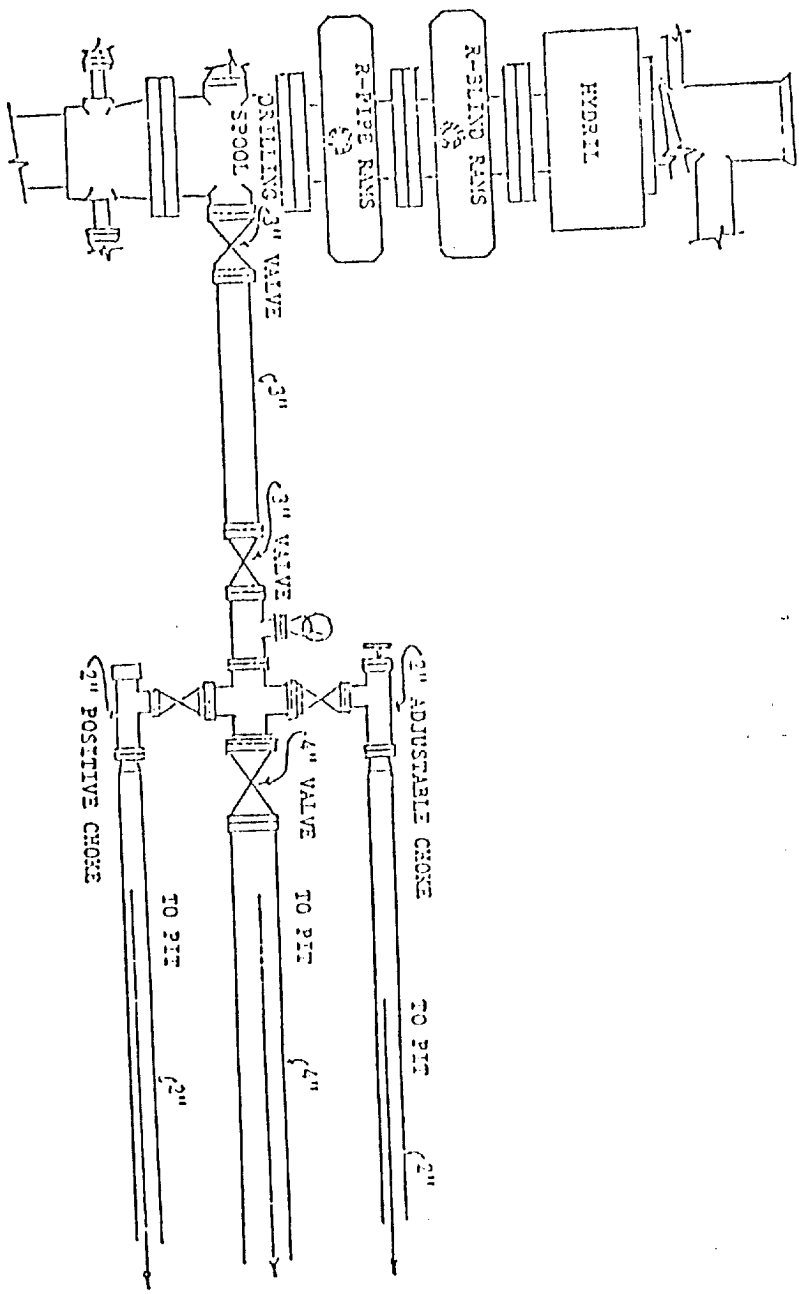
1. The geologic surface formation is quaternary alluvium and bolson deposits and other surficial deposits.
2. The estimated tops of geologic markers are as follow:

Ruslter	1130'	Delaware Sd	5050'
Yates	2630'	Bone Springs	6400'
Seven Rivers	2940'	Wolfcamp	9600'
Bowers	3520'	Penn Shale	10,800'
Queen	3730'	Strawn	11,460'
Penrose	4020'	Atoka	11,830'
Grayburg	4350'	PTD	11,900'
BFSA	4800'		

3. We do not anticipate finding water but have listed the formation in which we anticipate finding oil or gas.

Strawn 11,460'

4. Proposed casing program: See Form 3160-3. HEYCO will be using some used casing when applicable.
5. Pressure control equipment: See Exhibit C.
6. Mud program: See Form 3160-3.
7. Auxiliary equipment: Blowout preventer, Annular & Flow Sensors before the Wolfcamp.
8. Testing, logging and coring programs: One possible DST in the Strawn. No coring is anticipated. The planned logs are are DLL-Micro w/GR & Caliper and CN-Den w/GR & Caliper.
9. No abnormal pressures or temperatures are anticipated.
10. Anticipated starting date: As soon as possible.



RIG BOP

10" x 1500 Series Flange

EXHIBIT "C"

Harvey E. Yates Company
 Young Deep Unit #31
 Sec. 9, T18S, R32E
 1980' FSL & 660' FFL
 Lea Co., N.M.