

Submit to Appropriate  
District Office  
State Lease - 6 copies  
Fee Lease - 5 copies

State of New Mexico  
Energy, Minerals and Natural Resources Department

Form C-101  
Revised 1-1-89

OIL CONSERVATION DIVISION

P.O. Box 2088

Santa Fe, New Mexico 87504-2088

DISTRICT I

P.O. Box 1980, Hobbs, NM 88240

DISTRICT II

P.O. Drawer DD, Artesia, NM 88210

DISTRICT III

1000 Rio Brazos Rd., Aztec, NM 87410

API NO. (assigned by OCD on New Wells)

30-025-31098

5. Indicate Type of Lease

STATE ☒ FEE ☐

6. State Oil & Gas Lease No.

B-1608

APPLICATION FOR PERMIT TO DRILL, DEEPEN, OR PLUG BACK

1a. Type of Work:

DRILL ☒ RE-ENTER ☐ DEEPEN ☐ PLUG BACK ☐

b. Type of Well:

OIL WELL ☐ GAS WELL ☐ OTHER ☐ Observation ☐ SINGLE ZONE ☒ MULTIPLE ZONE ☐

7. Lease Name or Unit Agreement Name

East Vacuum Grayburg San Andres  
Unit  
Tract 3332

2. Name of Operator

PHILLIPS PETROLEUM COMPANY

8. Well No.

003

3. Address of Operator

4001 Penbrook St., Odessa, TX 79762

9. Pool name or Wildcat

Vacuum Grayburg San Andres

4. Well Location

Surface 135'

Surface 1534'

Unit Letter B, BHL 215' Feet From The North Line and BHL 1462' Feet From The East Line

Section 33 Township 17-S Range 35-E NMPM Lea County

10. Proposed Depth

4810'

11. Formation

Grayburg San Andres

12. Rotary or C.T.

Rotary

13. Elevations (Show whether DF, RT, GR, etc.)

3331.7' Unprepared

14. Kind & Status Plug. Bond

Blanket

15. Drilling Contractor

Advise later

16. Approx. Date Work will start

upon approval

17.

PROPOSED CASING AND CEMENT PROGRAM

SIZE OF HOLE	SIZE OF CASING	WEIGHT PER FOOT	SETTING DEPTH	SACKS OF CEMENT	EST. TOP
12-1/2"	9-5/8"	36#	1600'	1000 sk C	surface
8-1/2"	5-1/2"	15.5#	4810'	1400 sk C	surface

THIS IS AN OBSERVATION WELL - NEVER TO BE PRODUCED

Use mud additives as required for control.

BOP equipment: Series 900, 3000# WP

(See attached schematic - Figure 7-9 or 7-10)

IN ABOVE SPACE DESCRIBE PROPOSED PROGRAM: IF PROPOSAL IS TO DEEPEN OR PLUG BACK, GIVE DATA ON PRESENT PRODUCTIVE ZONE AND PROPOSED NEW PRODUCTIVE ZONE. GIVE BLOWOUT PREVENTER PROGRAM, IF ANY.

I hereby certify that the information above is true and complete to the best of my knowledge and belief. Supervisor

SIGNATURE

*L. M. Sanders*

TITLE

Regulation and Proration

DATE

12/6/90

TYPE OR PRINT NAME

L. M. Sanders

TELEPHONE NO.

(This space for State Use)

Orig. Signed by  
Paul Kautz  
Geologist

APPROVED BY

TITLE

DATE

DEC 10 1990

CONDITIONS OF APPROVAL, IF ANY:

Submit to Appropriate  
District Office  
State Lease - 4 copies  
Fee Lease - 3 copies

State of New Mexico  
Energy, Minerals and Natural Resources Department

Form C-102  
Revised 1-1-89

OIL CONSERVATION DIVISION

P.O. Box 2088  
Santa Fe, New Mexico 87504-2088

DISTRICT I  
P.O. Box 1980, Hobbs, NM 88240

DISTRICT II  
P.O. Drawer DD, Artesia, NM 88210

DISTRICT III  
1000 Rio Bonito Rd., Aztec, NM 87410

WELL LOCATION AND ACREAGE DEDICATION PLAT

All Distances must be from the outer boundaries of the section

Operator PHILLIPS PETROLEUM CO.			Lease EVGSAU		Well No. 3332-003
Unit Letter B	Section 33	Township 17 SOUTH	Range 35 EAST	County NMPM	LEA
Actual Footage Location of Well: BHL 215' FNL & 1462' FEL 135 feet from the NORTH line and 1534 feet from the EAST line					
Ground level Elev. 3331.7	Producing Formation Observation well		Pool Vacuum Grayburg San Andres	Dedicated Acreage: 0 Acres	

1. Outline the acreage dedicated to the subject well by colored pencil or hatchure marks on the plat below.

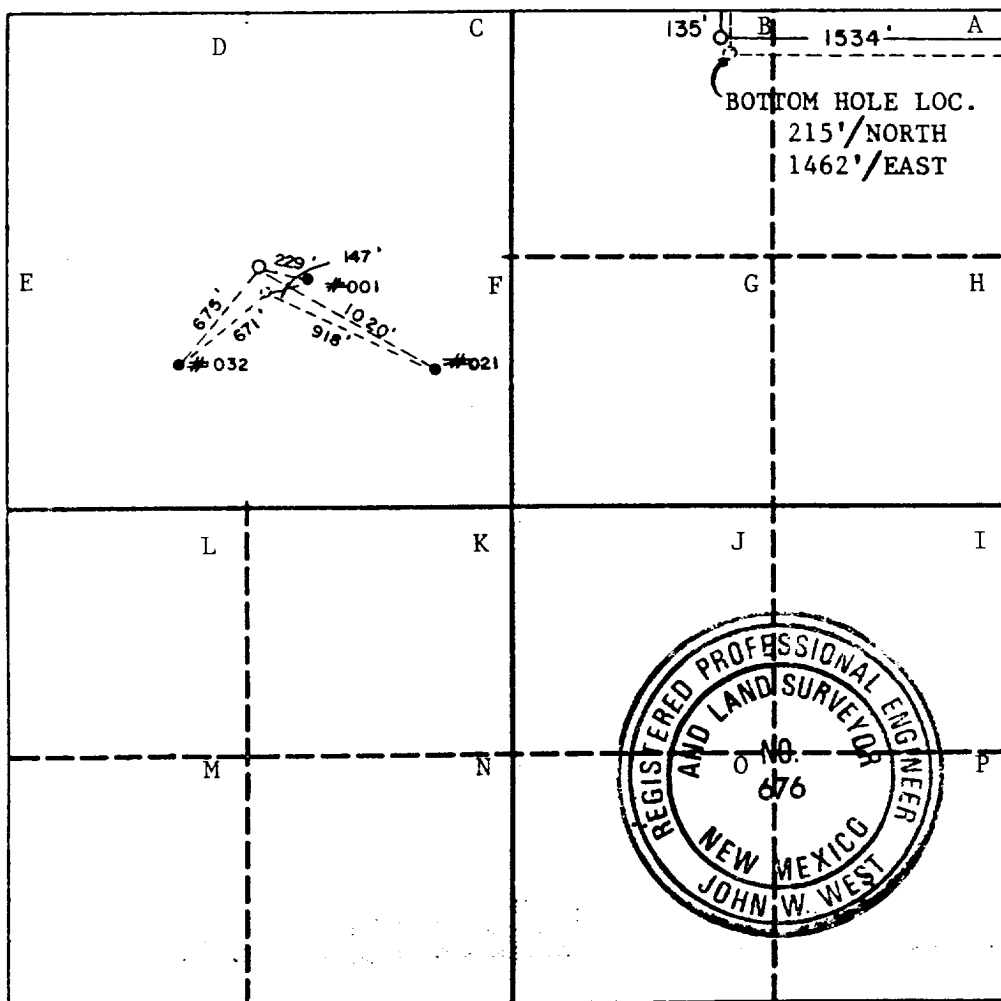
2. If more than one lease is dedicated to the well, outline each and identify the ownership thereof (both as to working interest and royalty).

3. If more than one lease of different ownership is dedicated to the well, have the interest of all owners been consolidated by communitization, unitization, force-pooling, etc.?

☐ Yes ☐ No If answer is "yes" type of consolidation \_\_\_\_\_

If answer is "no" list the owners and tract descriptions which have actually been consolidated. (Use reverse side of this form if necessary.) \_\_\_\_\_

No allowable will be assigned to the well until all interests have been consolidated (by communitization, unitization, forced-pooling, or otherwise) or until a non-standard unit, eliminating such interest, has been approved by the Division.



OPERATOR CERTIFICATION

I hereby certify that the information contained herein is true and complete to the best of my knowledge and belief.

Signature

Printed Name

L. M. Sanders

Position Supervisor,  
Regulation & Proration

Company

PHILLIPS PETROLEUM COMPANY

Date

12/6/90

SURVEYOR CERTIFICATION

I hereby certify that the well location shown on this plat was plotted from field notes of actual surveys made by me or under my supervision, and that the same is true and correct to the best of my knowledge and belief.

Date Surveyed

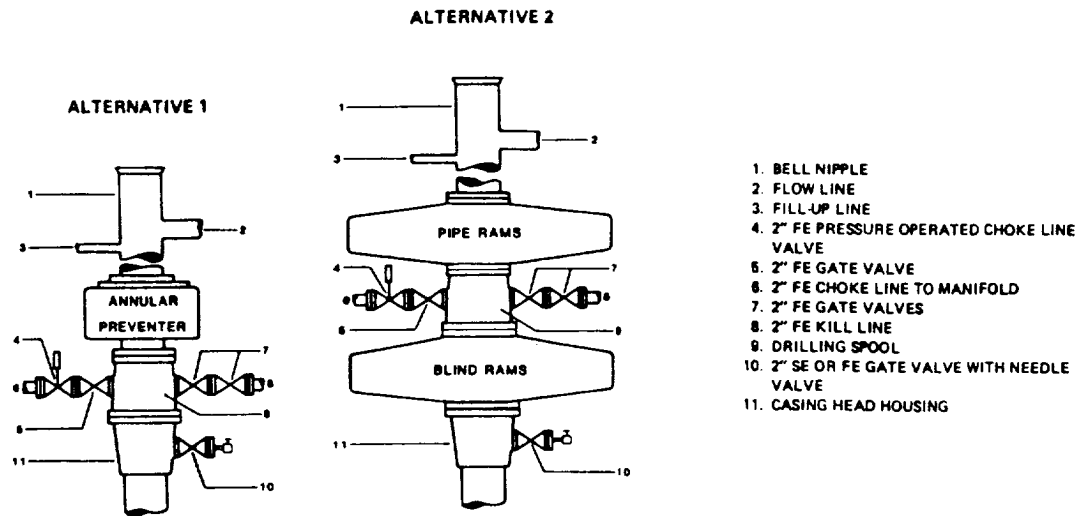
11-23-90

Signature & Seal of  
Professional Surveyor

Certificate No. JOHN W. WEST, 676

RONALD J. EIDSON, 3239

## FIELD PRACTICES AND STANDARDS



NOTE: THE DRILLING SPOOL MAY BE LOCATED BELOW BOTH SETS OF RAMS IF A DOUBLE PREVENTER IS USED AND IT DOES NOT HAVE SUITABLE OUTLETS BETWEEN RAMS

Figure 7-9. Standard Hydraulic Blowout Preventer Assembly  
(2 M or 3 M Working Pressure) Alternative 1

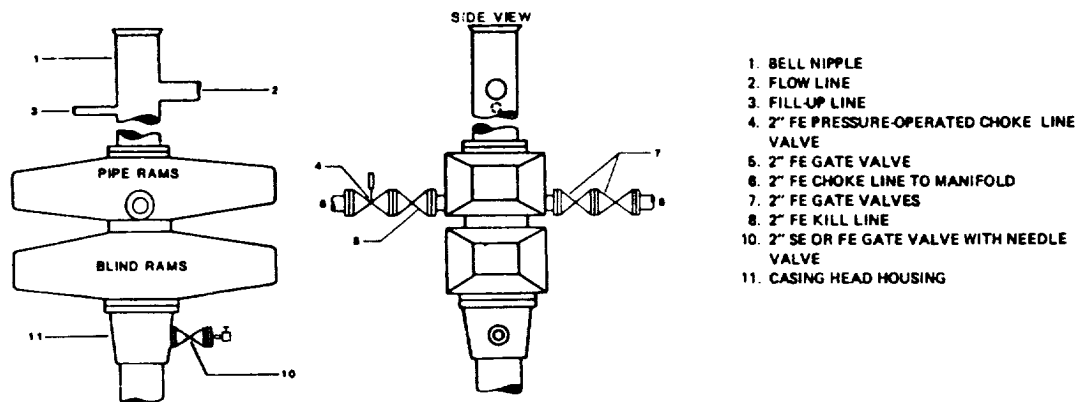


Figure 7-10. Standard Hydraulic Blowout Preventer Assembly  
(2 M or 3 M Working Pressure) Alternative 3 (without Drilling Spool)

ELF

10/28/91

DEC 1

DEC 1