



STATE OF NEW MEXICO
ENERGY, MINERALS AND NATURAL RESOURCES DEPARTMENT

OIL CONSERVATION DIVISION
HOBBS DISTRICT OFFICE

3-20-91

BRUCE KING
GOVERNOR

POST OFFICE BOX 1980
HOBBS, NEW MEXICO 88241-1980
(505) 393-6161

OIL CONSERVATION DIVISION
P. O. BOX 2088
SANTA FE, NEW MEXICO 87501

782-3006

RE: Proposed:

MC _____
DHC _____
NSL X _____
NSP _____
SWD _____
WFX _____
PMX _____

Gentlemen:

I have examined the application for the:

Texaco Producing Inc. Central Vacuum Unit # 275-L 31-17-35
Operator Lease & Well No. Unit S-T-R

and my recommendations are as follows:

OK

Yours very truly,

Jerry Sexton
Jerry Sexton
Supervisor, District 1

/ed



Texaco USA
Producing Department
Midland Division

PO Box 3109
Midland TX 79702-3109

March 19, 1991

GOV - STATE AND LOCAL GOVERNMENTS

Unorthodox Locations
Central Vacuum Unit
Well No. 275
Lea County, New Mexico

State of New Mexico
Energy and Minerals Department
Oil Conservation Division
P. O. Box 2088
Santa Fe, New Mexico 87501-2088

Attention: Mr. Michael E. Stogner

Gentlemen:

An Exception to Rule 104 F.I. by administrative approval is requested for Texaco Producing Inc.'s Central Vacuum Unit Well No. 275. This well is located 1980' FSL & 1231' FWL, Unit Letter "L", of Section 31, T-17-S, R-35-E.

This well must be drilled in this location to ensure proper development of 10-acre spacing. Wells drilled previously on 10-acre spacing have proven to be viable wells. It will be completed in the Grayburg San Andres formation.

There are no "affected offset operators" to this location. Attached is Form C-102 and a lease plat showing the location of the subject well.

Yours very truly,

C. P. Basham / cwh

C. P. Basham
Drilling Superintendent
on Behalf of Texaco Producing Inc.

CWH:cwh

Attachment

cc: NMOCD, P. O. Box 1980, Hobbs, NM 88240

Submit to Appropriate
District Office
State Lease - 4 copies
Fee Lease - 3 copies

State of New Mexico
Energy, Minerals and Natural Resources Department

Form C-102
Revised 1-1-89

OIL CONSERVATION DIVISION

P.O. Box 2088

Santa Fe, New Mexico 87504-2088

DISTRICT I

P.O. Box 1980, Hobbs, NM 88240

DISTRICT II

P.O. Drawer DD, Artesia, NM 88210

DISTRICT III

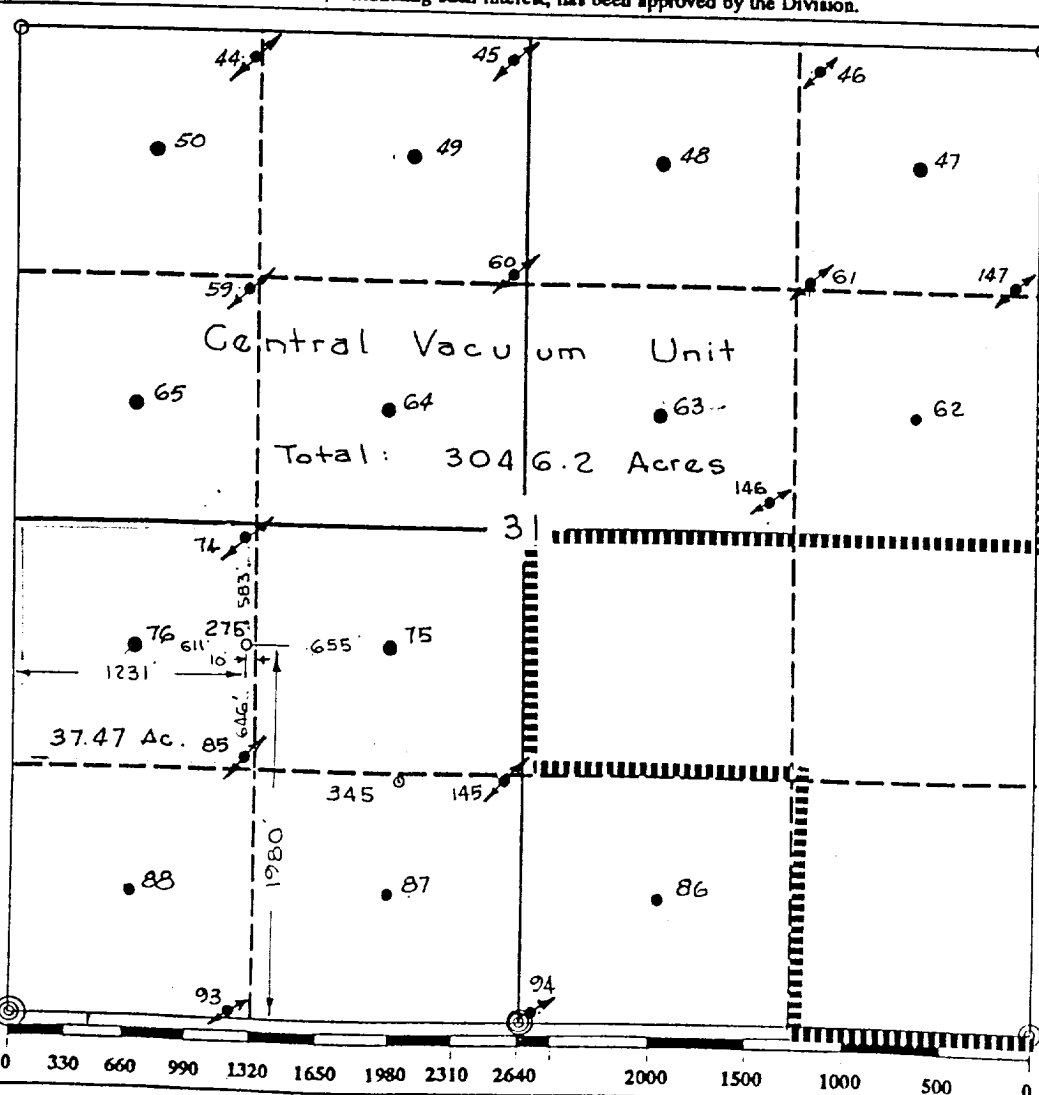
1000 Rio Brazos Rd., Aztec, NM 87410

WELL LOCATION AND ACREAGE DEDICATION PLAT

All Distances must be from the outer boundaries of the section

Operator TEXACO PRODUCING INC.			Lease Central Vacuum Unit		Well No. 275
Unit Letter L	Section 31	Township 17-South	Range 35-East	County Lea	
Actual Footage Location of Well: 1980 feet from the South line and 1231 feet from the West line					
Ground level Elev. 3989		Producing Formation Grayburg; San Andres		Pool Vacuum Grayburg-San Andres	
Dedicated Acreage: 37.47 Acres					

1. Outline the acreage dedicated to the subject well by colored pencil or hatchure marks on the plat below.
2. If more than one lease is dedicated to the well, outline each and identify the ownership thereof (both as to working interest and royalty).
3. If more than one lease of different ownership is dedicated to the well, have the interest of all owners been consolidated by communitization, unitization, force-pooling, etc.?
☒ Yes ☐ No If answer is "yes" type of consolidation Unitization
If answer is "no" list the owners and tract descriptions which have actually been consolidated. (Use reverse side of this form if necessary.)
No allowable will be assigned to the well until all interests have been consolidated (by communitization, unitization, forced-pooling, or otherwise) or until a non-standard unit, eliminating such interest, has been approved by the Division.



OPERATOR CERTIFICATION

I hereby certify that the information contained herein is true and complete to the best of my knowledge and belief.

Signature
Royce D. Mariott
Printed Name
Royce D. Mariott
Position
Division Surveyor
Company
Texaco Producing Inc.
Date
March 11, 1991

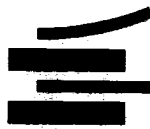
SURVEYOR CERTIFICATION

I hereby certify that the well location shown on this plat was plotted from field notes of actual surveys made by me or under my supervision, and that the same is true and correct to the best of my knowledge and belief.

Date Surveyed
March 6, 1991
Signature & Seal of
Professional Surveyor
John S. Piper
Certificate No.
7254 John S. Piper



LTR



Job separation sheet

Submit to Appropriate
District Office
State Lease - 6 copies
Fee Lease - 5 copies

State of New Mexico
Energy, Minerals and Natural Resources Department

Form C-101
Revised 1-1-89

OIL CONSERVATION DIVISION

DISTRICT I
P.O. Box 1980, Hobbs, NM 88240

DISTRICT II
P.O. Drawer DD, Artesia, NM 88210

DISTRICT III
1000 Rio Brazos Rd., Aztec, NM 87410

P.O. Box 2088
Santa Fe, New Mexico 87504-2088

API NO. (assigned by OCD on New Wells)

30-025-31196

5. Indicate Type of Lease

STATE ☒

FEE ☐

6. State Oil & Gas Lease No.

B-1606

APPLICATION FOR PERMIT TO DRILL, DEEPEN, OR PLUG BACK

1a. Type of Work:

DRILL ☒

RE-ENTER ☐

DEEPEN ☐

PLUG BACK ☐

b. Type of Well:

OIL
WELL ☒

GAS
WELL ☐

OTHER ☐

SINGLE
ZONE ☒

MULTIPLE
ZONE ☐

7. Lease Name or Unit Agreement Name

CENTRAL VACUUM UNIT

2. Name of Operator

TEXACO PRODUCING INC.

8. Well No.

275

3. Address of Operator

P. O. Box 3109, Midland, Texas 79702

9. Pool name or Wildcat

VACUUM GRAYBURG SAN ANDRES

4. Well Location

Unit Letter L : 1980 Feet From The SOUTH Line and 1231 Feet From The WEST Line

Section 31 Township 17-SOUTH Range 35-EAST NMPM LEA County

10. Proposed Depth

4840'

11. Formation

GRAYBURG-S.A.

12. Rotary or C.T.

R

13. Elevations (Show whether DF, RT, GR, etc.)

GR-3989'

14. Kind & Status Plug. Bond

BLANKET

15. Drilling Contractor

16. Approx. Date Work will start

05-01-91

17.

PROPOSED CASING AND CEMENT PROGRAM

SIZE OF HOLE	SIZE OF CASING	WEIGHT PER FOOT	SETTING DEPTH	SACKS OF CEMENT	EST. TOP
22 1/2	18 5/8	87.5#	40'	REDI-MIX	SURFACE
17 1/2	13 3/8	48# & 54.5#	1550'	2000	SURFACE
*12 1/4	*9 5/8	36#	2800'	1400	SURFACE
8 3/4	7	26#	4840'	*750, 1900	SURFACE

*9 5/8 OPTIONAL - WILL BE SET IF A WATER FLOW IS ENCOUNTERED.

CEMENTING PROGRAM ATTACHED.

THERE ARE NO OTHER OPERATORS IN THIS QUARTER/QUARTER SECTION.

UNORTHODOX LOCATION - 10 ACRE SPACING.

IN ABOVE SPACE DESCRIBE PROPOSED PROGRAM: IF PROPOSAL IS TO DEEPEN OR PLUG BACK, GIVE DATA ON PRESENT PRODUCTIVE ZONE AND PROPOSED NEW PRODUCTIVE ZONE. GIVE BLOWOUT PREVENTER PROGRAM, IF ANY.

I hereby certify that the information above is true and complete to the best of my knowledge and belief.

SIGNATURE C. Wade Howard TITLE ENGINEERING ASSISTANT DATE 03-29-91

TYPE OR PRINT NAME C. WADE HOWARD

TELEPHONE NO. 915-688-4606

(This space for State Use)

APPROVED BY _____ TITLE _____ DATE APR 30 1991

CONDITIONS OF APPROVAL, IF ANY:

NLL-3006

Permit Expires 6 Months From Approval
Date Unless Drilling Underway.

Submit to Appropriate
District Office
State Lease - 4 copies
Fee Lease - 3 copies

State of New Mexico
Energy, Minerals and Natural Resources Department

Form C-102
Revised 1-1-89

OIL CONSERVATION DIVISION

P.O. Box 2088

Santa Fe, New Mexico 87504-2088

DISTRICT I
P.O. Box 1980, Hobbs, NM 88240

DISTRICT II
P.O. Drawer DD, Artesia, NM 88210

DISTRICT III
1000 Rio Brazos Rd., Aztec, NM 87410

WELL LOCATION AND ACREAGE DEDICATION PLAT

All Distances must be from the outer boundaries of the section

Operator TEXACO PRODUCING INC.			Lease Central Vacuum Unit		Well No. 275
Unit Letter L	Section 31	Township 17-South	Range 35-East	County Lea	
Actual Footage Location of Well: 1980 feet from the South line and 1231 feet from the West line					
Ground level Elev. 3989		Producing Formation Grayburg; San Andres		Pool Vacuum Grayburg-San Andres	
					Dedicated Acreage: 37.47 Acres

1. Outline the acreage dedicated to the subject well by colored pencil or hatchure marks on the plat below.

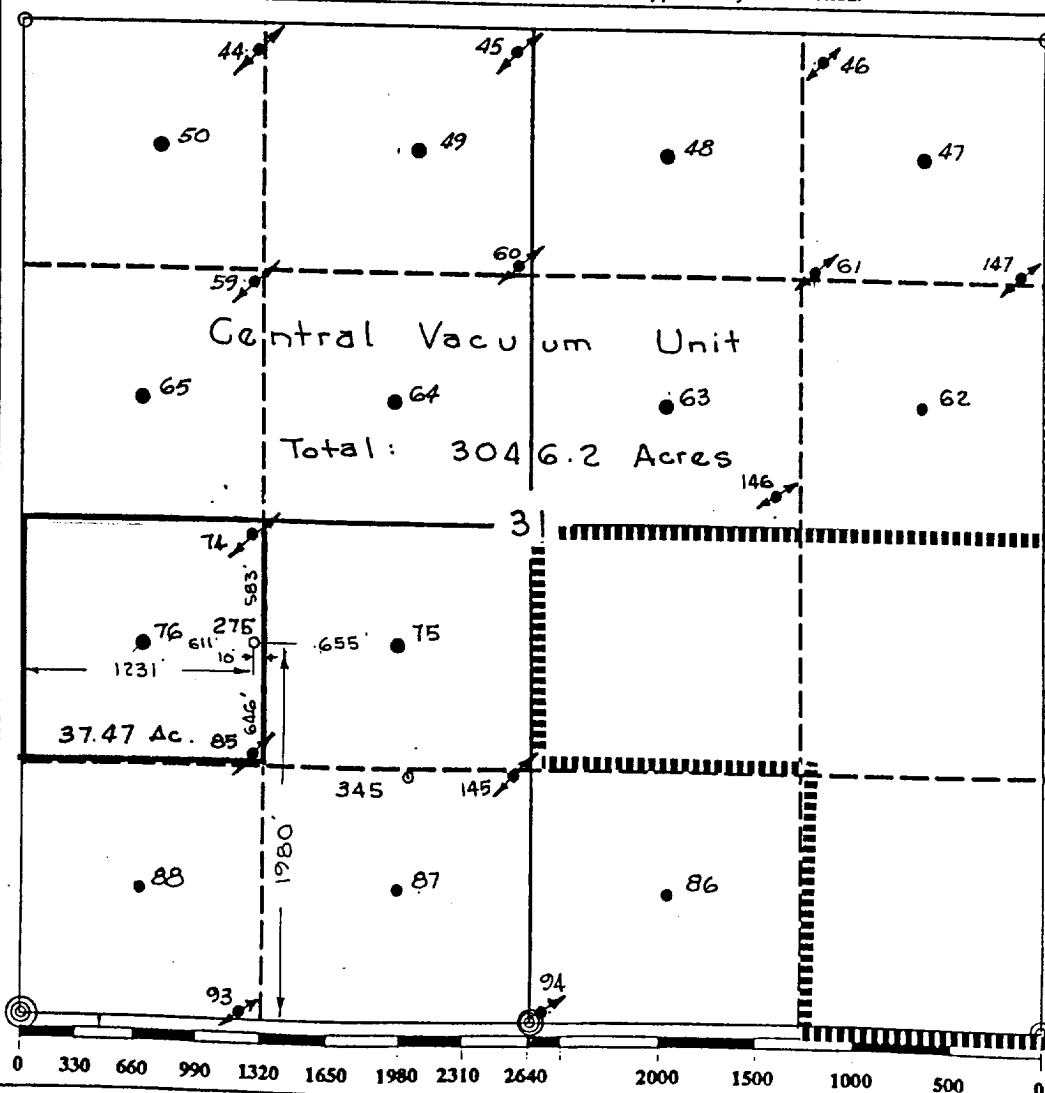
2. If more than one lease is dedicated to the well, outline each and identify the ownership thereof (both as to working interest and royalty).

3. If more than one lease of different ownership is dedicated to the well, have the interest of all owners been consolidated by communitization, unitization, force-pooling, etc.?

☒ Yes ☐ No If answer is "yes" type of consolidation Unitization

If answer is "no" list the owners and tract descriptions which have actually been consolidated. (Use reverse side of this form if necessary.)

No allowable will be assigned to the well until all interests have been consolidated (by communitization, unitization, forced-pooling, or otherwise) or until a non-standard unit, eliminating such interest, has been approved by the Division.



OPERATOR CERTIFICATION

I hereby certify that the information contained herein is true and complete to the best of my knowledge and belief.

Signature

Printed Name

Royce D. Mariott

Position

Division Surveyor

Company

Texaco Producing Inc.

Date

March 11, 1991

SURVEYOR CERTIFICATION

I hereby certify that the well location shown on this plat was plotted from field notes of actual surveys made by me or under my supervision, and that the same is true and correct to the best of my knowledge and belief.

Date Surveyed

March 6, 1991

Signature & Seal of
Professional Surveyor

John S. Piper

Certificate No.

254 John S. Piper

CENTRAL VACUUM UNIT

CEMENTING PROGRAM

CONDUCTOR CASING: REDIMIX

SURFACE CASING: 1700 SACKS CLASS H WITH 2% GEL & 2% Cacl₂ (14.8ppg, 1.28f₃/s, 6.5 gw/s). F/B 300 SACKS CLASS H WITH 2% Cacl₂ (15.6ppg, 1.19f₃/s, 5.2gw/s).

INTERMEDIATE CASING: 450 SACKS 50/50 POZ CLASS H WITH 2% GEL, 5% SALT (14.25ppg, 1.28 f₃/s, 5.75gw/s). F/B 250 SACKS CLASS H WITH 2% Cacl₂ (15.6ppg, 1.19f₃/s, 5.2gw/s).

DV TOOL AT 1600': 700 SACKS CLASS H WITH 2% Cacl₂ (15.6ppg, 1.19 f₃/s, 5.2 gw/s).

PRODUCTION CASING

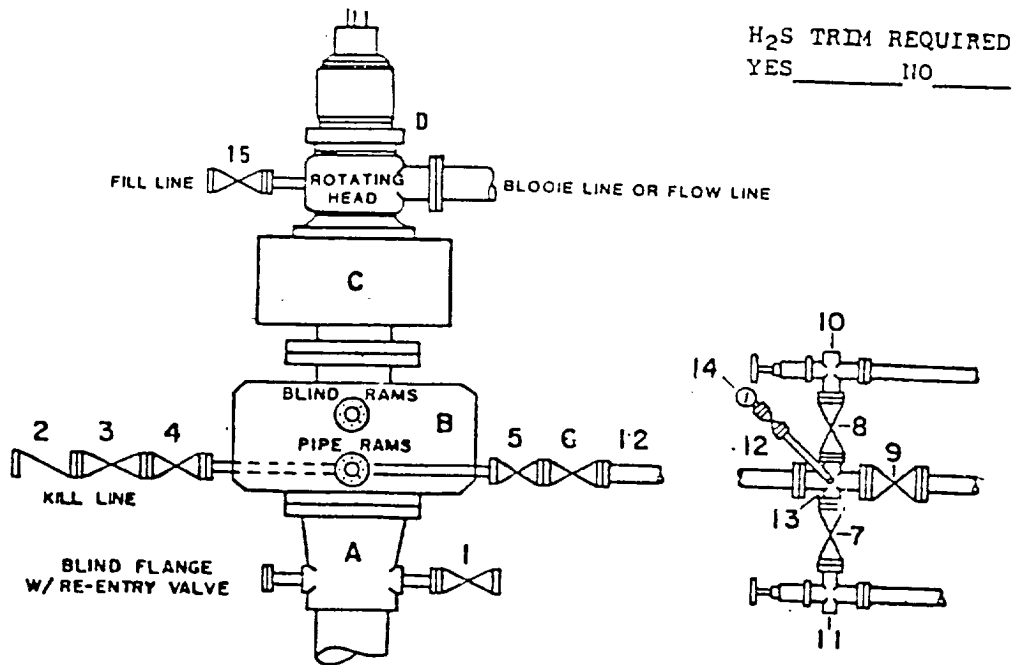
WITH INTERMEDIATE: 500 SACKS 35/65 POZ CLASS H WITH 6% GEL, 5% SALT, 1/4# FLOCELE (12.8ppg, 1.87 f₃/s, 9.9 gw/s). F/B 250 SACKS CLASS H WITH 1/4# FLOCELE (15.6ppg, 1.18f₃/s, 5.2 gw/s).

PRODUCTION CASING

WITHOUT INTERMEDIATE: 1650 SACKS 35/65 POZ CLASS H WITH 6% GEL, 5% SALT, 1/4# FLOCELE (12.8ppg, 1.87 f₃/s, 9.9 gw/s). F/B 250 SACKS CLASS H (15.6ppg, 1.18 f₃/s, 5.2 gw/s).

AN ECP WILL BE SET @ 1600' IF A WATERFLOW IS ENCOUNTERED.

DRILLING CONTROL **CONDITION III-B 3000 PSI WP**



H₂S TRIM REQUIRED
 YES _____ NO _____

DRILLING CONTROL

MATERIAL LIST - CONDITION III - B

- | | |
|------------|---|
| A | Texaco Wellhead |
| B | 3000# W.P. Dual ram type preventer, hydraulic operated with 1" steel, 3000# W.P. control lines (where sub-structure height is adequate, 2 - 3000# W.P. single ram preventers may be utilized with 3000# W.P. drilling spool with 2" minimum flanged outlet for kill line and 3" minimum flanged outlet for choke line. The drilling spool is to be installed below the single ram type preventers). |
| C | 3000# W.P. Annular Preventer with 1" steel, 3000# W.P. control lines. |
| D | Rotating Head with fill up outlet and extended Bleeie line. |
| 1,3,4,7,8, | 2" minimum 3000# W.P. flanged full opening steel gate valve, or Halliburton Lo Torc Plug valve. |
| 2 | 2" minimum 3000# W.P. back pressure valve. |
| 5,6,9 | 3" minimum 3000# W.P. flanged full opening steel gate valve, or Halliburton Lo Torc Plug valve. |
| 12 | 3" minimum Schedule 80, Grade B, seamless line pipe. |
| 13 | 2" minimum x 3" minimum 3000# W.P. flanged cross. |
| 10,11 | 2" minimum 3000# W.P. adjustable choke bodies. |
| 14 | Cameron Mud Gauge or equivalent (location optional in Choke line). |
| 15 | 2" minimum 3000# W.P. flanged or threaded full opening steel gate valve, or Halliburton Lo Torc Plug valve. |



TEXACO, INC.
 MIDLAND DIVISION
 MIDLAND, TEXAS



SCALE	DATE	EST. NO.	CRQ. NO.
DRAWN BY			
CHECKED BY			
APPROVED BY			

EXHIBIT E