

UNITED STATES
DEPARTMENT OF THE INTERIOR
BUREAU OF LAND MANAGEMENT

30-025-31241

APPLICATION FOR PERMIT TO DRILL, DEEPEN, OR PLUG BACK

1a. TYPE OF WORK

DRILL ☒

DEEPEN ☐

PLUG BACK ☐

b. TYPE OF WELL

OIL
WELL ☐

GAS
WELL ☐

OTHER

SINGLE
ZONE ☒

MULTIPLE
ZONE ☐

2. NAME OF OPERATOR

Marathon Oil Company

3. ADDRESS OF OPERATOR

P. O. Box 552, Midland, TX 79702

4. LOCATION OF WELL (Report location clearly and in accordance with any State requirements.)
At surface

990' FNL & 1930' FWL
At proposed prod. zone

990' FNL & 1930' FWL

14. DISTANCE IN MILES AND DIRECTION FROM NEAREST TOWN OR POST OFFICE*

5-1/2 miles south of Maljamar, NM

15. DISTANCE FROM PROPOSED*
LOCATION TO NEAREST
PROPERTY OR LEASE LINE, FT.
(Also to nearest drig. unit line, if any)

330'

16. NO. OF ACRES IN LEASE

120

18. DISTANCE FROM PROPOSED*
TO NEAREST WELL, DRILLING, COMPLETED,
OR APPLIED FOR, ON THIS LEASE, FT.

* 1240'

19. PROPOSED DEPTH

11,000'

17. NO. OF ACRES ASSIGNED
TO THIS WELL

40

20. ROTARY OR CABLE TOOLS

Rotary

21. ELEVATIONS (Show whether DF, RT, GR, etc.)

3892' GR

22. APPROX. DATE WORK WILL START*

May 20, 1991

23.

PROPOSED CASING AND CEMENTING PROGRAM

SIZE OF HOLE	SIZE OF CASING	WEIGHT PER FOOT	SETTING DEPTH	QUANTITY OF CEMENT
17-1/2"	13-3/8"	48	450'	835 sx - circulate
11"	8-5/8"	24 & 32	2800'	790 sx - circulate
7-7/8"	5-1/2"	15.5 & 17	11000'	950 sx - SEE STIPS.

Propose to drill to a TD of 11,000'.

All casing will be run and cemented in accordance with regulations and by approved methods.

Blowout prevention equipment will be applied as outlined in Additional Information. See attached Multipoint Surface Use Plan and Additional Information for specific drilling operations.

* Distance to proposed Love "3" Federal #2

ALL SUBJECT TO
FEDERAL REQUIREMENTS AND
FEDERAL REGULATIONS
APPLICABLE

IN ABOVE SPACE DESCRIBE PROPOSED PROGRAM: If proposal is to deepen or plug back, give data on present productive zone and proposed new productive zone. If proposal is to drill or deepen directionally, give pertinent data on subsurface locations and measured and true vertical depths. Give blowout prevention program, if any.

24.

SIGNED

TITLE Drilling Superintendent

DATE

(This space for Federal or State office use)

PERMIT NO.

APPROVAL DATE

APPROVED BY

TITLE

DATE

CONDITIONS OF APPROVAL, IF ANY:

*See Instructions On Reverse Side

OIL CONSERVATION DIVISION

P.O. Box 2088

Santa Fe, New Mexico 87504-2088

DISTRICT I
P.O. Box 1980, Hobbs, NM 88240

DISTRICT II
P.O. Drawer DD, Artesia, NM 88210

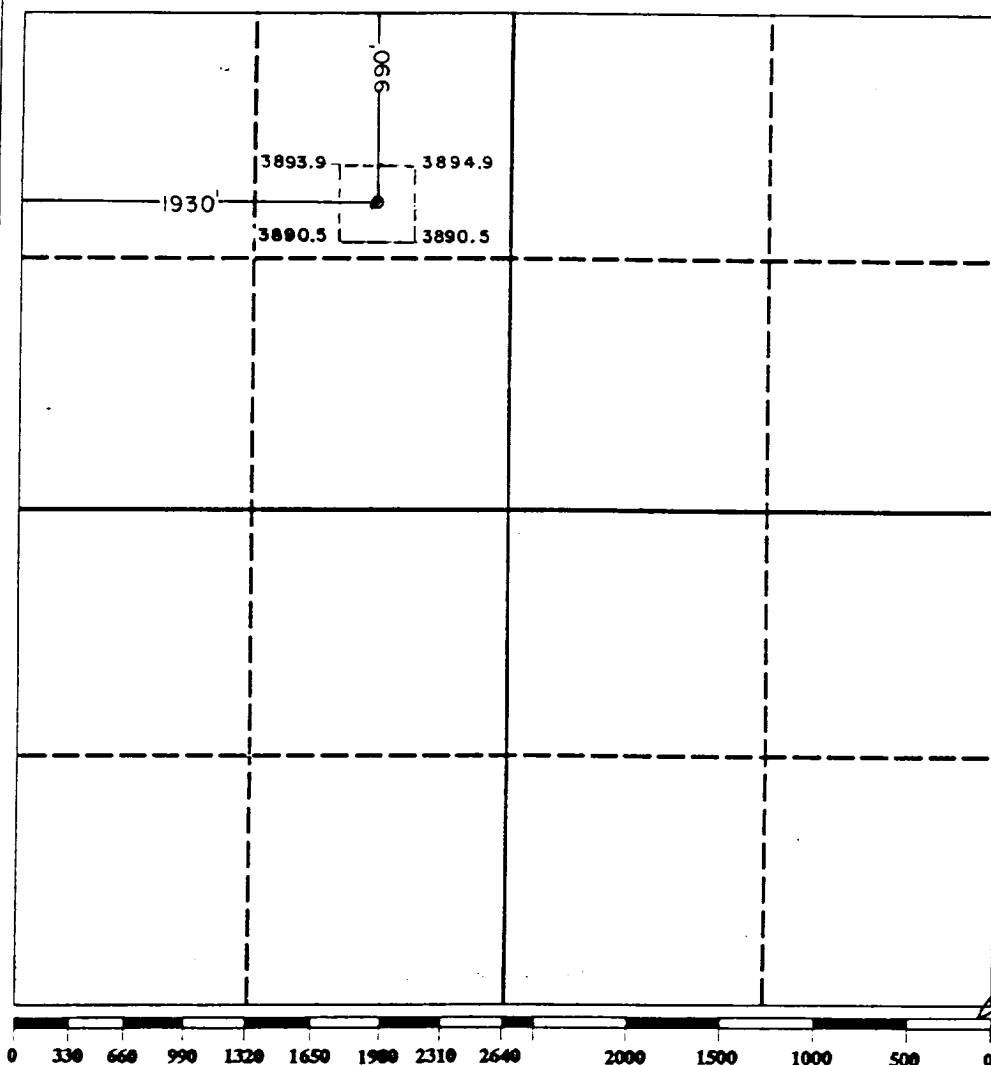
DISTRICT III
1000 Rio Brazos Rd., Aztec, NM 87410

WELL LOCATION AND ACREAGE DEDICATION PLAT

All Distances must be from the outer boundaries of the section

Operator MARATHON OIL CO.		Lease LOVE FEDERAL "3"		Well No. 3
Unit Letter C	Section 3	Township 18 SOUTH	Range 32 EAST NMPM	County LEA
Actual Footage Location of Well: 990 feet from the NORTH line and 1930 feet from the WEST line				
Ground level Elev. 3892.2	Producing Formation Bone Spring/Wolfcamp	Pool Young 200 North Young BS	Dedicated Acreage: 40 Acres	

1. Outline the acreage dedicated to the subject well by colored pencil or hatchure marks on the plat below.
2. If more than one lease is dedicated to the well, outline each and identify the ownership thereof (both as to working interest and royalty).
3. If more than one lease of different ownership is dedicated to the well, have the interest of all owners been consolidated by communitization, unitization, force-pooling, etc.?
- ☐ Yes ☐ No If answer is "yes" type of consolidation _____
- If answer is "no" list the owners and tract descriptions which have actually been consolidated. (Use reverse side of this form if necessary. _____)
- No allowable will be assigned to the well until all interests have been consolidated (by communitization, unitization, forced-pooling, or otherwise) or until a non-standard unit, eliminating such interest, has been approved by the Division.



OPERATOR CERTIFICATION

I hereby certify that the information contained herein is true and complete to the best of my knowledge and belief.

Signature

Printed Name _____

S. L. Atnipp

Position

Drilling Superintendent

Соправу

Marathon Oil Company

Date _____

SURVEYOR CERTIFICATION

I hereby certify that the well location shown on this plat was plotted from field notes of actual surveys made by me or under my supervision, and that the same is true and correct to the best of my knowledge and belief.

Date Surveyed _____

3-21-9

Signature & Seal of Professional Surveyor

Certificate No.	JOHN W. WEST,	676
	RONALD J. EIDSON,	3239

MARATHON OIL COMPANY

LOVE "3" FEDERAL #3
ADDITIONAL INFORMATION
Comply with Order 1

In conjunction with Form 9-331C, Application to drill subject well, Marathon Oil Company submits the following items of information in accordance with BLM requirements:

1. Geological Name of Surface Formation

Quaternary Alluvium

2. Estimated Tops of Important Geological Markers

Rustler	1210'	Delaware	5046'
Base of Salt	2449'	Bone Spring	5919'
Yates	2689'	1st Sand	7638'
Seven Rivers	3097'	2nd Carb	7736'
Queen	3809'	2nd Sand	8249'
Grayburg	4286'	3rd Carb	8861'
		Wolfcamp	9090'

3. Estimated Depths of Anticipated Water, Oil or Gas Bearing Formations

Yates (water)	2689'	Bone Spring	5919'
Seven Rivers (water)	3097'	1st Sand (water & oil)	7638'
Queen (water & oil)	3809'	2nd Carb (water & oil)	7736'
Grayburg (water & oil)	4286'	2nd Sand (water & oil)	8249'
Delaware (water & oil)	5046'	3rd Carb (water & oil)	8861'
		Wolfcamp (gas & oil)	9090'

4. Casing and Cementing Program

13-3/8" Surface to 450':	Cement to surface with 510 sxs Class "C" with 2% CaCl_2
8-5/8" Intermediate to 2800':	Cement to surface with 490 sxs Modified Lite followed by 300 sxs Class "C" with 2% CaCl_2
5-1/2" Production to 11,000':	Cement to 2500' with 650 sx Class "H" PozMix; tail in with 100 sx Class "H". Second stage 500 sx Class "H". Possible stage tool setting @ 7000'.

