

UNITED STATES
DEPARTMENT OF THE INTERIOR

BUREAU OF LAND MANAGEMENT

APPLICATION FOR PERMIT TO DRILL, DEEPEN, OR PLUG BACK

1A. TYPE OF WORK

DRILL ☒

DEEPEN ☐

PLUG BACK ☐

1B. TYPE OF WELL

OIL WELL ☒

GAS WELL ☐

OTHER

SINGLE ZONE ☐

MULTIPLE ZONE ☐

2. NAME OF OPERATOR

Harvey E. Yates Company

3. ADDRESS OF OPERATOR

P.O. Box 1933, Roswell, N.M. 88202

4. LOCATION OF WELL (Report location clearly and in accordance with any State requirements.)*

At surface

2310' FSL & 1980' FWL

At proposed prod. zone

same

14. DISTANCE IN MILES AND DIRECTION FROM NEAREST TOWN OR POST OFFICE*

5 miles south of Maljamar, New Mexico

10. DISTANCE FROM PROPOSED*

LOCATION TO NEAREST
PROPERTY OR LEASE LINE, FT.
(Also to nearest drlg. unit line, if any)

330'

16. NO. OF ACRES IN LEASE

160

17. NO. OF ACRES ASSIGNED
TO THIS WELL

40

18. DISTANCE FROM PROPOSED LOCATION*

TO NEAREST WELL, DRILLING, COMPLETED,
OR APPLIED FOR, ON THIS LEASE, FT.

1320'

19. PROPOSED DEPTH

9270'

20. ROTARY OR CABLE TOOLS

rotary

21. ELEVATIONS (Show whether DF, RT, GR, etc.)

3808.7 GL

22. APPROX. DATE WORK WILL START*

ASAP

23.

PROPOSED CASING AND CEMENTING PROGRAM

Caption Controlled Water Basin

SIZE OF HOLE	SIZE OF CASING	WEIGHT PER FOOT	SETTING DEPTH	QUANTITY OF CEMENT
17 1/2"	13 3/8"	54.5#	400'	Circ to surface
12 1/4"	8 5/8"	32	2725'	Circ to surface
7 7/8"	5 1/2"	17	9270'	600' above pay

MUD PROGRAM:

0 - 400 paper FRESH WATER
400 - 2725 cut brine
2725 - 9270 FW gel

APPROVAL SUBJECT TO
GENERAL REQUIREMENTS AND
SPECIAL STIPULATIONS
ATTACHED

IN ABOVE SPACE DESCRIBE PROPOSED PROGRAM: If proposal is to deepen or plug back, give data on present productive zone and proposed new productive zone. If proposal is to drill or deepen directionally, give pertinent data on subsurface locations and measured and true vertical depths. Give blowout preventer program, if any.

24.

SIGNED V. Teel V. Teel TITLE Production Analyst DATE 7/23/91

(This space for Federal or State office use)

PERMIT NO. _____ APPROVAL DATE _____

APPROVED BY 8-14-91 TITLE _____ DATE 8-14-91

CONDITIONS OF APPROVAL, IF ANY:

*See Instructions On Reverse Side

Title 18 U.S.C. Section 1001, makes it a crime for any person knowingly and willfully to make to any department or agency of the United States any false, fictitious or fraudulent statements or representations as to any matter within its jurisdiction.

Submit to Appropriate
District Office
State Lease - 4 copies
Fee Lease - 3 copies

State of New Mexico
Energy, Minerals and Natural Resources Department

JUL 22 1991

Form C-102
Revised 1-1-89

OIL CONSERVATION DIVISION

P.O. Box 2088
Santa Fe, New Mexico 87504-2088

DISTRICT I
P.O. Box 1589, Hobbs, NM 88240

DISTRICT II
P.O. Drawer DD, Artesia, NM 88210

DISTRICT III
1000 Rio Brazos Rd., Aztec, NM 87410

WELL LOCATION AND ACREAGE DEDICATION PLAT

All Distances must be from the outer boundaries of the section

Operator HARVEY E. YATES CO			Lease YOUNG DEEP UNIT		Well No. 18
Unit Letter K	Section 9	Township 18 SOUTH	Range 32 EAST	County LEA	
Actual Footage Location of Well: 1980 feet from the WEST line and 2310 feet from the SOUTH line					
Ground level Elev. 3808.7	Producing Formation Bone Springs		Pool North Young		Dedicated Acreage: 40 Acres

1. Outline the acreage dedicated to the subject well by colored pencil or hatchure marks on the plat below.

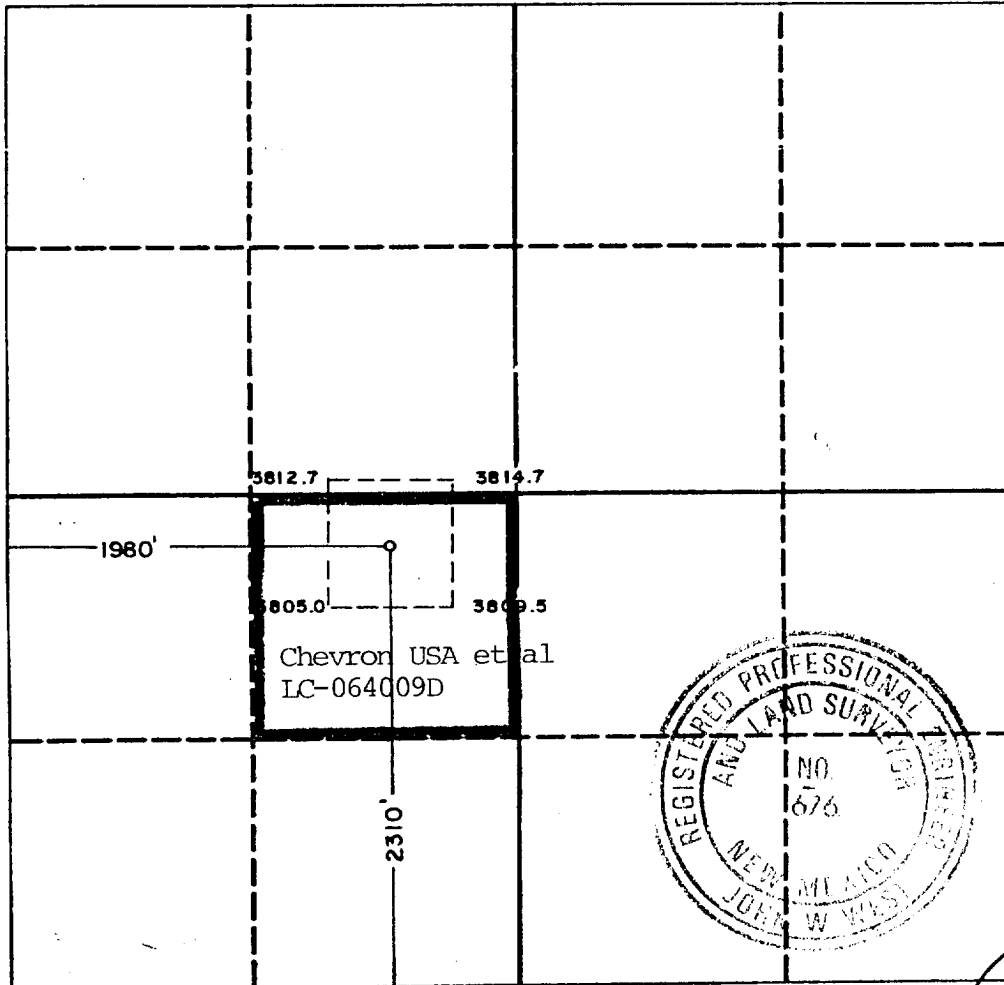
2. If more than one lease is dedicated to the well, outline each and identify the ownership thereof (both as to working interest and royalty).

3. If more than one lease of different ownership is dedicated to the well, have the interest of all owners been consolidated by communitization, unitization, force-pooling, etc.?

☐ Yes ☐ No If answer is "yes" type of consolidation _____

If answer is "no" list the owners and tract descriptions which have actually been consolidated. (Use reverse side of this form if necessary.) _____

No allowable will be assigned to the well until all interests have been consolidated (by communitization, unitization, forced-pooling, or otherwise) or until a non-standard unit, eliminating such interest, has been approved by the Division.



OPERATOR CERTIFICATION

I hereby certify that the information contained herein is true and complete to the best of my knowledge and belief.

Signature

Vickie Teel

Printed Name

Vickie Teel

Position

Production Analyst

Company

Harvey E. Yates Company

Date

7/23/91

SURVEYOR CERTIFICATION

I hereby certify that the well location shown on this plat was plotted from field notes of actual surveys made by me or under my supervision, and that the same is true and correct to the best of my knowledge and belief.

Date Surveyed

7-17-91

Signature & Seal of
Professional Surveyor

John W. West

Certificate No. **JOHN W. WEST, 676**

RONALD J. EIDSON, 3239

Application
HARVEY E. YATES COMPANY
Young Deep Unit #18
Sec. 9, T18S, R32E
Lea County, New Mexico

In conjunction with Form 3160-3, Application for Permit to Drill the Subject well in Section 9, Township 18 South, Range 32 East, Lea County, New Mexico, Harvey E. Yates Company submits the following ten items of pertinent information in accordance with Bureau of Land Management requirements:

1. The geologic surface formation is quaternary alluvium and bolson deposits and other surficial deposits.
2. The estimated tops of geologic markers are as follow:

Rustler	1120'	Grayburg	4025'
Yates	2675'	San Andres	4800'
7 Rivers	3060'	Delaware Sand	5070'
Bowers	3520'	Bone Springs	6195'
Queen	3580'	PTD	9270'
Penrose	4025'		
3. We do not anticipate finding water but have listed the formations in which we anticipate finding oil or gas.

Grayburg, Delaware, Bone Springs
4. Proposed casing program: See Form 3160-3. HEYCO will be using some used casing when applicable.
5. Pressure control equipment: See Exhibit C. Although the rig equipment is 3M rated, this well will be a 2M PSI rating.
6. Mud program: See Form 3160-3.
7. Auxiliary equipment: Blowout preventer.
8. Testing, logging and coring programs: One possible DST in the Bone Springs. No coring is anticipated. The planned logs are DLL-Micro w/GR & Caliper and CN-Den w/GR & Caliper.
9. No abnormal pressures or temperatures are anticipated.
10. Anticipated starting date: As soon as possible.

Exhibit "C"

Harvey E. Yates Company
Young Deep Unit #18
2310' FSL & 1980' FWL
Sec. 9, T18S, R32E
Lea County, N.M.

900 Series

