

Submit to Appropriate  
District Office  
State Lease - 6 copies  
For Lease - 5 copies

State of New Mexico  
Energy, Minerals and Natural Resources Department

Form C-101  
Revised 1-1-89

OIL CONSERVATION DIVISION

P.O. Box 2088  
Santa Fe, New Mexico 87504-2088

DISTRICT I  
P.O. Box 1980, Hobbs, NM 88240

DISTRICT II  
P.O. Drawer DD, Artesia, NM 88210

DISTRICT III  
1000 Rio Brazos Rd., Aztec, NM 87410

API NO. (assigned by OCD on New Wells)

30-025-31535

5. Indicate Type of Lease

STATE ☒

FEE ☐

6. State Oil & Gas Lease No.

B 2359

APPLICATION FOR PERMIT TO DRILL, DEEPEN, OR PLUG BACK

1a. Type of Work:

DRILL ☒

RE-ENTER ☐

DEEPEN ☐

PLUG BACK ☐

b. Type of Well:

OIL

WELL ☒

GAS

WELL ☐

OTHER ☐

SINGLE  
ZONE ☐

MULTIPLE  
ZONE ☐

2. Name of Operator GREENHILL PETROLEUM CORPORATION

7. Lease Name or Unit Agreement Name

Lovington Paddock Unit

8. Well No.

140

3. Address of Operator

11490 Westheimer, Suite 200, Houston, Texas 77077-6841

9. Pool name or Wildcat

Lovington Paddock

4. Well Location Unit Letter F : 2,522 Feet From The North Line and 2,630 Feet From The West Line

Section 1

Township

17S

Range

36E

NMPM

Lea

County

10. Proposed Depth

5,150 ft. 6450

11. Formation

San Andres Paddock

12. Rotary or C.T.

Rotary

13. Elevations (Show whether DF, RT, GR, etc.)

3,828.2 ft. GR

14. Kind & Status Plug. Bond

on file

15. Drilling Contractor

TBD

16. Approx. Date Work will start

04/92

17.

PROPOSED CASING AND CEMENT PROGRAM

SIZE OF HOLE	SIZE OF CASING	WEIGHT PER FOOT	SETTING DEPTH	SACKS OF CEMENT	EST. TOP
12-1/4	8-5/8	24	1,300 ft.	550	Surface
7-7/8	5-1/2	15.5	5,150 ft.	1,000	Surface

IN ABOVE SPACE DESCRIBE PROPOSED PROGRAM: IF PROPOSAL IS TO DEEPEN OR PLUG BACK, GIVE DATA ON PRESENT PRODUCTIVE ZONE AND PROPOSED NEW PRODUCTIVE ZONE. GIVE BLOWOUT PREVENTER PROGRAM, IF ANY.

I hereby certify that the information above is true and complete to the best of my knowledge and belief.

SIGNATURE

*Michael J. Newport*

TITLE

Land Manager --  
Permian Basin

DATE 03/23/92

TYPE OR PRINT NAME

Michael J. Newport

713  
TELEPHONE NO. 589-8484

(This space for State Use)

ORIGINAL SIGNED BY JERRY SEXTON

DISTRICT I SUPERVISOR

APPROVED BY

TITLE

DATE

CONDITIONS OF APPROVAL, IF ANY:

Approved for drilling only--well cannot be  
produced until NSL is approved.

Permit Expires 6 Months From Approval  
Date Unless Drilling Underway.

# OIL CONSERVATION DIVISION

P.O. Box 2088

Santa Fe, New Mexico 87504-2088

## DISTRICT I

P.O. Box 1980, Hobbs, NM 88240

## DISTRICT II

P.O. Drawer DD, Artesia, NM 88210

## DISTRICT III

1000 Rio Brazos Rd., Aztec, NM 87410

# WELL LOCATION AND ACREAGE DEDICATION PLAT

All Distances must be from the outer boundaries of the section

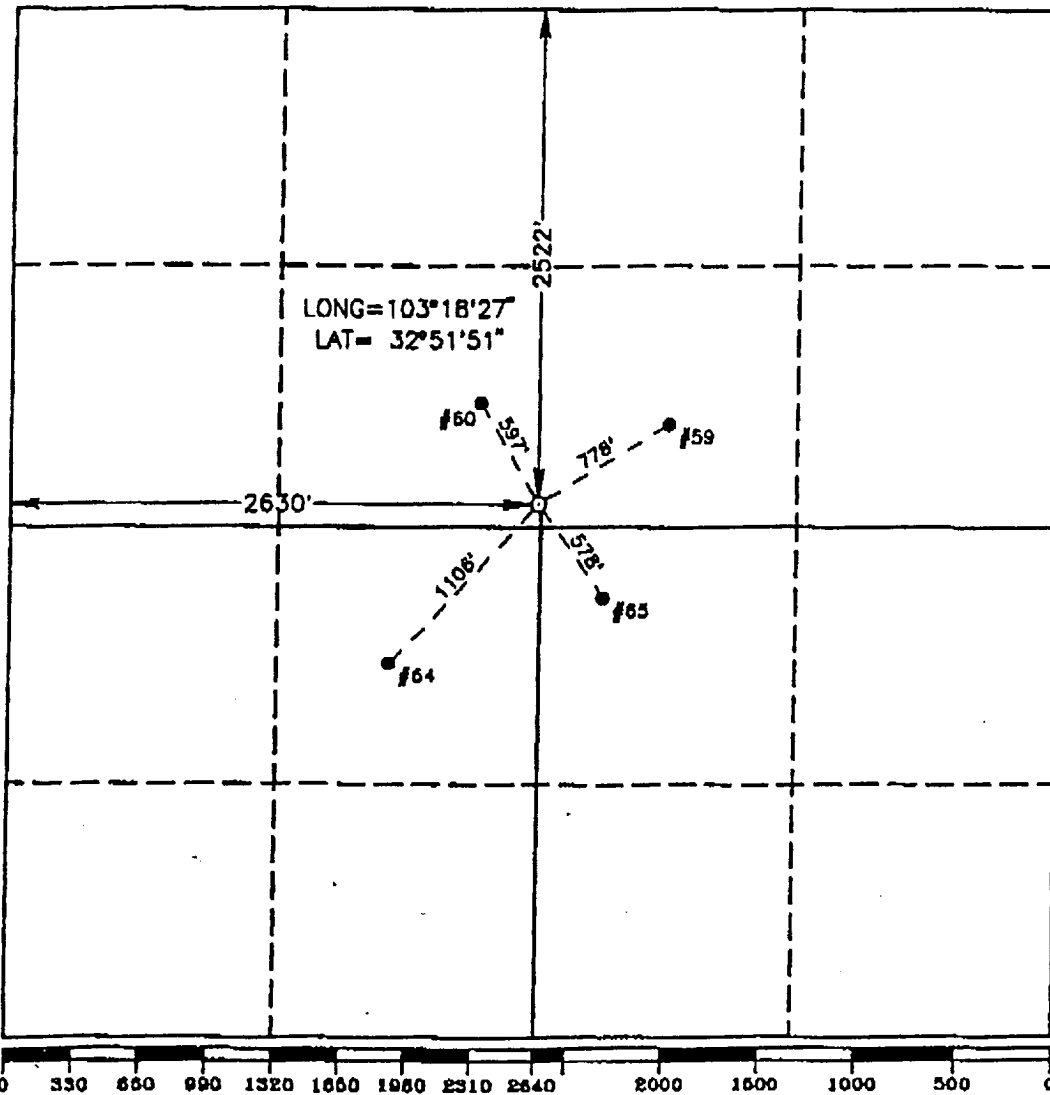
Operator <b>GREENHILL PETROLEUM CORP.</b>			Lease <b>LOVINGTON PADDOCK UNIT</b>		Well No. <b>140</b>
Unit Letter <b>F</b>	Section <b>1</b>	Township <b>17 SOUTH</b>	Range <b>36 EAST</b>	County <b>NMPN LEA</b>	
Actual Footage Location of Well: <b>2522</b> feet from the <b>NORTH</b> line and <b>2630</b> feet from the <b>WEST</b> line					
Ground Level Elev. <b>3828.2'</b>	Producing Formation <b>Paddock</b>	Pool <b>Lovington Paddock</b>	Dedicated Acreage: <b>40</b> Acres		

1. Outline the acreage dedicated to the subject well by colored pencil or hatchure marks on the plat below.
2. If more than one lease is dedicated to the well, outline each and identify the ownership thereof (both as to working interest and royalty).
3. If more than one lease of different ownership is dedicated to the well, have the interest of all owners been consolidated by communitization, unitization, force-pooling, etc.?

☐ Yes ☐ No If answer is "yes" type of consolidation \_\_\_\_\_

If answer is "no" list of owners and tract descriptions which have actually been consolidated. (Use reverse side of this form necessary.)

No allowable will be assigned to the well unit all interests have been consolidated (by communitization, unitization, forced-pooling, otherwise) or until a non-standard unit, eliminating such interest, has been approved by the Division.



## OPERATOR CERTIFICATION

I hereby certify the the information contained herein is true and complete to the best of my knowledge and belief.

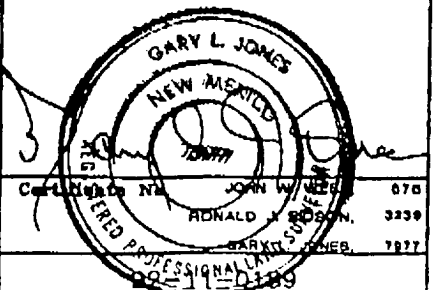
Signature  
*Michael J. Newport*  
 Printed Name  
**Michael J. Newport**  
 Position  
**Landman**  
 Company  
**Greenhill Petroleum Corp.**  
 Date  
**3-23-92**

## SURVEYOR CERTIFICATION

I hereby certify that the well location shown on this plat was plotted from field notes of actual surveys made by me or under my supervision, and that the same is true and correct to the best of my knowledge and belief.

Date Surveyed  
**MARCH 4, 1992**

Signature & Seal of Professional Surveyor



GREENHILL PETROLEUM CORPORATION  
BOP PROGRAM FOR  
LOVINGTON PADDOCK UNIT #140

Casing Program				BOP Program	
Size	Depth	Wt.	Grade	Configuration	Test Pressure
8 5/8"	1300'	24	H40, STC	RA*	200 psi
5 1/2"	6450'	15.5	K55, STC	RR*	250/1500 psi

\*RR-Ram Ram

RA-Ram Annular

Diverter-Hydrill may be substituted for a diverter.

sjs:s  
92.215