

## DISTRICT II

P.O. Box Drawer DD, Artesia, NM 88211-0719

## DISTRICT III

1000 Rio Brazos Rd., Aztec, NM 87410

## DISTRICT IV

P.O. Box 2088, Santa Fe, NM 87504-2088

## OIL CONSERVATION DIVISION

P.O. Box 2088

Santa Fe, New Mexico 87504-2088

Revised February 10, 1994

Instructions on back of form  
Submit to Appropriate District Office

State Lease - 4 Copies

Fee Lease - 3 Copies

☒ AMENDED REPORT

## WELL LOCATION AND ACREAGE DEDICATION PLAT

<sup>1</sup> API Number 30-025-31707	<sup>2</sup> Pool Code 62160	<sup>3</sup> Pool Name VACUUM GLORIETA
<sup>4</sup> Property Code	<sup>5</sup> Property Name VACUUM GLORIETA WEST UNIT	<sup>6</sup> Well No. 78
<sup>7</sup> OGRID Number 022351	<sup>8</sup> Operator Name TEXACO EXPLORATION & PRODUCTION INC.	<sup>9</sup> Elevation 4005'

<sup>10</sup> Surface Location

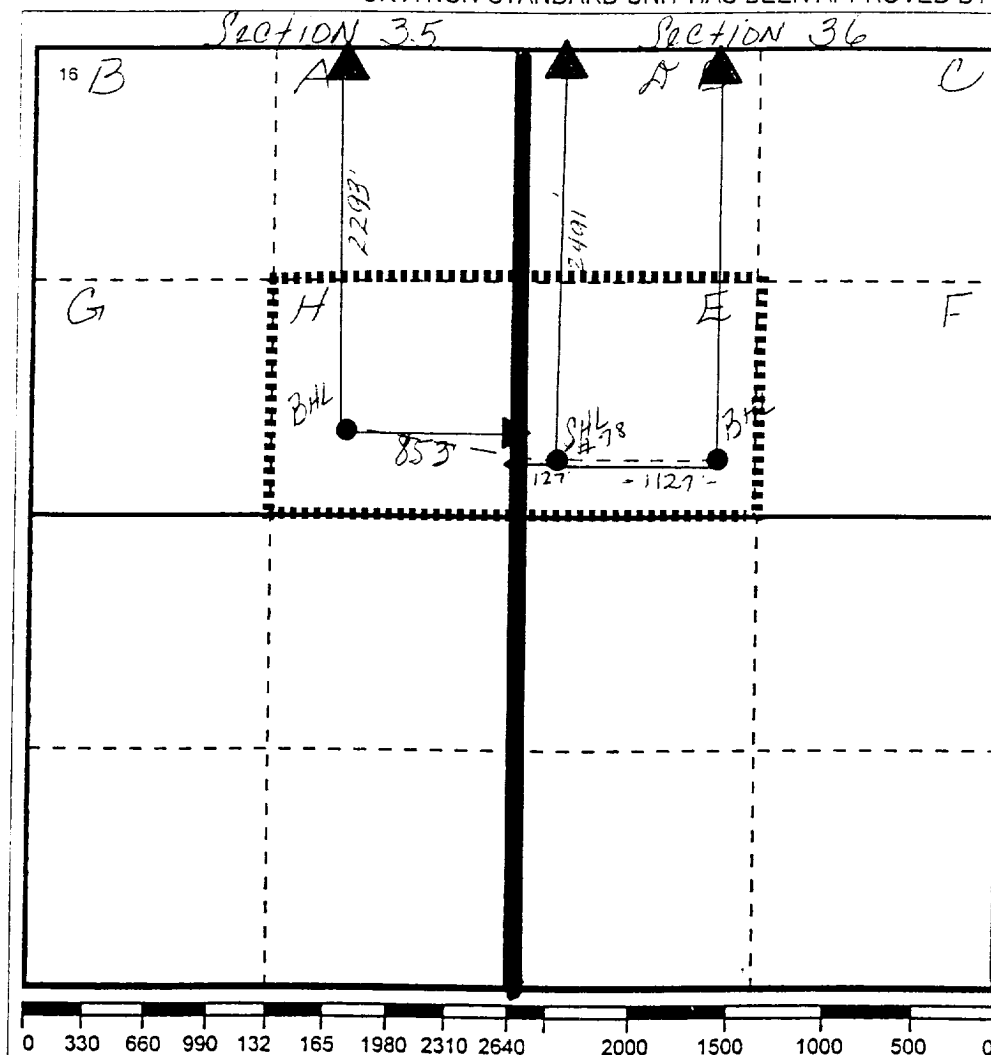
UL or lot no	Section	Township	Range	Lot Idn	Feet From The	North/South Line	Feet From The	East/West Line	County
E	36	17S	34E		2491	North	127	West	Lea

<sup>11</sup> Bottom Hole Location If Different From Surface

UL or lot no	Section	Township	Range	Lot Idn	Feet From The	North/South Line	Feet From The	East/West Line	County
E/H	36/35	17S	34E		2491/2293	N/N	1127/853	W/E	LEA

<sup>12</sup> Dedicated Acre 80	<sup>13</sup> Joint or Infill No	<sup>14</sup> Consolidation Code	<sup>15</sup> Order No.
------------------------------------	-------------------------------------	----------------------------------	-------------------------

NO ALLOWABLE WILL BE ASSIGNED TO THIS COMPLETION UNTIL ALL INTERESTS HAVE BEEN CONSOLIDATED  
OR A NON-STANDARD UNIT HAS BEEN APPROVED BY THE DIVISION



## 17 OPERATOR CERTIFICATION

I hereby certify that the information  
contained herein is true and complete to the  
best of my knowledge and belief

Signature

J. Denise Leake

Printed Name

J. Denise Leake

Position

Engineering Assistant

Date

1/16/02

## 18 SURVEYOR CERTIFICATION

I hereby certify that the well location shown  
on this plat was plotted from field notes of  
actual surveys made by me or under my  
supervision, and that the same is true and  
correct to the best of my knowledge and  
belief.

Date Surveyed

Signature &amp; Seal of

Professional Surveyor

Certificate No.