

Submit to Appropriate
District Office
State Lease - 6 copies
Fee Lease - 5 copies

State of New Mexico
Energy, Minerals and Natural Resources Department

Form C-101
Revised 1-1-89

OIL CONSERVATION DIVISION

P.O. Box 2088
Santa Fe, New Mexico 87504-2088

DISTRICT I
P.O. Box 1980, Hobbs, NM 88240

DISTRICT II
P.O. Drawer DD, Artesia, NM 88210

DISTRICT III
1000 Rio Brazos Rd., Aztec, NM 87410

API NO. (assigned by OCD on New Wells)

30-025 31707

5. Indicate Type of Lease

STATE ☒ FEE ☐

6. State Oil & Gas Lease No.

B-155

APPLICATION FOR PERMIT TO DRILL, DEEPEN, OR PLUG BACK

1a. Type of Work:

DRILL ☒ RE-ENTER ☐ DEEPEN ☐ PLUG BACK ☐

b. Type of Well:

OIL WELL ☐ GAS WELL ☐ OTHER WATER INJECTION ☐ SINGLE ZONE ☒ MULTIPLE ZONE ☐

2. Name of Operator

TEXACO EXPLORATION AND PRODUCTION INC.

3. Address of Operator

P. O. Box 3109, Midland, Texas 79702

7. Lease Name or Unit Agreement Name

VACUUM GLORIETA WEST UNIT

8. Well No.

78

9. Pool name or Wildcat

VACUUM GLORIETA

4. Well Location

Unit Letter E : 2491 Feet From The NORTH Line and 127 Feet From The WEST Line

Section 36 Township 17-SOUTH Range 34-EAST NMPM LEA County

10. Proposed Depth

6300'

11. Formation

GLORIETA/PADDOCK

12. Rotary or C.T.

ROTARY

13. Elevations (Show whether DF, RT, GR, etc.)

GR-4005'

14. Kind & Status Plug. Bond

BLANKET

15. Drilling Contractor

TO BE SELECTED

16. Approx. Date Work will start

SEPTEMBER 15, 1992

17.

PROPOSED CASING AND CEMENT PROGRAM

| SIZE OF HOLE | SIZE OF CASING | WEIGHT PER FOOT | SETTING DEPTH | SACKS OF CEMENT | EST. TOP |
|--------------|----------------|-----------------|---------------|-----------------|----------|
| 17 1/2 | 13 3/8 | 48# | 40' | REDI-MIX | SURFACE |
| 11 | 8 5/8 | 24# | 1550' | 500 | SURFACE |
| 7 7/8 | 5 1/2 | 15.5# | 6300' | 1300 | SURFACE |

CEMENTING PROGRAM: CONDUCTOR - REDIMIX.

SURFACE CASING - 300 SX CLASS C w/ 4% GEL & 2% CaCl₂ (13.5ppg, 1.74cf/s, 9.1gw/s). F/B 200 SX CLASS C w/ 2% CaCl₂ (14.8ppg, 1.34cf/s, 6.3gw/s).

PRODUCTION CASING - 1st STG: 300 SX CLASS H w/ 1/4# FLOCELE (15.6ppg, 1.18cf/s, 5.2gw/s).

DV TOOL @ 5000' - 2nd STG: 750 SX 35/65 POZ CLASS H w/ 6% GEL, 5% SALT & 1/4# FLOCELE (12.8ppg, 1.94cf/s, 10.4gw/s). F/B 250 SX CLASS H w/ 1/4# FLOCELE (15.6ppg, 1.18cf/s, 5.2gw/s).

THERE ARE NO OTHER OPERATORS IN THIS QUARTER QUARTER SECTION.

UNORTHODOX LOCATION - EXCEPTION HAS BEEN REQUESTED (COPY ATTACHED).

IN ABOVE SPACE DESCRIBE PROPOSED PROGRAM: IF PROPOSAL IS TO DEEPEN OR PLUG BACK, GIVE DATA ON PRESENT PRODUCTIVE ZONE AND PROPOSED NEW PRODUCTIVE ZONE. GIVE BLOWOUT PREVENTER PROGRAM, IF ANY.

I hereby certify that the information above is true and complete to the best of my knowledge and belief.

SIGNATURE C. P. Basham /cwH TITLE DRILLING OPERATIONS MANAGER DATE 09-02-92

TYPE OR PRINT NAME C. P. BASHAM

TELEPHONE NO. (915) 688-4620

(This space for State Use)

ORIGINAL SIGNED BY JERRY SEXTON
DISTRICT I SUPERVISOR

APPROVED BY

TITLE

DATE

CONDITIONS OF APPROVAL, IF ANY:

Permit Expires 6 Months From Approval
Date Unless Drilling Underway.

Submit to Appropriate
District Office
State Lease - 4 copies
Fee Lease - 3 copies

State of New Mexico
Energy, Minerals and Natural Resources Department

Form C-102
Revised 1-1-89

OIL CONSERVATION DIVISION

P.O. Box 2088
Santa Fe, New Mexico 87504-2088

DISTRICT I
P.O. Box 1980, Hobbs, NM 88240

DISTRICT II
P.O. Drawer DD, Artesia, NM 88210

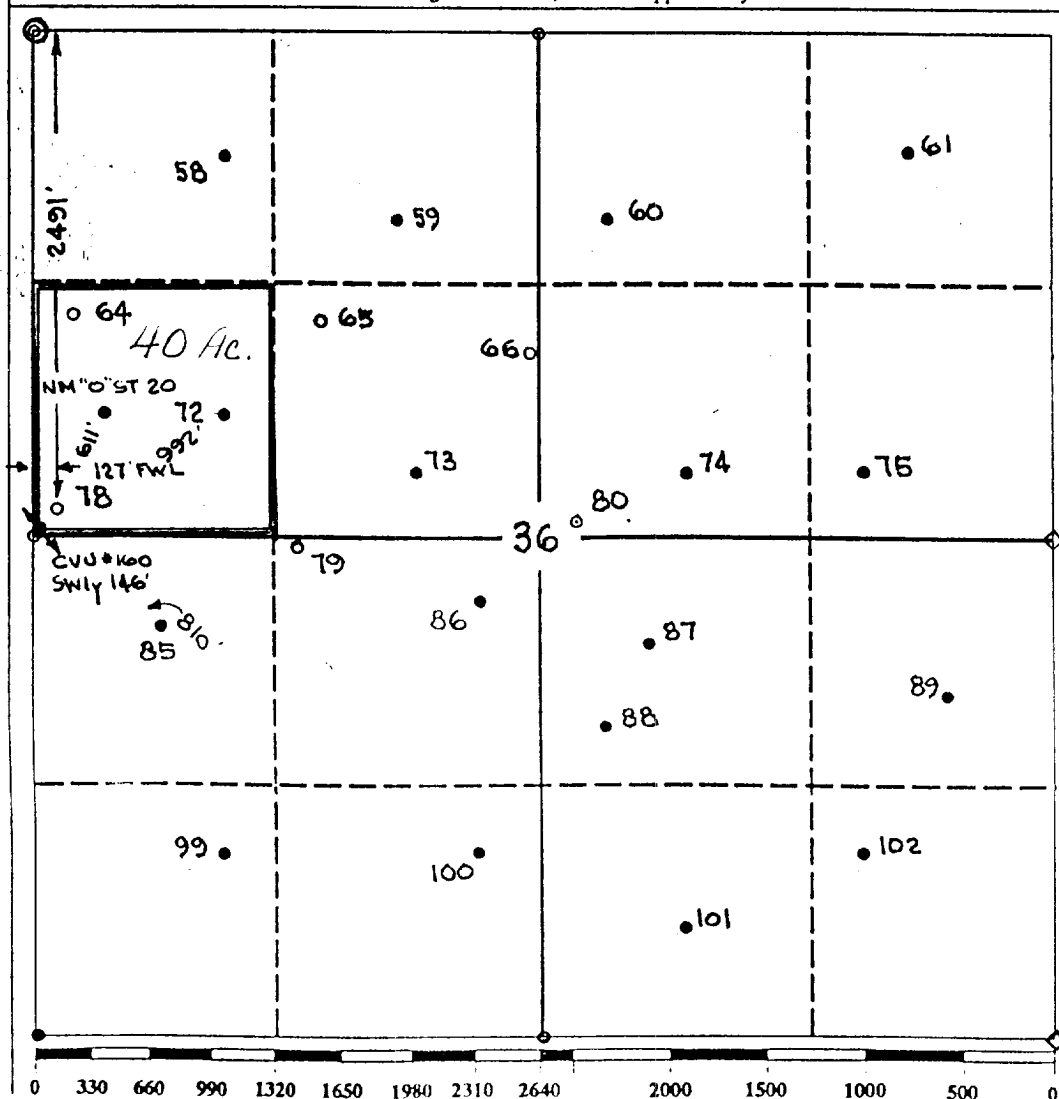
DISTRICT III
1000 Rio Brazos Rd., Aztec, NM 87410

WELL LOCATION AND ACREAGE DEDICATION PLAT

All Distances must be from the outer boundaries of the section

| | | | | | |
|---|--|----------------------|------------------------------------|--------------------------------|----------------|
| Operator TEXACO EXPL. AND PROD. Inc. | | | Lease VACUUM GLORIETA WEST UNIT | | Well No. 78 |
| Unit Letter E | Section 36 | Township 17-South | Range 34-East | County NMPM | Lea |
| Actual Footage Location of Well: 2491 feet from the North line and 127 feet from the West line | | | | | |
| Ground level Elev. 4005 | Producing Formation Glorieta; Paddock | | Pool Vacuum 3Glorieta Pool | Dedicated Acreage: 40 Acres | |

1. Outline the acreage dedicated to the subject well by colored pencil or hatchure marks on the plat below.
2. If more than one lease is dedicated to the well, outline each and identify the ownership thereof (both as to working interest and royalty).
3. If more than one lease of different ownership is dedicated to the well, have the interest of all owners been consolidated by communization, unitization, force-pooling, etc.?
☒ Yes ☐ No If answer is "yes" type of consolidation Unitization
If answer is "no" list the owners and tract descriptions which have actually been consolidated. (Use reverse side of this form if necessary).
No allowable will be assigned to the well until all interests have been consolidated (by communization, unitization, forced-pooling, or otherwise) or until a non-standard unit, eliminating such interest, has been approved by the Division.



OPERATOR CERTIFICATION

I hereby certify that the information contained herein is true and complete to the best of my knowledge and belief.

Signature
Royce D. Mariott

Printed Name
Royce D. Mariott

Position
Division Surveyor

Company
Texaco Expl. & Prod.

Date
September 2, 1992

SURVEYOR CERTIFICATION

I hereby certify that the well location shown on this plat was plotted from field notes of actual surveys made by me or under my supervision, and that the same is true and correct to the best of my knowledge and belief.

Date Surveyed
August 27, 1992

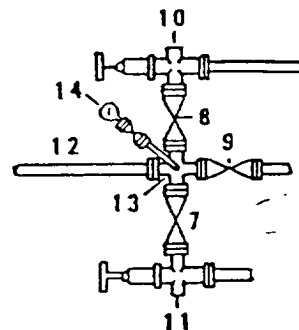
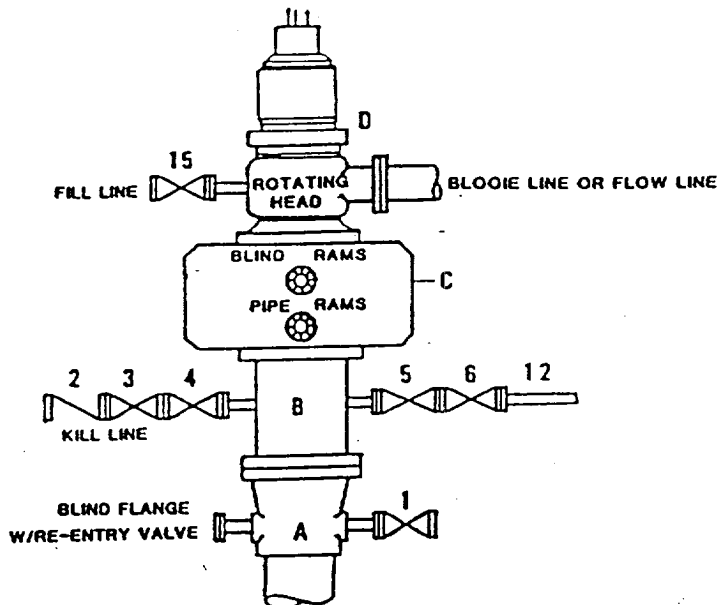
Signature & Seal of
Professional Surveyor

John S. Piper

Certificate No.
7254 John S. Piper

**DRILLING CONTROL
CONDITION II-B 3000 WP
FOR AIR DRILLING OR
WHERE NITROGEN OR AIR BLOWS ARE EXPECTED**

H₂S TRIM REQUIRED
YES ☒ NO ☐



DRILLING CONTROL

MATERIAL LIST - CONDITION II - B

- | | |
|----------------|--|
| A | Texaco Wellhead |
| B | 3000# W.P. drilling spool with a 2" minimum flanged outlet for kill line and 3" minimum flanged outlet for choke line. |
| C | 3000# W.P. Dual ram type preventer, hydraulic operated with 1" steel, 3000# W.P. control lines (where substructure height is adequate, 2 - 3000# W.P. single ram type preventers may be utilized). |
| D | Rotating Head with fill up outlet and extended Bloode Line. |
| 1,3,4, 7,8, | 2" minimum 3000# W.P. flanged full opening steel gate valve, or Halliburton Lo Torc Plug valve. |
| 2 | 2" minimum 3000# W.P. back pressure valve. |
| 5,6,9 | 3" minimum 3000# W.P. flanged full opening steel gate valve, or Halliburton Lo Torc Plug valve. |
| 12 | 3" minimum schedule 80, Grade "B", seamless line pipe. |
| 13 | 2" minimum x 3" minimum 3000# W.P. flanged cross. |
| 10,11 | 2" minimum 3000# W.P. adjustable choke bodies. |
| 14 | Cameron Mud Gauge or equivalent (location optional in choke line). |
| 15 | 2" minimum 3000# W.P. flanged or threaded full opening steel gate valve, or Halliburton Lo Torc Plug valve. |



TEXACO, INC.
MIDLAND DIVISION
MIDLAND, TEXAS



| | | | |
|-------------|------|----------|----------|
| SCALE | DATE | EST. NO. | ORG. NO. |
| DRAWN BY | | | |
| CHECKED BY | | | |
| APPROVED BY | | | |

EXHIBIT C