

(July 1989)

(formerly 9-5310)

CONTACT "T" DIVING
OFFICE JMWFR
OF COPIES REQUIRED
(Other instructions on
reverse side)

30-025-31756
BLM Roswell District
Modified Form No.
NMD60-3160-2

UNITED STATES
DEPARTMENT OF THE INTERIOR
BUREAU OF LAND MANAGEMENT

APPLICATION FOR PERMIT TO DRILL, DEEPEN, OR PLUG BACK

1a. TYPE OF WORK

DRILL ☒DEEPEN ☐PLUG BACK ☐

b. TYPE OF WELL

OIL
WELL ☒GAS
WELL ☐

OTHER

SINGLE
ZONE ☒MULTIPLE
ZONE ☐

2. NAME OF OPERATOR

Siete Oil and Gas Corporation

3a. Area Code & Phone No.

(505)622-2202

3. ADDRESS OF OPERATOR

P.O. Box 2523, Roswell, NM 88202-2523

4. LOCATION OF WELL (Report location clearly and in accordance with any State requirements.)*

At surface

2310' FNL & 330' FWL, SW $\frac{1}{4}$ NW $\frac{1}{4}$, Unit Letter E

At proposed prod. zone same

14. DISTANCE IN MILES AND DIRECTION FROM NEAREST TOWN OR POST OFFICE*

16 miles Southeast of Loco Hills

15. DISTANCE FROM PROPOSED*

LOCATION TO NEAREST

PROPERTY OR LEASE LINE, FT.

(Also to nearest drlg. unit line, if any)

330

16. NO. OF ACRES IN LEASE

1004.23

17. NO. OF ACRES ASSIGNED
TO THIS WELL

40

18. DISTANCE FROM PROPOSED LOCATION*

TO NEAREST WELL, DRILLING, COMPLETED,

OR APPLIED FOR, ON THIS LEASE, FT.

1700'

19. PROPOSED DEPTH

10000'

20. ROTARY OR CABLE TOOLS

Rotary

21. ELEVATIONS (Show whether DF, RT, GR, etc.)

3750' GR

22. APPROX. DATE WORK WILL START*

ASAP

23.

PROPOSED CASING AND CEMENTING PROGRAM

HOLE SIZE	CASING SIZE	WEIGHT/FOOT	GRADE	THREAD TYPE	SETTING DEPTH	QUANTITY OF CEMENT
17 $\frac{1}{2}$ "	13 3/8"	54.4	J-55	8rd	350'	350 sxs circ
12 $\frac{1}{4}$ "	8 5/8"	24 & 32	J-55	8rd	2500'	725 sxs circ
7 7/8"	5 $\frac{1}{2}$ "	15.5 & 17	J-55/N80	8rd	10000'	1200 sxs (see tips)

Selectively perforate and treat pay zones.

Attachments:

Survey plat (C-102)
Supplemental Drilling Data
Surface Use Plan

IN ABOVE SPACE DESCRIBE PROPOSED PROGRAM: If proposal is to deepen or plug back, give data on present productive zone and proposed new productive zone. If proposal is to drill or deepen directionally, give pertinent data on subsurface locations and measured and true vertical depths. Give blowout preventer program, if any.

24.

SIGNED

Cathy Batley-Seely

TITLE

Drilling Technician

DATE

9/22/92

(This space for Federal or State office use)

PERMIT NO.

APPROVAL DATE

APPROVED BY

R. J. Hunter

TITLE

DATE

10-15-92

CONDITIONS OF APPROVAL, IF ANY:

APPROVAL SUBJECT TO

GENERAL REQUIREMENTS AND

SPECIAL STIPULATIONS

*See Instructions On Reverse Side

Submit to Appropriate
District Office
State Lease - 4 copies
Fee Lease - 3 copies

State of New Mexico
Energy, Minerals and Natural Resources Department

Form C-102
Revised 1-1-89

OIL CONSERVATION DIVISION

P.O. Box 2088
Santa Fe, New Mexico 87504-2088

DISTRICT I
P.O. Box 1980, Hobbs, NM 88240

DISTRICT II
P.O. Drawer DD, Artesia, NM 88210

DISTRICT III
1000 Rio Brazos Rd., Aztec, NM 87410

WELL LOCATION AND ACREAGE DEDICATION PLAT

All Distances must be from the outer boundaries of the section

Operator SIETE OIL & GAS CORPORATION			Lease INCA FEDERAL		Well No. 12
Unit Letter E	Section 17	Township 18 SOUTH	Range 32 EAST	County LEA COUNTY, NM	
Actual Footage Location of Well: 2310 feet from the NORTH line and 330 feet from the WEST line					
Ground level Elev. 3750.	Producing Formation Wolfcamp		Pool Young North	Dedicated Acreage: 40 Acres	

1. Outline the acreage dedicated to the subject well by colored pencil or hachure marks on the plat below.

2. If more than one lease is dedicated to the well, outline each and identify the ownership thereof (both as to working interest and royalty).

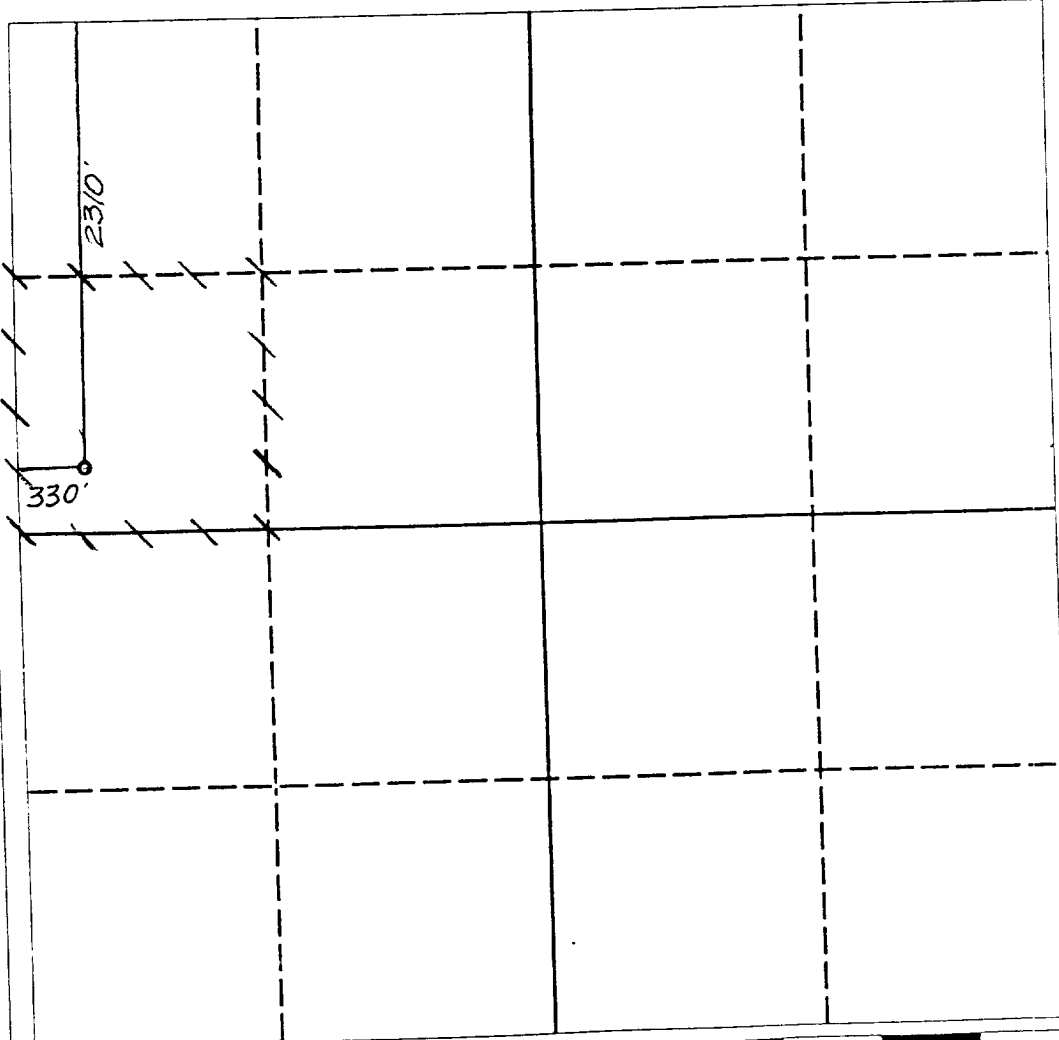
3. If more than one lease of different ownership is dedicated to the well, have the interest of all owners been consolidated by communitization, unitization, force-pooling, etc.?

☐ Yes ☐ No

If answer is "yes" type of consolidation

If answer is "no" list the owners and tract descriptions which have actually been consolidated. (Use reverse side of this form if necessary.)

No allowable will be assigned to the well until all interests have been consolidated (by communitization, unitization, forced-pooling, or otherwise) or until a non-standard unit, eliminating such interest, has been approved by the Division.



OPERATOR CERTIFICATION

I hereby certify that the information contained herein is true and complete to the best of my knowledge and belief.

Signature

Harold D. Justice

Printed Name

Harold D. Justice

Position

Executive Vice President

Company

Siete Oil & Gas Corp.

Date

September 22, 1992

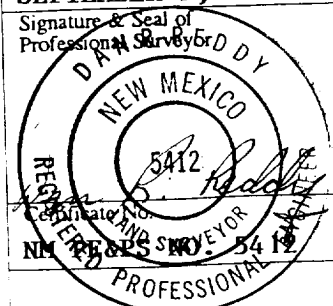
SURVEYOR CERTIFICATION

I hereby certify that the well location shown on this plat was plotted from field notes of actual surveys made by me or under my supervision, and that the same is true and correct to the best of my knowledge and belief.

Date Surveyed

SEPTEMBER 9, 1992

Signature & Seal of Professional Surveyor



0 330 660 990 1320 1650 1980 2310 2640 2000 1500 1000 500 0

SUPPLEMENTAL DRILLING DATA
SIETE OIL AND GAS CORPORATION

INCA FEDERAL #12
2310' FNL & 330' FWL
Section 17: T18S, R32E
Lea County, New Mexico
Lease Number: NM-9016

The following items supplement "Onshore Oil and Gas Order No. 1":

1. The geologic surface is quaternary.
2. The estimated geological marker tops:

Yates	2470'
Queen	3700'
Delaware	4595'
Bone Spring	6290'
Wolfcamp	9900'

3. Estimated depths to water, oil or gas:

Water: Approx. 350'
Oil or Gas: 9900'

4. Proposed casing program:

<u>Size</u>	<u>Interval</u>	<u>Weight</u>	<u>Grade</u>	<u>Joint</u>	<u>New or Used</u>
13 3/8"	0 - 350'	54.4#	J-55	ST&C	New
8 5/8"	0 - 2200'	24# & 32#	J-55	ST&C	New
5 1/2"	0 - T.D.	20# & 17#	K-55 N80	ST&C	New

5. Pressure Control Equipment: The blowout preventer will be a double ram type preventer. A sketch is attached.

6. Mud Program:

0-350':	Native mud adding gel & lime for sufficient viscosity to insure clean hole for running casing.
350-2200':	Drill out with native becoming brine.
2200'-T.D.:	Drill out of intermediate with brine, add starch and salt gel to maintain a viscosity of 30; mud weight 9.8-10.0; viscosity @ T.D. 40.0.

7. Auxiliary Equipment: A kelly cock will be installed on the rig floor while drilling operations are in progress.

8. Testing, logging & coring programs: Possibly 2 DST's are planned. We anticipate running a CNL/LDT & DLL/MSFL @ 2200'-T.D.

9. No abnormal pressures or temperature zones are anticipated. We haven't encountered H₂S while drilling formations from surface to T.D. in this area. Therefore, we do not have any contingency plans for this well.

10. Anticipated starting date: Commence drilling operations ASAP.

BOP DIAGRAM

RATED 3000#

