

Submit to Appropriate
District Office
State Lease - 6 copies
Fee Lease - 5 copies

State of New Mexico
Energy, Minerals and Natural Resources Department

Form C-101
Revised 1-1-89

OIL CONSERVATION DIVISION
P.O. Box 2088
Santa Fe, New Mexico 87504-2088

DISTRICT I
P.O. Box 1980, Hobbs, NM 88240

DISTRICT II
P.O. Drawer DD, Artesia, NM 88210

DISTRICT III
1000 Rio Brazos Rd., Aztec, NM 87410

API NO. (assigned by OCD on New Wells) <u>30-025-31783</u>	
5. Indicate Type of Lease STATE <input checked="" type="checkbox"/> FEE <input type="checkbox"/>	
6. State Oil & Gas Lease No. B-1520-1	
7. Lease Name or Unit Agreement Name VACUUM GLORIETA WEST UNIT	
8. Well No. 19	
9. Pool name or Wildcat VACUUM GLORIETA	
10. Proposed Depth 6300'	
11. Formation GLORIETA/PADDOCK	
12. Rotary or C.T. ROTARY	
13. Elevations (Show whether DF, RT, GR, etc.) GR-3997'	
14. Kind & Status Plug. Bond BLANKET	
15. Drilling Contractor TMBR/SHARP	
16. Approx. Date Work will start NOVEMBER 10, 1992	

APPLICATION FOR PERMIT TO DRILL, DEEPEN, OR PLUG BACK

1a. Type of Work:
DRILL ☒ RE-ENTER ☐ DEEPEN ☐ PLUG BACK ☐
b. Type of Well:
OIL WELL ☐ GAS WELL ☐ OTHER WATER INJECTION ☐ SINGLE ZONE ☒ MULTIPLE ZONE ☐

2. Name of Operator
TEXACO EXPLORATION AND PRODUCTION INC.

3. Address of Operator
P. O. Box 3109, Midland, Texas 79702

4. Well Location
Unit Letter G : 1501 Feet From The NORTH Line and 1620 Feet From The EAST Line
Section 25 Township 17-SOUTH Range 34-EAST NMPM LEA County

17. PROPOSED CASING AND CEMENT PROGRAM					
SIZE OF HOLE	SIZE OF CASING	WEIGHT PER FOOT	SETTING DEPTH	SACKS OF CEMENT	EST. TOP
17 1/2	13 3/8	48#	40'	REDI-MIX	SURFACE
11	8 5/8	24#	1550'	500	SURFACE
7 7/8	5 1/2	15.5#	6300'	1300	SURFACE

CEMENTING PROGRAM: CONDUCTOR - REDIMIX.
SURFACE CASING - 300 SX CLASS C w/ 4% GEL & 2% CaCl₂ (13.5ppg, 1.74cf/s, 9.1gw/s). F/B 200 SX CLASS C w/ 2% CaCl₂ (14.8ppg, 1.34cf/s, 6.3gw/s).
PRODUCTION CASING - 1st STG: 300 SX CLASS H w/ 1/4# FLOCELE (15.6ppg, 1.18cf/s, 5.2gw/s).
DV TOOL @ 5000' - 2nd STG: 750 SX 35/65 POZ CLASS H w/ 6% GEL, 5% SALT & 1/4# FLOCELE (12.8ppg, 1.94cf/s, 10.4gw/s). F/B 250 SX CLASS H w/ 1/4# FLOCELE (15.6ppg, 1.18cf/s, 5.2gw/s).

MOBIL OPERATES A WELL IN THIS QUARTER SECTION AND HAS BEEN FURNISHED A COPY OF THIS APPLICATION.

UNORTHODOX LOCATION - GRANTED UNDER ORDER No. R-9714. LOCATION WAS MOVED 100' WEST BECAUSE OF A BURIED PIPELINE. APPROVAL FOR THE AMENDED LOCATION HAS BEEN FILED IN SANTA FE. (COPY ATTACHED)

IN ABOVE SPACE DESCRIBE PROPOSED PROGRAM: IF PROPOSAL IS TO DEEPEN OR PLUG BACK, GIVE DATA ON PRESENT PRODUCTIVE ZONE AND PROPOSED NEW PRODUCTIVE ZONE. GIVE BLOWOUT PREVENTER PROGRAM, IF ANY.

I hereby certify that the information above is true and complete to the best of my knowledge and belief.

SIGNATURE C.P. Basham /cwh TITLE DRILLING OPERATIONS MANAGER DATE 11-02-92

TYPE OR PRINT NAME C. P. BASHAM

TELEPHONE NO. (915) 688-4621

(This space for State Use)

ORIGINAL SIGNED BY RECEIVED

DATE NOV 18 '92

APPROVED BY

TITLE

CONDITIONS OF APPROVAL, IF ANY:

Injection R 9714

see letter 11-10-92

Permit Expires 6 Months From Approval
Date Unless Drilling Underway

OIL CONSERVATION DIVISION

P.O. Box 2088
Santa Fe, New Mexico 87504-2088

DISTRICT I

P.O. Box 1980, Hobbs, NM 88240

DISTRICT II

P.O. Drawer DD, Artesia, NM 88210

DISTRICT III

1000 Rio Brazos Rd., Aztec, NM 87410

WELL LOCATION AND ACREAGE DEDICATION PLAT

All Distances must be from the outer boundaries of the section

Operator TEXACO EXPL. AND PROD. Inc.			Lease VACUUM GLORIETA WEST UNIT		Well No. 19
Unit Letter G	Section 25	Township 17-South	Range 34-East	County NMPM Lea	
Actual Footage Location of Well: 1501 feet from the North line and 1620 feet from the East line					
Ground level Elev. 3997	Producing Formation Glorieta; Paddock		Pool Vacuum Glorieta Pool		Dedicated Acreage: 40 Acres

1. Outline the acreage dedicated to the subject well by colored pencil or hatchure marks on the plat below.

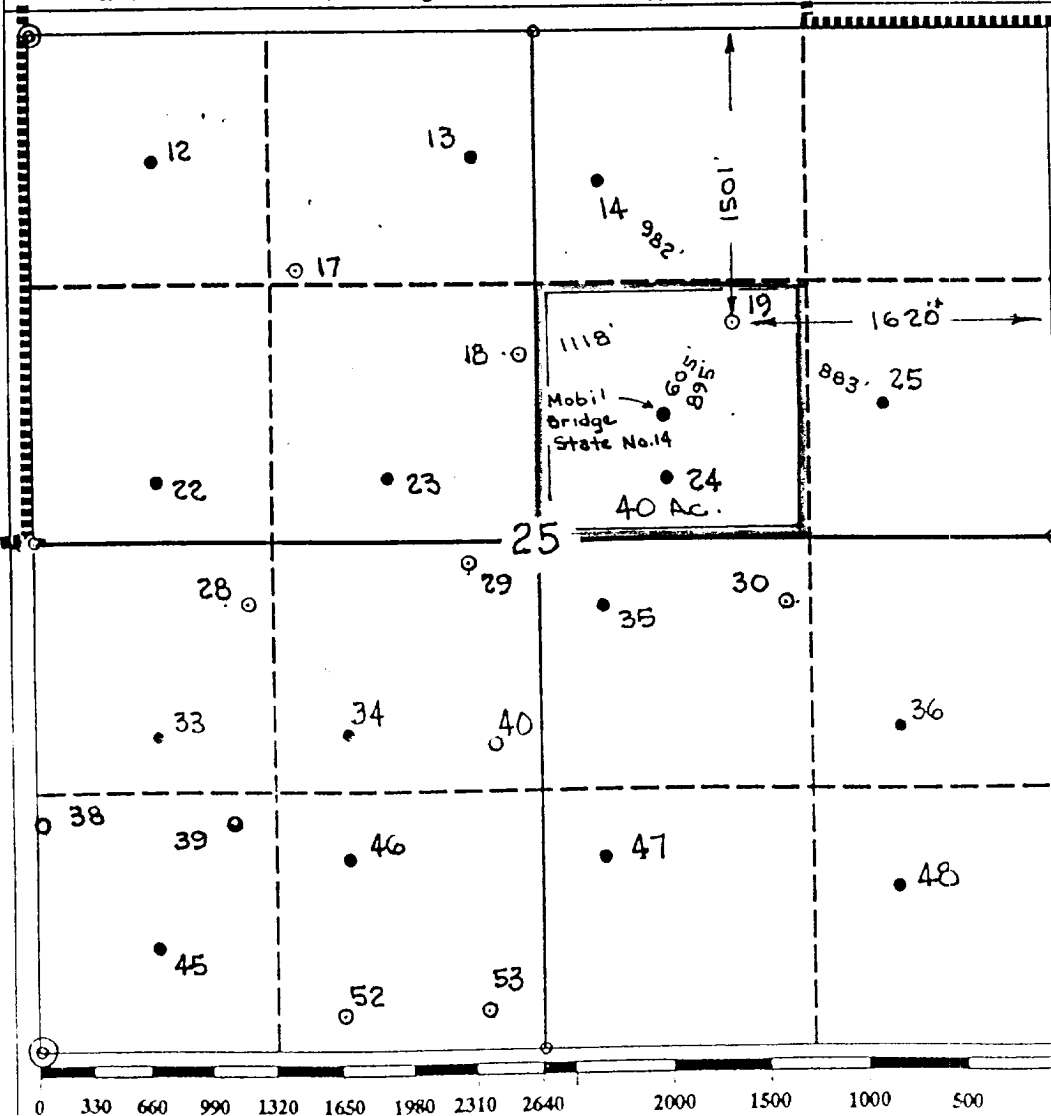
2. If more than one lease is dedicated to the well, outline each and identify the ownership thereof (both as to working interest and royalty).

3. If more than one lease of different ownership is dedicated to the well, have the interest of all owners been consolidated by communitization, unitization, force-pooling, etc.?

☒ Yes ☐ No If answer is "yes" type of consolidation Unitization

If answer is "no" list the owners and tract descriptions which have actually been consolidated. (Use reverse side of this form if necessary.)

No allowable will be assigned to the well until all interests have been consolidated (by communitization, unitization, forced-pooling, or otherwise) or until a non-standard unit, eliminating such interest, has been approved by the Division.



OPERATOR CERTIFICATION

I hereby certify that the information contained herein is true and complete to the best of my knowledge and belief.

Signature

Printed Name

Royce D. Mariott

Position

Division Surveyor

Company

Texaco Expl. & Prod.

Date

November 2, 1992

SURVEYOR CERTIFICATION

I hereby certify that the well location shown on this plat was plotted from field notes of actual surveys made by me or under my supervision, and that the same is true and correct to the best of my knowledge and belief.

Date Surveyed

October 29, 1992

Signature & Seal of
Professional Surveyor

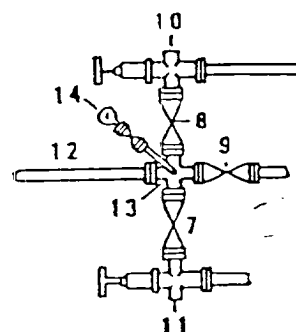
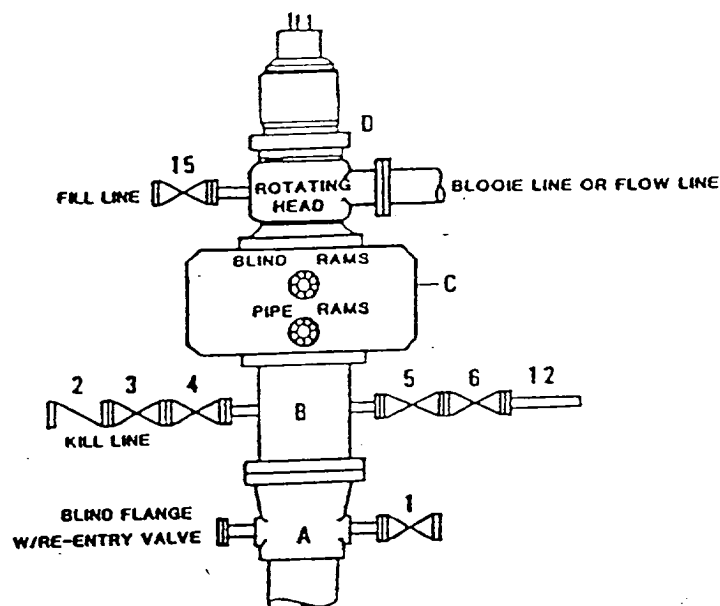
John S. Piper

Certificate No.

7254 J.S. Piper

DRILLING CONTROL
CONDITION II-B 3000 WP
FOR AIR DRILLING OR
WHERE NITROGEN OR AIR BLOWS ARE EXPECTED

H₂S TRIM REQUIRED
 YES ☒ NO ☐



DRILLING CONTROL
MATERIAL LIST - CONDITION II - B

- | | |
|------------|---|
| A | Texaco Wellhead |
| B | 3000# W.P. drilling spool with a 2" minimum flanged outlet for kill line and 3" minimum flanged outlet for choke line. |
| C | 3000# W.P. Dual ram type preventer, hydraulic operated with 1" steel, 3000# W.P. control lines (where sub-structure height is adequate, 2 - 3000# W.P. single ram type preventers may be utilized). |
| D | Rotating Head with fill up outlet and extended Bloode Line. |
| 1,3,4,7,8, | 2" minimum 3000# W.P. flanged full opening steel gate valve, or Halliburton Lo Torc Plug valve. |
| 2 | 2" minimum 3000# W.P. back pressure valve. |
| 5,6,9 | 3" minimum 3000# W.P. flanged full opening steel gate valve, or Halliburton Lo Torc Plug valve. |
| 12 | 3" minimum schedule 40, Grade "B", seamless line pipe. |
| 13 | 2" minimum x 3" minimum 3000# W.P. flanged crane. |
| 10,11 | 2" minimum 3000# W.P. adjustable choke bodies. |
| 14 | Cameron Mud Gauge or equivalent (location optional in choke line). |
| 15 | 2" minimum 3000# W.P. flanged or threaded full opening steel gate valve, or Halliburton Lo Torc Plug valve. |



TEXACO INC.
 MIDLAND OFFICE
 MIDLAND, TEXAS



SCALE	DATE	REV.	CHKD BY

EXHIBIT C



Texaco USA
Producing Department
Midland Division

PO Box 3109
Midland TX 79702-3109

November 2, 1992

GOV - STATE AND LOCAL GOVERNMENTS
Unorthodox Locations
Vacuum Glorieta West Unit
Well Nos. 17 and 19
Lea County, New Mexico

State of New Mexico
Energy and Minerals Department
Oil Conservation Division
P. O. Box 2088
Santa Fe, New Mexico 87501-2088

Attention: Mr. David R. Catanach

Gentlemen:

Texaco Exploration and Production Inc. respectfully submits, for administrative approval, amended drilling locations for the captioned injection wells under Order No. R-9714.

Well No. 17 had to be moved 100' North because of a buried pipeline and Well No. 19 had to be moved 100' West because of a buried pipeline.

Attached are Forms C-102, showing the amended locations for each well.

Yours very truly,

C. P. Basham / CWH

C. P. Basham
Drilling Operations Manager

CWH:cwh

cc:NMOCD, P. O. Box 1980, Hobbs, NM 88240