

Submit to Appropriate  
District Office  
State Lease - 6 copies  
Fee Lease - 5 copies

State of New Mexico  
Energy, Minerals and Natural Resources Department

Form C-101  
Revised 1-1-89

OIL CONSERVATION DIVISION

DISTRICT I  
P.O. Box 1980, Hobbs, NM 88240

P.O. Box 2088  
Santa Fe, New Mexico 87504-2088

DISTRICT II  
P.O. Drawer DD, Artesia, NM 88210

DISTRICT III  
1000 Rio Brazos Rd., Aztec, NM 87410

API NO. (assigned by OCD on New Wells)  
30-025-31841

5. Indicate Type of Lease  
STATE ☒ FEB ☐

6. State Oil & Gas Lease No.  
B-155-8

APPLICATION FOR PERMIT TO DRILL, DEEPEN, OR PLUG BACK

1a. Type of Work: DRILL <input checked="" type="checkbox"/> RE-ENTER <input type="checkbox"/> DEEPEN <input type="checkbox"/> PLUG BACK <input type="checkbox"/>		7. Lease Name or Unit Agreement Name VACUUM GLORIETA WEST UNIT
b. Type of Well: OIL WELL <input type="checkbox"/> GAS WELL <input type="checkbox"/> OTHER WATER INJECTION <input type="checkbox"/> SINGLE ZONE <input checked="" type="checkbox"/> MULTIPLE ZONE <input type="checkbox"/>		
2. Name of Operator TEXACO EXPLORATION AND PRODUCTION INC.		8. Well No. 94
3. Address of Operator P. O. Box 3109, Midland, Texas 79702		9. Pool name or Wildcat VACUUM GLORIETA

4. Well Location  
Unit Letter J : 1525 Feet From The SOUTH Line and 2591 Feet From The EAST Line  
Section 36 Township 17-SOUTH Range 34-EAST NMPM LEA County

10. Proposed Depth 6280'		11. Formation GLORIETA/PADDOCK	12. Rotary or C.T. ROTARY
13. Elevations (Show whether DP, RT, GR, etc.) GR-3994'	14. Kind & Status Plug. Bond BLANKET	15. Drilling Contractor TMBR/SHARP	16. Approx. Date Work will start DECEMBER 30, 1992

17. PROPOSED CASING AND CEMENT PROGRAM					
SIZE OF HOLE	SIZE OF CASING	WEIGHT PER FOOT	SETTING DEPTH	SACKS OF CEMENT	EST. TOP
14 3/4	11 3/4	42#	1550'	840	SURFACE
11	8 5/8	32#	3000'	1000	SURFACE
7 7/8	5 1/2	15.5# & 17#	6280'	1350	SURFACE

CEMENTING PROGRAM:

SURFACE CASING - 560 SX CLASS C w/ 4% GEL & 2% CaCl<sub>2</sub> (13.5ppg, 1.74cf/s, 9.1gw/s). F/B 280 SX CLASS C w/ 2% CaCl<sub>2</sub> (14.8ppg, 1.34cf/s, 6.3gw/s).

INTERMEDIATE CASING - 1st STG: 300 SX 35/65 POZ CLASS H w/ 6% GEL, 5% SLAT, 1/4# FLOCELE (12.8ppg, 1.94cf/s, 10.4gw/s). F/B 200 SACKS CLASS H w/ 2% CaCl<sub>2</sub> (15.6ppg, 1.19cf/s, 5.2gw/s). DV TOOL @ 1580'. 2nd STG: 500 SX CLASS H w/ 2% CaCl<sub>2</sub> (15.6ppg, 1.19cf/s, 5.2gw/s).

PRODUCTION CASING - 1st STG: 350 SX CLASS H (15.6ppg, 1.18cf/s, 5.2gw/s).

DV TOOL @ 5000' - 2nd STG: 900 SX 35/65 POZ CLASS H w/ 6% GEL, 5% SALT & 1/4# FLOCELE (12.8ppg, 1.94cf/s, 10.4gw/s). F/B 100 SX CLASS H (15.6ppg, 1.18cf/s, 5.2gw/s).

THERE ARE NO OTHER OPERATORS IN THIS QUARTER QUARTER SECTION.

UNORTHODOX LOCATION - GRANTED UNDER ORDER No. R-9714.

IN ABOVE SPACE DESCRIBE PROPOSED PROGRAM: IF PROPOSAL IS TO DEEPEN OR PLUG BACK, GIVE DATA ON PRESENT PRODUCTIVE ZONE AND PROPOSED NEW PRODUCTIVE ZONE. GIVE BLOWOUT PREVENTER PROGRAM, IF ANY.

I hereby certify that the information above is true and complete to the best of my knowledge and belief.

SIGNATURE C. P. Basham /cutt TITLE DRILLING OPERATIONS MANAGER DATE 12-17-92

TYPE OR PRINT NAME C. P. BASHAM TELEPHONE NO. (915) 688-

(This space for State Use) ORIGINAL SIGNED BY JERRY SEXTON  
DISTRICT I SUPERVISOR

APPROVED BY \_\_\_\_\_ TITLE \_\_\_\_\_ DATE DEC 21 '92

CONDITIONS OF APPROVAL, IF ANY:

Permit Expires 6 Months From Approval  
Date Unless Drilling Underway.

NBZ + Inspection R-9714

# OIL CONSERVATION DIVISION

P.O. Box 2088  
Santa Fe, New Mexico 87504-2088

DISTRICT I  
P.O. Box 1980, Hobbs, NM 88240

DISTRICT II  
P.O. Drawer DD, Artesia, NM 88210

DISTRICT III  
1000 Rio Brazos Rd., Aztec, NM 87410

## WELL LOCATION AND ACREAGE DEDICATION PLAT

All Distances must be from the outer boundaries of the section

Operator <b>TEXACO EXPL. AND PROD. Inc.</b>			Lease <b>VACUUM GLORIETA WEST UNIT</b>		Well No. <b>94</b>
Unit Letter <b>J</b>	Section <b>36</b>	Township <b>17-South</b>	Range <b>34-East</b>	County <b>NMPM Lea</b>	
Actual Footage Location of Well: <b>1525</b> feet from the <b>South</b> line and <b>2591</b> feet from the <b>East</b> line					
Ground level Elev. <b>3994</b>	Producing Formation <b>Glorieta; Paddock</b>		Pool <b>Vacuum Glorieta Pool</b>	Dedicated Acreage: <b>40</b> Acres	

1. Outline the acreage dedicated to the subject well by colored pencil or hatchure marks on the plat below.

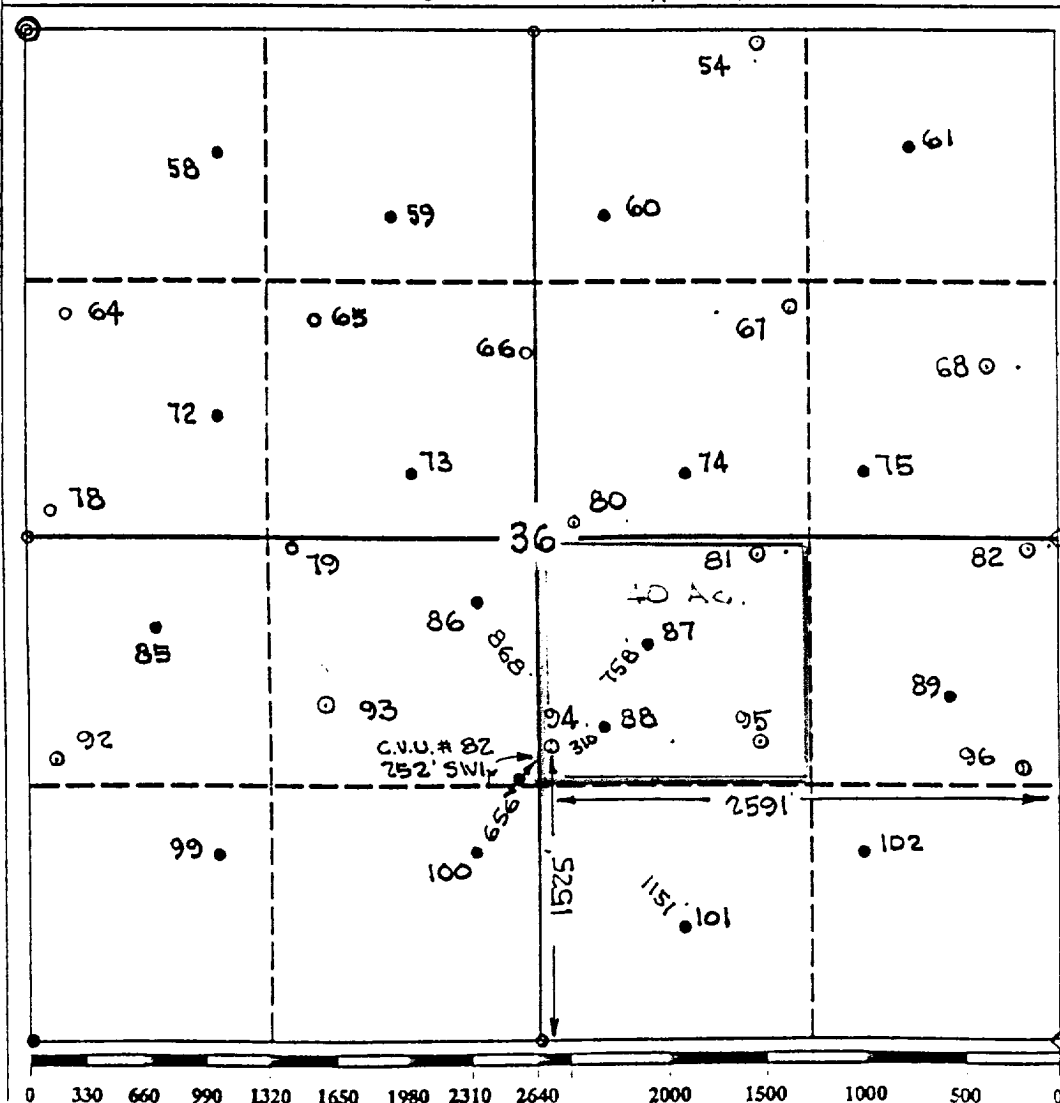
2. If more than one lease is dedicated to the well, outline each and identify the ownership thereof (both as to working interest and royalty).

3. If more than one lease of different ownership is dedicated to the well, have the interest of all owners been consolidated by communitization, unitization, force-pooling, etc.?

☒ Yes ☐ No If answer is "yes" type of consolidation Unitization

If answer is "no" list the owners and tract descriptions which have actually been consolidated. (Use reverse side of this form if necessary.)

No allowable will be assigned to the well until all interests have been consolidated (by communitization, unitization, forced-pooling, or otherwise) or until a non-standard unit, eliminating such interest, has been approved by the Division.



### OPERATOR CERTIFICATION

I hereby certify that the information contained herein is true and complete to the best of my knowledge and belief.

Signature  
*Royce D. Mariott*

Printed Name  
**Royce D. Mariott**

Position  
**Division Surveyor**

Company  
**Texaco Expl. & Prod.**

Date  
**December 10, 1992**

### SURVEYOR CERTIFICATION

I hereby certify that the well location shown on this plat was plotted from field notes of actual surveys made by me or under my supervision, and that the same is true and correct to the best of my knowledge and belief.

Date Surveyed  
**December 7, 1992**

Signature & Seal of  
Professional Surveyor

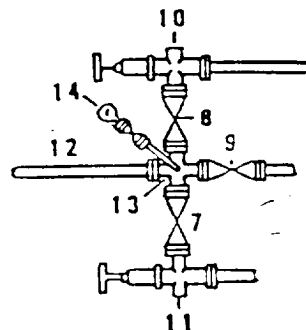
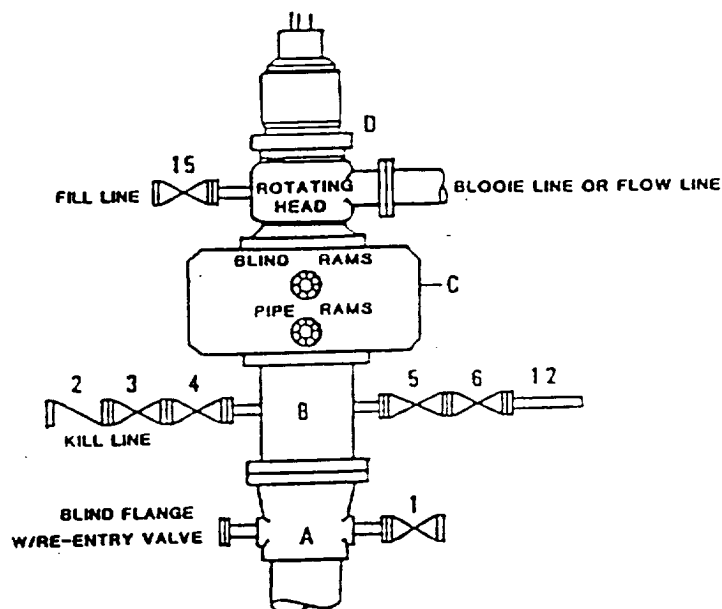
*John S. Piper*

Certificate No.  
**7/254 John S. Piper**

**DRILLING CONTROL  
CONDITION II-B 3000 WP  
FOR AIR DRILLING OR  
WHERE NITROGEN OR AIR BLOWS ARE EXPECTED**

H<sub>2</sub>S TRIM REQUIRED

YES X NO       



DRILLING CONTROL

MATERIAL LIST - CONDITION II - B

- |                |   |
|----------------|---|
| A              | Texaco Wellhead   |
| B              | 3000# W.P. drilling spool with a 2" minimum flanged outlet for kill line and 3" minimum flanged outlet for choke line.  |
| C              | 3000# W.P. Dual ram type preventer, hydraulic operated with 1" steel, 3000# W.P. control lines (where sub-structure height is adequate, 2 - 3000# W.P. single ram type preventers may be utilized). |
| D              | Rotating Head with fill up outlet and extended Bloode Line.   |
| 1,3,4,<br>7,8, | 2" minimum 3000# W.P. flanged full opening steel gate valve, or Halliburton Lo Torc Plug valve.   |
| 2              | 2" minimum 3000# W.P. back pressure valve.  |
| 10,11          | 2" minimum 3000# W.P. flanged adjustable choke bodies.  |
| 12             | 1" minimum schedule 80, Grade "B", seamless line pipe.  |
| 13             | 2" minimum x 3" minimum 3000# W.P. flanged cross.   |
| 14             | Cameron Mud Gauge or equivalent ( location optional in choke line).   |
| 15             | 2" minimum 3000# W.P. flanged or threaded full opening steel gate valve, or Halliburton Lo Torc Plug valve.   |



TEXACO, INC.  
MIDLAND DIVISION  
MIDLAND, TEXAS



SCALE	DATE	EST. NO.	DRG. NO.
DRAWN BY			
CHECKED BY			

EXHIBIT C