

Submit to Appropriate
District Office
State Lease - 6 copies
Fee Lease - 5 copies

State of New Mexico
Energy, Minerals and Natural Resources Department

Form C-101
Revised 1-1-89

OIL CONSERVATION DIVISION

DISTRICT I
P.O. Box 1980, Hobbs, NM 88240

DISTRICT II
P.O. Drawer DD, Artesia, NM 88210

DISTRICT III
1000 Rio Brazos Rd., Aztec, NM 87410

P.O. Box 2088
Santa Fe, New Mexico 87504-2088

API NO. (assigned by OCD on New Wells)

30-025-31844

5. Indicate Type of Lease

STATE ☒

FEE ☐

6. State Oil & Gas Lease No.

B-155-8

APPLICATION FOR PERMIT TO DRILL, DEEPEN, OR PLUG BACK

1a. Type of Work:

DRILL ☒

RE-ENTER ☐

DEEPEN ☐

PLUG BACK ☐

b. Type of Well:

OIL
WELL ☐

GAS
WELL ☐

OTHER WATER INJECTION

SINGLE
ZONE ☒

MULTIPLE
ZONE ☐

7. Lease Name or Unit Agreement Name

VACUUM GLORIETA WEST UNIT

2. Name of Operator

TEXACO EXPLORATION AND PRODUCTION INC.

8. Well No.

96

3. Address of Operator

P. O. Box 3109, Midland, Texas 79702

9. Pool name or Wildcat

VACUUM GLORIETA

4. Well Location

Unit Letter I : 1427 Feet From The SOUTH Line and 183 Feet From The EAST Line

Section 36

Township 17-SOUTH

Range 34-EAST

NMPM

LEA

County

10. Proposed Depth

6343'

11. Formation

GLORIETA/PADDOCK

12. Rotary or C.T.

ROTARY

13. Elevations (Show whether DF, RT, GR, etc.)

GR-3986'

14. Kind & Status Plug. Bond

BLANKET

15. Drilling Contractor

TMBR/SHARP

16. Approx. Date Work will start

JANUARY 10, 1993

17.

PROPOSED CASING AND CEMENT PROGRAM

SIZE OF HOLE	SIZE OF CASING	WEIGHT PER FOOT	SETTING DEPTH	SACKS OF CEMENT	EST. TOP
14 3/4	11 3/4	42#	1550'	840	SURFACE
11	8 5/8	32#	3000'	1000	SURFACE
7 7/8	5 1/2	15.5# & 17#	6343'	1350	SURFACE

CEMENTING PROGRAM:

SURFACE CASING - 560 SX CLASS C w/ 4% GEL & 2% CaCl₂ (13.5ppg, 1.74cf/s, 9.1gw/s). F/B 280 SX CLASS C w/ 2% CaCl₂ (14.8ppg, 1.34cf/s, 6.3gw/s).

INTERMEDIATE CASING - 1st STG: 300 SX 35/65 POZ CLASS H w/ 6% GEL, 5% SLAT, 1/4# FLOCELE (12.8ppg, 1.94cf/s, 10.4gw/s). F/B 200 SACKS CLASS H w/ 2% CaCl₂ (15.6ppg, 1.19cf/s, 5.2gw/s). DV TOOL @ 1580'. 2nd STG: 500 SX CLASS H w/ 2% CaCl₂ (15.6ppg, 1.19cf/s, 5.2gw/s).

PRODUCTION CASING - 1st STG: 350 SX CLASS H (15.6ppg, 1.18cf/s, 5.2gw/s).

DV TOOL @ 5000' - 2nd STG: 900 SX 35/65 POZ CLASS H w/ 6% GEL, 5% SALT & 1/4# FLOCELE (12.8ppg, 1.94cf/s, 10.4gw/s). F/B 100 SX CLASS H (15.6ppg, 1.18cf/s, 5.2gw/s).

THERE ARE NO OTHER OPERATORS IN THIS QUARTER QUARTER SECTION.

UNORTHODOX LOCATION - GRANTED UNDER ORDER No. R-9714. LOCATION WAS MOVED BECAUSE OF AN ELECTRIC LINE. APPROVAL FOR THE AMENDED LOCATION HAS BEEN FILED IN SANTA FE. (COPY ATTACHED)

IN ABOVE SPACE DESCRIBE PROPOSED PROGRAM: IF PROPOSAL IS TO DEEPEN OR PLUG BACK, GIVE DATA ON PRESENT PRODUCTIVE ZONE AND PROPOSED NEW PRODUCTIVE ZONE. GIVE BLOWOUT PREVENTER PROGRAM, IF ANY.

I hereby certify that the information above is true and complete to the best of my knowledge and belief.

SIGNATURE C. P. Basham / cwt TITLE DRILLING OPERATIONS MANAGER DATE 12-21-92

TYPE OR PRINT NAME C. P. BASHAM

TELEPHONE NO. (915) 688-4620

(This space for State Use)

ORIGINAL SIGNED BY JERRY SEXTON

DISTRICT I SUPERVISOR

APPROVED BY _____ TITLE _____ DATE _____

CONDITIONS OF APPROVAL, IF ANY:

R-9714 amended 6/82

Permit Expires 6 Months From Approval
Date Unless Drilling Underway.

JAN 22 1993

Submit to Appropriate
District Office
State Lease - 4 copies
Fee Lease - 3 copies

State of New Mexico
Geology, Minerals and Natural Resources Department

Form C-102
Revised 1-1-89

OIL CONSERVATION DIVISION

DISTRICT I
P.O. Box 1980, Hobbs, NM 88240

P.O. Box 2088

Santa Fe, New Mexico 87504-2088

DISTRICT II
P.O. Drawer DD, Artesia, NM 88210

DISTRICT III
1000 Rio Brazos Rd., Aztec, NM 87410

WELL LOCATION AND ACREAGE DEDICATION PLAT

All Distances must be from the outer boundaries of the section

Operator TEXACO EXPL. AND PROD. Inc.			Lease VACUUM GLORIETA WEST UNIT		Well No. 96
Unit Letter I	Section 36	Township 17-South	Range 34-East	County Lea	
Actual Footage Location of Well: 1427 feet from the South line and 183 feet from the East line					
Ground level Elev. 3986	Producing Formation Glorieta; Paddock		Pool Vacuum Glorieta Pool	Dedicated Acreage: 40 Acres	

1. Outline the acreage dedicated to the subject well by colored pencil or hachure marks on the plat below.

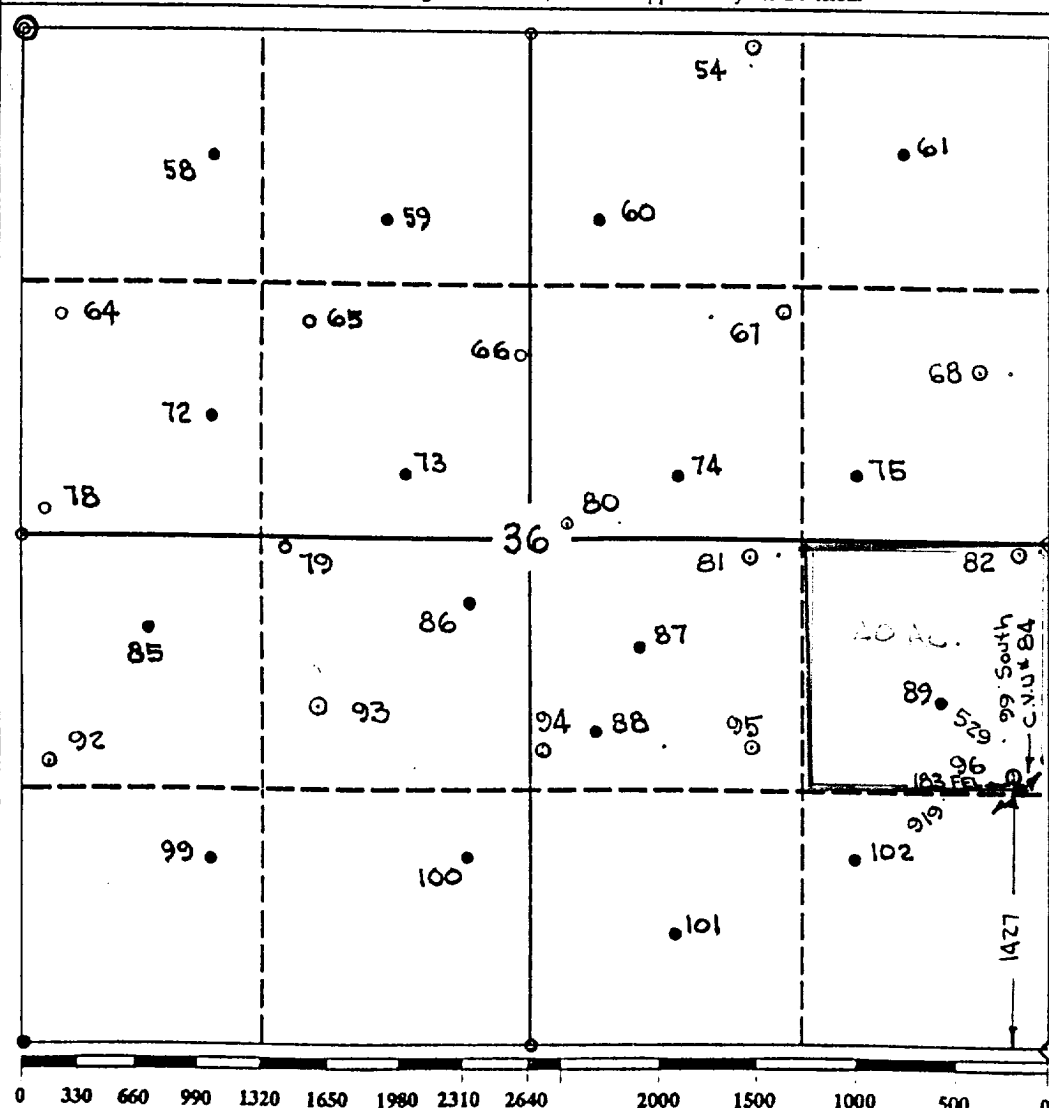
2. If more than one lease is dedicated to the well, outline each and identify the ownership thereof (both as to working interest and royalty).

3. If more than one lease of different ownership is dedicated to the well, have the interest of all owners been consolidated by communitization, unitization, force-pooling, etc.?

☒ Yes ☐ No If answer is "yes" type of consolidation Unitization

If answer is "no" list the owners and tract descriptions which have actually been consolidated. (Use reverse side of this form if necessary.)

No allowable will be assigned to the well until all interests have been consolidated (by communitization, unitization, forced-pooling, or otherwise) or until a non-standard unit, eliminating such interest, has been approved by the Division.



OPERATOR CERTIFICATION

I hereby certify that the information contained herein is true and complete to the best of my knowledge and belief.

Signature

Printed Name

Royce D. Mariott

Position

Division Surveyor

Company

Texaco Expl. & Prod.

Date

December 10, 1992

SURVEYOR CERTIFICATION

I hereby certify that the well location shown on this plat was plotted from field notes of actual surveys made by me or under my supervision, and that the same is true and correct to the best of my knowledge and belief.

Date Surveyed

December 7, 1992

Signature & Seal of
Professional Surveyor

John S. Piper

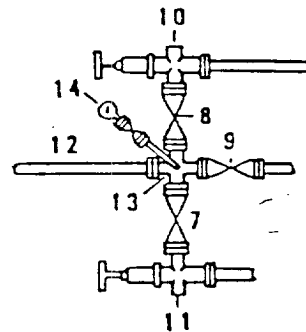
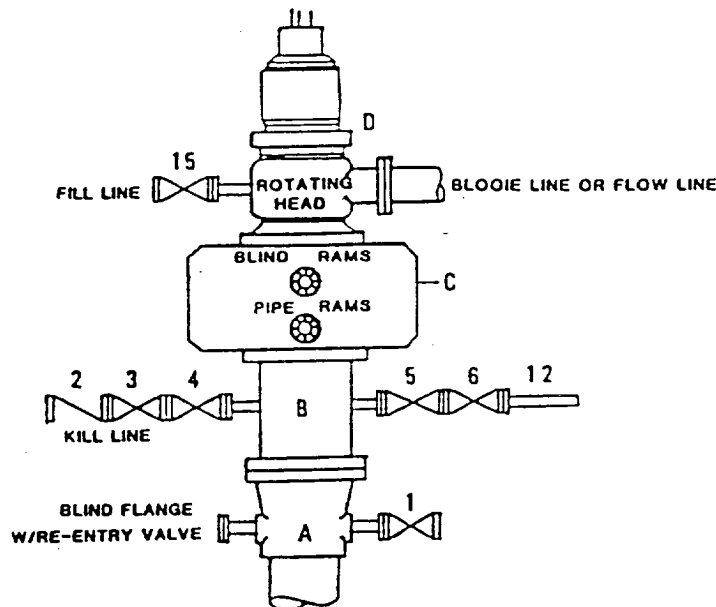
Certificate No.

7254 John S. Piper

Lea Co. FB. 6, Pg. 70

**DRILLING CONTROL
CONDITION II-B 3000 WP
FOR AIR DRILLING OR
WHERE NITROGEN OR AIR BLOWS ARE EXPECTED**

H₂S TRIM REQUIRED
YES X NO



DRILLING CONTROL

MATERIAL LIST - CONDITION II - B

- | | |
|----------------|---|
| A | Texaco Wellhead |
| B | 3000# W.P. drilling spool with a 2" minimum flanged outlet for kill line and 3" minimum flanged outlet for choke line. |
| C | 3000# W.P. Dual ram type preventer, hydraulic operated with 1" steel, 3000# W.P. control lines (where sub-structure height is adequate, 2 - 3000# W.P. single ram type preventers may be utilized). |
| D | Rotating Head with fill up outlet and extended Blooe Line. |
| 1,3,4,
7,8, | 2" minimum 3000# W.P. flanged full opening steel gate valve, or Halliburton Lo Torc Plug valve. |
| 2 | 2" minimum 3000# W.P. back pressure valve. |
| 5,6,9 | 3" minimum 3000# W.P. flanged full opening steel gate valve, or Halliburton Lo Torc Plug valve. |
| 12 | 3" minimum schedule 80, Grade "B", seamless line pipe. |
| 13 | 2" minimum x 3" minimum 3000# W.P. flanged cross. |
| 10,11 | 2" minimum 3000# W.P. adjustable choke bodies. |
| 14 | Cameron Mud Gauge or equivalent (location optional in choke line). |
| 15 | 2" minimum 3000# W.P. flanged or threaded full opening steel gate valve, or Halliburton Lo Torc Plug valve. |



TEXACO, INC.
MIDLAND CITY, TEX.
MIDLAND, TEXAS



SCALE	DATE	EST. NO.	DRG. NO.
DRAWN BY			
CHECKED BY			
APPROVED BY			

EXHIBIT C



Texaco USA
Producing Department
Midland Division

PO Box 3109
Midland TX 79702-3109

December 21, 1992

GOV - STATE AND LOCAL GOVERNMENTS

Unorthodox Locations
Vacuum Glorieta West Unit
Well Nos. 42, 81, 95, and 96
Lea County, New Mexico

State of New Mexico
Energy and Minerals Department
Oil Conservation Division
P. O. Box 2088
Santa Fe, New Mexico 87501-2088

Attention: Mr. Michael E. Stogner

Gentlemen:

Texaco Exploration and Production Inc. respectfully submits, for administrative approval, amended drilling locations for the captioned injection wells under Order No. R-9714.

Well Nos. 81 and 95 were moved because of pipelines. Well No. 96 was moved because of an electric line. Well No. 42, permitted December 4, 1992, had to be moved because an electric line.

Attached are Forms C-102 and a "detail" drawing showing the amended locations for each well.

Yours very truly,

C.P. Basham /cwh

C. P. Basham
Drilling Operations Manager

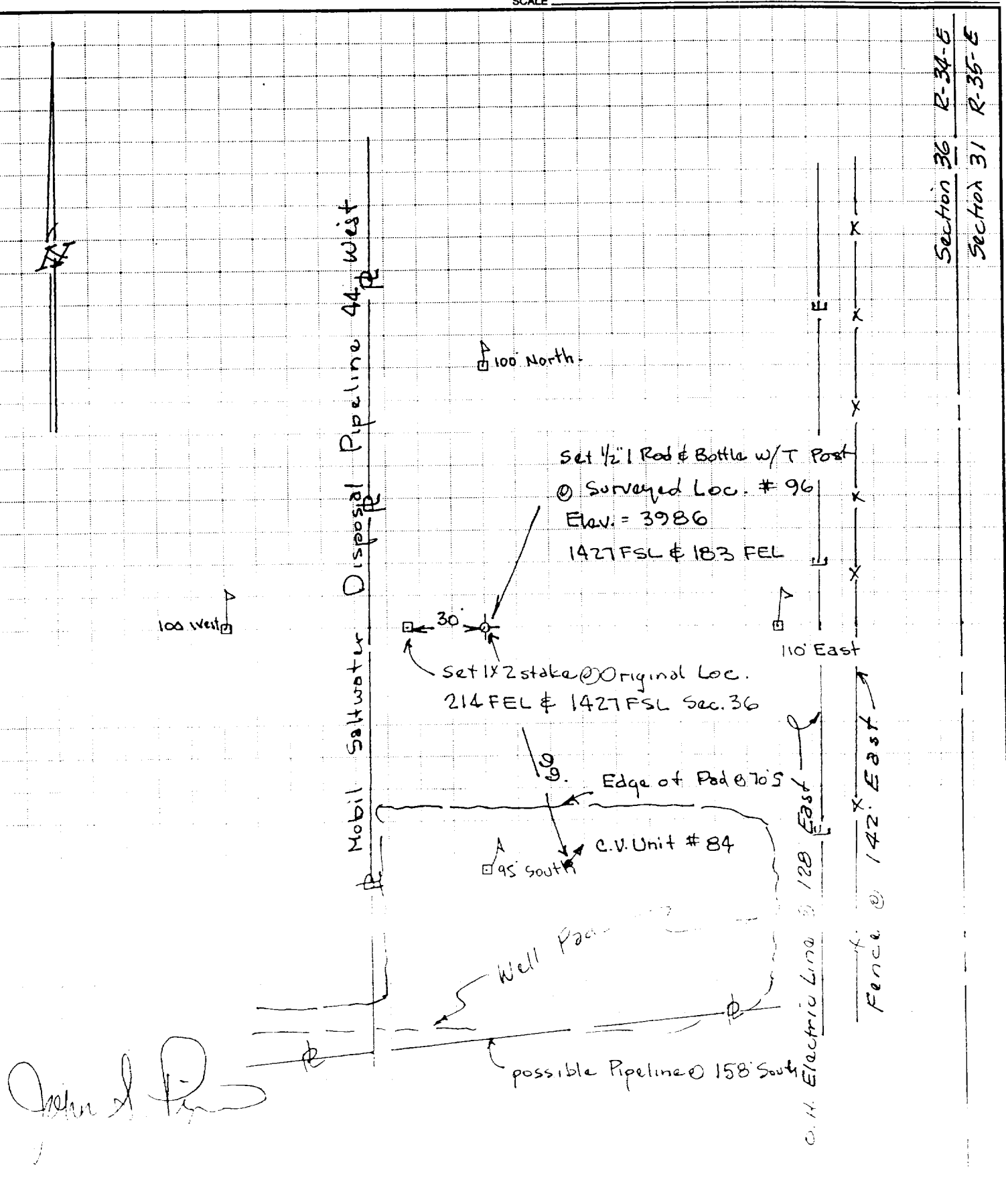
CWH:cwh

ENCLOSURE 12/21/92 10:00 AM 92040

PIPER SURVEYING COMPANY

P.O. Box 60432
MIDLAND, TEXAS 79711
(915) 550-7810

SHEET NO. 1 OF 2
CALCULATED BY O. Flores DATE 12/14/92
CHECKED BY J.S. Piper DATE 12/14/92
SCALE 1"=50 Feet

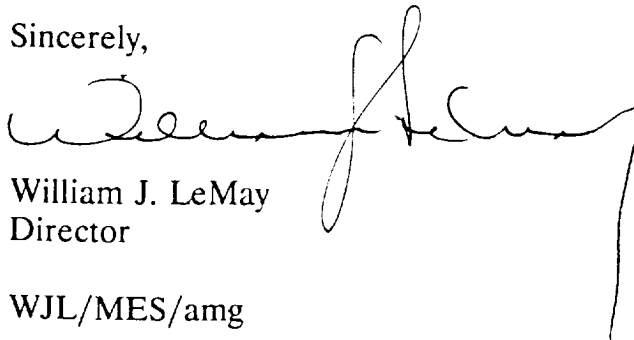


Texaco Exploration and Production
Attention: C. P. Basham
January 15, 1993
Page 2

<u>Lease Name</u>	<u>Corrected Footage Location</u>	<u>U-L-S-T-R</u>	<u>VGWU Well No.</u>
Swiggart	2520' FSL - 153' FEL	I-25-17S-34E	31
NM "N" State	1114' FSL - 41' FWL	M-30-17S-35E	42
NM "Q" State	51' FNL - 1588' FEL	B-36-17S-34E	54
NM "N" State	146' FSL - 128' FEL	P-25-17S-34E	55
NM "O" State	2521' FSL - 1503' FEL	J-36-17S-34E	81
NM "O" State NCT-1	1534' FSL - 1521' FEL	J-36-17S-34E	95
NM "O" State NCT-1	1427' FSL - 183' FEL	I-36-17S-34E	96

All other provisions of said Order No. R-9714 shall remain in full force and effect until further notice.

Sincerely,



William J. LeMay
Director

WJL/MES/amg

cc: Oil Conservation Division - Hobbs ✓
File: Case No. 10516
Oil Conservation Division - Michael E. Stogner
Oil Conservation Division - David R. Catanach