

Submit to Appropriate
District Office
State Lease - 6 copies
Fee Lease - 5 copies

State of New Mexico
Energy, Minerals and Natural Resources Department

Form C-101
Revised 1-1-89

OIL CONSERVATION DIVISION

P.O. Box 2088
Santa Fe, New Mexico 87504-2088

DISTRICT I
P.O. Box 1980, Hobbs, NM 88240

DISTRICT II
P.O. Drawer DD, Artesia, NM 88210

DISTRICT III
1000 Rio Brazos Rd., Aztec, NM 87410

API NO. (assigned by OCD on New Wells) 30-025-31880
5. Indicate Type of Lease STATE <input checked="" type="checkbox"/> FEE <input type="checkbox"/>
6. State Oil & Gas Lease No. B-155-6

APPLICATION FOR PERMIT TO DRILL, DEEPEN, OR PLUG BACK

1a. Type of Work: DRILL <input checked="" type="checkbox"/> RE-ENTER <input type="checkbox"/> DEEPEN <input type="checkbox"/> PLUG BACK <input type="checkbox"/>		7. Lease Name or Unit Agreement Name VACUUM GLORIETA WEST UNIT			
b. Type of Well: OIL WELL <input type="checkbox"/> GAS WELL <input type="checkbox"/> OTHER WATER INJECTION <input type="checkbox"/> SINGLE ZONE <input checked="" type="checkbox"/> MULTIPLE ZONE <input type="checkbox"/>		8. Well No. 105			
2. Name of Operator TEXACO EXPLORATION AND PRODUCTION INC.		9. Pool name or Wildcat VACUUM GLORIETA			
3. Address of Operator P. O. Box 3109, Midland, Texas 79702					
4. Well Location Unit Letter N : 453 Feet From The SOUTH Line and 1340 Feet From The WEST Line Section 36 Township 17-SOUTH Range 34-EAST NMPM LEA County					
10. Proposed Depth 6231'		11. Formation GLORIETA/PADDOCK			
12. Rotary or C.T. ROTARY					
13. Elevations (Show whether DF, RT, GR, etc.) GR-3999'		14. Kind & Status Plug Bond BLANKET			
15. Drilling Contractor TMBR/SHARP		16. Approx. Date Work will start FEBRUARY 15, 1993			
17. PROPOSED CASING AND CEMENT PROGRAM					
SIZE OF HOLE	SIZE OF CASING	WEIGHT PER FOOT	SETTING DEPTH	SACKS OF CEMENT	EST. TOP
14 3/4	11 3/4	42#	1550'	840	SURFACE
11	8 5/8	32#	3000'	1000	SURFACE
7 7/8	5 1/2	15.5# & 17#	6231'	1350	SURFACE

CEMENTING PROGRAM:

SURFACE CASING - 560 SX CLASS C w/ 4% GEL & 2% CaCl₂ (13.5ppg, 1.74cf/s, 9.1gw/s). F/B 280 SX CLASS C w/ 2% CaCl₂ (14.8ppg, 1.34cf/s, 6.3gw/s).

INTERMEDIATE CASING - 1st STG: 300 SX 35/65 POZ CLASS H w/ 6% GEL, 5% SLAT, 1/4# FLOCELE (12.8ppg, 1.94cf/s, 10.4gw/s). F/B 200 SACKS CLASS H w/ 2% CaCl₂ (15.6ppg, 1.19cf/s, 5.2gw/s). DV TOOL @ 1580'. 2nd STG: 500 SX CLASS H w/ 2% CaCl₂ (15.6ppg, 1.19cf/s, 5.2gw/s).

PRODUCTION CASING - 1st STG: 350 SX CLASS H (15.6ppg, 1.18cf/s, 5.2gw/s). DV TOOL @ 5000' - 2nd STG: 900 SX 35/65 POZ CLASS H w/ 6% GEL, 5% SALT & 1/4# FLOCELE (12.8ppg, 1.94cf/s, 10.4gw/s). F/B 100 SX CLASS H (15.6ppg, 1.18cf/s, 5.2gw/s).

THERE ARE NO OTHER OPERATORS IN THIS QUARTER QUARTER SECTION.

UNORTHODOX LOCATION - GRANTED UNDER ORDER No. R-9714. LOCATION WAS MOVED BECAUSE OF A PIPELINE. APPROVAL FOR THE AMENDED LOCATION HAS BEEN APPLIED FOR IN SANTA FE. (COPY ATTACHED)

IN ABOVE SPACE DESCRIBE PROPOSED PROGRAM: IF PROPOSAL IS TO DEEPEN OR PLUG BACK, GIVE DATA ON PRESENT PRODUCTIVE ZONE AND PROPOSED NEW PRODUCTIVE ZONE. GIVE BLOWOUT PREVENTER PROGRAM, IF ANY.

I hereby certify that the information above is true and complete to the best of my knowledge and belief.

SIGNATURE C. P. Basham / cwb TITLE DRILLING OPERATIONS MANAGER DATE 01-14-93

TYPE OR PRINT NAME C. P. BASHAM

TELEPHONE NO. (915) 688-4620

(This space for State Use)

ORIGINAL SIGNED BY JERRY SEXTON
DISTRICT SUPERVISOR

FEB 05 1993

APPROVED BY _____ TITLE _____ DATE _____

CONDITIONS OF APPROVAL, IF ANY:

Permit Expires 6 Months From Approval
Date Unless Drilling Underway.

R-9714 as amended NSL

RECEIVED

APR 12 1966

U.S. DEPARTMENT OF AGRICULTURE

UNITED STATES DEPARTMENT OF AGRICULTURE
WASHINGTON, D. C. 20250

Submit to Appropriate
District Office
State Lease - 4 copies
Fee Lease - 3 copies

State of New Mexico
Energy, Minerals and Natural Resources Dep. ent

Form C-102
Revised 1-1-89

OIL CONSERVATION DIVISION

P.O. Box 2088

Santa Fe, New Mexico 87504-2088

DISTRICT I

P.O. Box 1980, Hobbs, NM 88240

DISTRICT II

P.O. Drawer DD, Artesia, NM 88210

DISTRICT III

1000 Rio Brazos Rd., Aztec, NM 87410

WELL LOCATION AND ACREAGE DEDICATION PLAT

All Distances must be from the outer boundaries of the section

Operator TEXACO EXPL. AND PROD. Inc.			Lease VACUUM GLORIETA WEST UNIT		Well No. 105
Unit Letter N	Section 36	Township 17-South	Range 34-East	County Lea	
Actual Footage Location of Well: 453 feet from the South line and 1340 feet from the West line					
Ground level Elev. 3999	Producing Formation Glorieta; Paddock		Pool Vacuum Glorieta Pool	Dedicated Acreage: 40 Acres	

1. Outline the acreage dedicated to the subject well by colored pencil or hatchure marks on the plat below.

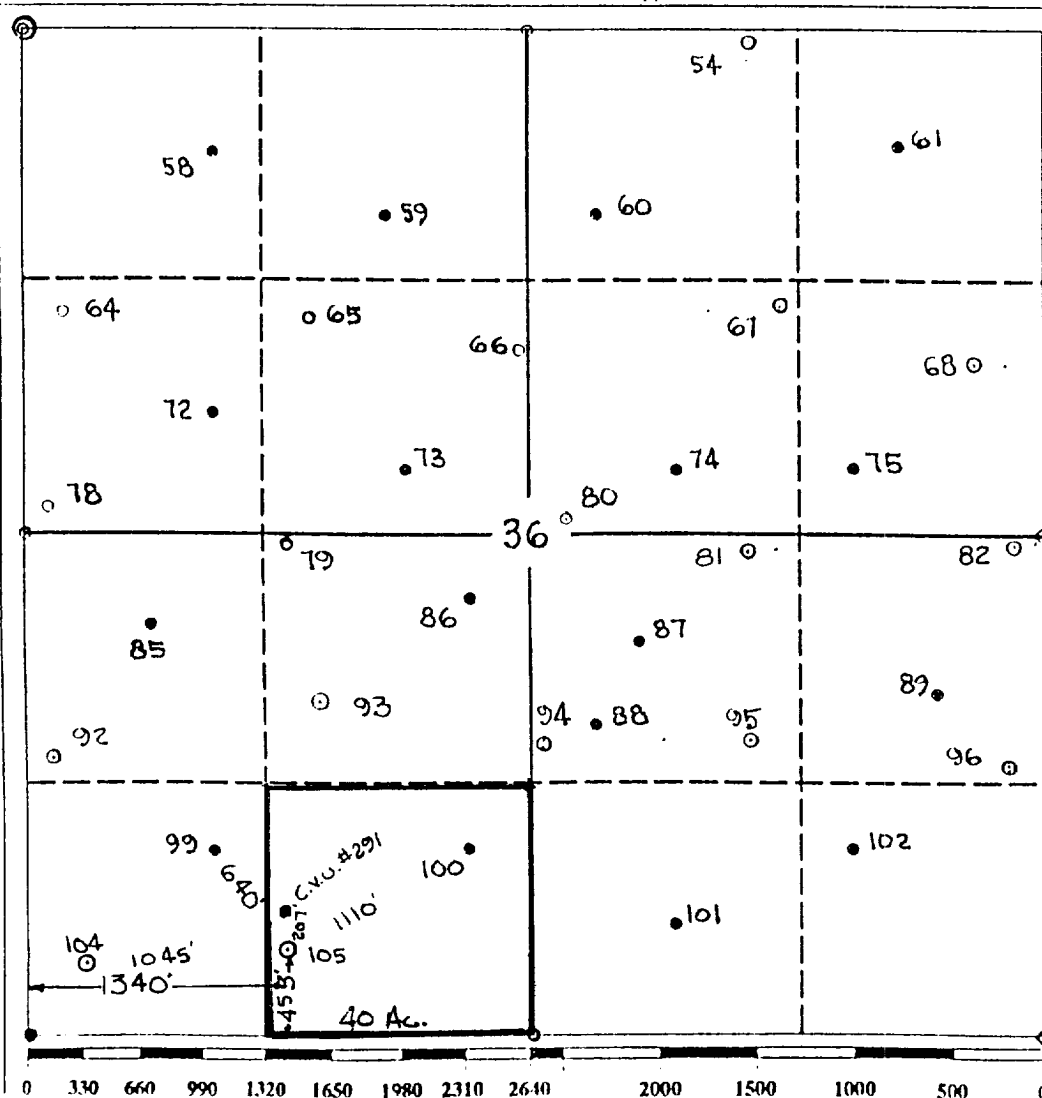
2. If more than one lease is dedicated to the well, outline each and identify the ownership thereof (both as to working interest and royalty).

3. If more than one lease of different ownership is dedicated to the well, have the interest of all owners been consolidated by communitization, unitization, force-pooling, etc.?

☒ Yes ☐ No If answer is "yes" type of consolidation Unitization

If answer is "no" list the owners and tract descriptions which have actually been consolidated. (Use reverse side of this form if necessary.)

No allowable will be assigned to the well until all interests have been consolidated (by communitization, unitization, forced-pooling, or otherwise) or until a non-standard unit, eliminating such interest, has been approved by the Division.



OPERATOR CERTIFICATION

I hereby certify that the information contained herein is true and complete to the best of my knowledge and belief.

Signature

Royce D. Mariott

Printed Name

Royce D. Mariott

Position

Division Surveyor

Company

Texaco Expl. & Prod.

Date

January 7, 1993

SURVEYOR CERTIFICATION

I hereby certify that the well location shown on this plat was plotted from field notes of actual surveys made by me or under my supervision, and that the same is true and correct to the best of my knowledge and belief.

Date Surveyed

December 17, 1992

Signature & Seal of
Professional Surveyor

John S. Piper

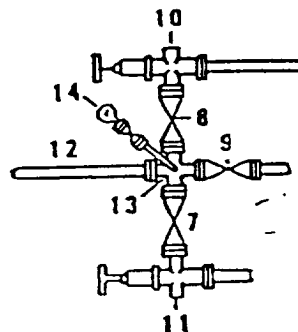
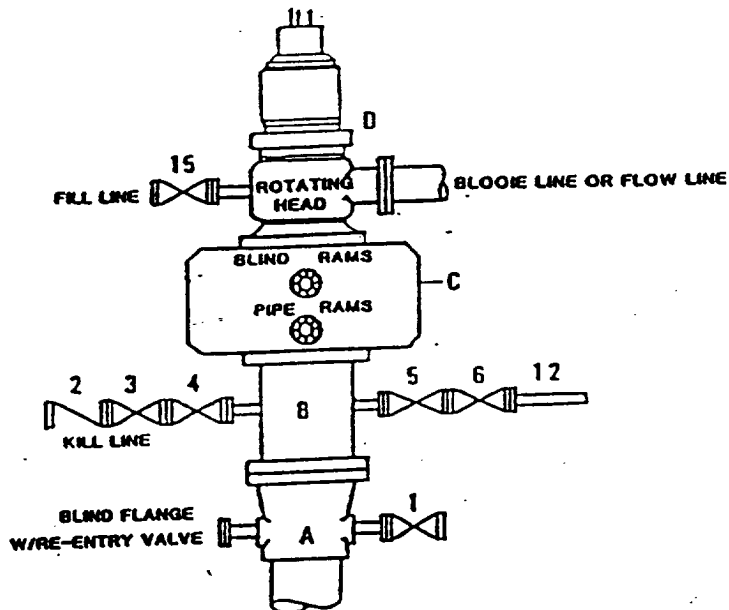
Certificate No.

7254 John S. Piper

Lea Co. FB. 7, Pg. 47

**DRILLING CONTROL
CONDITION II-B 3000 WP
FOR AIR DRILLING OR
WHERE NITROGEN OR AIR BLOWS ARE EXPECTED**

H₂S TRIM REQUIRED
YES ☒ NO ☐



DRILLING CONTROL

MATERIAL LIST - CONDITION II - B

- A Texaco Wellhead
- B 3000# W.P. drilling spool with a 2" minimum flanged outlet for kill line and 3" minimum flanged outlet for choke line.
- C 3000# W.P. Dual ram type preventer, hydraulic operated with 1" steel, 3000# W.P. control lines (where sub-structure height is adequate, 2 - 3000# W.P. single ram type preventers may be utilized).
- D Rotating Head with fill up outlet and extended Blooe Line.
- 1,3,4, 2" minimum 3000# W.P. flanged full opening steel gate valve, or Halliburton Lo Torc Plug valve.
- 7,8,
- 2 2" minimum 3000# W.P. back pressure valve.
- 5,6,9 1" minimum 3000# W.P. flanged full opening steel gate valve, or Halliburton Lo Torc Plug valve.
- 12 1" minimum schedule 80, Grade "B", seamless line pipe.
- 13 2" minimum x 1" minimum 3000# W.P. flanged cross.
- 10,11 2" minimum 3000# W.P. adjustable choke bodies.
- 14 Cameron Mud Gauge or equivalent (location optional in choke line).
- 15 2" minimum 3000# W.P. flanged or threaded full opening steel gate valve, or Halliburton Lo Torc Plug valve.



TEXACO, INC.
HOUSTON, TEXAS
HOUSTON, TEXAS



SCALE	DATE	EST. NO.	ORD. NO.
DRAWN BY			
CHECKED BY			

EXHIBIT C



Texaco USA
Producing Department
Midland Division

PO Box 3109
Midland TX 79702-3109

January 13, 1993

GOV - STATE AND LOCAL GOVERNMENTS

Unorthodox Locations

Vacuum Glorieta West Unit

Well Nos. 27, 50, 63, 77, 91, 105,
106, 108, 121, 122, 123, and 124

Lea County, New Mexico

State of New Mexico

Energy and Minerals Department

Oil Conservation Division

P. O. Box 2088

Santa Fe, New Mexico 87501-2088

Attention: Mr. Michael E. Stogner

Gentlemen:

Texaco Exploration and Production Inc. respectfully submits, for administrative approval, amended drilling locations for the captioned injection wells under Order No. R-9714.

Well Nos. 27, 50, 91, 105, 106, 108, 121, 122, and 123 were moved because of pipelines. Well Nos. 63 and 124 were moved because of electric lines. Well No. 77 was moved to clear Phillip's M. E. Hale Well No. 16.

Attached are Forms C-102 and a "detail" drawing showing the amended locations for each well.

Yours very truly,

C. P. Basham /cwh

C. P. Basham
Drilling Operations Manager

CWH:

cc:NMOCD, P. O. Box 1980, Hobbs, NM 88240

PIPER SURVEYING COMPANY

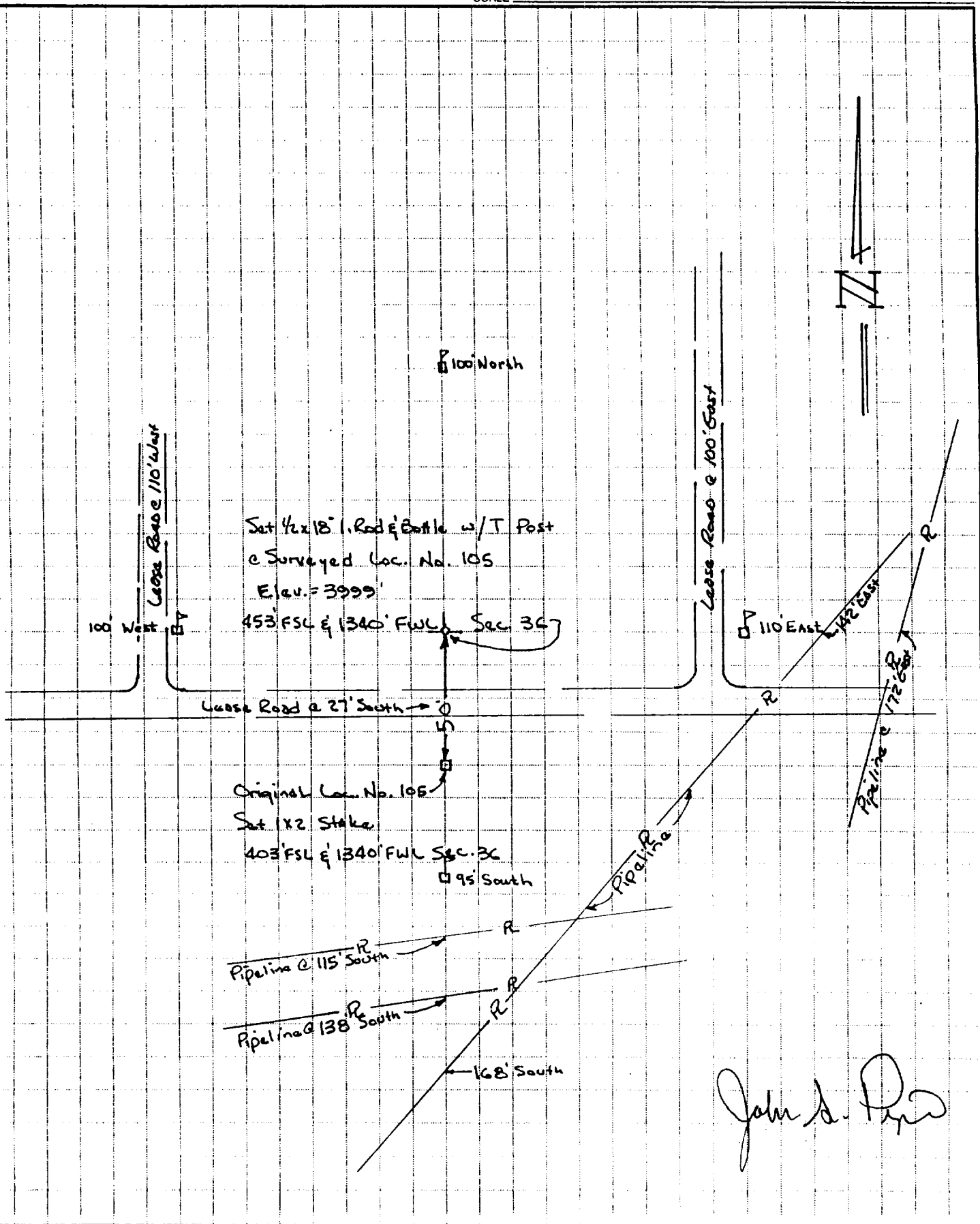
P.O. Box 60432
 MIDLAND, TEXAS 79711
 (915) 550-7810

SHEET NO. 1 OF 1

CALCULATED BY Dow E Kelly DATE 01/07/93

CHECKED BY J. Stan Piper DATE 01/07/93

SCALE 1"=50'



70485-6-93

ELF

RECEIVED

JAN 10 1993

OCD HOEBS OFFICE