

Submit to Appropriate
District Office
State Lease - 6 copies
Fee Lease - 5 copies

State of New Mexico
Energy, Minerals and Natural Resources Department

Form C-101
Revised 1-1-89

DISTRICT I
P.O. Box 1980, Hobbs, NM 88240

DISTRICT II
P.O. Drawer DD, Artesia, NM 88210

DISTRICT III
1000 Rio Brazos Rd., Aztec, NM 87410

OIL CONSERVATION DIVISION
P.O. Box 2088
Santa Fe, New Mexico 87504-2088

API NO. (assigned by OCD on New Wells)
30-025-31884

5. Indicate Type of Lease
STATE ☒ FEE ☐

6. State Oil & Gas Lease No.
B-155-6

APPLICATION FOR PERMIT TO DRILL, DEEPEN, OR PLUG BACK

1a. Type of Work:

DRILL ☒ RE-ENTER ☐ DEEPEN ☐ PLUG BACK ☐

b. Type of Well:

OIL WELL ☐ GAS WELL ☐ OTHER WATER INJECTION ☐ SINGLE ZONE ☒ MULTIPLE ZONE ☐

2. Name of Operator
TEXACO EXPLORATION AND PRODUCTION INC.

7. Lease Name or Unit Agreement Name

VACUUM GLORIETA WEST UNIT

3. Address of Operator
P. O. Box 3109, Midland, Texas 79702

8. Well No.
107

9. Pool name or Wildcat
VACUUM GLORIETA

4. Well Location
Unit Letter P : 183 Feet From The SOUTH Line and 931 Feet From The EAST Line
Section 36 Township 17-SOUTH Range 34-EAST NMPM LEA County

10. Proposed Depth
6308'
11. Formation
GLORIETA/PADDOCK
12. Rotary or C.T.
ROTARY

13. Elevations (Show whether DF, RT, GR, etc.)
GR-3998'
14. Kind & Status Plug. Bond
BLANKET
15. Drilling Contractor
TMBR/SHARP
16. Approx. Date Work will start
FEBRUARY 28, 1993

17. PROPOSED CASING AND CEMENT PROGRAM

SIZE OF HOLE	SIZE OF CASING	WEIGHT PER FOOT	SETTING DEPTH	SACKS OF CEMENT	EST. TOP
14 3/4	11 3/4	42#	1470'	840	SURFACE
11	8 5/8	32#	3000'	1000	SURFACE
7 7/8	5 1/2	15.5# & 17#	6308'	1350	SURFACE

CEMENTING PROGRAM:

SURFACE CASING - 560 SX CLASS C w/ 4% GEL & 2% CaCl₂ (13.5ppg, 1.74cf/s, 9.1gw/s). F/B 280 SX CLASS C w/ 2% CaCl₂ (14.8ppg, 1.34cf/s, 6.3gw/s).

INTERMEDIATE CASING - 1st STG: 300 SX 35/65 POZ CLASS H w/ 6% GEL, 5% SLAT, 1/4# FLOCELE (12.8ppg, 1.94cf/s, 10.4gw/s). F/B 200 SACKS CLASS H w/ 2% CaCl₂ (15.6ppg, 1.19cf/s, 5.2gw/s). DV TOOL @ 1580'. 2nd STG: 500 SX CLASS H w/ 2% CaCl₂ (15.6ppg, 1.19cf/s, 5.2gw/s).

PRODUCTION CASING - 1st STG: 350 SX CLASS H (15.6ppg, 1.18cf/s, 5.2gw/s).

DV TOOL @ 5000' - 2nd STG: 900 SX 35/65 POZ CLASS H w/ 6% GEL, 5% SALT & 1/4# FLOCELE (12.8ppg, 1.94cf/s, 10.4gw/s). F/B 100 SX CLASS H (15.6ppg, 1.18cf/s, 5.2gw/s).

THERE ARE NO OTHER OPERATORS IN THIS QUARTER QUARTER SECTION.

UNORTHODOX LOCATION - GRANTED UNDER ORDER No. R-9714. NOTE: THIS WELL WILL BE DIRECTIONAL DRILLED TO A POINT 184' FSL, 1382' FEL, SEC. 36. APPROVAL HAS BEEN APPLIED FOR IN SANTA FE. (COPY ATTACHED)

IN ABOVE SPACE DESCRIBE PROPOSED PROGRAM: IF PROPOSAL IS TO DEEPEN OR PLUG BACK, GIVE DATA ON PRESENT PRODUCTIVE ZONE AND PROPOSED NEW PRODUCTIVE ZONE. GIVE BLOWOUT PREVENTER PROGRAM, IF ANY.

I hereby certify that the information above is true and complete to the best of my knowledge and belief.

SIGNATURE C. P. Basham/cwt TITLE DRILLING OPERATIONS MANAGER DATE 01-19-93
TYPE OR PRINT NAME C. P. BASHAM TELEPHONE NO. (915) 688-4621

(This space for State Use)

ORIGINAL SIGNED BY JERRY SEXTON
DISTRICT I SUPERVISOR

MAR 30 1993

APPROVED BY _____ TITLE _____ DATE _____

CONDITIONS OF APPROVAL, IF ANY:

Permit Expires 6 Months From Approval
Date Unless Drilling Underway.

R-9714 + DB-78 (NSBHL)

Submit to Appropriate
District Office
State Lease - 4 copies
Fee Lease - 3 copies

State of New Mexico
Energy, Minerals and Natural Resources Department

Form C-102
Revised 1-1-89

OIL CONSERVATION DIVISION

P.O. Box 2088

Santa Fe, New Mexico 87504-2088

DISTRICT I

P.O. Box 1980, Hobbs, NM 88240

DISTRICT II

P.O. Drawer DD, Artesia, NM 88210

DISTRICT III

1000 Rio Brazos Rd., Aztec, NM 87410

WELL LOCATION AND ACREAGE DEDICATION PLAT

All Distances must be from the outer boundaries of the section

Operator TEXACO EXPL. AND PROD. Inc.			Lease VACUUM GLORIETA WEST UNIT		Well No. 107
Unit Letter P	Section 36	Township 17-South	Range 34-East	County Lea	

Actual Footage Location of Well:

183 feet from the South line and	931 feet from the East line		
Ground level Elev. 3988	Producing Formation Glorieta; Paddock	Pool Vacuum Glorieta Pool	Dedicated Acreage: 40 Acres

1. Outline the acreage dedicated to the subject well by colored pencil or hatchure marks on the plat below.

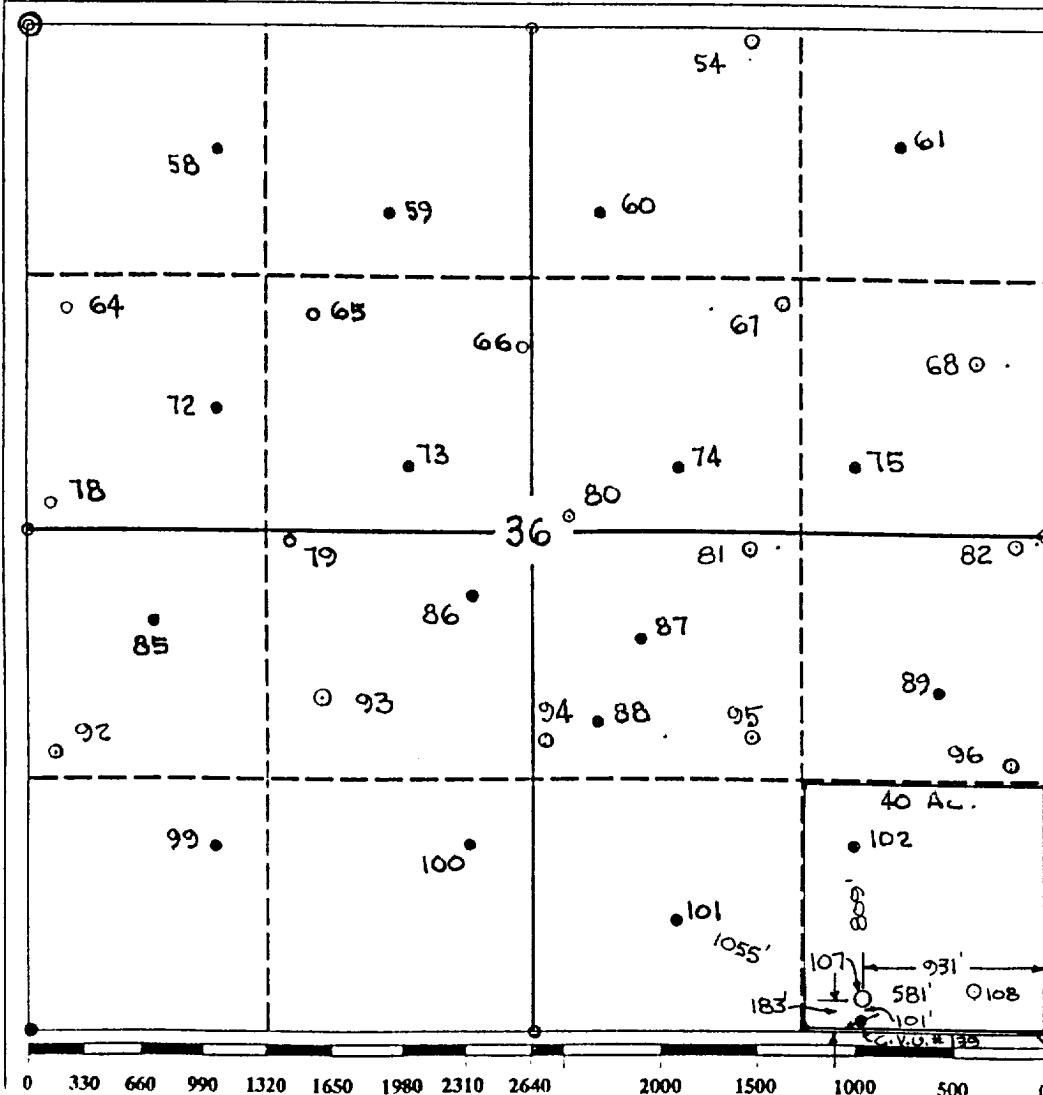
2. If more than one lease is dedicated to the well, outline each and identify the ownership thereof (both as to working interest and royalty).

3. If more than one lease of different ownership is dedicated to the well, have the interest of all owners been consolidated by communitization, unitization, force-pooling, etc.?

☒ Yes ☐ No If answer is "yes" type of consolidation Unitization

If answer is "no" list the owners and tract descriptions which have actually been consolidated. (Use reverse side of this form if necessary.)

No allowable will be assigned to the well until all interests have been consolidated (by communitization, unitization, forced-pooling, or otherwise) or until a non-standard unit, eliminating such interest, has been approved by the Division.



OPERATOR CERTIFICATION

I hereby certify that the information contained herein is true and complete to the best of my knowledge and belief.

Signature
Royce D. Mariott
Printed Name
Royce D. Mariott
Position
Division Surveyor
Company
Texaco Expl. & Prod.
Date
January 7, 1993

SURVEYOR CERTIFICATION

I hereby certify that the well location shown on this plat was plotted from field notes of actual surveys made by me or under my supervision, and that the same is true and correct to the best of my knowledge and belief.

Date Surveyed
January 5, 1993
Signature & Seal of
Professional Surveyor

John S. Piper
Certificate No.
7254 John S. Piper

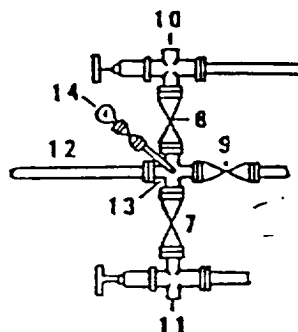
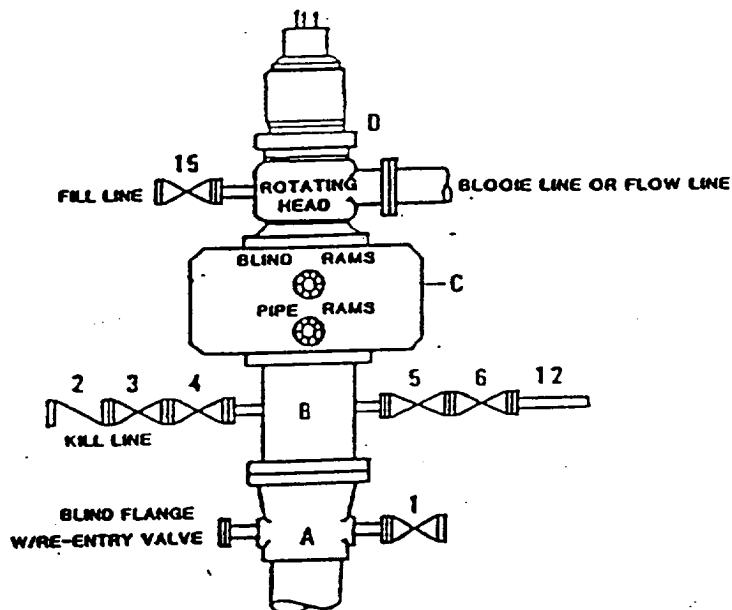
Lea Co. FB. 7, Pg. 49

"SURFACE LOCATION"

Bottom-Hole Location

**DRILLING CONTROL
CONDITION II-B 3000 WP
FOR AIR DRILLING OR
WHERE NITROGEN OR AIR BLOWS ARE EXPECTED**

H₂S TRIM REQUIRED
YES ☒ NO ☐



DRILLING CONTROL

MATERIAL LIST - CONDITION II - B

- A Texaco Wellhead
- B 3000# W.P. drilling spool with a 2" minimum flanged outlet for kill line and 3" minimum flanged outlet for choke line.
- C 3000# W.P. Dual ram type preventer, hydraulic operated with 1" steel, 3000# W.P. control lines (where sub-structure height is adequate, 2 - 3000# W.P. single ram type preventers may be utilized).
- D Rotating Head with fill up outlet and extended Bloose Line.
- 1,3,4, 2" minimum 3000# W.P. flanged full opening steel gate valve, or Halliburton Lo Torc Plug Valve.
- 7,8,
- 2 2" minimum 3000# W.P. back pressure valve.
- 5,6,9 3" minimum 3000# W.P. flanged full opening steel gate valve, or Halliburton Lo Torc Plug Valve.
- 12 1" minimum schedule 80, Grade "B", seamless line pipe.
- 13 2" minimum x 3" minimum 3000# W.P. flanged cross.
- 10,11 2" minimum 3000# W.P. adjustable choke bodies.
- 14 Cameron Mud Gauge or equivalent (location optional in choke line).
- 15 2" minimum 3000# W.P. flanged or threaded full opening steel gate valve, or Halliburton Lo Torc Plug Valve.



TEXACO
MIDLAND OFFICE
MIDLAND, TEXAS



SCALE	DATE	EST. NO.	CRG. NO.
DRAWN BY			
CHECKED BY			

EXHIBIT C



Texaco USA
Producing Department
Midland Division

PO Box 3109
Midland TX 79702-3109

January 19, 1993

GOV - STATE AND LOCAL GOVERNMENTS

Unorthodox Location
Directional Drilling
Vacuum Glorieta West Unit
Well No. 107
Division Order No. R-9714
Lea County, New Mexico

State of New Mexico
Energy and Minerals Department
Oil Conservation Division
P. O. Box 2088
Santa Fe, New Mexico 87501-2088

Attention: Mr. Michael E. Stogner

Gentlemen:

Texaco requests administrative approval to directionally drill the captioned well. We plan to intentionally deviate this well from vertical because the original surface location (approved in Order No. R-9714) is not a satisfactory drill site because of an existing Gas Plant.

We plan to use a "Monel" drill collar and run magnetic single-shot surveys during the course of drilling the well to insure proper direction is maintained. We request a waiver to Rule 111(b) requiring the OCD be notified each time a directional survey is run, since multiple surveys will be run each day during the drilling of the well.

SURFACE LOCATION: 183' FSL & 931' FEL, SEC. 36, T-17-S, R-34-E.

PROPOSED BOTTOM-HOLE LOCATION: 184' FSL & 1382' FEL, SEC. 36, T-17-S, R-34-E. (Original location approved in Order No. R-9714.)

Attached is Form C-102, showing the surface location and the proposed bottom-hole location with a 150' radius target, and a "detail" drawing showing the location and surface obstructions.

Yours very truly,

C.P. Basham /cwh

C. P. Basham
Drilling Operations Manager

CWH:

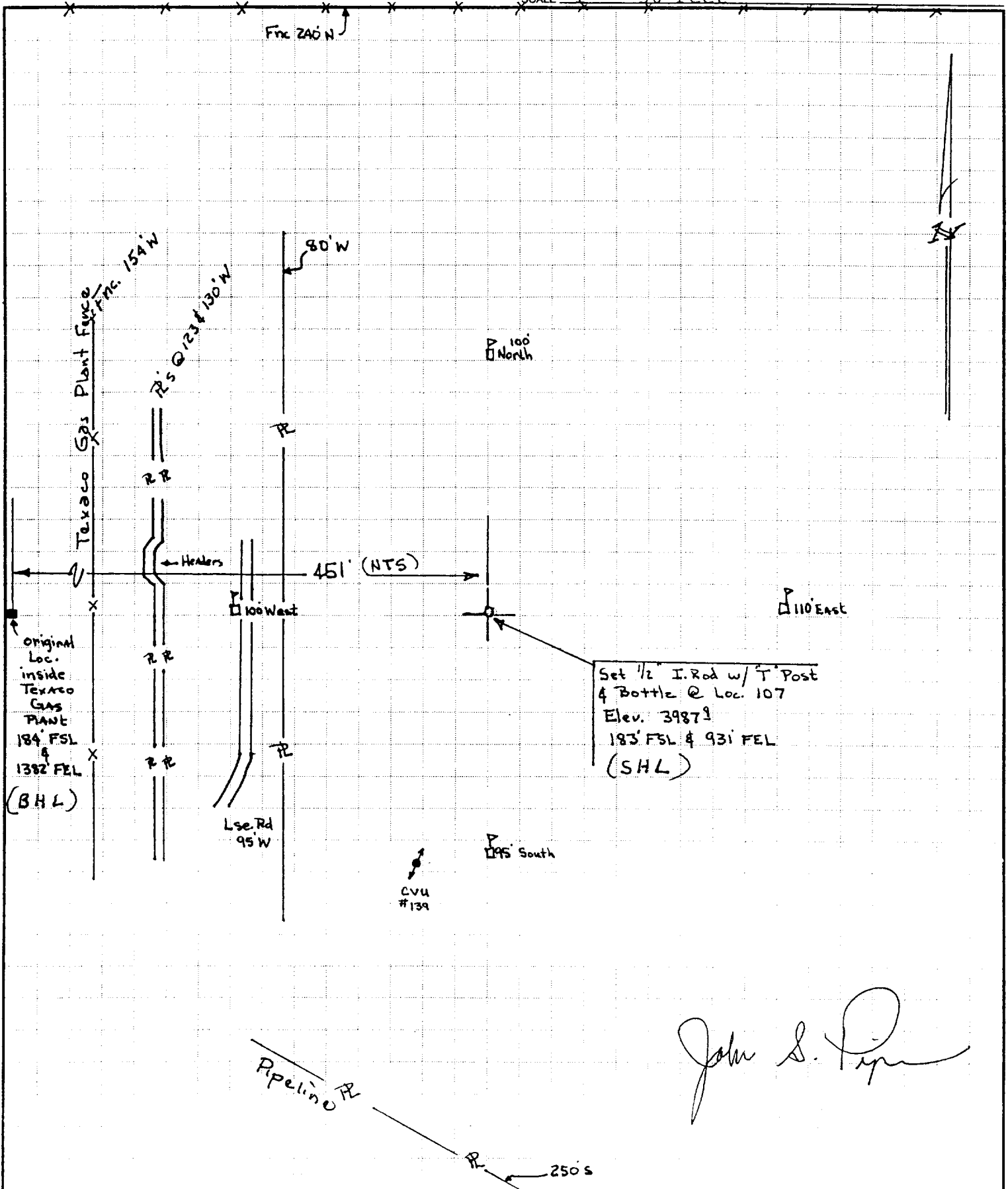
cc: NMOCD, P. O. Box 1980, Hobbs, NM 88240

PIPER SURVEYING COMPANY

P.O. Box 60432
MIDLAND, TEXAS 79711
(915) 550-7810

SHEET NO. 1 OF 1
Surveyed By O. Flores DATE 1/12/93
CHECKED BY J.S. Piper DATE 1/13/93

SCALE 1" = 50 Feet



John S. Piper