

# OIL CONSERVATION DIVISION

P.O. Box 2088

Santa Fe, New Mexico 87504-2088

## DISTRICT I

P.O. Box 1980, Hobbs, NM 88240

## DISTRICT II

P.O. Drawer DD, Artesia, NM 88210

## DISTRICT III

1000 Rio Brazos Rd., Artesia, NM 87410

## WELL LOCATION AND ACREAGE DEDICATION PLAT

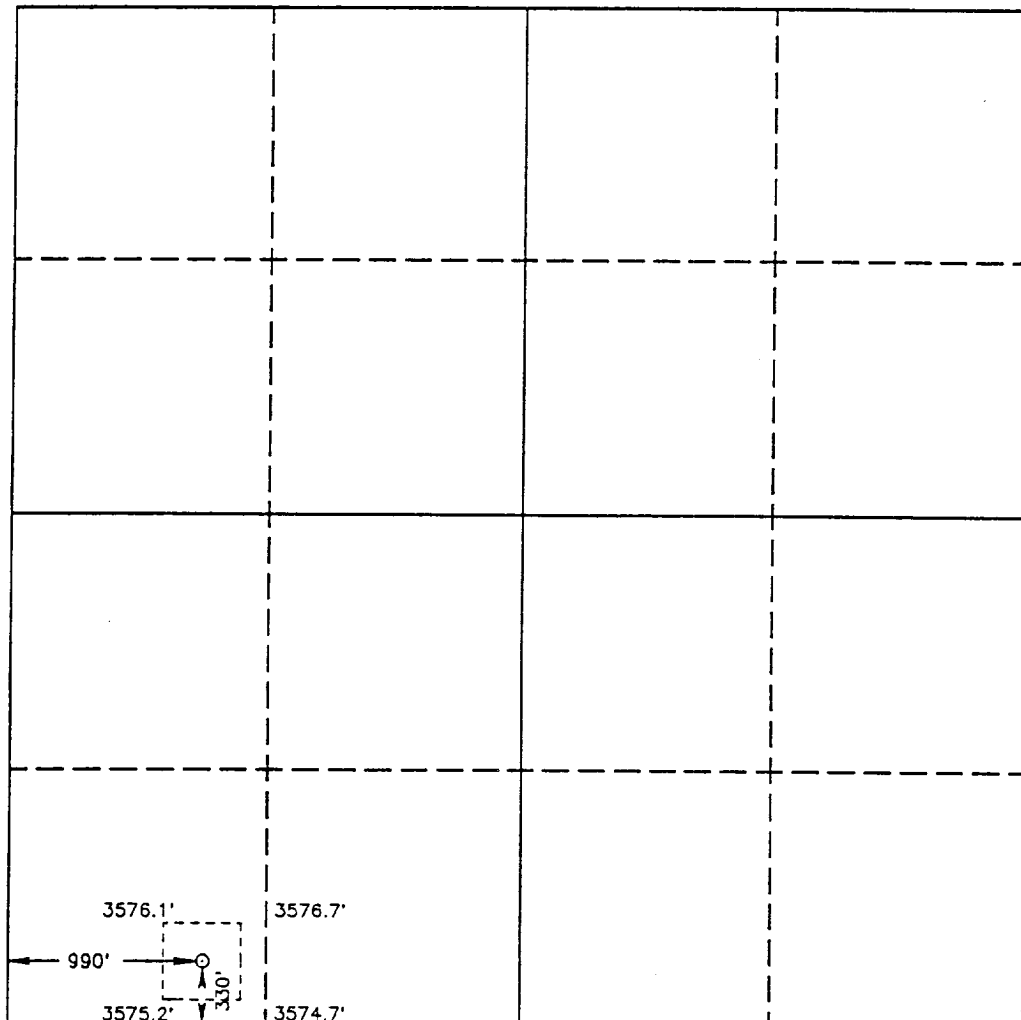
All Distances must be from the outer boundaries of the section

Operator KAISER-FRANCIS OIL COMPANY			Lease CRAZY HORSE 30		Well No. 2
Unit Letter M	Section 30	Township 19 SOUTH	Range 33 EAST	NMPM	County LEA
Actual Footage Location of Well: 330 feet from the SOUTH line and 990 feet from the WEST line					
Ground Level Elev. 3575.1'	Producing Formation Delaware		Pool Geronimo-Delaware		Dedicated Acreage: 40 Acres

1. Outline the acreage dedicated to the subject well by colored pencil or hatchure marks on the plat below.
2. If more than one lease is dedicated to the well, outline each and identify the ownership thereof (both as to working interest and royalty).
3. If more than one lease of different ownership is dedicated to the well, have the interest of all owners been consolidated by communitization, unitization, force-pooling, etc.?  
☐ Yes ☐ No If answer is "yes" type of consolidation \_\_\_\_\_

If answer is "no" list of owners and tract descriptions which have actually been consolidated. (Use reverse side of this form necessary.) \_\_\_\_\_

No allowable will be assigned to the well unit all interests have been consolidated (by communitization, unitization, forced-pooling, otherwise) or until a non-standard unit, eliminating such interest, has been approved by the Division.



### OPERATOR CERTIFICATION

I hereby certify the the information contained herein is true and complete to the best of my knowledge and belief.

Signature  
*Milton Griffin*  
Printed Name  
Milton Griffin  
Position  
Operations Engineer  
Company  
Kaiser-Francis Oil Co.  
Date  
11-13-92

### SURVEYOR CERTIFICATION

I hereby certify that the well location shown on this plat was plotted from field notes of actual surveys made by me or under my supervision, and that the same is true and correct to the best of my knowledge and belief.

Date Surveyed  
AUGUST 10, 1992

Signature & Seal of Professional Surveyor  
*Ronald L. Eidson*  
No. 3239  
Certificate No. JOHN W. WEST, 876  
RONALD L. EIDSON, 3239  
GARY L. JONES, 7977

92-11-1142