

Submit to Appropriate
District Office
State Lease - 4 copies
Fee Lease - 3 copies

State of New Mexico
Energy, Minerals and Natural Resources Department

Form C-102
Revised 1-1-89

OIL CONSERVATION DIVISION

P.O. Box 2088
Santa Fe, New Mexico 87504-2088

DISTRICT I

P.O. Box 1980, Hobbs, NM 88240

DISTRICT II

P.O. Drawer DD, Artesia, NM 88210

DISTRICT III

1000 Rio Brazos Rd., Aztec, NM 87410

WELL LOCATION AND ACREAGE DEDICATION PLAT

All Distances must be from the outer boundaries of the section

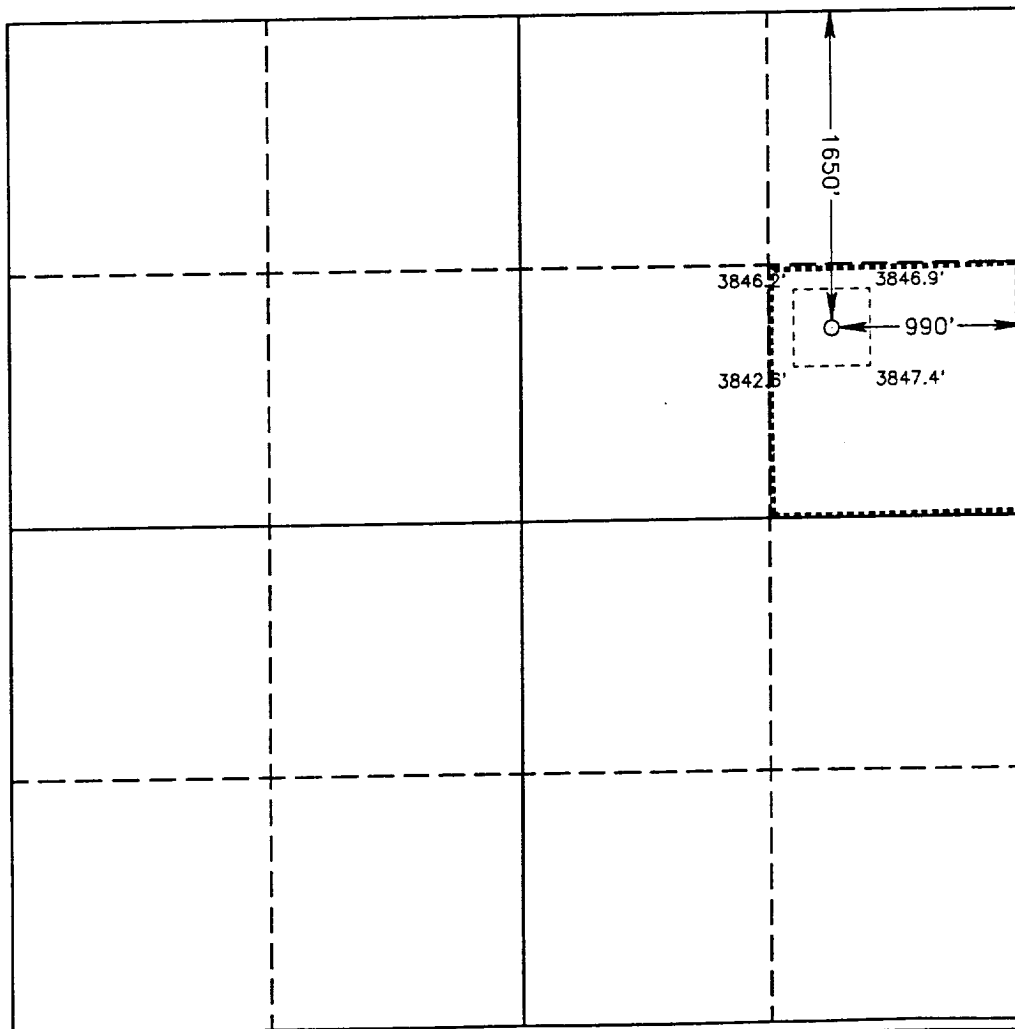
Operator MARALO INC.			Lease UNCLE SAM FEDERAL		Well No. 1
Unit Letter H	Section 13	Township 18 SOUTH	Range 32 EAST	NMPM	County LEA
Actual Footage Location of Well: 1650 feet from the NORTH line and 990 feet from the EAST line					
Ground Level Elev. 3844.0'	Producing Formation Delaware	Pool Corbin West		Dedicated Acreage: 40 Acres	

1. Outline the acreage dedicated to the subject well by colored pencil or hachure marks on the plat below.
2. If more than one lease is dedicated to the well, outline each and identify the ownership thereof (both as to working interest and royalty).
3. If more than one lease of different ownership is dedicated to the well, have the interest of all owners been consolidated by communitization, unitization, force-pooling, etc.?

☐ Yes ☒ No If answer is "yes" type of consolidation _____

If answer is "no" list of owners and tract descriptions which have actually been consolidated. (Use reverse side of this form necessary. _____)

No allowable will be assigned to the well unit all interests have been consolidated (by communitization, unitization, forced-pooling, otherwise) or until a non-standard unit, eliminating such interest, has been approved by the Division.



OPERATOR CERTIFICATION

I hereby certify that the information contained herein is true and complete to the best of my knowledge and belief.

Signature _____

Printed Name
Joe T. Janica

Position
Agent for Maralo
Company
Maralo

Date
5-7-93

SURVEYOR CERTIFICATION

I hereby certify that the well location shown on this plat was plotted from field notes of actual surveys made by me or under my supervision, and that the same is true and correct to the best of my knowledge and belief.

Date Surveyed
APRIL 22, 1993

Signature & Seal of
Professional Surveyor

Certification No. _____
JOHN W. WEST, 676
RONALD J. EIDSON, 3239
GARY L. JONES, 7977
95-11-0630

RECEIVED

JUN 28 1993

J. HUBBS
OFFICE