

OIL CONSERVATION DIVISION

P.O. Box 2088
Santa Fe, New Mexico 87504-2088

DISTRICT I

P.O. Box 1980, Hobbs, NM 88240

DISTRICT II

P.O. Drawer DD, Artesia, NM 88210

DISTRICT III

1000 Rio Brazos Rd., Aztec, NM 87410

WELL LOCATION AND ACREAGE DEDICATION PLAT

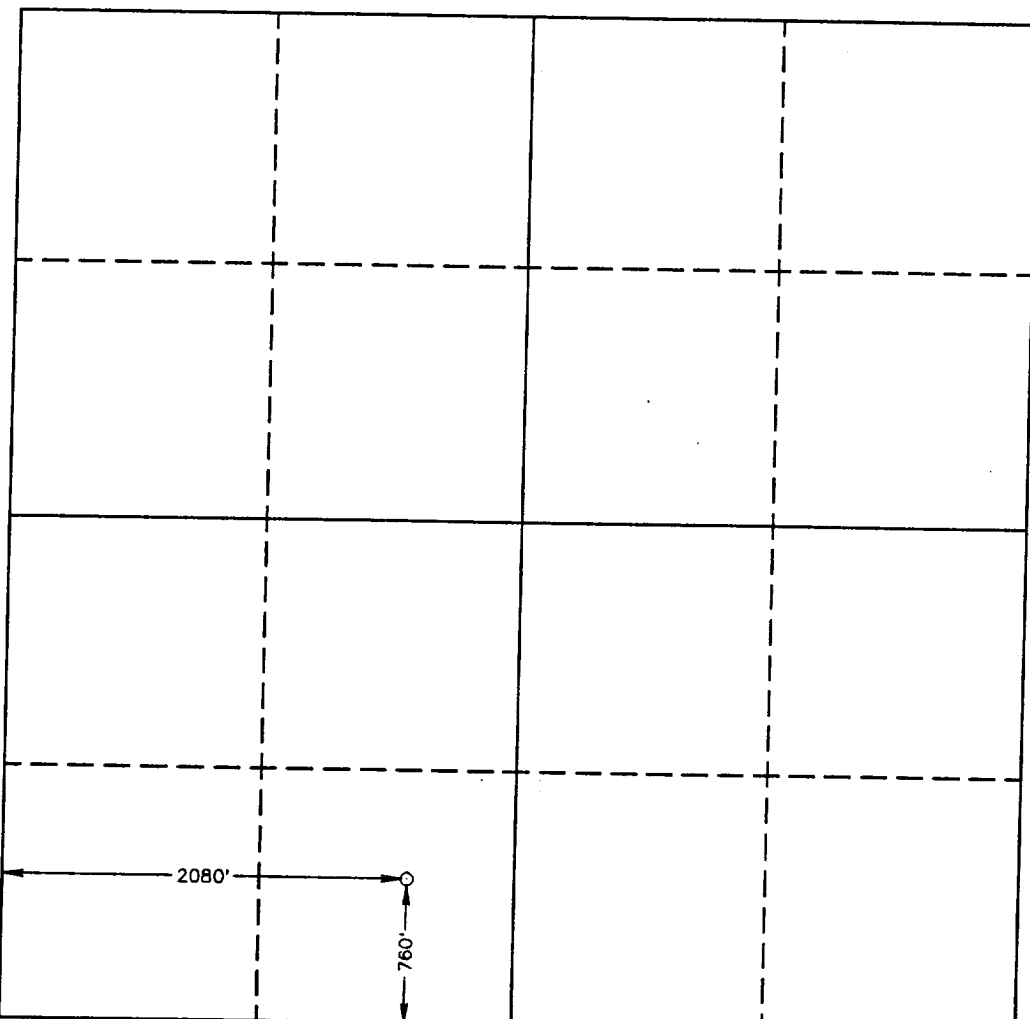
All Distances must be from the outer boundaries of the section

| | | | | | |
|---|--|-----------------------------|---------------------------------|------|---------------------------------------|
| Operator AMTEX ENERGY INC. | | | Lease RECORD | | Well No. 4 |
| Unit Letter N | Section 26 | Township 19 SOUTH | Range 35 EAST | NMPM | County LEA |
| Actual Footage Location of Well: 760 feet from the SOUTH line and 2080 feet from the WEST line | | | | | |
| Ground Level Elev. 3699.0' | Producing Formation San Andres | | Pool Pearl-San Andres | | Dedicated Acreage: 40 Acres |

1. Outline the acreage dedicated to the subject well by colored pencil or hatchure marks on the plat below.
2. If more than one lease is dedicated to the well, outline each and identify the ownership thereof (both as to working interest and royalty).
3. If more than one lease of different ownership is dedicated to the well, have the interest of all owners been consolidated by communitization, unitization, force-pooling, etc.?
☐ Yes ☐ No If answer is "yes" type of consolidation _____

If answer is "no" list of owners and tract descriptions which have actually been consolidated. (Use reverse side of this form necessary.)

No allowable will be assigned to the well unit all interests have been consolidated (by communitization, unitization, forced-pooling, otherwise) or until a non-standard unit, eliminating such interest, has been approved by the Division.



OPERATOR CERTIFICATION

I hereby certify the the information contained herein is true and complete to the best of my knowledge and belief.

Signature

William J. Savage
Printed Name
William J. Savage

Position

President

Company

Amtex Energy, Inc.

Date

8/19/93

SURVEYOR CERTIFICATION

I hereby certify that the well location shown on this plat was plotted from field notes of actual surveys made by me or under my supervision, and that the same is true and correct to the best of my knowledge and belief.

Date Surveyed

APRIL 4, 1993

Signature & Seal of
Professional Surveyor



Certificate No. _____ WEST, 676

RONALD J. EIDSON, 3239

GARY L. JONES, 7977

93-11-0560