

UNITED STATES
DEPARTMENT OF THE INTERIOR
BUREAU OF LAND MANAGEMENT

N.M. OIL CONS. COMMISSION
P.O. BOX 1980
HOBBS, NEW MEXICO 88240

Approved
Budget Bureau No. 1004-0136
Expires: December 31, 1991

APPLICATION FOR PERMIT TO DRILL OR DEEPEN

1a. TYPE OF WORK

DRILL ☒

DEEPEN ☐

b. TYPE OF WELL

OIL
WELL ☒

GAS
WELL ☐

OTHER ☐

SINGLE
ZONE ☐

MULTIPLE
ZONE ☐

2. NAME OF OPERATOR

MARALO, INC.

3. ADDRESS AND TELEPHONE NO.

P.O. Box 832, Midland, Tx. 79702 (915) 684-7441

4. LOCATION OF WELL (Report location clearly and in accordance with any State requirements.)

At surface

1650' FSL & 1650' FEL Sec. 13

At proposed prod. zone
same

14. DISTANCE IN MILES AND DIRECTION FROM NEAREST TOWN OR POST OFFICE*

8 mi. South, Southeast, Maljamar, New Mexico

15. DISTANCE FROM PROPOSED*

LOCATION TO NEAREST
PROPERTY OR LEASE LINE, FT.
(Also to nearest drig. unit line, if any)

330'

16. NO. OF ACRES IN LEASE

160

17. NO. OF ACRES ASSIGNED
TO THIS WELL

40

15. DISTANCE FROM PROPOSED LOCATION*

TO NEAREST WELL, DRILLING, COMPLETED,
OR APPLIED FOR, ON THIS LEASE, FT.

990'

19. PROPOSED DEPTH

5300

20. ROTARY OR CABLE TOOLS

Rotary

21. ELEVATIONS (Show whether DF, RT, GR, etc.)

3827.8

Capitan ~~Basin~~ ~~Basin~~

22. APPROX. DATE WORK WILL START*

9-1-93

23. PROPOSED CASING AND CEMENTING PROGRAM

SIZE OF HOLE	GRADE, SIZE OF CASING	WEIGHT PER FOOT	SETTING DEPTH	QUANTITY OF CEMENT
17-1/2	13-3/8 J-55	54.5	40	cement with redimix to surface
12-1/4	8-5/8 J-55	24	450'	300 sx class C-Circulate to surface
7-7/8	5-1/2 J-55	15.5	5300'	320 sx Halliburton light tail in with 250 sx premium 50/50 poz mix tie back at least 200'

1. Set 40' of 13 3/8" conductor cement to surface with redimix.
2. Drill 12-1/4" hole to 450', run 450' of 8-5/8" J-55 24# casing, cement with 300 sx Class "C" + 1/4# Flocele per sx + 2% CaCl, circulate cement to surface.
3. Drill 7-7/8" hole to 5300', run 5300' of 5-1/2" J-55 LT&C 15.5# cement with 320 sx. Halliburton Light, tail in with 250 sx Premium 50/50 Poz mix, fill up to 200' above top of salt, estimated to be 1400'.

IN ABOVE SPACE DESCRIBE PROPOSED PROGRAM: If proposal is to deepen, give data on present productive zone and proposed new productive zone. If proposal is to drill or deepen directionally, give pertinent data on subsurface locations and measured and true vertical depths. Give blowout preventer program, if any.

24.

SIGNED

[Signature]

TITLE

AGENT

DATE

8/19/93

(This space for Federal or State office use)

PERMIT NO.

APPROVAL DATE

Application approval does not warrant or certify that the applicant holds legal or equitable title to those rights in the subject lease which would entitle the applicant to conduct operations thereon.
CONDITIONS OF APPROVAL, IF ANY:

APPROVED BY

[Signature]

TITLE

AREA MANAGER

DATE

AUG 17 1993

*See Instructions On Reverse Side

RECEIVED

SEP 21 1993

**JOE HOBBS
OFFICE**

Submit to Appropriate
District Office
State Lease - 4 copies
Fee Lease - 3 copies

State of New Mexico
Energy, Minerals and Natural Resources Department

Form C-102
Revised 1-1-89

OIL CONSERVATION DIVISION

P.O. Box 2088

Santa Fe, New Mexico 87504-2088

DISTRICT I

P.O. Box 1980, Hobbs, NM 88240

DISTRICT II

P.O. Drawer DD, Artesia, NM 88210

DISTRICT III

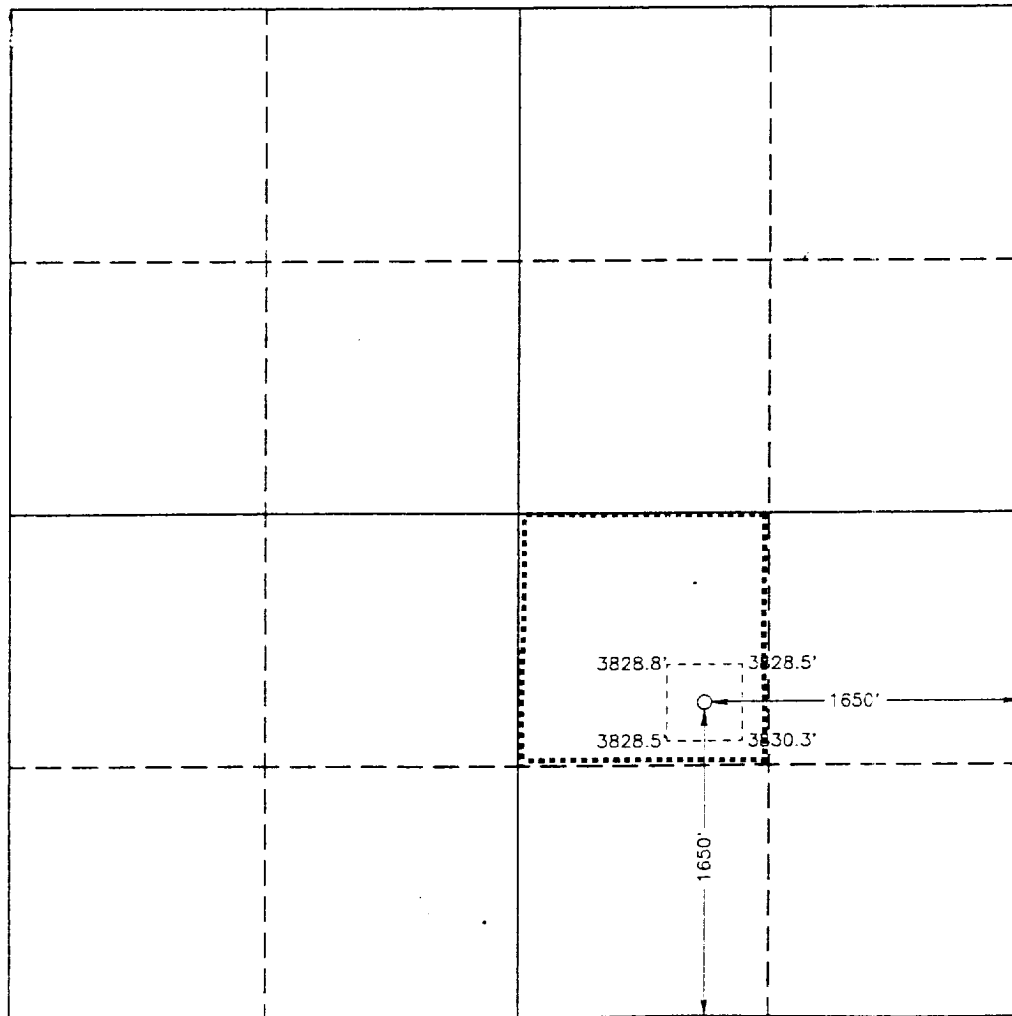
1000 Rio Brazos Rd., Aztec, NM 87410

WELL LOCATION AND ACREAGE DEDICATION PLAT

All Distances must be from the outer boundaries of the section

Operator MARALO, INC.			Lease CORBIN FEDERAL 13 "A"		Well No. 2
Unit Letter J	Section 13	Township 18 SOUTH	Range 32 EAST NMPM	County LEA	
Actual Footage Location of Well: 1650 feet from the SOUTH line and 1650 feet from the EAST line					
Ground Level Elev. 3827.8'	Producing Formation Delaware		Pool Corbin West Delaware		Dedicated Acreage: 40 Acres

- Outline the acreage dedicated to the subject well by colored pencil or hachure marks on the plat below.
- If more than one lease is dedicated to the well, outline each and identify the ownership thereof (both as to working interest and royalty).
- If more than one lease of different ownership is dedicated to the well, have the interest of all owners been consolidated by communitization, unitization, force-pooling, etc.?
☐ Yes ☐ No If answer is "yes" type of consolidation _____
If answer is "no" list of owners and tract descriptions which have actually been consolidated. (Use reverse side of this form necessary.)
No allowable will be assigned to the well unit all interests have been consolidated (by communitization, unitization, forced-pooling, otherwise) or until a non-standard unit, eliminating such interest, has been approved by the Division.



OPERATOR CERTIFICATION

I hereby certify the the information
contained herein is true and complete to the
best of my knowledge and belief.

Signature

Printed Name

Joe T. Janica

Position

AGENT

Company

Maralo, Inc.

Date

8-19-93

SURVEYOR CERTIFICATION

I hereby certify that the well location shown
on this plat was plotted from field notes of
actual surveys made by me or under my
supervision and that the same is true and
correct to the best of my knowledge and
belief.

Date Surveyed

AUGUST 12, 1993

Signature & Seal of
Professional Surveyor

GARY L. JONES
NEW MEXICO
Professional Surveyor

Certificate No. JOHN W. WEST, 576

RONALD J. EDSON, 3239

GARY L. JONES, 1377

8-24-1529

RECEIVED

SEP 21 1993

**JOHN F. KELLY
OFFICE**

APPLICATION TO DRILL

Maralo, Inc.
Corbin "13" Federal "A" #2
Sec. 13, T18S-R32E
Lea County, New Mexico

In response to questions asked under Section II B of Bulletin NTL-6, the following information is provided for your consideration:

1. Location: 1650' FSL & 1650' FNL Section 13, T18S-R32E, Lea County, New Mexico
2. Elevation Above Sea Level: GL 3827.8
3. Geologic Name of Surface Formation: Pleistocene Aeolian Deposits
4. Drilling Tools and Associated Equipment: Conventional rotary drilling rig using mud for the circulation medium.
5. Proposed Drilling Depth: 5300'
6. Estimated Geological Marker Tops:

Rustler	1300'	Grayburg	4615'
Top of Salt	1400'	"C" Sand	5000'
Base of Salt	2620'	"D" Sand	5080'
Yates	2670'	"E" Sand	5115'
Seven Rivers	2880'		
Queen	4020'		
7. Possible Mineral Bearing Formation:
Water bearing-none; Oil bearing-Yates, Queen, Delaware
8. Casing Program:
 - (A) Conductor pipe - 13 3/8" to 40', cement to surface
 - (B) 8 5/8" 24# J-55 ST&C set @ 450', cement with 300 sx class "C" cement 1/4# Flocele/sx + 2% CaCl, circulate cement to surface
 - (C) 5 1/2" 15.5# J-55 ST&C set @ 5300' cement with 320 sx of Halliburton Light, tail in with 250 sx of premium 50/50 Poz mix
9. Setting depth of casing and cement for same:
 - (A) 13 3/8" 54.5# casing set @ 40' cement with ready mix cement to surface.
 - (B) 8 5/8" 24# casing set @ 450' cement with 300 sx Class "C" 1/4# Flocele/sx 2% CaCl, circulate cement to surface.
 - (C) 5 1/2" 15.5# J-55 ST&C casing set @ 5300' cement with 320 sx Halliburton Light, tail in with 250 sx of Premium 50/50 Poz mix (Fill back to 1200).

RECEIVED

SEP 21 1993

U.S. HOUSE
OFFICE

Application to Drill
Maralo, Inc.

Corbin "13" Federal "A" #2

Page 2

10. Pressure Control Equipment: Exhibit "E". A 900 series blow-out preventer will be installed on 8 5/8" casing and tested. BOP will be tested as well as all chokes. BOP will be worked at least once each day during the drilling of the well. Flow sensor PVT, full opening stabbing valve, and upper Kelley Cock will be utilized.

11. Proposed Mud Circulating System:

Depth	Mud Wt.	Mud Visc.	Fluid Loss	Type Mud
0- 450	8.6 - 9.0	34-36	NC	Spud Mud
450-4500	10.0 - 10.1	28-29	NC	Brine water
4500-5300	10.0 - 10.2	29-31	10cc	Brine water w/ starch

To log may need to raise Visc w/WL below 8cc

12. Testing, Logging, and Coring Programs: (A) Possible D.S.T. if shows dictate (B) Two man Mud Logging Unit will start @ 2300'+ to total depth of 5300 TD. (C) Open hole logs: DLL w/LDT-CNL Cal-SFL from TD to 450'+ with gamma ray and neutron to surface. (D) No coring planned.

13. Potential Hazards: No abnormal pressure expected. No abnormal temperature zones are anticipated. Hydrogen sulfide gas is not expected to be a problem. See attached H₂S contingency plan.

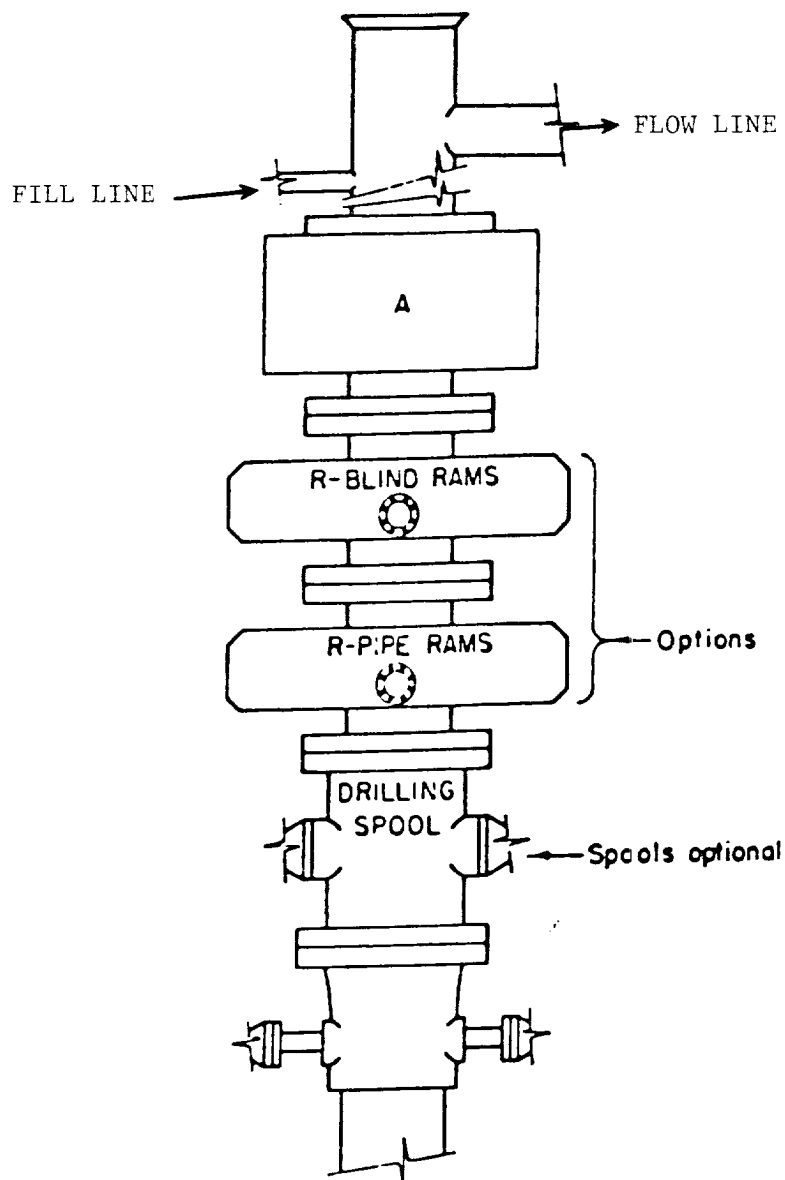
14. Anticipated Starting Date and Duration of Operation:
Commence ASAP 4 weeks to complete.

15. Other Facets of Operations: After running casing, cased hole gamma ray collar correlation logs will be run from total depth over possible pay intervals. The Delaware pay will be perforated and stimulated. The well will be swab tested and potentialized as an oil well.

RECEIVED

SEP 21 1993

OLD FORDS
OFFICE



ARRANGEMENT SRRA

EXHIBIT "E"
 BOP sketch of the type to be used
 Maralo, Inc.
 Corbin 13 Federal "A" #2
 1650' FEL & 1650' FSL
 Sec.13,T18S,R32E
 Lea County New Mexico

RECEIVED

SEP 21 1993

**DOJ RECORDS
OFFICE**