

Submit to Appropriate  
District Office  
State Lease - 4 copies  
Fee Lease - 3 copies

State of New Mexico  
Energy, Minerals and Natural Resources Department

Form C-102  
Revised 1-1-88

OIL CONSERVATION DIVISION

DISTRICT I  
P.O. Box 1980, Hobbs, NM 88240

P.O. Box 2088  
Santa Fe, New Mexico 87504-2088

DISTRICT II  
P.O. Drawer DD, Artesia, NM 88210

DISTRICT III  
1000 Rio Brazos Rd., Aztec, NM 87410

WELL LOCATION AND ACREAGE DEDICATION PLAT

All Distances must be from the outer boundaries of the section

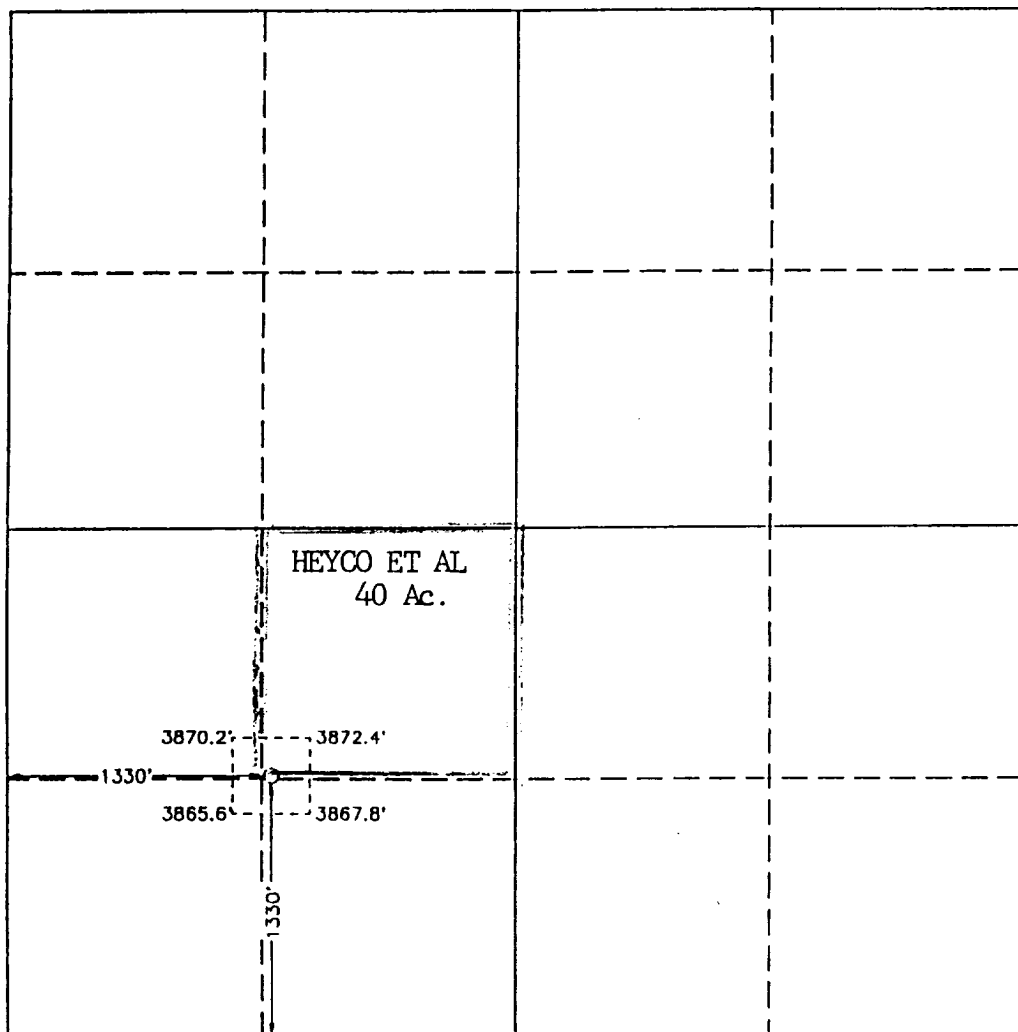
Operator HARVEY E. YATES CO.			Lease YOUNG DEEP UNIT		Well No. 21
Unit Letter K	Section 3	Township 18 SOUTH	Range 32 EAST	NMPM	County LEA
Actual Footage Location of Well: 1330 feet from the SOUTH line and 1330 feet from the WEST line					
Ground Level Elev. 3870.5'	Producing Formation Bone Spring		Pool Young Bone Spring, North		Dedicated Acreage: 40 Acres

1. Outline the acreage dedicated to the subject well by colored pencil or hatchure marks on the plat below.
2. If more than one lease is dedicated to the well, outline each and identify the ownership thereof (both as to working interest and royalty).
3. If more than one lease of different ownership is dedicated to the well, have the interest of all owners been consolidated by communitization, unitization, force-pooling, etc.?

☐ Yes ☐ No If answer is "yes" type of consolidation \_\_\_\_\_

If answer is "no" list of owners and tract descriptions which have actually been consolidated. (Use reverse side of this form necessary.)

No allowable will be assigned to the well unit all interests have been consolidated (by communitization, unitization, forced-pooling, otherwise) or until a non-standard unit, eliminating such interest, has been approved by the Division.



OPERATOR CERTIFICATION

I hereby certify that the information contained herein is true and complete to the best of my knowledge and belief.

Signature

Printed Name

Ray F. Nokes

Position

Prod. Mgr./Eng.

Company

Harvey E. Yates Company

Date

3-16-95

SURVEYOR CERTIFICATION

I hereby certify that the well location shown on this plat was plotted from field notes of actual surveys made by me or under my supervision, and that the same is true and correct to the best of my knowledge and belief.

Date Surveyed

SEPTEMBER 14, 1993

Signature & Seal of  
Professional Surveyor

GARY L. JONES  
NEW MEXICO  
7977  
Certification No. JOHN W. WEST, 878  
RONALD ANDERSON, 3239  
PROFESSIONAL SURVEYOR L. JONES, 7977

93-11-1766