

Submit to Appropriate
District Office
State Lease - 4 copies
Fee Lease - 3 copies

State of New Mexico
Energy, Minerals and Natural Resources Department

Form C-102
Revised 1-1-88

OIL CONSERVATION DIVISION

DISTRICT I
P.O. Box 1980, Hobbs, NM 88240

DISTRICT II
P.O. Drawer DD, Artesia, NM 88210

DISTRICT III
1000 Rio Brazos Rd., Aztec, NM 87410

P.O. Box 2088

Santa Fe, New Mexico 87504-2088

WELL LOCATION AND ACREAGE DEDICATION PLAT

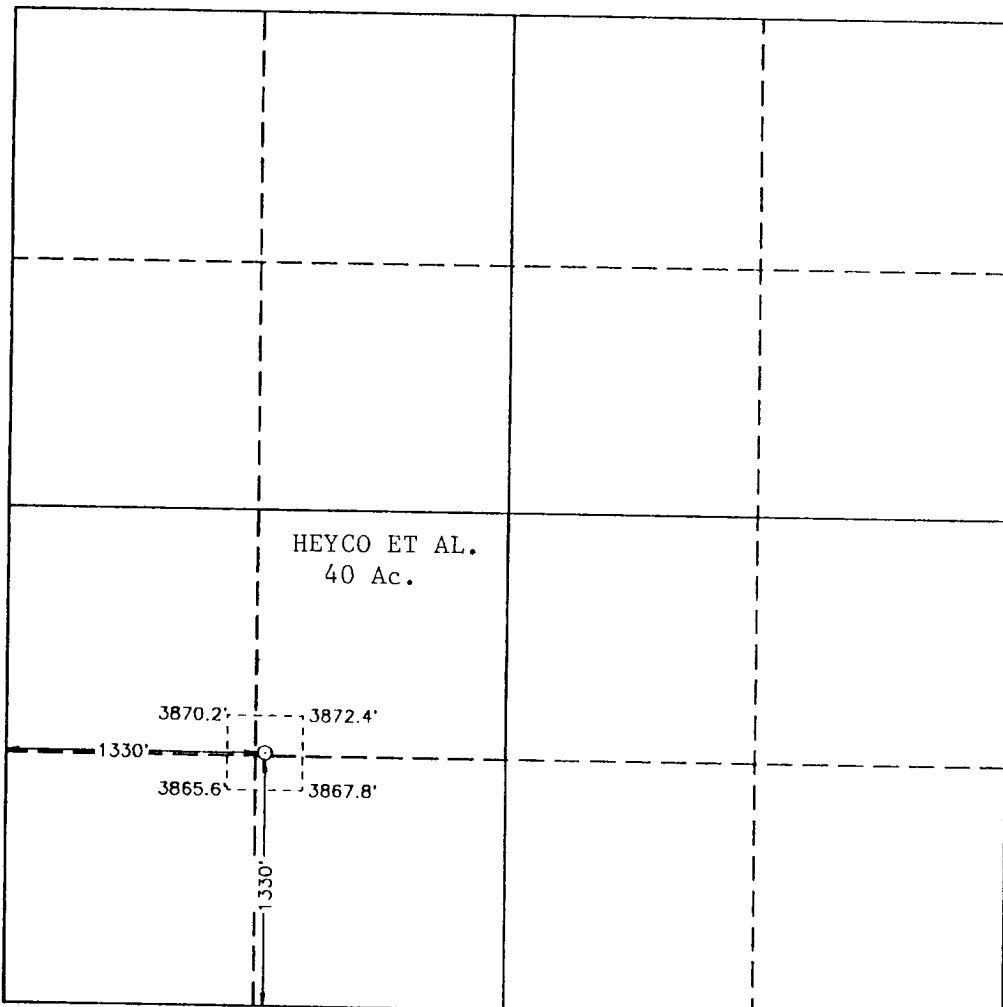
All Distances must be from the outer boundaries of the section

Operator HARVEY E. YATES CO.			Lease YOUNG DEEP UNIT		Well No. 21
Unit Letter K	Section 3	Township 18 SOUTH	Range 32 EAST	County LEA	
Actual Footage Location of Well: 1330 feet from the SOUTH line and 1330 feet from the WEST line					
Ground Level Elev. 3870.5'	Producing Formation Wolfcamp		Pool Young Wolfcamp	Dedicated Acreage: 40 Acres	

1. Outline the acreage dedicated to the subject well by colored pencil or hatchure marks on the plat below.
2. If more than one lease is dedicated to the well, outline each and identify the ownership thereof (both as to working interest and royalty).
3. If more than one lease of different ownership is dedicated to the well, have the interest of all owners been consolidated by communization, unitization, force-pooling, etc.?
☐ Yes ☐ No If answer is "yes" type of consolidation _____

If answer is "no" list of owners and tract descriptions which have actually been consolidated. (Use reverse side of this form necessary.)

No allowable will be assigned to the well unit all interests have been consolidated (by communization, unitization, forced-pooling, otherwise) or until a non-standard unit, eliminating such interest, has been approved by the Division.



OPERATOR CERTIFICATION

I hereby certify the information contained herein is true and complete to the best of my knowledge and belief.

Signature
Printed Name
Ray F. Nokes
Position
Prod. Mgr./Eng.
Company
Harvey E. Yates Company
Date
3-4-94

SURVEYOR CERTIFICATION

I hereby certify that the well location shown on this plat was plotted from field notes of actual surveys made by me or under my supervision, and that the same is true and correct to the best of my knowledge and belief.

Date Surveyed
SEPTEMBER 14, 1993

Signature & Seal of
Professional Surveyor

GARY L. JONES
NEW MEXICO
7917
Certified No. JOHN W. WEST, 676
RONALD W. JONES, 3239
JONES, 7917

93-11-1766