

Submit to Appropriate
District Office
State Lease - 6 copies
Fee Lease - 5 copies

State of New Mexico
Energy, Minerals and Natural Resources Department

Form C-101
Revised 1-1-89

OIL CONSERVATION DIVISION

DISTRICT I
P.O. Box 1980, Hobbs, NM 88240

DISTRICT II
P.O. Drawer DD, Artesia, NM 88210

DISTRICT III
1000 Rio Brazos Rd., Aztec, NM 87410

P.O. Box 2088
Santa Fe, New Mexico 87504-2088

API NO. (assigned by OCD on New Wells)
30-025-32364

5. Indicate Type of Lease
STATE ☒ FEE ☐

6. State Oil & Gas Lease No.
A-1320

APPLICATION FOR PERMIT TO DRILL, DEEPEN, OR PLUG BACK

1a. Type of Work:

DRILL ☒ RE-ENTER ☐ DEEPEN ☐ PLUG BACK ☐

b. Type of Well:

OIL WELL ☒ GAS WELL ☐ OTHER ☐ SINGLE ZONE ☐ MULTIPLE ZONE ☐

2. Name of Operator

Phillips Petroleum Company

<017643>

7. Lease Name or Unit Agreement Name

<13120>

Vacuum Glorieta East Unit

3. Address of Operator

4001 Penbrook Street, Odessa, TX 79762

8. Well No.

13 Tract 1

9. Pool name or Wildcat

Vacuum Glorieta <62160>

4. Well Location

Unit Letter J : 1455 Feet From The South Line and 1330 Feet From The East Line

Section 28

Township 17-S

Range 35-E

NMPM Lea

County

10. Proposed Depth

6350'

11. Formation

Paddock

12. Rotary or C.T.

Rotary

13. Elevations (Show whether DF, RT, GR, etc.)

3942.5' GL

14. Kind & Status Plug. Bond

Blanket

15. Drilling Contractor

NA

16. Approx. Date Work will start

Upon approval

17. PROPOSED CASING AND CEMENT PROGRAM

SIZE OF HOLE	SIZE OF CASING	WEIGHT PER FOOT	SETTING DEPTH	SACKS OF CEMENT	EST. TOP
12-1/4"	8-5/8"	24#	1625' 450	sx C Tail w/200sx C 1250'	
7-7/8"	5-1/2"	15.5#	6350' 300	sx C 50/50 poz. 5200'	
			2nd Stage:	1000 sx C 65/35 poz. Surf.	
				300 sx C 50/50 poz. 4000'	

NSL-3337

IN ABOVE SPACE DESCRIBE PROPOSED PROGRAM: IF PROPOSAL IS TO DEEPEN OR PLUG BACK, GIVE DATA ON PRESENT PRODUCTIVE ZONE AND PROPOSED NEW PRODUCTIVE ZONE. GIVE BLOWOUT PREVENTER PROGRAM, IF ANY.

I hereby certify that the information above is true and complete to the best of my knowledge and belief.

SIGNATURE L. M. Sanders TITLE Supv. Regulatory Affairs DATE 12-14-93

TYPE OR PRINT NAME L. M. Sanders

(915)
TELEPHONE NO. 368-1488

(This space for State Use)

ORIGINAL SIGNED BY JERRY SEXTON
DISTRICT I SUPERVISOR

APPROVED BY _____ TITLE _____ DATE JAN 06 1994

CONDITIONS OF APPROVAL, IF ANY:

Submit to Appropriate
District Office
State Lease - 4 copies
Fee Lease - 3 copies

State of New Mexico
Energy, Minerals and Natural Resources Department

Form C-102
Revised 1-1-89

OIL CONSERVATION DIVISION

P.O. Box 2088
Santa Fe, New Mexico 87504-2088

DISTRICT I

P.O. Box 1980, Hobbs, NM 88240

DISTRICT II

P.O. Drawer DD, Artesia, NM 88210

DISTRICT III

1000 Rio Brazos Rd., Artec, NM 87410

WELL LOCATION AND ACREAGE DEDICATION PLAT

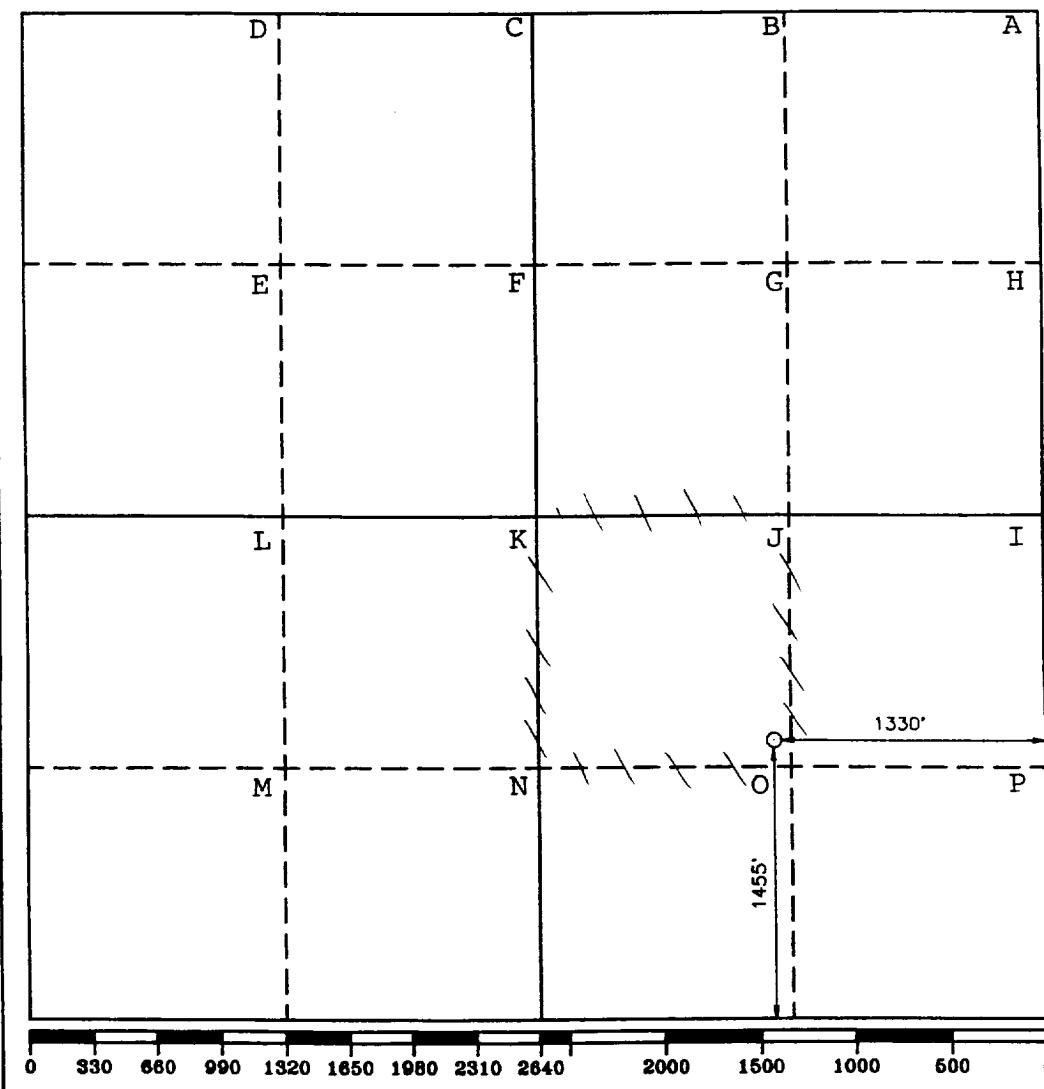
All Distances must be from the outer boundaries of the section

Operator PHILLIPS PETROLEUM CO.			Lease VACUUM GLORIETA EAST UNIT TRACT 1		Well No. 13
Unit Letter J	Section 28	Township 17 SOUTH	Range 35 EAST	NMPM	County LEA
Actual Footage Location of Well: 1455 feet from the SOUTH line and 1330 feet from the EAST line					
Ground Level Elev. 3942.5'	Producing Formation Paddock		Pool Vacuum Glorieta		Dedicated Acreage: 40 Acres

1. Outline the acreage dedicated to the subject well by colored pencil or hachure marks on the plat below.
2. If more than one lease is dedicated to the well, outline each and identify the ownership thereof (both as to working interest and royalty).
3. If more than one lease of different ownership is dedicated to the well, have the interest of all owners been consolidated by communization, unitization, force-pooling, etc.?
☐ Yes ☐ No If answer is "yes" type of consolidation _____

If answer is "no" list of owners and tract descriptions which have actually been consolidated. (Use reverse side of this form necessary.)

No allowable will be assigned to the well unit all interests have been consolidated (by communization, unitization, forced-pooling, otherwise) or until a non-standard unit, eliminating such interest, has been approved by the Division.



OPERATOR CERTIFICATION

I hereby certify the the information contained herein is true and complete to the best of my knowledge and belief.

Signature

Printed Name

L. M. Sanders

Position

Supv., Reg. Affairs

Company

Phillips Petroleum Co.

Date

December 14, 1993

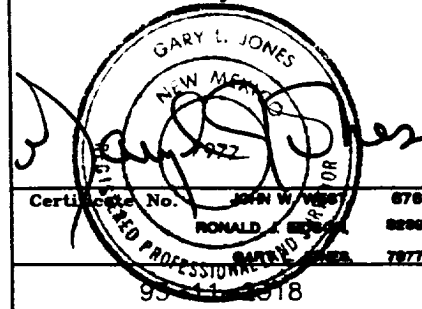
SURVEYOR CERTIFICATION

I hereby certify that the well location shown on this plat was plotted from field notes of actual surveys made by me or under my supervision, and that the same is true and correct to the best of my knowledge and belief.

Date Surveyed

DECEMBER 1, 1993

Signature & Seal of
Professional Surveyor



PROPOSED CASING & CEMENTING PROGRAM

Vacuum Glorieta East Unit 1-13

8 5/8" 24 lb/ft J-55 Surface Casing Set at 1625' - 12 1/4" Hole:

Lead: 450 Class "C" + 4% Gel + 2% CaCl₂. Desired TOC = Surface.

Slurry Weight:	13.5 ppg
Slurry Yield:	1.72 ft ³ /sx
Water Requirement:	9.06 gals/sx

Tail: 200 sx Class "C" + 2% CaCl₂. Desired TOC = 1250'.

Slurry Weight:	14.8 ppg
Slurry Yield:	1.32 ft ³ /sx
Water Requirement:	6.3 gals/sx

5 1/2" 15.5 lb/ft J-55 Production Casing Set at 6350' - 7 7/8" Hole:

Set stage tool at 5200'.

1st Stage:

300 sx Class "C" 50/50 Poz. Desired TOC = 5200'.

Slurry Weight:	14.6 ppg
Slurry Yield:	1.15 ft ³ /sx
Water Required:	5.0 gal/sx

2nd Stage:

Lead: 1000 sx Class "C" 65/35 Poz + 6% Gel + 3% Salt. Desired TOC = Surface.

Slurry Weight:	12.8 ppg
Slurry Yield:	1.85 ft ³ /sx
Water Requirement:	9.9 gals/sx

Tail: 300 sx Class "C" 50/50 Poz. Desired TOC = 4000'.

Slurry Weight:	14.6 ppg
Slurry Yield:	1.15 ft ³ /sx
Water Required:	5.0 gal/sx

PROPOSED MUD PROGRAM

Vacuum Glorieta East Unit 1-13

DEPTH	MUD WEIGHT	VISCOSITY	FLUID LOSS	CL PPM	% SOLIDS	ADDITIVES
Surf - 1625'	8.3-9.0 ppg	28-36 sec/1000 cc	-	-	-	Native Solids
1625' - 5800'	10.0 ppg	28-32 sec/1000 cc	-	Saturated	-	Native Solids
5800' - 6350'	10.0-10.2 ppg	32-36 sec/1000 cc	20 cc	Saturated	-	Starch

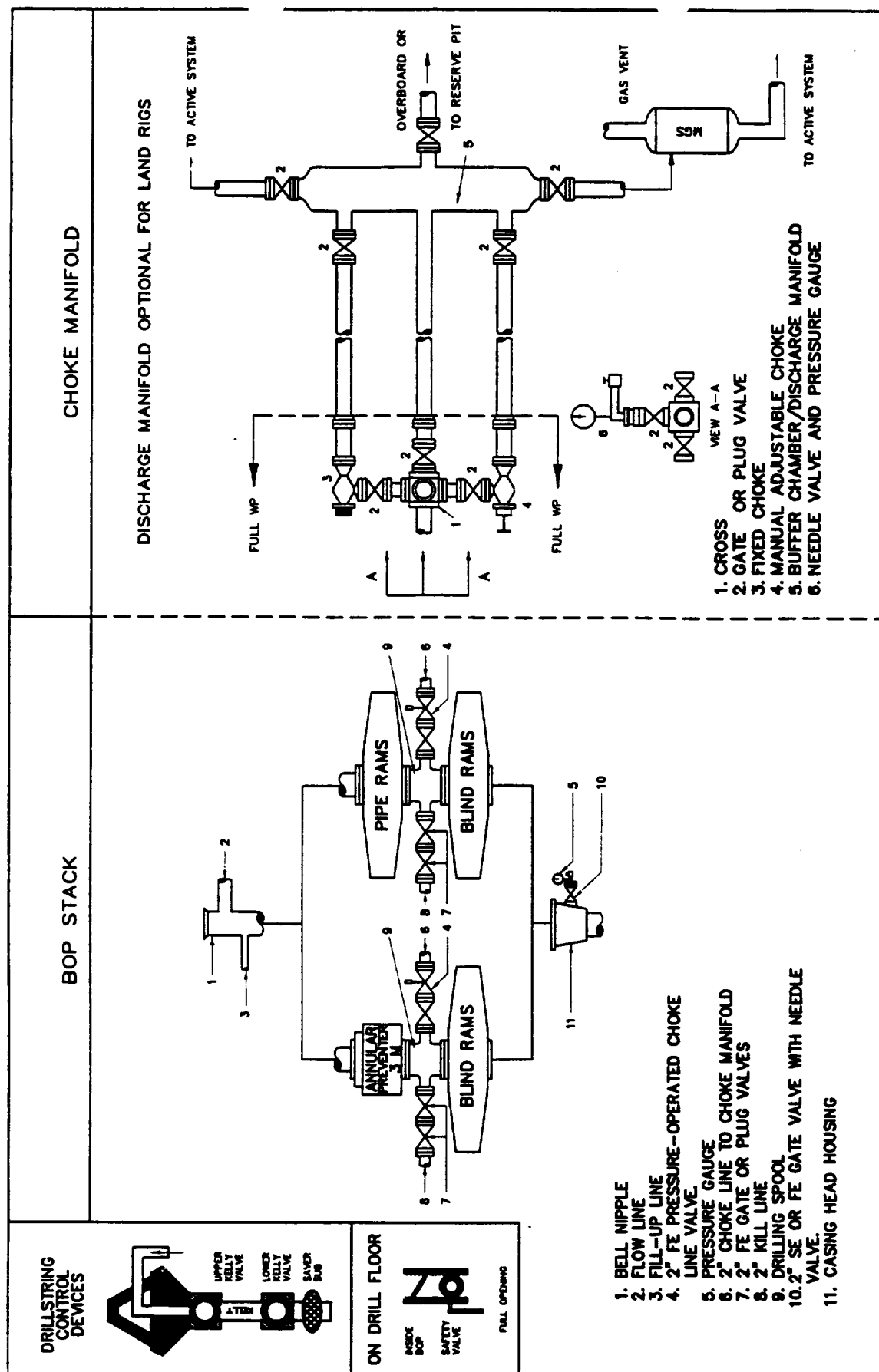


Fig. 2.4. Class 2 BOP and Choke Manifold.