

Submit to Appropriate
District Office
State Lease - 6 copies
Fee Lease - 5 copies

State of New Mexico
Energy, Minerals and Natural Resources Department

Form C-101
Revised 1-1-89

DISTRICT I
P.O. Box 1980, Hobbs, NM 88240

DISTRICT II
P.O. Drawer DD, Artesia, NM 88210

DISTRICT III
1000 Rio Brazos Rd., Aztec, NM 87410

OIL CONSERVATION DIVISION
P.O. Box 2088
Santa Fe, New Mexico 87504-2088

| |
|---|
| API NO. (assigned by OCD on New Wells) |
| 3D-025-32367 |
| 5. Indicate Type of Lease STATE <input checked="" type="checkbox"/> FEE <input type="checkbox"/> |
| 6. State Oil & Gas Lease No. B-1839-1 |
| 7. Lease Name or Unit Agreement Name <13126> Vacuum Glorieta East Unit |
| 8. Well No. 6 Tract 26 |
| 9. Pool name or Wildcat Vacuum Glorieta <62167> |

APPLICATION FOR PERMIT TO DRILL, DEEPEN, OR PLUG BACK

| | |
|--|--|
| 1a. Type of Work: DRILL <input checked="" type="checkbox"/> RE-ENTER <input type="checkbox"/> DEEPEN <input type="checkbox"/> PLUG BACK <input type="checkbox"/> | |
| b. Type of Well: OIL WELL <input checked="" type="checkbox"/> GAS WELL <input type="checkbox"/> OTHER <input type="checkbox"/> SINGLE ZONE <input type="checkbox"/> MULTIPLE ZONE <input type="checkbox"/> | |
| 2. Name of Operator Phillips Petroleum Company <017643> | |
| 3. Address of Operator 4001 Penbrook Street, Odessa, TX 79762 | |
| 4. Well Location Unit Letter F : 1550 Feet From The North Line and 1410 Feet From The West Line Section 27 Township 17-S Range 35-E NMPM Lea County | |

| | | |
|--|---|-------------------------------|
| 10. Proposed Depth 6300' | 11. Formation Paddock | 12. Rotary or C.T. Rotary |
| 13. Elevations (Show whether DF, RT, GR, etc.) 3935.5' GL | 14. Kind & Status Plug. Bond Blanket | 15. Drilling Contractor NA |
| 16. Approx. Date Work will start Upon Approval | | |

| 17. PROPOSED CASING AND CEMENT PROGRAM | | | | | |
|--|----------------|-----------------|---------------|--------------------|----------|
| SIZE OF HOLE | SIZE OF CASING | WEIGHT PER FOOT | SETTING DEPTH | SACKS OF CEMENT | EST. TOP |
| 12-1/4" | 8-5/8" | 24# | 1675' | 450 sx C tail w/ | Surf. |
| | | | | 200 sx C | 1250' |
| 7-7/8" | 5-1/2" | 15.5# | 6300' | 300 sx C 50/50 poz | 5200' |

2nd Stg.: 1000 sx C 65/35 poz Surf.
Tail w/300 sx C 50/50 poz. 4000'

NSL-3337

NSL-3337

IN ABOVE SPACE DESCRIBE PROPOSED PROGRAM: IF PROPOSAL IS TO DEEPEN OR PLUG BACK, GIVE DATA ON PRESENT PRODUCTIVE ZONE AND PROPOSED NEW PRODUCTIVE ZONE. GIVE BLOWOUT PREVENTER PROGRAM, IF ANY.

I hereby certify that the information above is true and complete to the best of my knowledge and belief.

SIGNATURE L. M. Sanders TITLE Supv. Regulatory Affairs DATE 12-14-93

TYPE OR PRINT NAME L. M. Sanders

(915)
TELEPHONE NO. 368-1488

(This space for State Use)

ORIGINAL SIGNED BY JERRY SEXTON
DISTRICT I SUPERVISOR

APPROVED BY _____ TITLE _____ DATE JAN 06 1994

CONDITIONS OF APPROVAL, IF ANY:

dp

Submit to Appropriate
District Office
State Lease - 4 copies
Fee Lease - 3 copies

State of New Mexico
Energy, Minerals and Natural Resources Department

Form C-102
Revised 1-1-89

OIL CONSERVATION DIVISION

P.O. Box 2088
Santa Fe, New Mexico 87504-2088

DISTRICT I

P.O. Box 1980, Hobbs, NM 88240

DISTRICT II

P.O. Drawer DD, Artesia, NM 88210

DISTRICT III

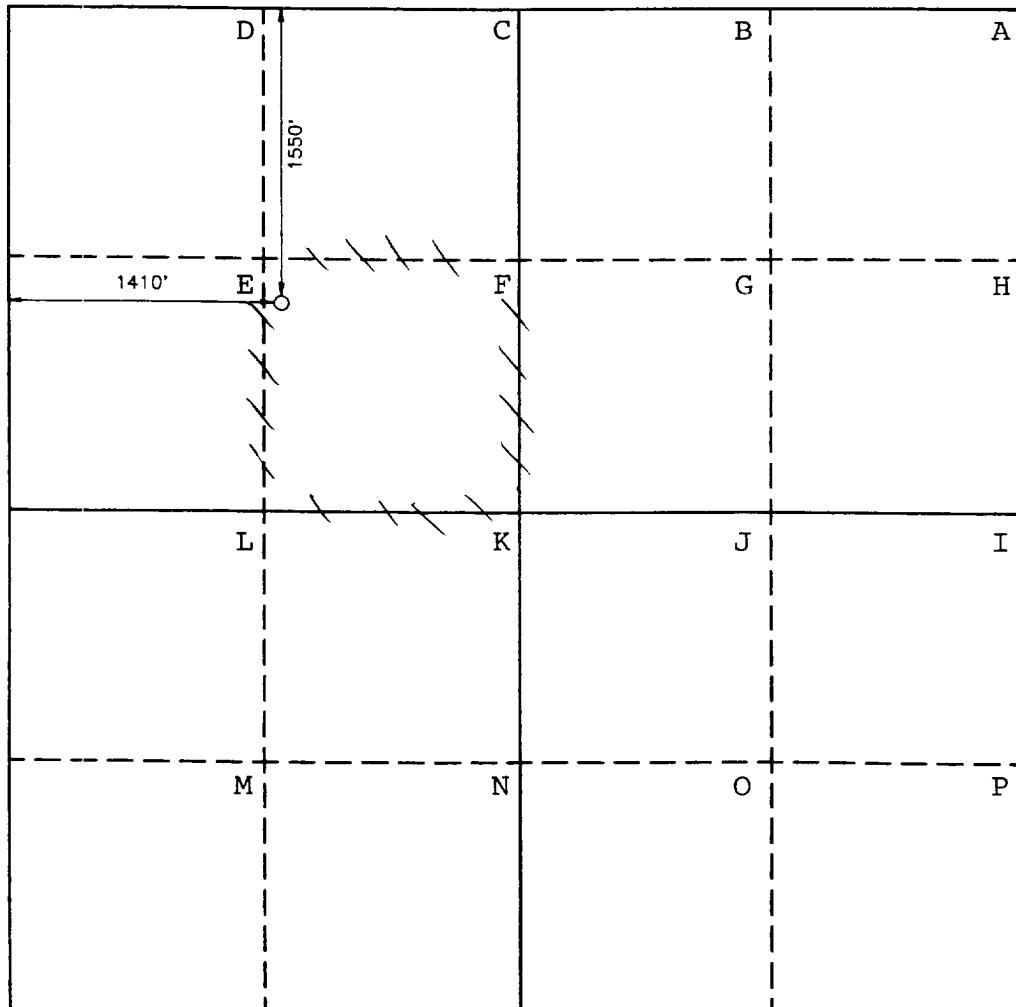
1000 Rio Brazos Rd., Aztec, NM 87410

WELL LOCATION AND ACREAGE DEDICATION PLAT

All Distances must be from the outer boundaries of the section

| | | | | | |
|--|--------------------------------|----------------------|---|---------------|--------------------------------|
| Operator PHILLIPS PETROLEUM CO. | | | Lease VACUUM GLORIETA EAST UNIT TRACT 26 | | Well No. 6 |
| Unit Letter F | Section 27 | Township 17 SOUTH | Range 35 EAST NMPM | County LEA | |
| Actual Footage Location of Well: 1550 feet from the NORTH line and 1410 feet from the WEST line | | | | | |
| Ground Level Elev. 3935.5' | Producing Formation Paddock | | Pool Vacuum Glorieta | | Dedicated Acreage: 40 Acres |

- Outline the acreage dedicated to the subject well by colored pencil or hatchure marks on the plat below.
- If more than one lease is dedicated to the well, outline each and identify the ownership thereof (both as to working interest and royalty).
- If more than one lease of different ownership is dedicated to the well, have the interest of all owners been consolidated by communitization, unitization, force-pooling, etc.?
☐ Yes ☐ No If answer is "yes" type of consolidation _____
If answer is "no" list of owners and tract descriptions which have actually been consolidated. (Use reverse side of this form necessary.)
No allowable will be assigned to the well unit all interests have been consolidated (by communitization, unitization, forced-pooling, otherwise) or until a non-standard unit, eliminating such interest, has been approved by the Division.



OPERATOR CERTIFICATION

I hereby certify the the information
contained herein is true and complete to the
best of my knowledge and belief.

Signature

Printed Name

L. M. Sanders

Position

Supv., Reg. Affairs

Company

Phillips Petroleum Co.

Date

December 14, 1993

SURVEYOR CERTIFICATION

I hereby certify that the well location shown
on this plat was plotted from field notes of
actual surveys made by me or under my
supervision, and that the same is true and
correct to the best of my knowledge and
belief.

Date Surveyed

DECEMBER 1, 1993

Signature & Seal of
Professional Surveyor

Certificate No.

JOHN W. WEST 876

RONALD J. EDDOCK 8230

GARY L. JONES 7977

PROPOSED CASING & CEMENTING PROGRAM

Vacuum Glorieta East Unit 26-06

8 5/8" 24 lb/ft J-55 Surface Casing Set at 1675' - 12 1/4" Hole:

Lead: 450 Class "C" + 4% Gel + 2% CaCl_2 . Desired TOC = Surface.

| | |
|--------------------|--------------------------|
| Slurry Weight: | 13.5 ppg |
| Slurry Yield: | 1.72 ft ³ /sx |
| Water Requirement: | 9.06 gals/sx |

Tail: 200 sx Class "C" + 2% CaCl_2 . Desired TOC = 1250'.

| | |
|--------------------|--------------------------|
| Slurry Weight: | 14.8 ppg |
| Slurry Yield: | 1.32 ft ³ /sx |
| Water Requirement: | 6.3 gals/sx |

5 1/2" 15.5 lb/ft J-55 Production Casing Set at 6300' - 7 7/8" Hole:

Set stage tool at 5200'.

1st Stage:

300 sx Class "C" 50/50 Poz. Desired TOC = 5200'.

| | |
|-----------------|--------------------------|
| Slurry Weight: | 14.6 ppg |
| Slurry Yield: | 1.15 ft ³ /sx |
| Water Required: | 5.0 gal/sx |

2nd Stage:

Lead: 1000 sx Class "C" 65/35 Poz + 6% Gel + 3% Salt. Desired TOC = Surface.

| | |
|--------------------|--------------------------|
| Slurry Weight: | 12.8 ppg |
| Slurry Yield: | 1.85 ft ³ /sx |
| Water Requirement: | 9.9 gals/sx |

Tail: 300 sx Class "C" 50/50 Poz. Desired TOC = 4000'.

| | |
|-----------------|--------------------------|
| Slurry Weight: | 14.6 ppg |
| Slurry Yield: | 1.15 ft ³ /sx |
| Water Required: | 5.0 gal/sx |

PROPOSED MUD PROGRAM

Vacuum Glorieta East Unit 26-06

| DEPTH | MUD WEIGHT | VISCOSITY | FLUID LOSS | CL PPM | % SOLIDS | ADDITIVES |
|---------------|---------------|-------------------|------------|-----------|----------|---------------|
| Surf - 1675' | 8.3-9.0 ppg | 28-36 sec/1000 cc | - | - | - | Native Solids |
| 1675' - 5800' | 10.0 ppg | 28-32 sec/1000 cc | - | Saturated | - | Native Solids |
| 5800' - 6300' | 10.0-10.2 ppg | 32-36 sec/1000 cc | 20 cc | Saturated | - | Starch |

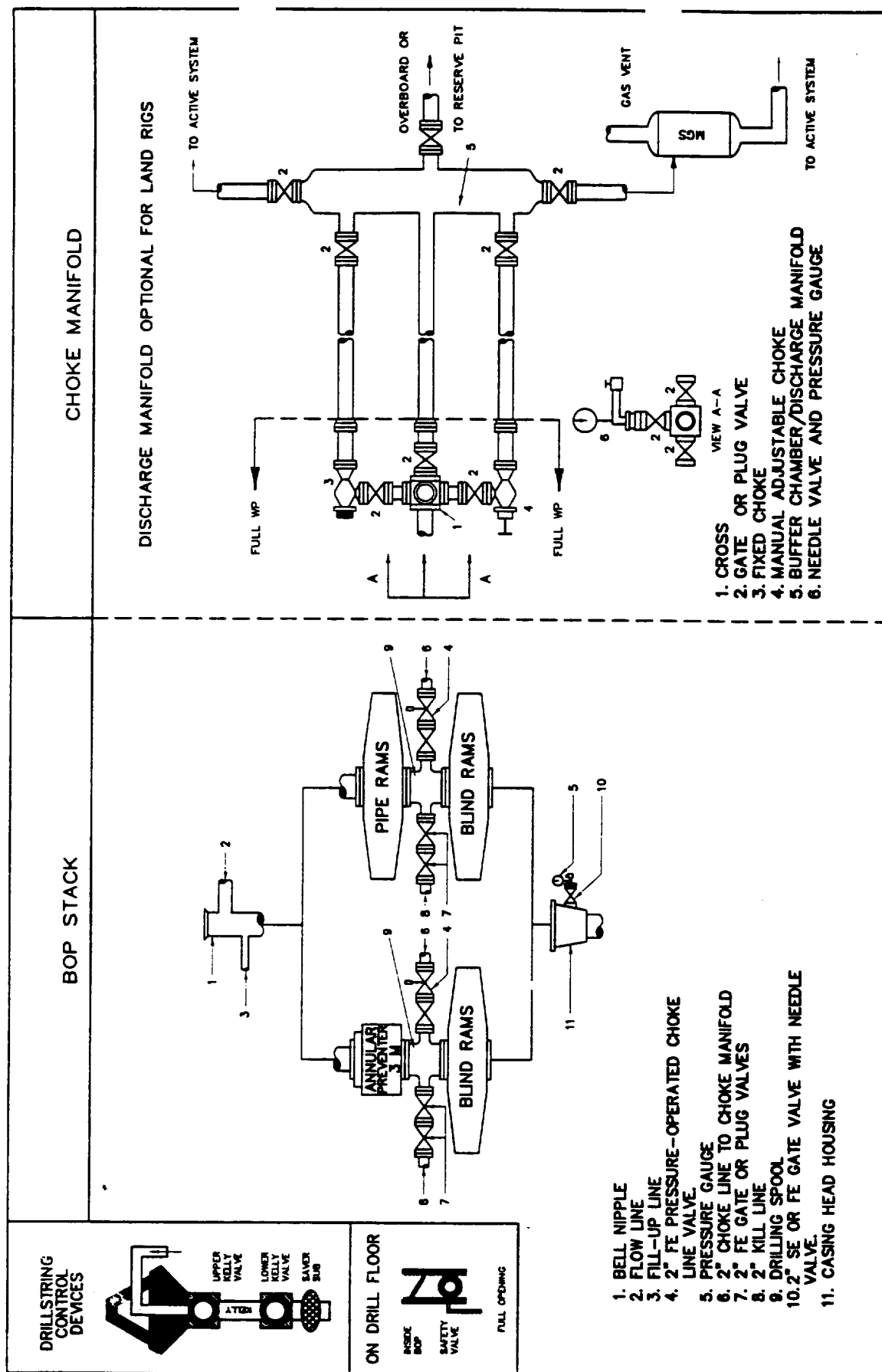


Fig. 2.4. Class 2 BOP and Choke Manifold.