

Submit to Appropriate
District Office
State Lease - 6 copies
Fee Lease - 5 copies

State of New Mexico
Energy, Minerals and Natural Resources Department

Form C-101
Revised 1-1-89

OIL CONSERVATION DIVISION

DISTRICT I
P.O. Box 1980, Hobbs NM 88240

P.O. Box 2088

DISTRICT II
P.O. Drawer DD, Artesia, NM 88210

Santa Fe, New Mexico 87504-2088

DISTRICT III
1000 Rio Brazos Rd., Aztec, NM 87410

API NO. (assigned by OCD on New Wells)

5. Indicate Type of Lease

STATE ☒ FEE ☐

6. State Oil & Gas Lease No.

APPLICATION FOR PERMIT TO DRILL, DEEPEN, OR PLUG BACK

1a. Type Of Work:

DRILL ☒ RE-ENTER ☐ DEEPEN ☐ PLUG BACK ☐

b. Type of Well:

OIL WELL ☒ GAS WELL ☐ OTHER ☐ SINGLE ZONE ☒ MULTIPLE ZONE ☐

2. Name of Operator

MOBIL PRODUCING TX & NM INC.*

8. Well No.

12

3. Address of Operator

***MOBIL EXPLORATION & PRODUCING US INC AS AGENT FOR MPTM, BOX 633,
MIDLAND, TX 79702**

9. Pool name or Wildcat

VACUUM (DRINKARD)

4. Well Location

Unit Letter **P** : **330** Feet From The **SOUTH** Line and **990** Feet From The **EAST** Line

Section **31**

Township **17-S**

Range **35-E**

NMPM LEA

County

10. Proposed Depth
8200

11. Formation
DRINKARD

12. Rotary or C.T.
ROTARY

13. Elevations (Show whether DF, RT, GR, etc.)
GL 3972

14. Kind & Status Plug. Bond

15. Drilling Contractor

16. Approx. Date Work will start
02-08-94

17.

PROPOSED CASING AND CEMENT PROGRAM

SIZE OF HOLE	SIZE OF CASING	WEIGHT PER FOOT	SETTING DEPTH	SACKS OF CEMENT	EST. TOP
11	8-5/8	24	1480	450 CL C	
7-7/8	5-1/2	17	8150/8200	920 CL H	

SEE ATTACHED DRILLING SUMMARY, CASING DIAGRAM AND CEMENT DETAIL FOR
ADDITIONAL INFORMATION

CHER. GRID NO. 015144
PROPERTY NO. 713709
POOL CODE 62110
EFF. DATE 2-3-94
API NO. 30-025-32413

IN ABOVE SPACE DESCRIBE PROPOSED PROGRAM: IF PROPOSAL IS TO DEEPEN OR PLUG BACK, GIVE DATA ON PRESENT PRODUCTIVE ZONE AND PROPOSED NEW PRODUCTIVE ZONE. GIVE BLOWOUT PREVENTER PROGRAM, IF ANY.

I hereby certify that the information above is true and complete to the best of my knowledge and belief.

SIGNATURE Kaye Pollock-Lyon TITLE **ENV & REG TECHNICIAN** DATE **02-01-94**

TYPE OR PRINT NAME **KAYE POLLOCK-LYON**

TELEPHONE NO. **915-688-2584**

(This space for State Use)

**ORIGINAL SIGNED BY JERRY SEXTON
DISTRICT I SUPERVISOR**

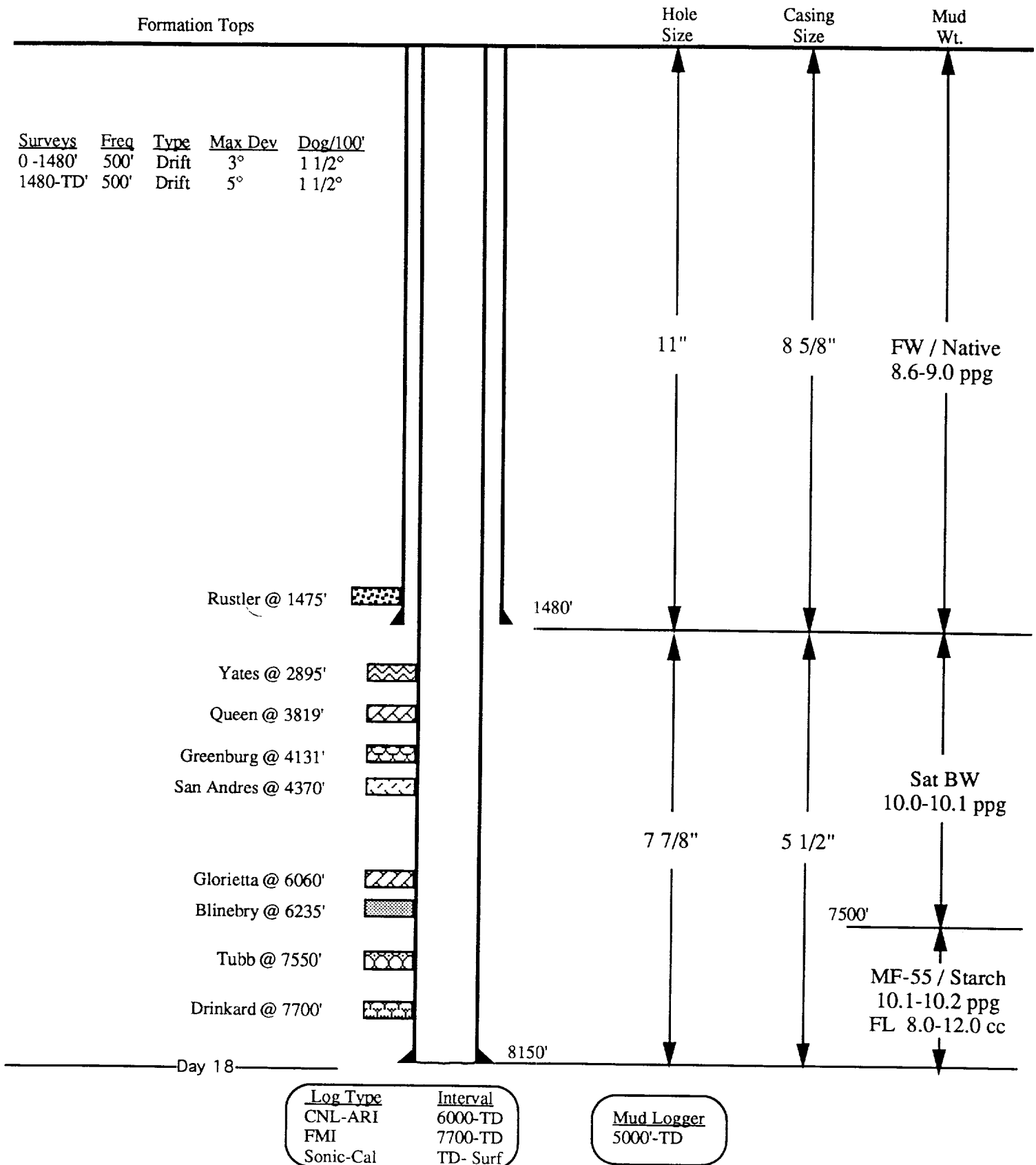
APPROVED BY _____ TITLE _____ DATE **FEB 04 1994**

CONDITIONS OF APPROVAL, IF ANY:

**Permit Expires 6 Months From Approval
Date Unless Drilling Underway.**

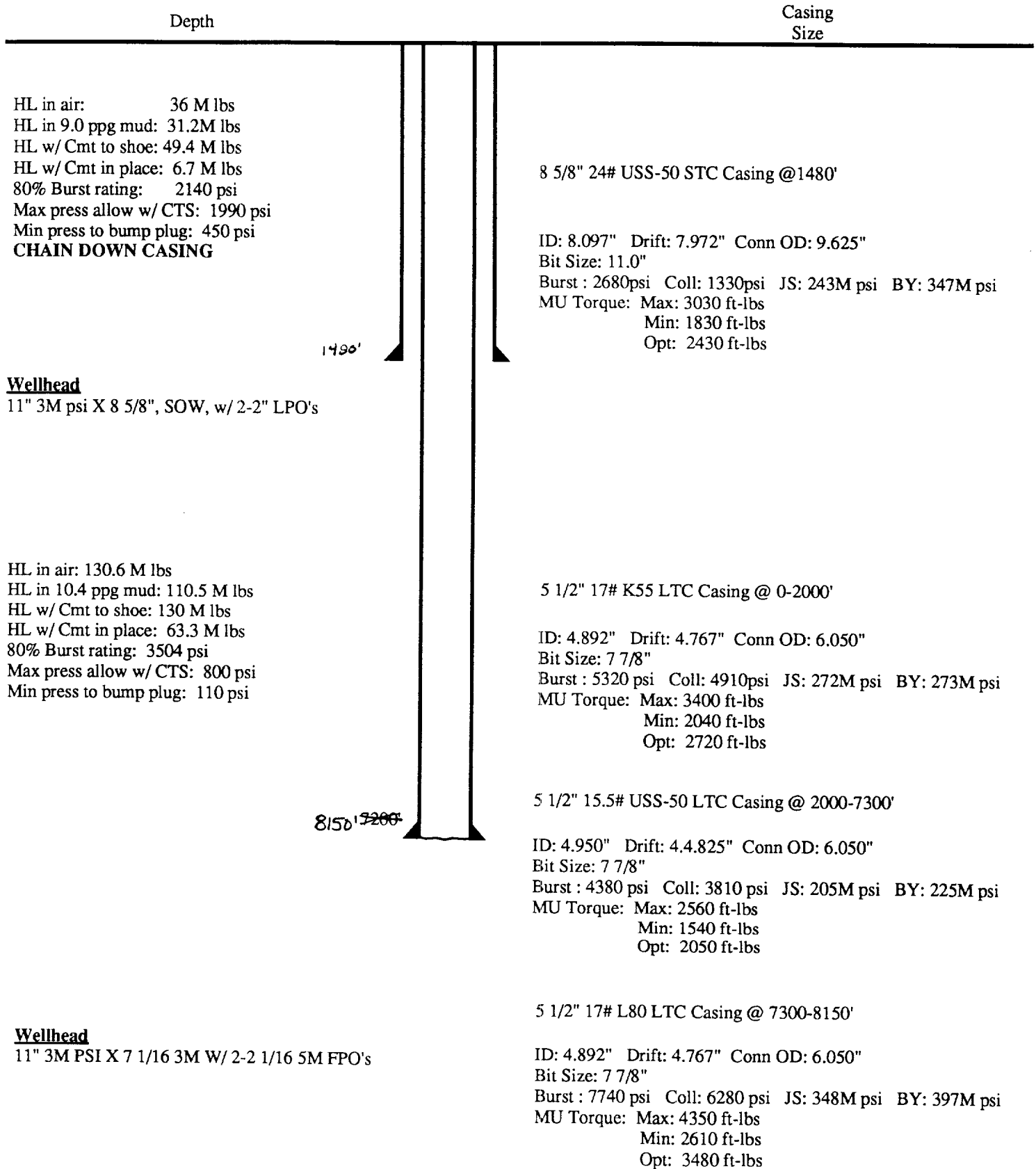
State "K" #12, #11

DRILLING SUMMARY



STATE "K" #12, #11

CASING DIAGRAM



STATE "K" #12, #11

CEMENTING DETAIL

SURFACE

8 5/8" 24# USS-50 STC Casing @ 1480'

Casing Running Order

- Float Shoe
- 1 jt 8 5/8" casing
- Float Collar (Thread Lock from FC down)

Centralizers:

- 1 - 5' above shoe
 - 1 - 5' float collar
 - 1 - every fourth collar to Surface
- Total: 11- centralizers
2-stop collars

Surface

Spacer: 25 bbls FW

*Lead: 250 sx "C" + 4% D20 + 2% S1 + 0.25 pps D29

*Tail: 200 sx "C" + 2% S1 + 0.25 pps D29

	<u>Lead</u>	<u>Tail</u>
Weight (ppg)	13.5	14.8
Yield (cf/sx)	1.74	1.32
Mix Water (gps)	9.11	6.32
Thick Time (hrs:min)	≥ 3:20	≥ 2:00
Free Water (cc/30 min)	≤ 1%	≤ 1%
Fluid Loss (cc's)	NC	NC
12 Hr Comp Strength	≥ 500	≥ 700
72 Hr Comp Strength	≥ 1500	≥ 1500
Top of Cement	0	500'

* Est. volumes based on gauge hole + 100% excess.
Run fluid or mechanical caliper to determine exact volumes.

- 1) Chain Down Casing
- 2) Circ. one hole vol. prior to cementing.
- 3) Displace cement w/ FW @ 6-7 bpm. **DO NOT OVERDISPLACE**
- 4) If cement does not circ. to surface, contact Drlg. Supt. and the NMOC.
- 5) Test casing to 1500 psi.
- 6) **WAIT MIN 8 HRS PRIOR TO DRILL OUT**

PRODUCTION

5 1/2" 17 K55 LTC Casing @ 0-2000'
5 1/2" 15.5# USS50 STC Casing @ 2000-7300'
5 1/2" 17# L80 LTC Casing @ 7300-8150'

Production

Spacer: 25 bbls FW

**Lead: 670 sx 35/65 (Poz/H) + 6% D20 + 5% D44 + 0.25 pps D29

**Tail: 250 sx "H" + .025 pps D29

Casing Running Order

- Float Shoe
- 2 jts 5 1/2" casing
- Float Collar (Thread Lock from FC down)

Centralizers:

- 1 - 5' above shoe
 - 1 - 5' above float collar
 - 1 - every third collar
- Total: 27- centralizers
2- stop collars

	<u>Lead</u>	<u>Tail</u>
Weight (ppg)	12.8	16.4
Yield (cf/sx)	1.96	1.06
Mix Water (gps)	10.46	4.34
Thick Time (hrs:min)	≥ 3:00	≥ 2:39
Free Water (cc/30 min)	≤ 1%	≤ 1%
Fluid Loss (cc's)	NC	NC
12 Hr Comp Strength	≥ 400	≥ ***
72 Hr Comp Strength	≥ ***	≥ ***
Top of Cement	3700'	7500"

** Est volumes based on gauged hole size or 50% excess. Run log caliper for actual volumes. Use 25% excess for open hole x 5 1/2" casing annulus.

- 1) Reciprocate casing 15'-20' while conditioning hole
- 2) Circ. one hole vol. prior to cementing.
- 3) Displace cement w/ FW @ 4-6 bpm. **DO NOT OVERDISPLACE**
- 4) WOC 8 hrs. ND BOP & cut casing to install tubing head.

Submit to Appropriate
District Office
State Lease - 4 copies
Fee Lease - 3 copies

DISTRICT I
P.O. Box 1980, Hobbs, NM 88240

DISTRICT II
P.O. Drawer DD, Artesia, NM 88210

DISTRICT III
1000 Rio Brazos Rd., Aztec, NM 87410

State of New Mexico
Energy, Minerals, and Natural Resources Department

Form C-102
Revised 1-1-89

OIL CONSERVATION DIVISION

P.O. Box 2088
Santa Fe, New Mexico 87504-2088

WELL LOCATION AND ACREAGE DEDICATION PLAT

All Distances must be from the outer boundaries of the section

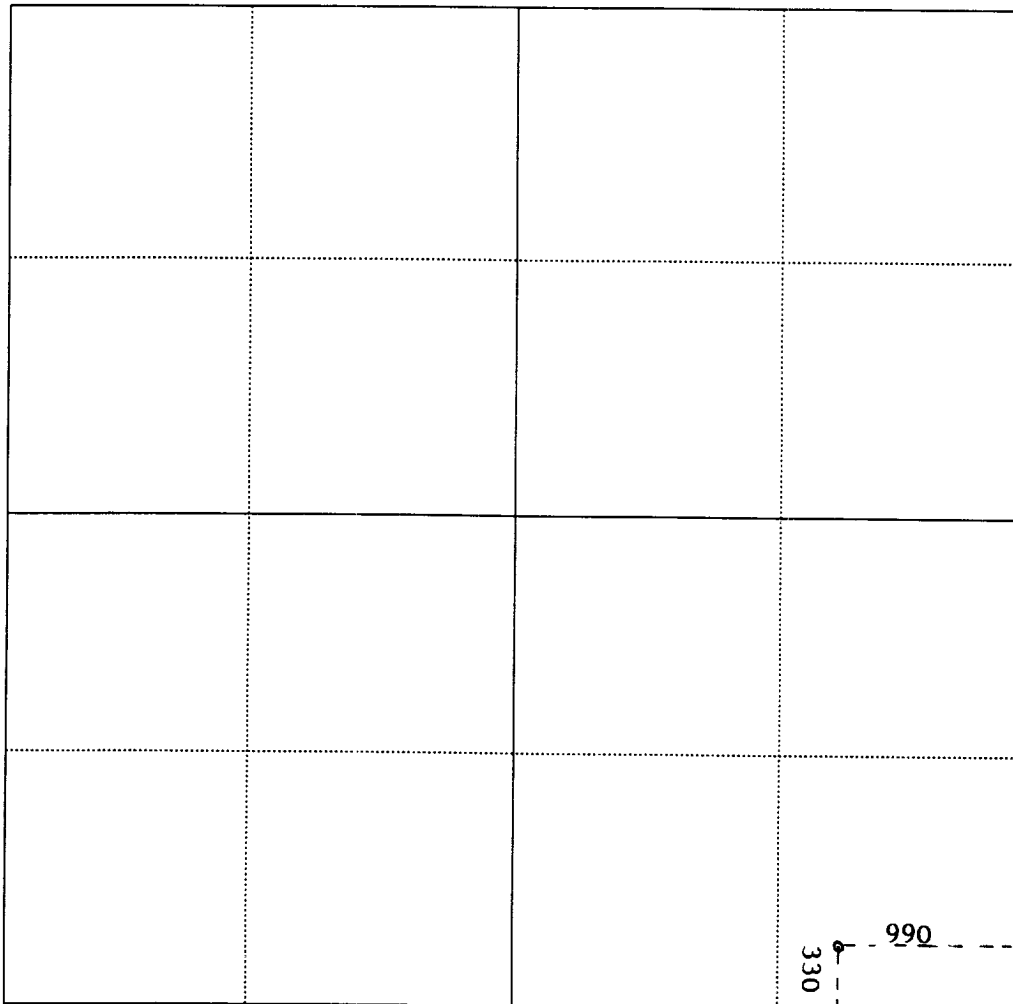
Operator MOBIL PRODUCING TX & NM INC.*MOBIL EXPLORATION & STATE K		Lease MOBIL EXPLORATION & STATE K		Well No. 12
Unit Lease P	Section 31	Township 17-S	Range 35-E	County LEA
Actual Footage Location of Well: 330 feet from the SOUTH line and 990 feet from the EAST line				
Ground level Elev. GL 3972	Producing Formation DRINKARD		Pool VACUUM	Dedicated Acreage: 40 Acres

1. Outline the acreage dedicated to the subject well by colored pencil or hachure on the plat below.
2. If more than one lease is dedicated to the well, outline each and identify the ownership thereof (both as to working interest and royalty).
3. If more than one lease of different ownership is dedicated to the well, have the interest of all owners been consolidated by communitization, unitization, force-pooling, etc.?

☐ Yes ☒ No If answer is "yes" type of consolidation _____

If answer is "no" list the owners and tract descriptions which have actually been consolidated. (Use reverse side of this form if necessary.)

No allowable will be assigned to the well until all interests have been consolidated. (by communitization, unitization, forced-pooling, or otherwise) or until a non-standard unit, eliminating such interest, has been approved by the Division.



OPERATOR CERTIFICATION

I hereby certify that the information contained herein is true and complete to the best of my knowledge and belief.

Signature

Kaye Pollock-Lyon

Printed Name

KAYE POLLOCK-LYON

Position

ENV & REG TECHNICIAN

Company

MOBIL PRODUCING TX & NM

Date

02-01-94

SURVEYOR CERTIFICATION

I hereby certify that the well location shown on this plat was plotted from field notes of actual surveys made by me or under my supervision, and that the same is true and correct to the best of my knowledge and belief.

Date Surveyed

01-19-94

Signature & Seal of

Professional Surveyor **For Signature and Seal, See attached**

Certificate No.

5109/J.N. NEWTON

Submit to Appropriate
District Office
State Lease - 4 copies
Fee Lease - 3 copies

State of New Mexico
Energy, Minerals and Natural Resources Department

Form C-102
Revised 1-1-89

OIL CONSERVATION DIVISION

P.O. Box 2088
Santa Fe, New Mexico 87504-2088

DISTRICT I
P.O. Box 1980, Hobbs, NM 88240

DISTRICT II
P.O. Drawer DD, Artesia, NM 88210

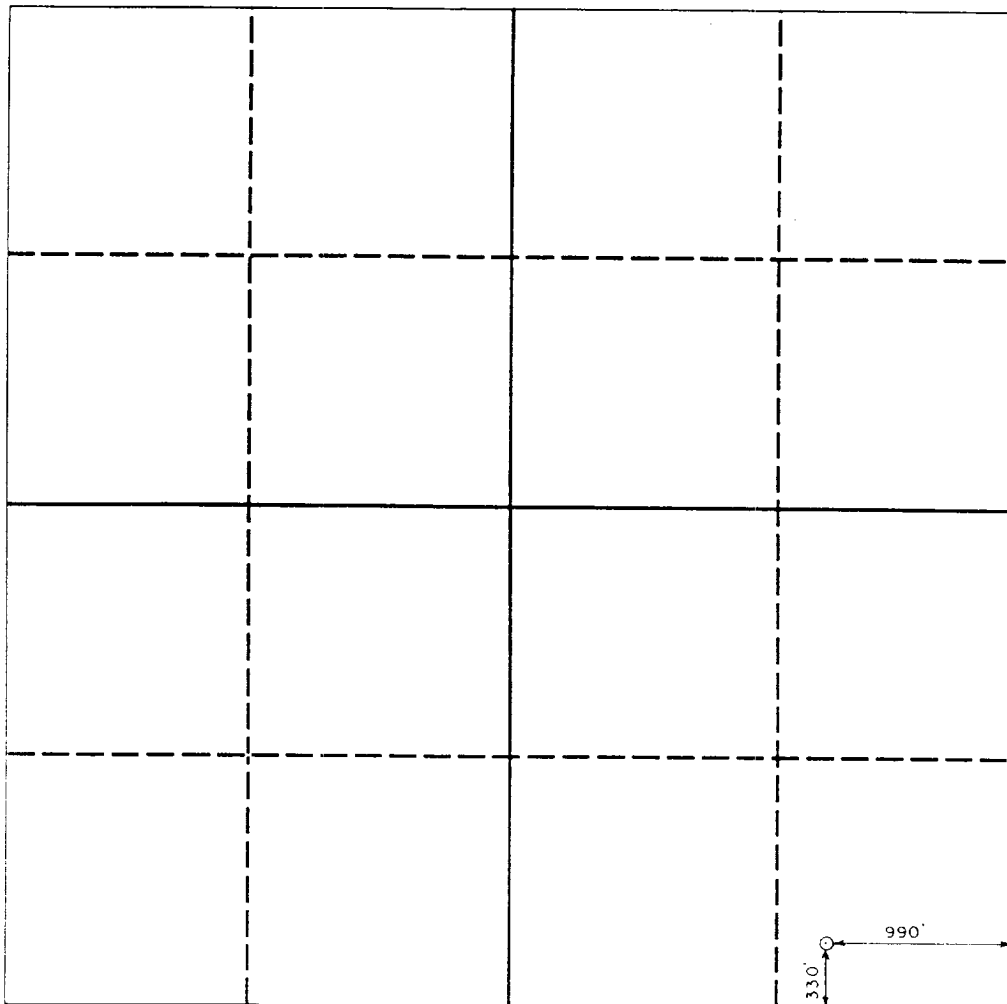
DISTRICT III
1000 Rio Brazos Rd., Aztec, NM 87410

WELL LOCATION AND ACREAGE DEDICATION PLAT

All Distances must be from the outer boundaries of the section

Operator Mobil Exploration & Producing, U.S.			Lease State "K"		Well No. 12
Unit Letter P	Section 31	Township 17-S	Range R-35	NMPM	County Lea
Actual Footage Location of Well: 330 feet from the South line and 990 feet from the East line					
Ground level Elev. 3972	Producing Formation Drinkard	Pool Vacuum	Dedicated Acreage: 40 Acres		

1. Outline the acreage dedicated to the subject well by colored pencil or hachure marks on the plat below.
2. If more than one lease is dedicated to the well, outline each and identify the ownership thereof (both as to working interest and royalty).
3. If more than one lease of different ownership is dedicated to the well, have the interest of all owners been consolidated by communitization, unitization, force-pooling, etc.?
☐ Yes ☐ No If answer is "yes" type of consolidation _____
If answer is "no" list the owners and tract descriptions which have actually been consolidated. (Use reverse side of this form if necessary). _____
No allowable will be assigned to the well until all interests have been consolidated (by communitization, unitization, forced-pooling, or otherwise) or until a non-standard unit, eliminating such interest, has been approved by the Division.



OPERATOR CERTIFICATION

I hereby certify that the information contained herein is true and complete to the best of my knowledge and belief.

Signature

Printed Name

Position

Company

Date

SURVEYOR CERTIFICATION

I hereby certify that the well location shown on this plat was plotted from field notes of actual surveys made by me or under my supervision, and that the same is true and correct to the best of my knowledge and belief.

Date Surveyed

January 19, 1994

Signature & Seal of
Professional Surveyor

Certificate No.

5109