

District I
PO Box 1980, Hobbs, NM 88241-1980
District II
PO Drawer DD, Artesia, NM 88211-0719
District III
1000 Rio Brazos Rd., Aztec, NM 87410
District IV
PO Box 2088, Santa Fe, NM 87504-2088

State of New Mexico
Energy, Minerals & Natural Resources Department

OIL CONSERVATION DIVISION
PO Box 2088
Santa Fe, NM 87504-2088

Form C-101

Revised February 10, 1994

Instructions on back

Submit to Appropriate District Office

State Lease - 6 Copies

Fee Lease - 5 Copies

☐ AMENDED REPORT

APPLICATION FOR PERMIT TO DRILL, RE-ENTER, DEEPEN, PLUGBACK, OR ADD A ZONE

Operator Name and Address. AnSon Gas Corporation P.O. Box 24060 Oklahoma City, Oklahoma 73124		OGRID Number 123139
Property Code 15550	Property Name Lea State	API Number 30-025-32648
		Well No. #1

Surface Location									
UL or lot no.	Section	Township	Range	Lot Ida	Feet from the	North/South line	Feet from the	East/West line	County
1	2	17S	37E		510'	South	2,130'	West	Lea

Proposed Bottom Hole Location If Different From Surface										
UL or lot no.	Section	Township	Range	Lot Ida	Feet from the	North/South line	Feet from the	East/West line	County	
Humble City					Proposed Pool 1 Strawn Lime					Proposed Pool 2 Atoka

Work Type Code N	Well Type Code O	Cable/Rotary R	Lease Type Code S	Ground Level Elevation
Multiple No	Proposed Depth 11,900'	Formation Strawn Lime	Contractor	Spud Date 9/29/94

Proposed Casing and Cement Program					
Hole Size	Casing Size	Casing weight/ft	Setting Depth	Sacks of Cement	Estimated TOC
17 1/2"	13 3/8"	54.5#/ft	450'	425 sx	Surface
12 1/4"	8 5/8"	32#/ft	4,500'	1,500 sx	Surface
7 7/8"	5 1/2"	17#/ft	11,750'	750 sx	8,000'

Describe the proposed program. If this application is to DEEPEN or PLUG BACK give the data on the present productive zone and proposed new productive zone. Describe the blowout prevention program, if any. Use additional sheets if necessary.

Drill a 17 1/2" hole to 450' and set 13 3/8" casing to protect near surface fresh water zones. Drill out with a 12 1/4" bit and set 8 5/8" intermediate casing to case off upper Permian salts and Anhydrites and to provide integrity in anticipation of drilling oil and gas bearing formations. Drill out with a 7 7/8" bit to evaluate Strawn Limestone with a total depth of 11,900'. The well will TD 250' into Atoka Shale where 5 1/2" casing will be run if warranted. Overpressured formations are not anticipated, however, surface blowout preventers will be utilized as a precaution.

I hereby certify that the information given above is true and complete to the best of my knowledge and belief.

Signature: *Craig Northcutt*
Printed name: Craig Northcutt
Title: Vice President

Date: August 23, 1994
Phone: (405) 528-0525

OIL CONSERVATION DIVISION

Approved by: Orig. Signed by
Paul Kantz
Title: Geologist

Approval Date: AUG 31 1994

Expiration Date:

Conditions of Approval:
Attached ☐

Permit Expires 6 Months From Approval
Date Unless Drilling Underway

C-101 Instructions

Measurements and dimensions are to be in feet/inches. Well locations will refer to the New Mexico Principal Meridian.

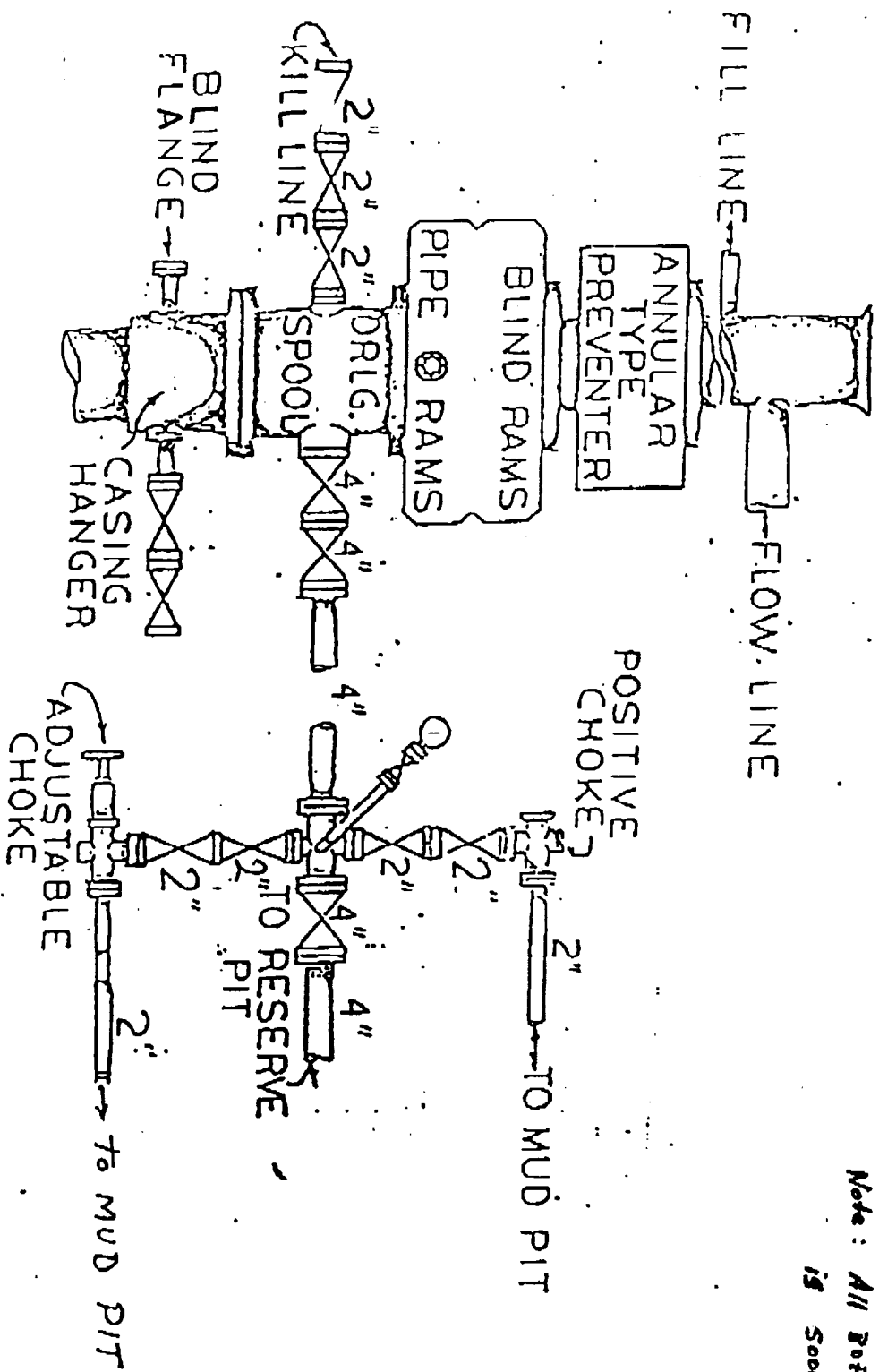
IF THIS IS AN AMENDED REPORT CHECK THE BOX LABELED "AMENDED REPORT" AT THE TOP OF THIS DOCUMENT.

- | | |
|---|--|
| <p>1 Operator's OGRID number. If you do not have one it will be assigned and filled in by the District office.</p> <p>2 Operator's name and address</p> <p>3 API number of this well. If this is a new drill the OCD will assign the number and fill this in.</p> <p>4 Property code. If this is a new property the OCD will assign the number and fill it in.</p> <p>5 Property name that used to be called 'well name'</p> <p>6 The number of this well on the property.</p> <p>7 The surveyed location of this well New Mexico Principal Meridian NOTE: If the United States government survey designates a Lot Number for this location use that number in the 'UL or lot no.' box. Otherwise use the OCD Unit Letter.</p> <p>8 The proposed bottom hole location of this well at TD</p> <p>9 and 10 The proposed pool(s) to which this well is being drilled.</p> <p>11 Work type code from the following table:
 N New well
 E Re-entry
 D Drill deeper
 P Plugback
 A Add a zone</p> <p>12 Well type code from the following table:
 O Single oil completion
 G Single gas completion
 M Multiple completion
 I Injection well
 S SWD well
 W Water supply well
 C Carbon dioxide well</p> <p>13 Cable or rotary drilling code
 C Propose to cable tool drill
 R Propose to rotary drill</p> <p>14 Lease type code from the following table:
 F Federal
 S State
 P Private
 N Navajo
 J Jicarilla
 U Ute
 I Other Indian tribe</p> <p>15 Ground level elevation above sea level</p> <p>16 Intend to multiple completions? Yes or No</p> <p>17 Proposed total depth of this well</p> | <p>18 Geologic formation at TD</p> <p>19 Name of the intended drilling company if known.</p> <p>20 Anticipated spud date.</p> <p>21 Proposed hole size ID inches, proposed casing OD inches, casing weight in pounds per foot, setting depth of the casing or depth and top of liner, proposed cementing volume, and estimated top of cement</p> <p>22 Brief description of the proposed drilling program and BOP program. Attach additional sheets if necessary.</p> <p>23 The signature, printed name, and title of the person authorized to make this report. The date this report was signed and the telephone number to call for questions about this report.</p> |
|---|--|

RECEIVED
JUL 24 1981
OFFICE

LEA STATE 2 #1 WELL
E/2 SW/4 Section 2-17S-37E
Lea County, New Mexico

All 300 Equipment
is 5000+ working pressure



RECEIVED
AUG 20 1904
OFFICE

DISTRICT I
P.O. Box 1980, Hobbs, NM 88240

DISTRICT II
P.O. Drawer DD, Artesia, NM 88210

DISTRICT III
1000 Rio Brazos Rd., Aztec, NM 87410

State of New Mexico
Energy, Minerals and Natural Resources Department

Form C-102
Revised February 10, 1994
Instruction on back
Submit to Appropriate District Office
State Lease - 4 Copies
Fee Lease - 3 Copies

OIL CONSERVATION DIVISION

P.O. Box 2088
Santa Fe, New Mexico 87504-2088

☐ AMENDED REPORT

WELL LOCATION AND ACREAGE DEDICATION PLAT

API Number 3D-025-32628	Pool Code 3349D	Pool Name Humble City Strawn
Property Code 1555D	Property Name LEA STATE	Well Number 1
OGRID No. 123139	Operator Name ANSON GAS CORPORATION	Elevation 3761'

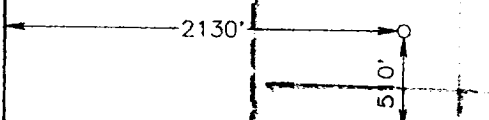
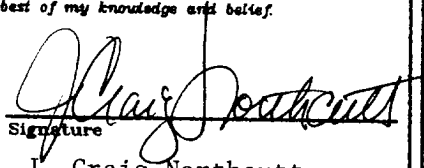
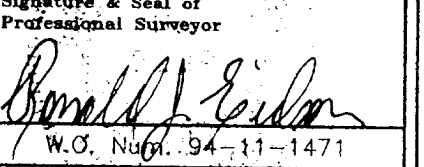
Surface Location

UL or lot No.	Section	Township	Range	Lot Idn	Feet from the	North/South line	Feet from the	East/West line	County
N	2	17 S	37 E		510	SOUTH	2130	WEST	LEA

Bottom Hole Location If Different From Surface

UL or lot No.	Section	Township	Range	Lot Idn	Feet from the	North/South line	Feet from the	East/West line	County
Dedicated Acres 8D	Joint or Infill	Consolidation Code	Order No.						

NO ALLOWABLE WILL BE ASSGND TO THIS COMPLETION UNTIL ALL INTERESTS HAVE BEEN CONSOLIDATED
OR A NON-STANDARD UNIT HAS BEEN APPROVED BY THE DIVISION

LOT 4	LOT 3	LOT 2	LOT 1
41.18	41.19	41.19	41.20
			
OPERATOR CERTIFICATION <i>I hereby certify the the information contained herein is true and complete to the best of my knowledge and belief.</i>  Signature J. Craig Northcutt Printed Name Vice President Title August 24, 1994 Date			
SURVEYOR CERTIFICATION <i>I hereby certify that the well location shown on this plat was plotted from field notes of actual surveys made by me or under my supervision, and that the same is true and correct to the best of my belief.</i> AUGUST 19, 1994 Date Surveyed  Signature & Seal of Professional Surveyor W.O. Num. 94-11-1471 Certificate No. JORN W. WEST, 676 RONALD J. EIDSON, 3239			

RECEIVED
AUG 26 1944
OFFICE

2.0/10/10

RECEIVED
AUG 26 1944
OFFICE