

DISTRICT I
P.O. Box 1980, Hobbs, NM 88240

State of New Mexico
Energy, Minerals and Natural Resources Department

Form C-102
Revised February 10, 1994
Instruction on back
Submit to Appropriate District Office
State Lease - 4 Copies
Fee Lease - 3 Copies

DISTRICT II
P.O. Drawer DD, Artesia, NM 88210

OIL CONSERVATION DIVISION

P.O. Box 2088
Santa Fe, New Mexico 87504-2088

DISTRICT III
1000 Rio Brazos Rd., Aztec, NM 87410

☐ AMENDED REPORT

WELL LOCATION AND ACREAGE DEDICATION PLAT

API Number 3D-025-32649	Pool Code 33480	Pool Name Humble City Wildcat -Atoka
Property Code 15551	Property Name SHIPP 15	Well Number 1
OGRID No. 123134	Operator Name ANSON GAS CORPORATION	Elevation 3750'

Surface Location

UL or lot No.	Section	Township	Range	Lot Idn	Feet from the	North/South line	Feet from the	East/West line	County
1	15	17 S	37 E		2310	SOUTH	410	EAST	LEA

Bottom Hole Location If Different From Surface

UL or lot No.	Section	Township	Range	Lot Idn	Feet from the	North/South line	Feet from the	East/West line	County
Dedicated Acres	Joint or Infill	Consolidation Code	Order No.						

NO ALLOWABLE WILL BE ASSIGNED TO THIS COMPLETION UNTIL ALL INTERESTS HAVE BEEN CONSOLIDATED
OR A NON-STANDARD UNIT HAS BEEN APPROVED BY THE DIVISION

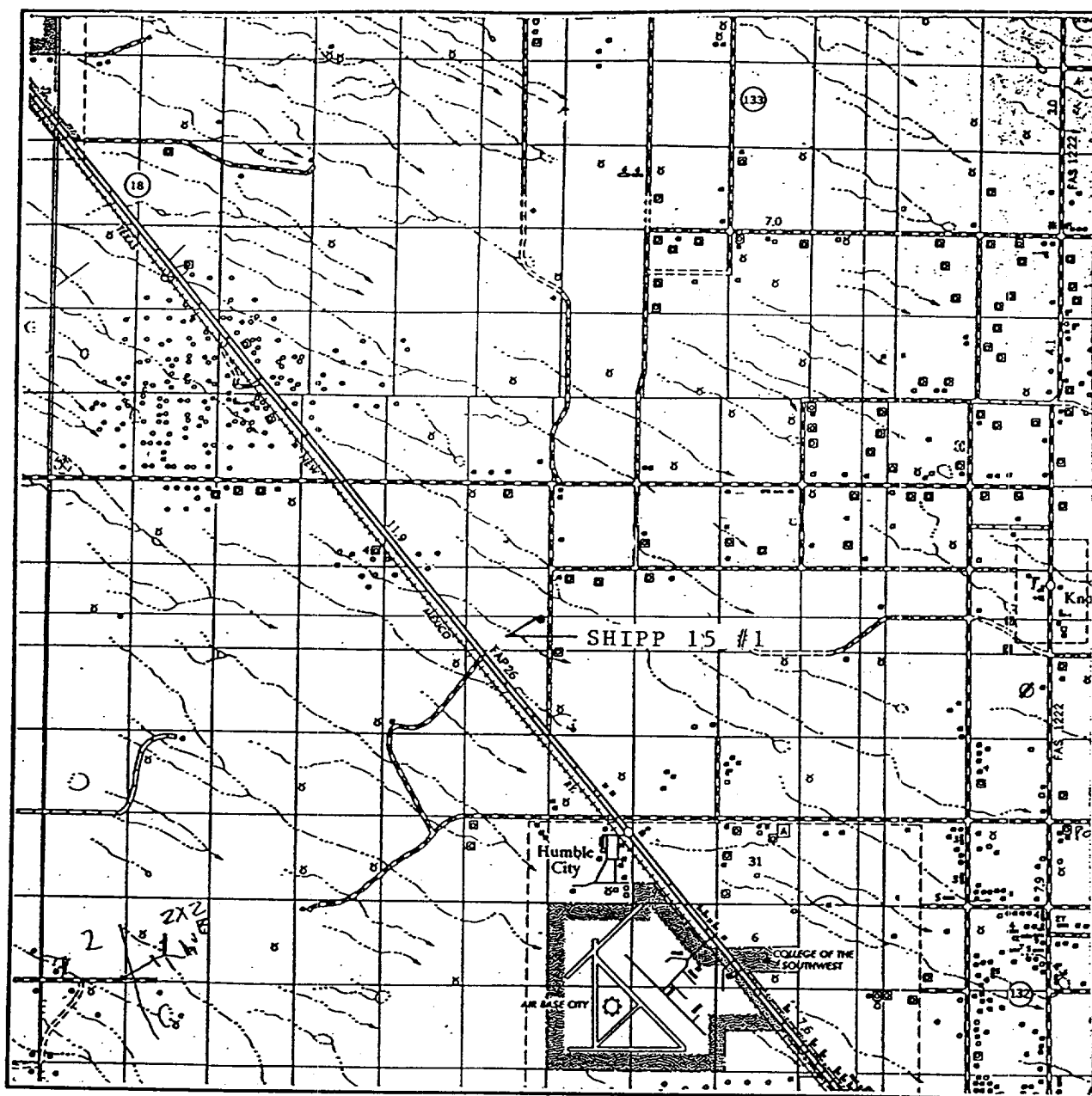
	OPERATOR CERTIFICATION I hereby certify the the information contained herein is true and complete to the best of my knowledge and belief. Signature J. Craig Northcutt Printed Name Vice President Title December 19, 1994 Date	
	SURVEYOR CERTIFICATION I hereby certify that the well location shown on this plat was plotted from field notes of actual surveys made by me or under my supervision, and that the same is true and correct to the best of my belief. DECEMBER 19, 1994 Date Surveyed Signature & Seal of Professional Surveyor 3239 W.O. No. 94-17-2127 Certificate No. J. JOHN W. WEST, 676 RONALD J. EIDSON, 3239	

RECEIVED

DEC 24 1994

O G D HOBBS
OFFICE

VICINITY MAP



SCALE: 1" = 2 MILES

SEC. 15 TWP. 17 S RGE. 37 E.

SURVEY N.M.P.M.

COUNTY Lea STATE N.M.

DESCRIPTION 2310' FSL & 410' FEL

ELEVATION 3750'

JOHN WEST ENGINEERING
HOBBS, NEW MEXICO
(505) 393-3117

OPERATOR Anson Gas Corporation

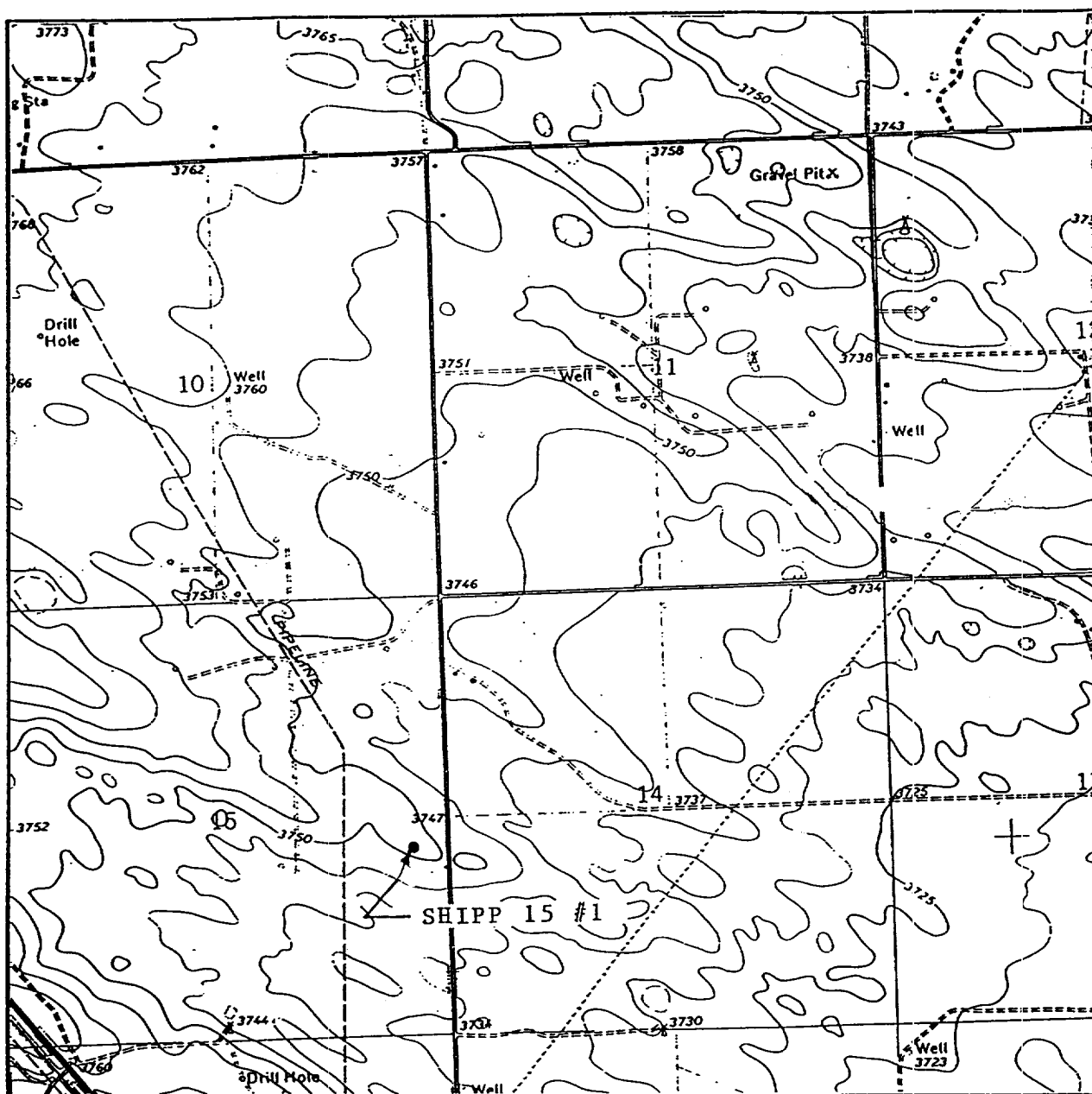
LEASE Shipp 15 #1

RECEIVED

DEC 20 1994

OCD HOBBS
OFFICE

LOCATION VERIFICATION MAP



SCALE: 1" = 2000'

CONTOUR INTERVAL 5'

SEC. 15 TWP. 17 S RGE. 37 E

SURVEY N.M.P.M.

COUNTY Lea STATE N.M.

DESCRIPTION 2310' FSL & 410' FEL

ELEVATION 3750'

OPERATOR Anson Gas Corporation

LEASE Shipp 15 #1

U.S.G.S. TOPOGRAPHIC MAP

HUMBLE CITY, N.M.

JOHN WEST ENGINEERING
HOBBS, NEW MEXICO
(505) 393-3117

RECEIVED

DEC 20 1994

U.S. DEPT. OF JUSTICE
HOBBS
OFFICE