

DISTRICT I
P.O. Box 1980, Hobbs, NM 88241-1980
DISTRICT II
P.O. Box Drawer DD, Artesia, NM 88211-0719
DISTRICT III
1000 Rio Brazos Rd., Aztec, NM 87410
DISTRICT IV
P.O. Box 2088, Santa Fe, NM 87504-2088

State of New Mexico
Energy, Minerals and Natural Resources Department

OIL CONSERVATION DIVISION

P.O. Box 2088
Santa Fe, New Mexico 87504-2088

Form C-101
Revised February 10, 1994
Instructions on back
Submit to Appropriate District Office
State Lease - 6 Copies
Fee Lease - 5 Copies
☐ AMENDED REPORT

APPLICATION FOR PERMIT TO DRILL, RE-ENTER, DEEPEN, PLUGBACK, OR ADD A ZONE

| | | |
|--|---|---|
| ¹ Operator Name and Address TEXACO EXPLORATION & PRODUCTION INC. 205 E. Bender, HOBBS, NM 88240 | | ² OGRID Number 022351 |
| ⁴ Property Code 011048 | ⁵ Property Name NEW MEXICO O STATE NCT- 1 | ³ API Number 30-025-33148 |
| | | ⁶ Well No. 38 |

| ⁷ Surface Location | | | | | | | | | |
|-------------------------------|---------|----------|-------|---------|---------------|------------------|---------------|----------------|--------|
| UI or lot no. | Section | Township | Range | Lot.Idn | Feet From The | North/South Line | Feet From The | East/West Line | County |
| I | 36 | 17-S | 34-E | | 2085 | SOUTH | 710 | EAST | LEA |

| ⁸ Proposed Bottom Hole Location If Different From Surface | | | | | | | | | |
|--|---------|----------|-------|---------|-------------------------------|------------------|---------------|----------------|--------|
| UI or lot no. | Section | Township | Range | Lot.Idn | Feet From The | North/South Line | Feet From The | East/West Line | County |
| ⁹ Proposed Pool 1 NORTH VACUUM ABO | | | | | ¹⁰ Proposed Pool 2 | | | | |

| | | | | |
|-------------------------------------|--|---|------------------------------------|--|
| ¹¹ Work Type Code P A | ¹² WellType Code O | ¹³ Rotary or C.T. ROTARY | ¹⁴ Lease Type Code S | ¹⁵ Ground Level Elevation 3987' GR |
| ¹⁶ Multiple No | ¹⁷ Proposed Depth 10965' | ¹⁸ Formation NORTH VACUUM ABO | ¹⁹ Contractor DAWSON | ²⁰ Spud Date 10/12/98 |

| ²¹ Proposed Casing and Cement Program | | | | | |
|--|----------------|-----------------|---------------|--------------------|----------|
| SIZE OF HOLE | SIZE OF CASING | WEIGHT PER FOOT | SETTING DEPTH | SACKS OF CEMENT | EST. TOP |
| 14 3/4 | 11 3/4 | 42# | 1503' | 800 SXS, CIRC 116 | |
| 11 3/4" | 8 5/8 | 32# | 5300' | 1700 SXS, CIRC 236 | |
| 7 7/8" | 5 1/2 | 17# | 11500' | 1900 SXS, CIRC 135 | |
| | | | | | |
| | | | | | |

²² Describe the proposed program. If this application is to DEEPEN or PLUG BACK give the data on the present productive zone and proposed new productive zone. Describe the blowout prevention program, if any. Use additional sheets if necessary.

TEXACO INTENDS TO RECOMPLETE THE SUBJECT WELL IN THE NORTH VACUUM ABO POOL & COMMINGLE THE PRODUCTION WITH THE EXISTING WOLFCAMP PRODUCTION. THIS WORKOVER WILL BE THE FIRST 40 ACRE INFILL WELL IN THE PRIMARY PRODUCING PORTION OF THE NORTH VACUUM ABO POOL. THE INTENDED PROCEDURE IS AS FOLLOWS:
MIRU pulling unit. TOH w/rds & pmp. NU BOP. TOH w/tbg. TIH w/bit & csg scraper to 10,965'. TIH w/RBP on tbg & set @ 9305'. Load csg w/2% KCL water & test plug to 500# surf press. TIH w/csg gun & perf 9140-9296'. TIH w/pkr on tbg. psa 9090'. Load backside & test pkr to 500#. Acidize perms w/7800 gals 15% NEFE HCL in 3 stgs w/1000# rk slt in gelled brine between each stage. Unset pkr & TOH w/tbg & pkr. TIH w/tbg. TIH w/rds & pmp. Place well on test.

*Permit Expires 10/14/1998
Don't Unless Filled in
Adding*

| | | | |
|--|--------------------|--|--|
| ²³ I hereby certify that the rules and regulations of the Oil Conservation Division have been complied with and that the information given above is true and complete to the best of my knowledge and belief. | | OIL CONSERVATION DIVISION | |
| Signature <i>J. Denise Leake</i> | | Approved By: <i>Orig. Signed by Paul Reutz Geologist</i> | |
| Printed Name J. Denise Leake | | Title: | |
| Title Engineering Assistant | | Approval Date: OCT 14 1998 Expiration Date: | |
| Date 10/5/98 | Telephone 397-0405 | Conditions of Approval: Attached <input type="checkbox"/> | |

DISTRICT I

P.O. Box 1980, Hobbs, NM 88241-1980

DISTRICT II

P.O. Box Drawer DD, Artesia, NM 88211-0719

DISTRICT III

1000 Rio Brazos Rd., Aztec, NM 87410

DISTRICT IV

P.O. Box 2088, Santa Fe, NM 87504-2088

State of New Mexico

Energy, Minerals and Natural Resources Department

OIL CONSERVATION DIVISION

P.O. Box 2088

Santa Fe, New Mexico 87504-2088

Form C-102

Revised February 10, 1994

Instructions on back

Submit to Appropriate District Office

State Lease - 4 Copies

Fee Lease - 3 Copies

☐ AMENDED REPORT

WELL LOCATION AND ACREAGE DEDICATION PLAT

| | | |
|---|--|--|
| ¹ API Number 30-025-33148 | ² Pool Code 61760 | ³ Pool Name NORTH VACUUM ABO |
| ⁴ Property Code 011048 | ⁵ Property Name NEW MEXICO O STATE NCT- 1 | ⁶ Well No. 38 |
| ⁷ OGRID Number 022351 | ⁸ Operator Name TEXACO EXPLORATION & PRODUCTION INC. | ⁹ Elevation 3987' GR |

¹⁰ Surface Location

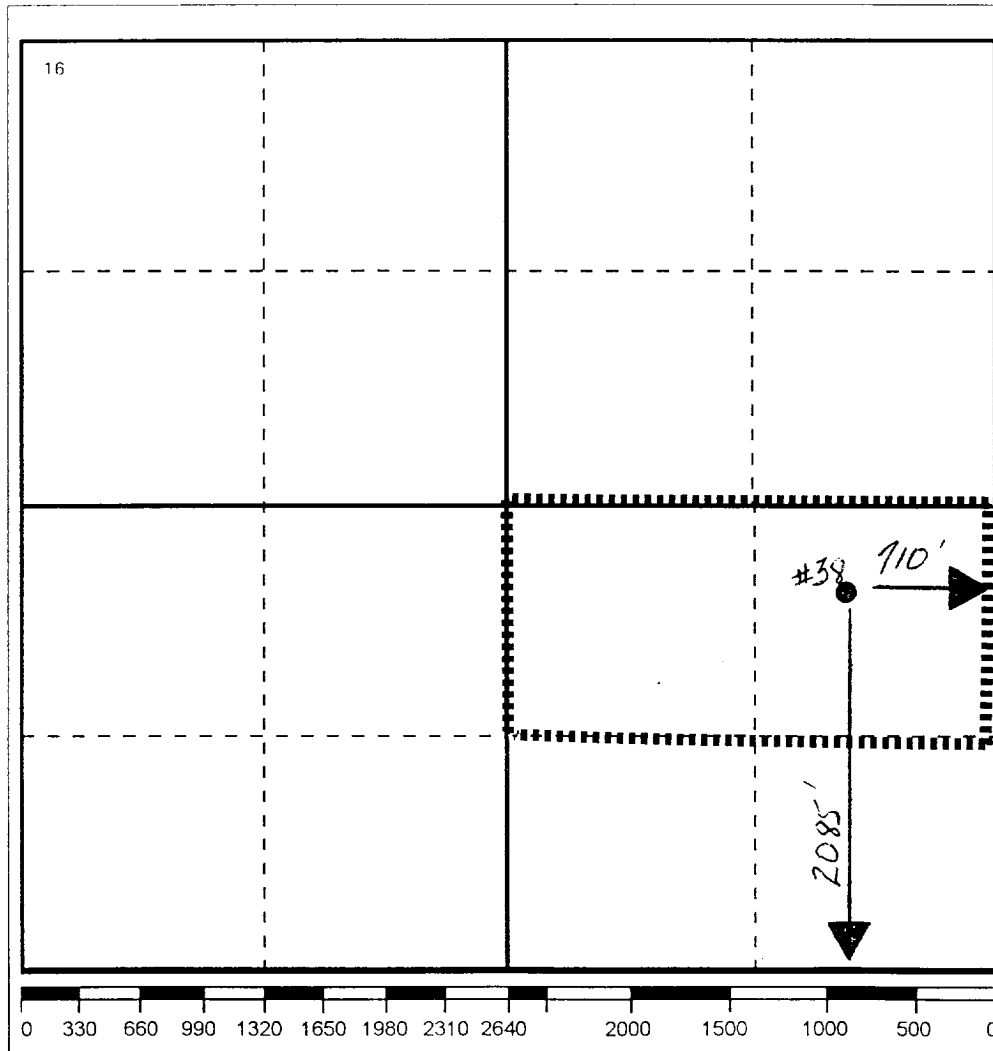
| UI or lot no. | Section | Township | Range | Lot.Idn | Feet From The | North/South Line | Feet From The | East/West Line | County |
|---------------|---------|----------|-------|---------|---------------|------------------|---------------|----------------|--------|
| I | 36 | 17-S | 34-E | | 2085 | SOUTH | 710 | EAST | LEA |

¹¹ Bottom Hole Location If Different From Surface

| UI or lot no. | Section | Township | Range | Lot.Idn | Feet From The | North/South Line | Feet From The | East/West Line | County |
|---------------|---------|----------|-------|---------|---------------|------------------|---------------|----------------|--------|
| | | | | | | | | | |

| | | | |
|-------------------------------------|-------------------------------------|----------------------------------|-------------------------|
| ¹² Dedicated Acres 80 | ¹³ Joint or Infill No | ¹⁴ Consolidation Code | ¹⁵ Order No. |
|-------------------------------------|-------------------------------------|----------------------------------|-------------------------|

NO ALLOWABLE WILL BE ASSIGNED TO THIS COMPLETION UNTIL ALL INTERESTS HAVE BEEN CONSOLIDATED
OR A NON-STANDARD UNIT HAS BEEN APPROVED BY THE DIVISION



17 OPERATOR CERTIFICATION

I hereby certify that the information contained herein is true and complete to the best of my knowledge and belief

Signature

J. Denise Leake

Printed Name

J. Denise Leake

Position

Engineering Assistant

Date

10/5/98

18 SURVEYOR CERTIFICATION

I hereby certify that the well location shown on this plat was plotted from field notes of actual surveys made by me or under my supervision, and that the same is true and correct to the best of my knowledge and belief.

Date Surveyed

Signature & Seal of
Professional Surveyor

Certificate No.