

**OIL CONSERVATION DIVISION**  
**P.O. Box 2088**  
**Santa Fe, NM 87504-2088**

District I  
PO Box 1984, Hobbs, NM 88241-1984  
District II  
PO Drawer DD, Artesia, NM 88211-4719  
District III  
1000 Rio Brazos Rd., Aztec, NM 87410  
District IV  
PO Box 2088, Santa Fe, NM 87504-2088

☐ AMENDED REPORT

**APPLICATION FOR PERMIT TO DRILL, RE-ENTER, DEEPEN, PLUGBACK, OR ADD A ZONE**

<sup>1</sup> Operator name and Address <b>Shell Western E&amp;P Inc.</b> <b>P.O. Box 576</b> <b>Houston, TX 77001</b>		<sup>2</sup> OGRID Number <b>020676</b>
<sup>4</sup> Property Code <b>18645</b>		<sup>3</sup> API Number <b>30-0 25-35367</b>
<sup>5</sup> Property Name <b>STATE RIDGE "B"</b>		<sup>6</sup> Well Number <b>1</b>

<sup>7</sup> Surface Location									
UL or lot no.	Section	Township	Range	Lot. Idn	Feet from the	North/South Line	Feet from the	East/West line	County
<b>I</b>	<b>30</b>	<b>17S</b>	<b>35E</b>		<b>2310'</b>	<b>SOUTH</b>	<b>990'</b>	<b>EAST</b>	<b>LEA</b>

<sup>8</sup> Proposed Bottom Hole Location If Different From Surface									
UL or lot no.	Section	Township	Range	Lot. Idn	Feet from the	North/South Line	Feet from the	East/West line	County

<sup>9</sup> Proposed Pool 1 <b>NORTH VACUUM ATOKA MORROW GAS POOL</b>	<sup>10</sup> Proposed Pool 2
---	-------------------------------

<sup>11</sup> Work Type Code <b>N</b>	<sup>12</sup> Well Type Code <b>G</b>	<sup>13</sup> Cable/Rotary <b>R</b>	<sup>14</sup> Lease Type Code <b>S</b>	<sup>15</sup> Ground Level Elevation <b>3979' GR</b>
<sup>16</sup> Multiple <b>NO</b>	<sup>17</sup> Proposed Depth <b>11,800'</b>	<sup>18</sup> Formations <b>ATOKA-MORROW</b>	<sup>19</sup> Contractor <b>NORTON DRILLING</b>	<sup>20</sup> Spud Date <b>3/17/96</b>

<sup>21</sup> Proposed Casing and Cement Program					
Hole Size	Casing Size	Casing weight/foot	Setting Depth	Sacks of Cement	Estimated TOC
<b>24"</b>	<b>20"</b>	<b>CONDUCTOR</b>	<b>40'</b>	<b>60</b>	<b>SURFACE</b>
<b>17-1/2"</b>	<b>13-3/8"</b>	<b>48#</b>	<b>1505'</b>	<b>1350</b>	<b>SURFACE</b>
<b>12-1/4"</b>	<b>9-5/8"</b>	<b>36#</b>	<b>3800'</b>	<b>1490</b>	<b>SURFACE</b>
<b>8-3/4"</b>	<b>7"</b>	<b>26# &amp; 29#</b>	<b>11,800'</b>	<b>1950</b>	<b>2300' FROM SURF.</b>

<sup>22</sup> Describe the proposed program. If this application is to DEEPEN or PLUG BACK give the data on the present productive zone and proposed new productive zone. Describe the blowout prevention program, if any. Use additional sheets if necessary.

PLANS ARE TO DRILL THIS WELL TO A TOTAL DEPTH OF 11,800'.  
BOP PROGRAM: 2000# RAM PREVENTER.

Permit Expires <sup>12</sup> 6 Months From Approval  
Date Unless Drilling Underway.

<sup>23</sup> I hereby certify that the information given above is true and complete to the best of my knowledge and belief.		<b>OIL CONSERVATION DIVISION</b>	
Signature: <i>Yvonne T. Iverson</i>		Approved by: <b>ORIGINAL SIGNED BY</b>	
Printed name: <b>YVONNE T. IVERSON</b>		Title: <b>DEPUTY WINK</b>	
Title: <b>LAND REPRESENTATIVE</b>		Approval Date: <b>MAR 05 1996</b>	
Date: <b>FEBRUARY 26, 1996</b>		Expiration Date:	
Phone: <b>(713) 544-3226</b>		Conditions of Approval:	
		Attached <input type="checkbox"/>	



542 - 10 - 11

DISTRICT I  
P.O. Box 1980, Hobbs, NM 88241-1980

State of New Mexico  
Energy, Minerals and Natural Resources Department

Form C-102  
Revised February 10, 1994  
Submit to Appropriate District Office  
State Lease - 4 Copies  
Fee Lease - 3 Copies

DISTRICT II  
P.O. Drawer DD, Artesia, NM 88211-0719

DISTRICT III  
1000 Rio Brazos Rd., Aztec, NM 87410

DISTRICT IV  
P.O. BOX 2088, SANTA FE, N.M. 87504-2088

OIL CONSERVATION DIVISION

P.O. Box 2088  
Santa Fe, New Mexico 87504-2088

☐ AMENDED REPORT

WELL LOCATION AND ACREAGE DEDICATION PLAT

API Number 51 825 8338	Pool Code 86800	Pool Name NORTH VACUUM ATOKA MORROW GAS POOL
Property Code 18645	Property Name STATE RIDGE "B"	Well Number 1
OGRID No. 020676	Operator Name SHELL WESTERN E & P INC.	Elevation 3979

Surface Location

UL or lot No. 1	Section 30	Township 17 S	Range 35 E	Lot Idn	Feet from the 2310	North/South line SOUTH	Feet from the 990	East/West line EAST	County LEA
--------------------	---------------	------------------	---------------	---------	-----------------------	---------------------------	----------------------	------------------------	---------------

Bottom Hole Location If Different From Surface

UL or lot No.	Section	Township	Range	Lot Idn	Feet from the	North/South line	Feet from the	East/West line	County
Dedicated Acres 320	Joint or Infill	Consolidation Code	Order No.						

NO ALLOWABLE WILL BE ASSIGNED TO THIS COMPLETION UNTIL ALL INTERESTS HAVE BEEN CONSOLIDATED  
OR A NON-STANDARD UNIT HAS BEEN APPROVED BY THE DIVISION

		ARCO	SHELL
		ARCO	TEXACO
		PHILLIPS	SHELL
		PHILLIPS	SHELL

990'

2310'

OPERATOR CERTIFICATION

I hereby certify the the information contained herein is true and complete to the best of my knowledge and belief.

*Yvonne T. Iverson*  
Signature  
YVONNE T. IVERSON  
Printed Name  
LAND REPRESENTATIVE  
Title  
2/26/96  
Date

SURVEYOR CERTIFICATION

I hereby certify that the well location shown on this plat was plotted from field notes of actual surveys made by me or under my supervision, and that the same is true and correct to the best of my belief.

FEBRUARY 07, 1996

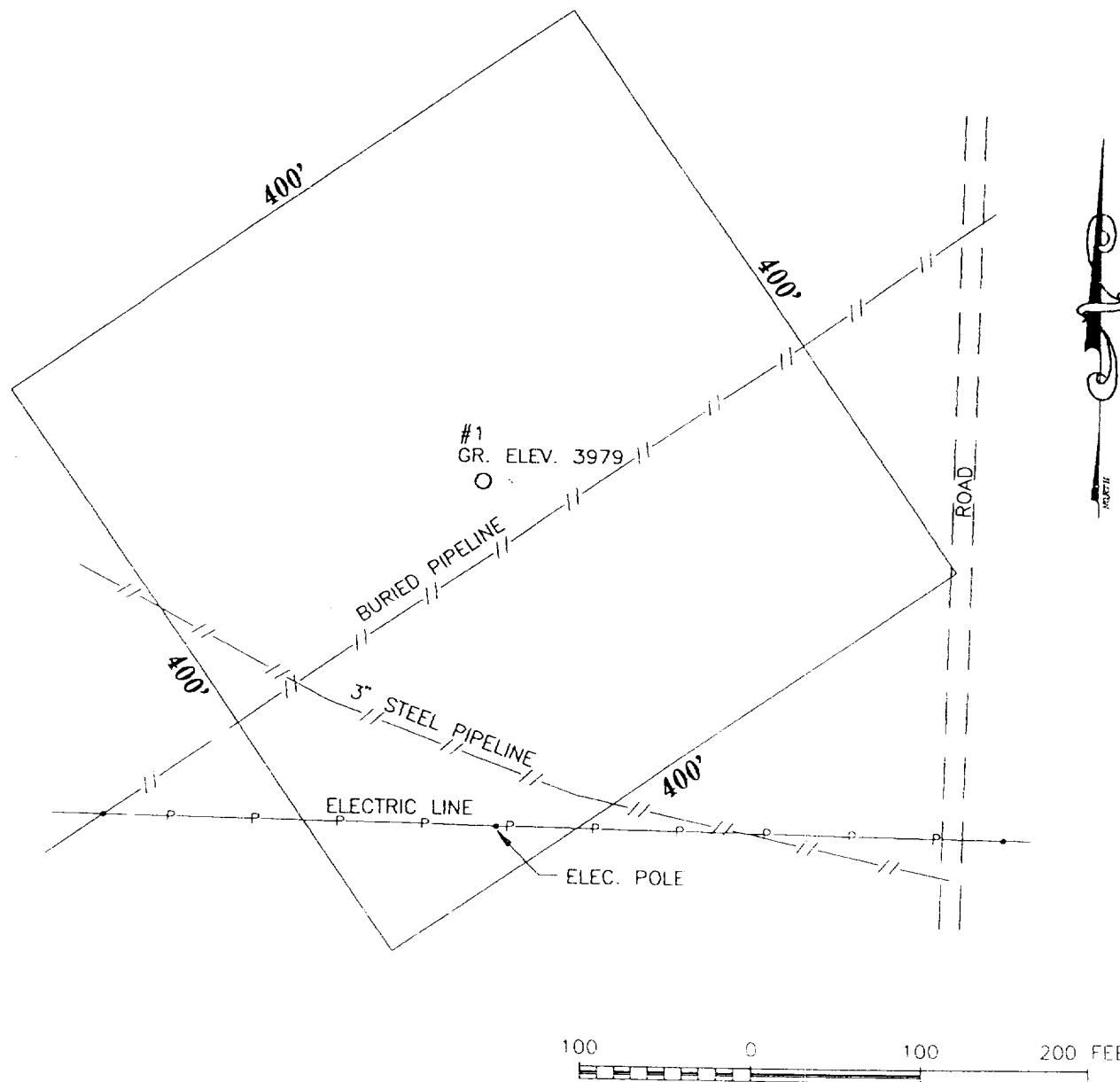
Date Surveyed SJJA

Signature of State of  
Professional Surveyor  
212-96  
W.O. Num. 96-10180

Certificate No. JOHN A. WEST 676  
RONALD J. EIDSON 3239  
CARL EIDSON 12641



**SECTION 30, TOWNSHIP 17 SOUTH, RANGE 35 EAST, N.M.P.M.**  
**LEA COUNTY, NEW MEXICO.**



**SHELL WESTERN E. & P. INC.**

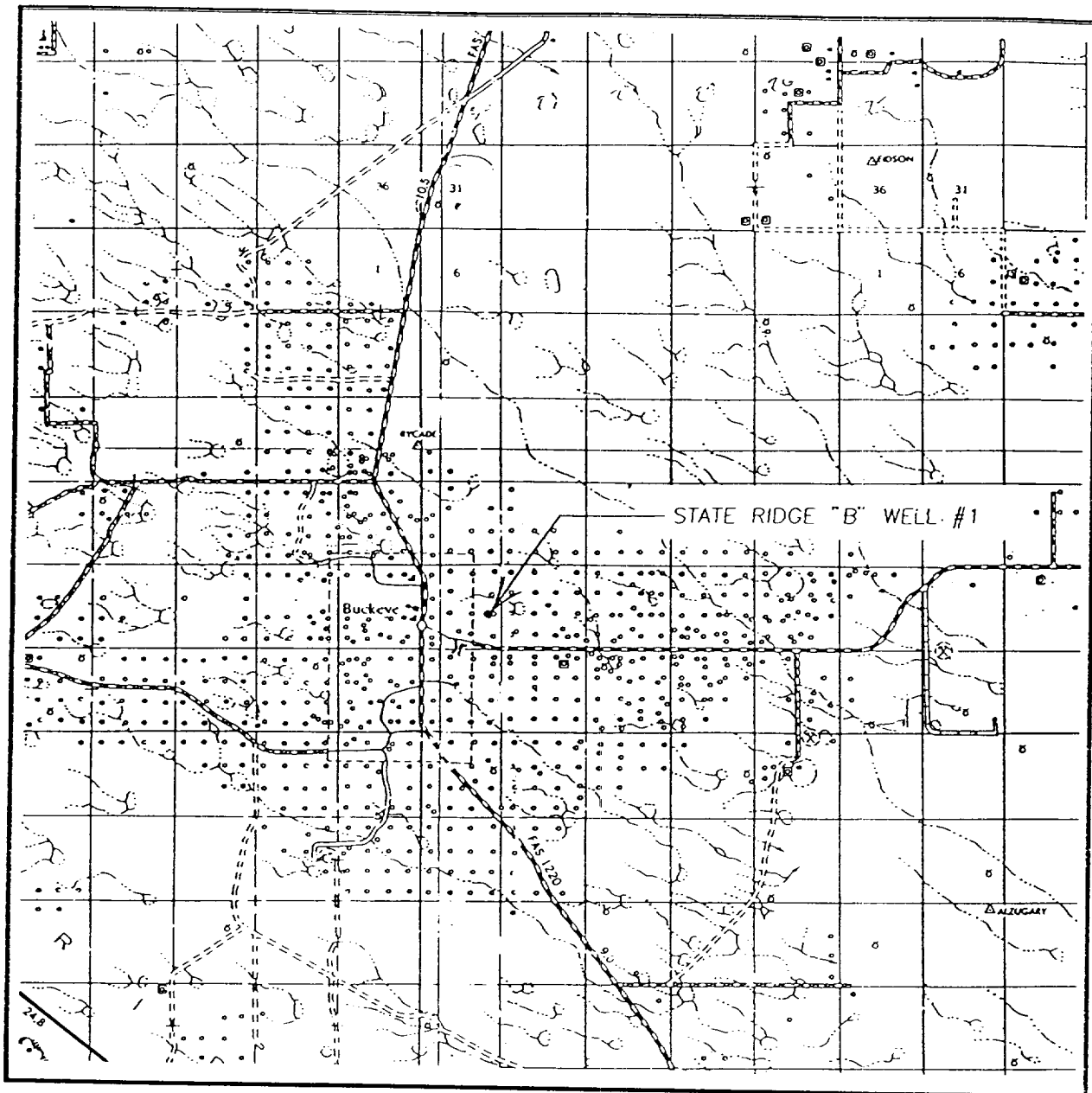
STATE RIDGE "B" WELL #1  
 LOCATED 2310 FEET FROM THE SOUTH LINE  
 AND 990 FEET FROM THE EAST LINE OF SECTION 30,  
 TOWNSHIP 17 SOUTH, RANGE 35 EAST, N.M.P.M.,  
 LEA COUNTY, NEW MEXICO

Survey Date: 2-07-1996	Sheet 1 of 1 Sheets
W.O. Number: 96-11-0180	Drawn By: SJA
Date: 2-12-96	96110180 DISK: SJA #26 Scale 1" = 100'

JOHN W. WEST ENGINEERING COMPANY  
 CONSULTING ENGINEERS & SURVEYORS - HOBBS, NEW MEXICO



# VICINITY MAP



SCALE: 1" = 2 MILES

SEC. 30 TWP. 17-S RGE. 35-E

SURVEY N.M.P.M.

COUNTY LEA

DESCRIPTION 2310' FSL & 990' FEL

ELEVATION 3979

OPERATOR SHELL WESTERN E. & P. INC

LEASE STATE RIDGE "B"

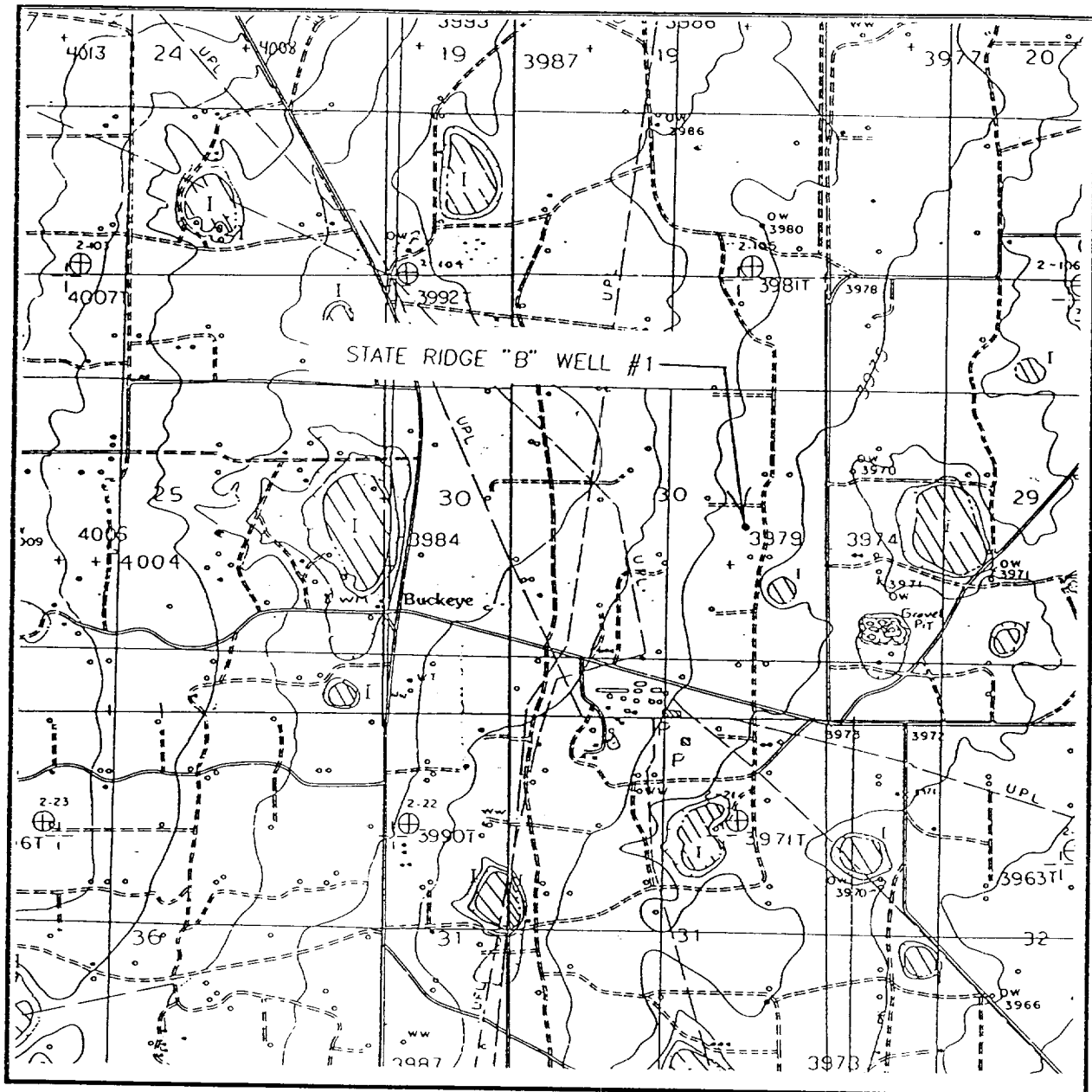
**JOHN WEST ENGINEERING  
HOBBS, NEW MEXICO**

**(505) 393-3117**





# LOCATION VERIFICATION MAP



SCALE: 1" = 2000'

CONTOUR INTERVAL - 5'

SEC. 30 TWP. 17-S RGE. 35-E

SURVEY N.M.P.M.

COUNTY LEA

DESCRIPTION 2310' FSL & 990' FEL

ELEVATION 3979

OPERATOR SHELL WESTERN E. & P. INC

LEASE STATE RIDGE "B"

U.S.G.S. TOPOGRAPHIC MAP

LOVINGTON S.W. BUCKEYE N.M.

**JOHN WEST ENGINEERING**  
**HOBBS, NEW MEXICO**  
**(505) 393-3117**

00/03/1

