

**OIL CONSERVATION DIVISION**  
**P.O. Box 2088**  
**Santa Fe, NM 87504-2088**

Instructions on back  
Submit to Appropriate District Office  
State Lease - 6 Copies  
Fee Lease - 5 Copies

District I  
PO Box 1988, Hobbs, NM 88241-1988  
District II  
PO Drawer DD, Artesia, NM 88211-8719  
District III  
1000 Rio Bravo Rd., Aztec, NM 87410  
District IV  
PO Box 2088, Santa Fe, NM 87504-2088

☐ AMENDED REPORT

**APPLICATION FOR PERMIT TO DRILL, RE-ENTER, DEEPEN, PLUGBACK, OR ADD A ZONE**

<sup>1</sup> Operator name and Address <b>Phillips Petroleum Company</b> <b>4001 Penbrook Street</b> <b>Odessa, TX 797962</b>		<sup>2</sup> OGRID Number <b>017643</b>
<sup>4</sup> Property Code <b>009099</b>		<sup>5</sup> Property Name <b>HALE, M. E.</b>
		<sup>3</sup> API Number <b>30-025-33419</b>
		<sup>6</sup> Well Number <b>027</b>

<sup>7</sup> Surface Location									
UL or lot no.	Section	Township	Range	Lot. Idn	Feet from the	North/South Line	Feet from the	East/West line	County
<b>I</b>	<b>35</b>	<b>17-S</b>	<b>34-E</b>		<b>2600'</b>	<b>SOUTH</b>	<b>660'</b>	<b>EAST</b>	<b>LEA</b>

<sup>8</sup> Proposed Bottom Hole Location If Different From Surface									
UL or lot no.	Section	Township	Range	Lot. Idn	Feet from the	North/South Line	Feet from the	East/West line	County

<sup>9</sup> Proposed Pool 1					<sup>10</sup> Proposed Pool 2				
<b>VACUUM GRAYBURG/SAN ANDRES</b>					<b>VACUUM GRAYBURG/SAN ANDRES</b>				

<sup>11</sup> Work Type Code <b>N</b>	<sup>12</sup> Well Type Code <b>0</b>	<sup>13</sup> Cable/Rotary <b>R</b>	<sup>14</sup> Lease Type Code <b>S</b>	<sup>15</sup> Ground Level Elevation <b>4008' GR.</b>
<sup>16</sup> Multiple	<sup>17</sup> Proposed Depth <b>5,000'</b>	<sup>18</sup> Formations <b>GB/SA</b>	<sup>19</sup> Contractor	<sup>20</sup> Spud Date <b>UPON APPROVAL</b>

<sup>21</sup> Proposed Casing and Cement Program

Hole Size	Casing Size	Casing weight/foot	Setting Depth	Sacks of Cement	Estimated TOC
<b>12-1/4"</b>	<b>8-5/8"</b>	<b>24#, J-55</b>	<b>1,600'</b>	<b>600 SXS</b>	<b>SURFACE</b>
<b>7-7/8"</b>	<b>5-1/2"</b>	<b>15.5#, J-55</b>	<b>5,000'</b>	<b>1000 SXS</b>	<b>SURFACE</b>

<sup>22</sup> Describe the proposed program. If this application is to DEEPEN or PLUG BACK give the data on the present productive zone and proposed new productive zone. Describe the blowout prevention program, if any. Use additional sheets if necessary

USE APPROPRIATE BOP FOR CONTROL  
SEE ATTACHED CASING AND CEMENTING PROGRAM  
SEE ATTACHED MUD PROGRAM

Permit Expires 1 Year From Approval  
Date Unless Drilling Underway

NOTE: AFTER UNITAZATION THIS WELL WILL BECOME:

STATE 35 UNIT WELL NO. 18

NOTE: UNORTHODOX LOCATION TO COMPLETE AN EFFICIENT PRODUCTION AND INJECTION PATTERN  
WITHIN A SECONDARY RECOVERY PROJECT.

<sup>23</sup> I hereby certify that the information given above is true and complete to the best of my knowledge and belief.

Signature: *Larry M. Sanders*

Printed name: **Larry M. Sanders**

Title: **Senior Regulation Analyst**

Date: **05/02/96**

Phone: **(915) 368-1488**

**OIL CONSERVATION DIVISION**

Approved by: **BRIGITTE L. JONES, DEPUTY DIVISION**

Title:

Approval Date: **MAY 06 1996**

Expiration Date:

Conditions of Approval:

Attached ☐

DISTRICT I  
P.O. Box 1980, Hobbs, NM 88241-1980

State of New Mexico  
Energy, Minerals and Natural Resources Department

Form C-102  
Revised February 10, 1994  
Submit to Appropriate District Office  
State Lease - 4 Copies  
Fee Lease - 3 Copies

DISTRICT II  
P.O. Drawer DD, Artesia, NM 88211-0719

DISTRICT III  
1000 Rio Brazos Rd., Aztec, NM 87410

DISTRICT IV  
P.O. BOX 2088, SANTA FE, N.M. 87504-2088

OIL CONSERVATION DIVISION  
P.O. Box 2088  
Santa Fe, New Mexico 87504-2088

☐ AMENDED REPORT

WELL LOCATION AND ACREAGE DEDICATION PLAT

API Number <b>30-025-33419</b>	Pool Code <b>62180</b>	Pool Name <b>VACUUM GRAYBURG/SAN ANDRES</b>
Property Code <b>009099</b>	Property Name <b>HALE, M. E.</b>	Well Number <b>027</b>
OGRID No. <b>017643</b>	Operator Name <b>PHILLIPS PETROLEUM CO.</b>	Elevation <b>4008</b>

Surface Location

UL or lot No.	Section	Township	Range	Lot Idn	Feet from the	North/South line	Feet from the	East/West line	County
<b>1</b>	<b>35</b>	<b>17 S</b>	<b>34 E</b>		<b>2600</b>	<b>SOUTH</b>	<b>660</b>	<b>EAST</b>	<b>LEA</b>

Bottom Hole Location If Different From Surface

UL or lot No.	Section	Township	Range	Lot Idn	Feet from the	North/South line	Feet from the	East/West line	County
Dedicated Acres <b>40 Ac.</b>	Joint or Infill	Consolidation Code	Order No.						

NO ALLOWABLE WILL BE ASSIGNED TO THIS COMPLETION UNTIL ALL INTERESTS HAVE BEEN CONSOLIDATED  
OR A NON-STANDARD UNIT HAS BEEN APPROVED BY THE DIVISION

D	C	B	A
E	F	G	H
L	K	J	I
M	N	O	P

Diagram showing well location and acreage dedication plat. The plat is divided into sections A through P. A well location is marked with a circle and labeled 'J'. Dimensions are indicated: 660' and 2600'.

**OPERATOR CERTIFICATION**

I hereby certify the the information contained herein is true and complete to the best of my knowledge and belief.

*L. M. Sanders*  
Signature

**L. M. Sanders**  
Printed Name

**Sr. Regulation Analyst**  
Title

**05/02/96**  
Date

**SURVEYOR CERTIFICATION**

I hereby certify that the well location shown on this plat was plotted from field notes of actual surveys made by me or under my supervision, and that the same is true and correct to the best of my belief.

**APRIL 3, 1996**

Date Surveyed **DMCC**

Signature & Seal of Professional Surveyor  
*Ronald E. Edson*  
**4-05-96**  
**06-11-0405**

Certificate No. **JOHN W. WEST 676**  
**RONALD E. EIDSON 3239**  
**GARY EIDSON 12641**

DISTRICT I  
P.O. Box 1980, Hobbs, NM 88241-1980

DISTRICT II  
P.O. Drawer DD, Artesia, NM 88211-0719

DISTRICT III  
1000 Rio Brazos Rd., Aztec, NM 87410

DISTRICT IV  
P.O. BOX 2086, SANTA FE, N.M. 87504-2086

State of New Mexico  
Energy, Minerals and Natural Resources Department

Form C-102  
Revised February 10, 1994  
Submit to Appropriate District Office  
State Lease - 4 Copies  
Fee Lease - 3 Copies

OIL CONSERVATION DIVISION  
P.O. Box 2088  
Santa Fe, New Mexico 87504-2088

☐ AMENDED REPORT

WELL LOCATION AND ACREAGE DEDICATION PLAT

API Number	Pool Code 62180	Pool Name VACUUM GRAYBURG/SAN ANDRES
Property Code 009099	Property Name HALE, M. E.	Well Number 027
OGRID No. 017643	Operator Name PHILLIPS PETROLEUM CO.	Elevation 4008

Surface Location

UL or lot No.	Section	Township	Range	Lot Idn	Feet from the	North/South line	Feet from the	East/West line	County
I	35	17 S	34 E		2600	SOUTH	660	EAST	LEA

Bottom Hole Location If Different From Surface

UL or lot No.	Section	Township	Range	Lot Idn	Feet from the	North/South line	Feet from the	East/West line	County
Dedicated Acres 40 Ac.	Joint or Infill	Consolidation Code	Order No.						

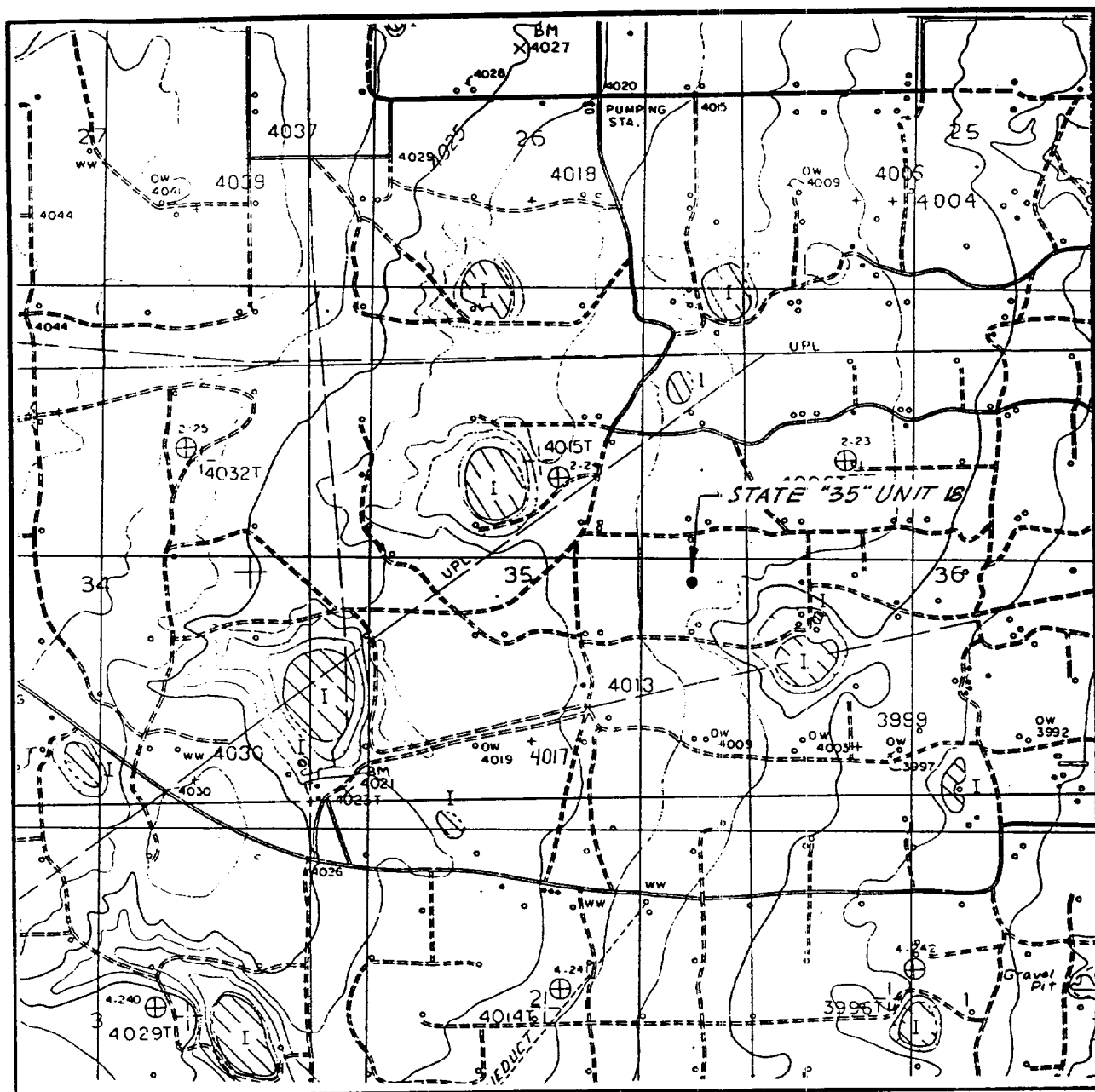
NO ALLOWABLE WILL BE ASSIGNED TO THIS COMPLETION UNTIL ALL INTERESTS HAVE BEEN CONSOLIDATED  
OR A NON-STANDARD UNIT HAS BEEN APPROVED BY THE DIVISION

D	C	B	A
E	F	G	H
L	K	J	I
M	N	O	P

ST-H 35-#1  
ST-H 35-#9  
747.9'  
733.2'  
702.9'  
670.3'  
620.6'  
M.E. HALE CO-OP WI #16  
VAC CO-OP INJ. #160  
M.E. HALE #1

**OPERATOR CERTIFICATION**  
I hereby certify the the information contained herein is true and complete to the best of my knowledge and belief.  
Signature  
L. M. Sanders  
Printed Name  
Sr. Regulation Analyst  
Title  
05/02/96  
Date

**SURVEYOR CERTIFICATION**  
I hereby certify that the well location shown on this plat was plotted from field notes of actual surveys made by me or under my supervision, and that the same is true and correct to the best of my belief.  
APRIL 3, 1996  
Date Surveyed  
DMCC  
Signature & Seal of Professional Surveyor  
Certificate No. JOHN W. WEST 676  
RONALD J. EIDSON 3239  
GARY EIDSON 12641

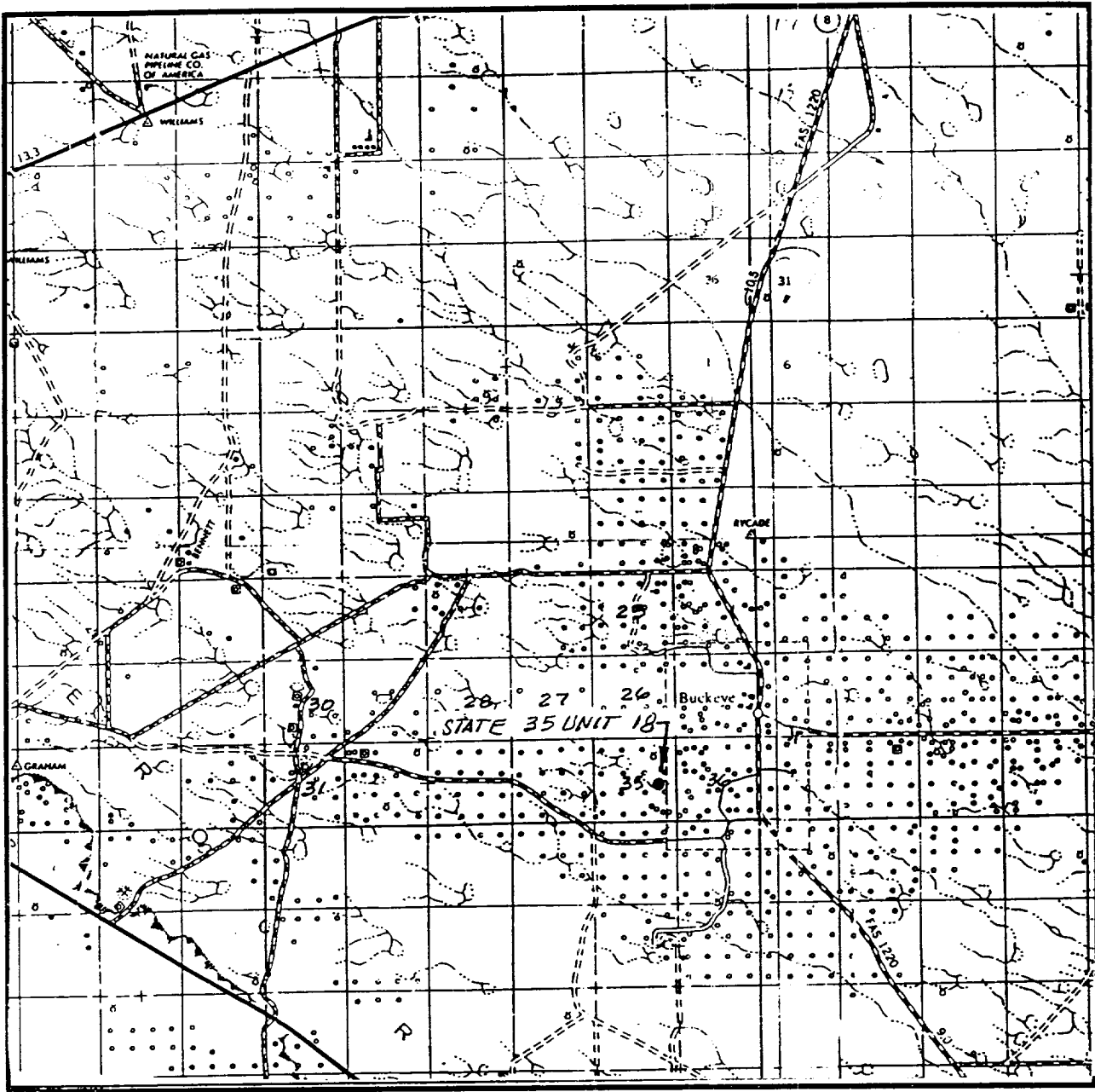


CONTOUR INTERVAL:  
BUCKEYE - 5'

BUCKEYE, N.M.

**JOHN WEST ENGINEERING  
HOBBS, NEW MEXICO  
(505) 393-3117**

# VICINITY MA.



SCALE: 1" = 2 MILES

SEC. 35 TWP. 17-S RGE. 34-E

SURVEY N.M.P.M.

COUNTY LEA

DESCRIPTION 2600' FSL & 660' FEL

ELEVATION 4008

OPERATOR PHILLIPS PETROLEUM CO.

LEASE STATE "35" UNIT

**JOHN WEST ENGINEERING  
HOBBS, NEW MEXICO**

**(505) 393-3117**

## CASING & CEMENTING PROGRAM

### HALE, M.E. WELL NO. 27

#### 8 5/8" 24 lb/ft J-55 Surface Casing Set at 1600' - 12 1/4" Hole:

Lead: 450 sx Class "C" + 4% Gel + 2% CaCl<sub>2</sub>.  
Desired TOC = Surface.

Slurry Weight:	13.5 ppg
Slurry Yield:	1.72 ft <sup>3</sup> /sx
Water Requirement:	9.06 gals/sx

Tail: 150 sx Class "C" + 2% CaCl<sub>2</sub>.  
Desired TOC = 1300'.

Slurry Weight:	14.8 ppg
Slurry Yield:	1.32 ft <sup>3</sup> /sx
Water Requirement:	6.3 gals/sx

#### 5 1/2" 15.5 lb/ft J-55 Production Casing Set at 5000' - 7 7/8" Hole:

Lead: 750 sx Class "C" + Econolite + 3% Salt.  
Desired TOC = Surface.

Slurry Weight:	11.80 ppg
Slurry Yield:	2.60 ft <sup>3</sup> /sx
Water Requirement:	15.60 gals/sx

Tail: 250 sx Class "C" + 50 lbs Pozmix + 7% CalSeal + 3% Salt +  
0.5% Diacel FL + 0.5% CFR-3 + 0.5% Econolite.

Desired TOC = 4000'.

Slurry Weight:	15.00 ppg
Slurry Yield:	1.16 ft <sup>3</sup> /sx
Water Requirement:	4.77 gals/sx

## Attachment II

### MUD PROGRAM

STATE H-35 WELL NOS. ( 16, 17)  
HALE, M.E. WELL NOS. ( 24, 25, 26, 27)

DEPTH	MUD WEIGHT	VISCOSITY	FLUID LOSS	CL PPM	% SOLIDS	ADDITIVES
Surf. - 1600'	8.3 - 9.0 ppg	28 - 36 sec/1000 cc	N/C	-	-	Native Solids
1600' - 4000'	10.0 ppg	28 - 32 sec/1000 cc	N/C	Saturated	-	Native Solids
4000' - TD	10.0 - 10.2 ppg	32 - 36 sec/1000 cc	20 cc	Saturated	-	Starch/Drispac+

The Mud Engineer shall include on each test report the materials used for the previous 24 hour period. Daily fax the test reports to (915) 368-1507 Attn: J.C. Shoumaker / L.E. Robinson.

Send two copies of the Well Recap (Final Cost & Engineering Summaries) to Phillips Petroleum Company , Attn: J.C. Shoumaker / L.E. Robinson, 4001 Penbrook, Odessa, Texas 79762

96/12/16  
EAT