

OIL CONSERVATION DIVISION
P.O. Box 2088
Santa Fe, NM 87504-2088

Instructions on back
Submit to Appropriate District Office
State Lease - 6 Copies
Fee Lease - 5 Copies

District I
PO Box 1988, Hobbs, NM 88241-1988
District II
PO Drawer DD, Artesia, NM 88211-0719
District III
1000 Rio Brumas Rd., Aztec, NM 87410
District IV
PO Box 2088, Santa Fe, NM 87504-2088

☐ AMENDED REPORT

APPLICATION FOR PERMIT TO DRILL, RE-ENTER, DEEPEN, PLUGBACK, OR ADD A ZONE

¹ Operator name and Address Phillips Petroleum Company 4001 Penbrook Street Odessa, TX 797962		² OGRID Number 017643
⁴ Property Code 017021		³ API Number 30-0 25-33489
⁵ Property Name STATE H-35		⁶ Well Number 016

⁷ Surface Location									
UL or lot no.	Section	Township	Range	Lot. Idn	Feet from the	North/South Line	Feet from the	East/West line	County
A	35	17-S	34-E		1120'	NORTH	660'	EAST	LEA

⁸ Proposed Bottom Hole Location If Different From Surface									
UL or lot no.	Section	Township	Range	Lot. Idn	Feet from the	North/South Line	Feet from the	East/West line	County
A	35	17-S	34-E		1310'	NORTH	660'	EAST	LEA
⁹ Proposed Pool 1 VACUUM GRAYBURG/SAN ANDRES					¹⁰ Proposed Pool 2 VACUUM GRAYBURG/SAN ANDRES				

¹¹ Work Type Code N	¹² Well Type Code 0	¹³ Cable/Rotary R	¹⁴ Lease Type Code S	¹⁵ Ground Level Elevation 4010' GR
¹⁶ Multiple	¹⁷ Proposed Depth 5,000'	¹⁸ Formations GR/SA	¹⁹ Contractor	²⁰ Spud Date UPON APPROVAL

²¹ Proposed Casing and Cement Program					
Hole Size	Casing Size	Casing weight/foot	Setting Depth	Sacks of Cement	Estimated TOC
12-1/4"	8-5/8"	24#, J-55	1,600'	600 SXS	SURFACE
7-7/8"	5-1/2"	15.5#, J-55	5,000'	1000 SXS	SURFACE

²² Describe the proposed program. If this application is to DEEPEN or PLUG BACK give the data on the present productive zone and proposed new productive zone. Describe the blowout prevention program, if any. Use additional sheets if necessary

USE APPROPRIATE BOP FOR CONTROL
SEE ATTACHED CASING AND CEMENTING PROGRAM
SEE ATTACHED MUD PROGRAM

NOTE: AFTER UNITIZATION THIS WELL WILL BECOME:
STATE 35 UNIT WELL NO. 8

NOTE: DEVIATED HOLE REQUEST SENT TO NMOCD - SANTA FE.

NOTE: UNORTHODOX LOCATION TO COMPLETE AN EFFICIENT PRODUCTION AND INJECTION PATTERN
WITHIN A SECONDARY RECOVERY PROJECT.

Permit Expires 1 Year From Approval
Date Unless Drilling Underway

²³ I hereby certify that the information given above is true and complete to the best of my knowledge and belief. Signature: <i>L.M. Sanders</i>		OIL CONSERVATION DIVISION	
Printed name: Larry M. Sanders		Approved by: ORIGINAL SIGNED BY: [Signature]	
Title: Senior Regulation Analyst		Title: DISTRICT SUPERVISOR	
Date: 05/16/96		Approval Date: JUN 24 1996 Expiration Date: 	
Phone: (915) 368-1488		Conditions of Approval: Attached <input type="checkbox"/>	

DISTRICT I
P.O. Box 1880, Hobbs, NM 88241-1880

DISTRICT II
P.O. Drawer DD, Artesia, NM 88211-0719

DISTRICT III
1000 Rio Brazos Rd., Aztec, NM 87410

DISTRICT IV
P.O. BOX 2088, SANTA FE, N.M. 87504-2088

State of New Mexico
Energy, Minerals and Natural Resources Department

Form C-102
Revised February 10, 1994
Submit to Appropriate District Office
State Lease - 4 Copies
Fee Lease - 3 Copies

OIL CONSERVATION DIVISION

P.O. Box 2088
Santa Fe, New Mexico 87504-2088

☐ AMENDED REPORT

WELL LOCATION AND ACREAGE DEDICATION PLAT

API Number 30-025-33489	Pool Code 62180	Pool Name VACUUM GRAYBURG/SAN ANDRES
Property Code 017021	Property Name STATE H-35	Well Number 016
OGRID No. 017643	Operator Name PHILLIPS PETROLEUM CO.	Elevation 4010

Surface Location

UL or lot No.	Section	Township	Range	Lot Idn	Feet from the	North/South line	Feet from the	East/West line	County
A	35	17 S	34 E		1120	NORTH	660	EAST	LEA

Bottom Hole Location If Different From Surface

UL or lot No.	Section	Township	Range	Lot Idn	Feet from the	North/South line	Feet from the	East/West line	County
A	35	17-S	34-E		1310'	NORTH	660'	EAST	LEA

Dedicated Acres	Joint or Infill	Consolidation Code	Order No.
40 Ac.			

NO ALLOWABLE WILL BE ASSIGNED TO THIS COMPLETION UNTIL ALL INTERESTS HAVE BEEN CONSOLIDATED
OR A NON-STANDARD UNIT HAS BEEN APPROVED BY THE DIVISION

D	C	B	A
E	F	G	H
L	K	J	I
M	N	O	P

OPERATOR CERTIFICATION

I hereby certify the the information contained herein is true and complete to the best of my knowledge and belief.

L.M. Sanders
Signature

L. M. Sanders
Printed Name

Sr. Regulation Analyst
Title

05/16/96
Date

SURVEYOR CERTIFICATION

I hereby certify that the well location shown on this plat was plotted from field notes of actual surveys made by me or under my supervision, and that the same is true and correct to the best of my belief.

APRIL 3, 1996

Date Surveyed
Signature & Seal of Professional Surveyor
DMCC

Ronald J. Eidson
96011-0409

Certificate No. JOHN W. WEST 676
RONALD J. EIDSON 3239
PROFESSIONAL SURVEYOR 12641

DISTRICT I
P.O. Box 1880, Hobbs, NM 88241-1880

State of New Mexico
Energy, Minerals and Natural Resources Department

Form C-102
Revised February 10, 1994
Submit to Appropriate District Office
State Lease - 4 Copies
Fee Lease - 3 Copies

DISTRICT II
P.O. Drawer DD, Artesia, NM 88211-0719

DISTRICT III
1000 Rio Brazos Rd., Aztec, NM 87410

DISTRICT IV
P.O. BOX 2088, SANTA FE, N.M. 87504-2088

OIL CONSERVATION DIVISION
P.O. Box 2088
Santa Fe, New Mexico 87504-2088

☐ AMENDED REPORT

WELL LOCATION AND ACREAGE DEDICATION PLAT

API Number	Pool Code	Pool Name
	62180	VACUUM GRAYBURG/SAN ANDRES
Property Code	Property Name	Well Number
017021	STATE H-35 STATE "35" UNIT	016 8
OGRID No.	Operator Name	Elevation
017643	PHILLIPS PETROLEUM CO.	4010

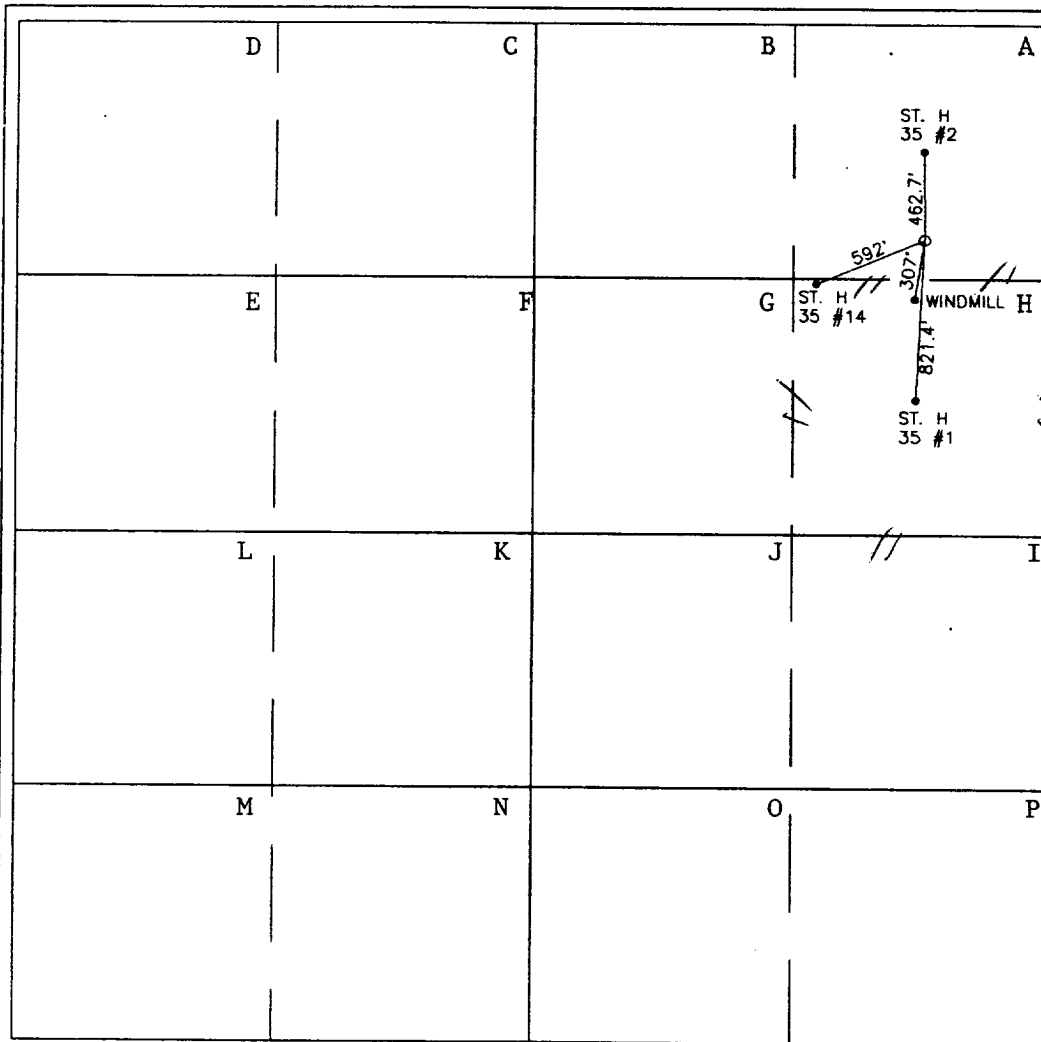
Surface Location

UL or lot No.	Section	Township	Range	Lot Idn	Feet from the	North/South line	Feet from the	East/West line	County
A	35	17 S	34 E		1120	NORTH	660	EAST	LEA

Bottom Hole Location If Different From Surface

UL or lot No.	Section	Township	Range	Lot Idn	Feet from the	North/South line	Feet from the	East/West line	County
A	35	17-S	34-E		1310'	NORTH	660'	EAST	LEA
Dedicated Acres	Joint or Infill	Consolidation Code	Order No.						
40 Ac.									

NO ALLOWABLE WILL BE ASSIGNED TO THIS COMPLETION UNTIL ALL INTERESTS HAVE BEEN CONSOLIDATED
OR A NON-STANDARD UNIT HAS BEEN APPROVED BY THE DIVISION



OPERATOR CERTIFICATION

I hereby certify the the information
contained herein is true and complete to the
best of my knowledge and belief.

J.M. Sanders
Signature

L. M. Sanders
Printed Name

Sr. Regulation Analyst
Title

05/16/96
Date

SURVEYOR CERTIFICATION

I hereby certify that the well location shown
on this plat was plotted from field notes of
actual surveys made by me or under my
supervision, and that the same is true and
correct to the best of my belief.

APRIL 3, 1996

Date Surveyed DMCC

Signature & Seal of
Professional Surveyor

Donald J. Eidson
96-11-0489

Certificate No. JOHN W. WEST 676
RONALD J. EIDSON 3239
EIDSON 12641

MUD PROGRAM

STATE H-35 WELL NOS. (16, 17)
HALE, M.E. WELL NOS. (24, 25, 26, 27)

DEPTH	MUD WEIGHT	VISCOSITY	FLUID LOSS	CL PPM	% SOLIDS	ADDITIVES
Surf. - 1600'	8.3 - 9.0 ppg	28 - 36 sec/1000 cc	N/C	-	-	Native Solids
1600' - 4000'	10.0 ppg	28 - 32 sec/1000 cc	N/C	Saturated	-	Native Solids
4000' - TD	10.0 - 10.2 ppg	32 - 36 sec/1000 cc	20 cc	Saturated	-	Starch/Drispac+

The Mud Engineer shall include on each test report the materials used for the previous 24 hour period. Daily fax the test reports to (915) 368-1507 Attn: J.C. Shoumaker / L.E. Robinson.

Send two copies of the Well Recap (Final Cost & Engineering Summaries) to Phillips Petroleum Company , Attn: J.C. Shoumaker / L.E. Robinson, 4001 Penbrook, Odessa, Texas 79762

CASING & CEMENTING PROGRAM

STATE H-35 WELL NO. 16

8 5/8" 24 lb/ft J-55 Surface Casing Set at 1600' - 12 1/4" Hole:

Lead: 450 sx Class "C" + 4% Gel + 2% CaCl₂.
Desired TOC = Surface.

Slurry Weight:	13.5 ppg
Slurry Yield:	1.72 ft ³ /sx
Water Requirement:	9.06 gals/sx

Tail: 150 sx Class "C" + 2% CaCl₂.
Desired TOC = 1300'.

Slurry Weight:	14.8 ppg
Slurry Yield:	1.32 ft ³ /sx
Water Requirement:	6.3 gals/sx

5 1/2" 15.5 lb/ft J-55 Production Casing Set at 5000' - 7 7/8" Hole:

Lead: 750 sx Class "C" + Econolite + 3% Salt.
Desired TOC = Surface.

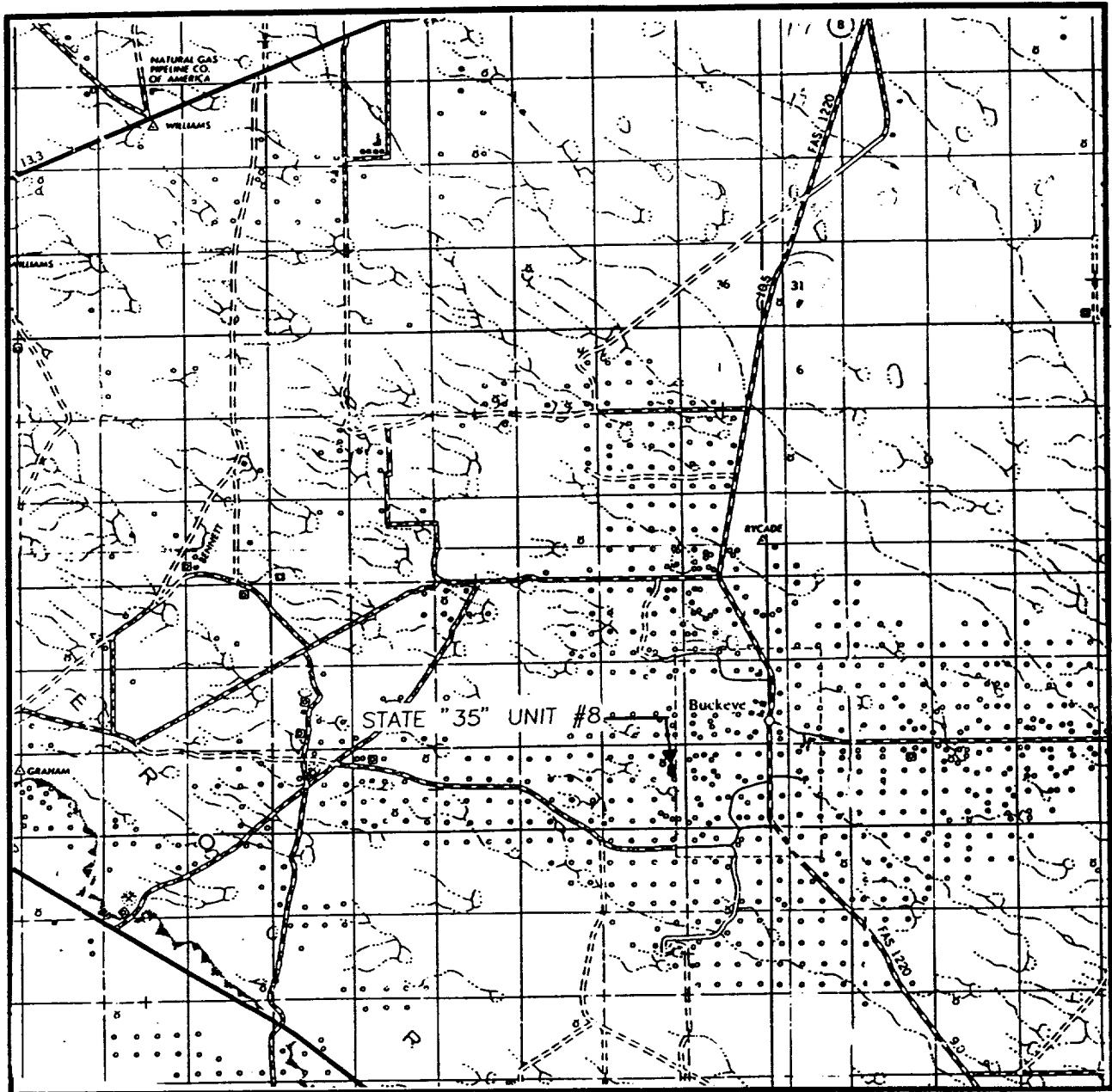
Slurry Weight:	11.80 ppg
Slurry Yield:	2.60 ft ³ /sx
Water Requirement:	15.60 gals/sx

Tail: 250 sx Class "C" + 50 lbs Pozmix + 7% CalSeal + 3% Salt +
0.5% Diacel FL + 0.5% CFR-3 + 0.5% Econolite.

Desired TOC = 4000'.

Slurry Weight:	15.00 ppg
Slurry Yield:	1.16 ft ³ /sx
Water Requirement:	4.77 gals/sx

VICINITY MA.



SCALE: 1" = 2 MILES

SEC. 35 TWP. 17-S RGE. 34-E

SURVEY N.M.P.M.

COUNTY LEA

DESCRIPTION 1120' FNL & 660' FEL

ELEVATION 4010

OPERATOR PHILLIPS PETROLEUM CO.

LEASE STATE "35" UNIT

JOHN WEST ENGINEERING
HOBBS, NEW MEXICO
(505) 393-3117



CONTOUR INTERVAL:
BUCKEYE - 5'

BUCKEYE, N.M.

**JOHN WEST ENGINEERING
HOBBS, NEW MEXICO
(505) 393-3117**