

DISTRICT I

P.O. Box 1980, Hobbs, NM 88241-1980

DISTRICT II

P.O. Box Drawer DD, Artesia, NM 88211-0719

DISTRICT III

1000 Rio Brazos Rd., Aztec, NM 87410

DISTRICT IV

P.O. Box 2088, Santa Fe, NM 87504-2088

State of New Mexico

Energy, Minerals and Natural Resources Department

Form C-101

Revised February 10, 1994

Instructions on back

Submit to Appropriate District Office

State Lease - 6 Copies

Fee Lease - 5 Copies

OIL CONSERVATION DIVISION

P.O. Box 2088

Santa Fe, New Mexico 87504-2088

☐ AMENDED REPORT

APPLICATION FOR PERMIT TO DRILL, RE-ENTER, DEEPEN, PLUGBACK, OR ADD A ZONE

| | | |
|--|--|---|
| ¹ Operator Name and Address TEXACO EXPLORATION & PRODUCTION INC. P.O. Box 3109, Midland Texas 79702 | | ² OGRID Number 022351 |
| | | ³ API Number 30-025-33599 |
| ⁴ Property Code 11126 | ⁵ Property Name WEST VACUUM UNIT | ⁶ Well No. 57 |

⁷ Surface Location

| UI or lot no. | Section | Township | Range | Lot.Idn | Feet From The | North/South Line | Feet From The | East/West Line | County |
|---------------|---------|----------|-------|---------|---------------|------------------|---------------|----------------|--------|
| P | 34 | 17-S | 34-E | | 75 | SOUTH | 1305 | EAST | LEA |

⁸ Proposed Bottom Hole Location If Different From Surface

| UI or lot no. | Section | Township | Range | Lot.Idn | Feet From The | North/South Line | Feet From The | East/West Line | County |
|---------------|---------|----------|-------|---------|---------------|------------------|---------------|----------------|--------|
| | | | | | | | | | |

| | |
|--|-------------------------------|
| ⁹ Proposed Pool 1 VACUUM GRAYBURG SAN ANDRES | ¹⁰ Proposed Pool 2 |
|--|-------------------------------|

| | | | | |
|-----------------------------------|---------------------------------------|--|------------------------------------|---|
| ¹¹ Work Type Code N | ¹² WellType Code O | ¹³ Rotary or C.T. ROTARY | ¹⁴ Lease Type Code S | ¹⁵ Ground Level Elevation 4030' |
| ¹⁶ Multiple No | ¹⁷ Proposed Depth 4800' | ¹⁸ Formation GRAYBURG/ S A | ¹⁹ Contractor NABORS | ²⁰ Spud Date 10/12/96 |

²¹ Proposed Casing and Cement Program

| SIZE OF HOLE | SIZE OF CASING | WEIGHT PER FOOT | SETTING DEPTH | SACKS OF CEMENT | EST. TOP |
|--------------|----------------|-----------------|---------------|-----------------|----------|
| 11 | 8 5/8 | 24# | 1550' | 550 SACKS | SURFACE |
| 7 7/8 | 5 1/2 | 15.5# | 4800' | 950 SACKS | SURFACE |
| | | | | | |
| | | | | | |
| | | | | | |

²² Describe the proposed program. If this application is to DEEPEN or PLUG BACK give the data on the present productive zone and proposed new productive zone. Describe the blowout prevention program, if any. Use additional sheets if necessary.

CEMENTING PROGRAM:

SURFACE CASING - 400 SACKS CLASS C W/ 4% GEL, 2% CACL₂ (13.5 PPG, 1.74 CF/S, 9.11 GW/S). F/B 150 SACKS CLASS C W/ 2% CACL₂ (14.8 PPG, 1.34 CF/S, 6.3 GW/S).

PRODUCTION CASING - 800 SACKS 35/65 POZ CLASS H W/ 6% GEL, 5% SALT, 1/4# FLOCELE (12.8 PPG, 1.94 CF/S, 10.5 GW/S). F/B 150 SACKS CLASS H (15.6 PPG, 1.18 CF/S, 5.2 GW/S).

THERE ARE NO OTHER OPERATORS IN THIS QUARTER QUARTER SECTION.

UNORTHODOX LOCATION: DISTRICT APPROVAL REQUESTED PER RULE 104.F.(1) FOR EFFICIENT INJECTION/ PRODUCTION PATTERN.

| | | | |
|--|--|--|--|
| ²³ I hereby certify that the rules and regulations of the Oil Conservation Division have been complied with and that the information given above is true and complete to the best of my knowledge and belief. | | OIL CONSERVATION DIVISION | |
| Signature <i>C. Wade Howard</i> | | | |
| Printed Name C. Wade Howard | | Approved By: <i>[Signature]</i> | |
| Title Eng. Assistant | | Title: | |
| Date 9/19/96 | | Approval Date: SEP 23 1996 Expiration Date: | |
| Telephone 688-4606 | | Conditions of Approval: Attached <input type="checkbox"/> | |

DISTRICT I
P. O. Box 1980, Hobbs, NM 88240

DISTRICT II
P. O. Drawer DD, Artesia, NM 88210

DISTRICT III
1000 Rio Brazos Rd., Aztec, NM 87410

DISTRICT IV
P. O. Box 2088, Santa Fe, NM 87504-2088

State of New Mexico
Energy, Minerals and Natural Resources Department

OIL CONSERVATION DIVISION

PO Box 2088
Santa Fe, NM 87504-2088

Form C-102
Revised February 10, 1994

Instructions on back

Submit to Appropriate District Office

State Lease-4 copies
Fee Lease-3 copies

☐ AMENDED REPORT

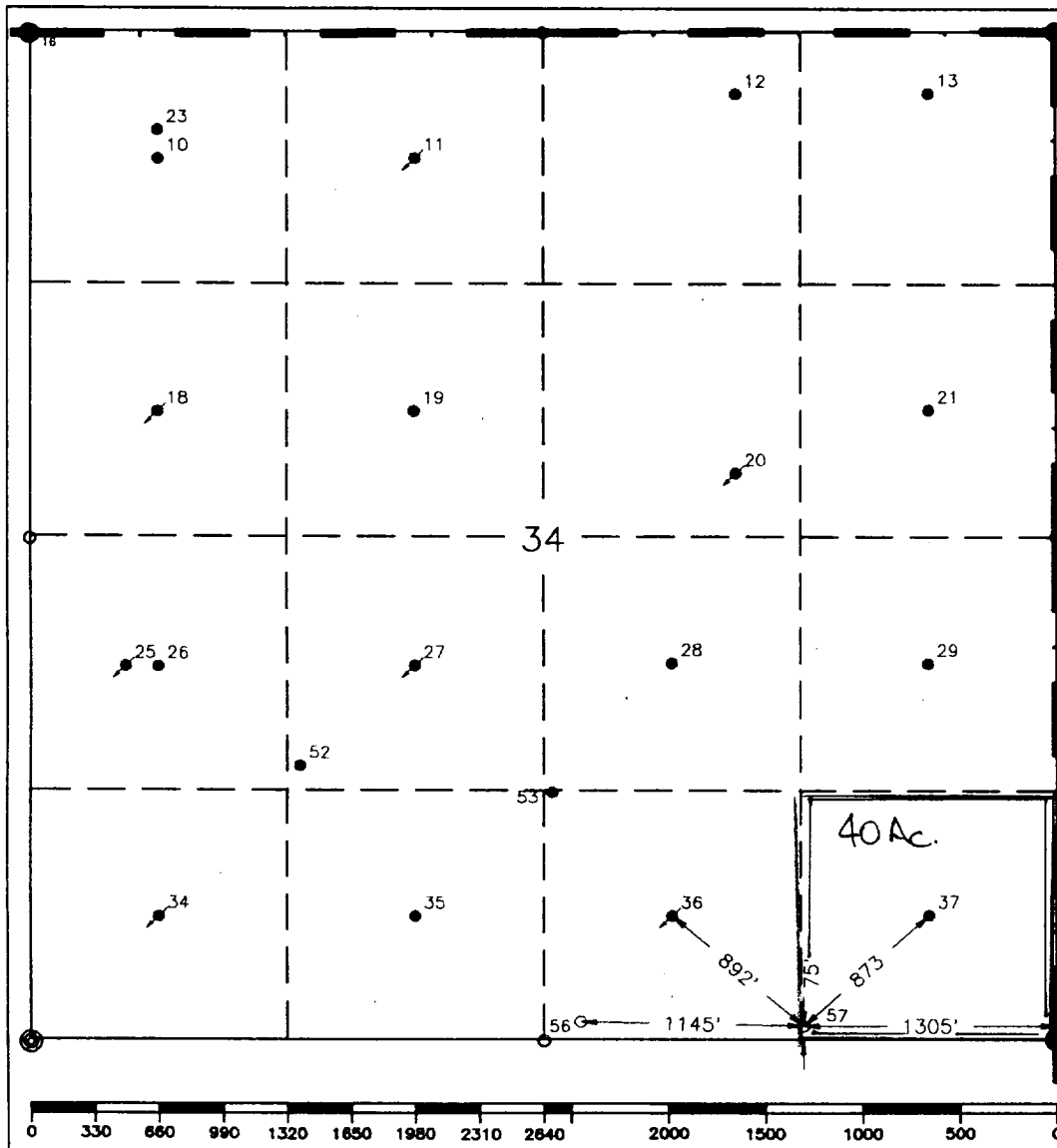
WELL LOCATION AND ACREAGE DEDICATION PLAT

| | | | | | |
|---|--|---|--|--|---------------------------------|
| ¹ API Number 30-025-33599 | | ² Pool Code 62180 | | ³ Pool Name Vacuum Grayburg San Andres | |
| ⁴ Property Code 11126 | | ⁵ Property Name West Vacuum Unit | | | ⁶ Well Number 57 |
| ⁷ OGRID No. 22351 | | ⁸ Operator Name TEXACO EXPLORATION & PRODUCTION, INC. | | | ⁹ Elevation 4030' |

| ¹⁰ Surface Location | | | | | | | | | |
|--------------------------------|---------|----------|-------|---------|---------------|------------------|---------------|----------------|---------------------|
| UL or lot no. | Section | Township | Range | Lot Idn | Feet from the | North/South line | Feet from the | East/West line | ⁷ County |
| P | 34 | 17-S | 34-E | | 75' | South | 1305' | East | Lea |

| ¹¹ Bottom Hole Location If Different From Surface | | | | | | | | | |
|--|---------|-------------------------------|-------|----------------------------------|---------------|-------------------------|---------------|----------------|---------------------|
| UL or lot no. | Section | Township | Range | Lot Idn | Feet from the | North/South line | Feet from the | East/West line | ⁷ County |
| | | | | | | | | | |
| ¹² Dedicated Acres 40 | | ¹³ Joint or Infill | | ¹⁴ Consolidation Code | | ¹⁵ Order No. | | | |

NO ALLOWABLE WILL BE ASSIGNED TO THIS COMPLETION UNTIL ALL INTERESTS HAVE BEEN CONSOLIDATED
OR A NON-STANDARD UNIT HAS BEEN APPROVED BY THE DIVISION.



¹⁷ OPERATOR CERTIFICATION

I hereby certify that the information contained herein is true and complete to the best of my knowledge and belief.

Signature

C. Wade Howard

Printed Name

C. Wade Howard

Position

Engineer's Assistant

Company

Texaco Expl. & Prod. Inc.

Date

September 17, 1996

¹⁸ SURVEYOR CERTIFICATION

I hereby certify that the well location shown on this plat was plotted from field notes of actual surveys made by me or under my supervision, and that the same is true and correct to the best of my knowledge and belief.

Date Surveyed

September 10, 1996

Signature & Seal of Professional Surveyor

John S. Piper

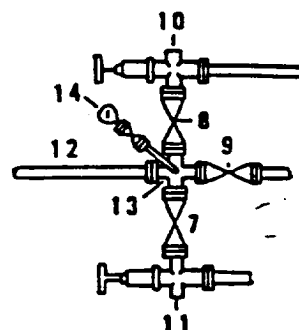
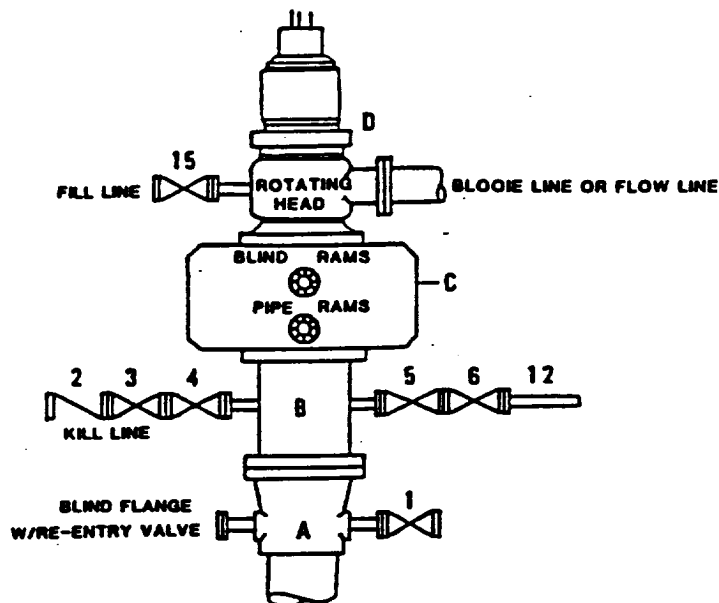
Certificate No.

7254 John S. Piper

Sheet

**DRILLING CONTROL
CONDITION II-B 3000 WP
FOR AIR DRILLING OR
WHERE NITROGEN OR AIR BLOWS ARE EXPECTED**

H₂S TRIM REQUIRED
YES _____ NO _____



**DRILLING CONTROL
MATERIAL LIST - CONDITION II - B**

- | | |
|----------------|---|
| A | Texaco Wellhead |
| B | 3000# W.P. drilling spool with a 2" minimum flanged outlet for kill line and 3" minimum flanged outlet for choke line. |
| C | 3000# W.P. Dual ram type preventer, hydraulic operated with 1" steel, 3000# W.P. control lines (where sub-structure height is adequate, 2 - 3000# W.P. single ram type preventers may be utilized). |
| D | Rotating Head with fill up outlet and extended Bloode Line. |
| 1,3,4, 7,8, | 2" minimum 3000# W.P. flanged full opening steel gate valve, or Halliburton Lo Torc Plug valve. |
| 2 | 2" minimum 3000# W.P. back pressure valve. |
| 5,6,9 | 3" minimum 3000# W.P. flanged full opening steel gate valve, or Halliburton Lo Torc Plug valve. |
| 12 | 3" minimum schedule 80, Grade "B", seamless line pipe. |
| 13 | 2" minimum x 3" minimum 3000# W.P. flanged cross. |
| 10,11 | 2" minimum 3000# W.P. adjustable choke bodies. |
| 14 | Cameron Mud Gauge or equivalent (location optional in choke line). |
| 15 | 2" minimum 3000# W.P. flanged or threaded full opening steel gate Valve, or Halliburton Lo Torc Plug valve. |



TEXACO, INC.
MIDLAND DIVISION
MIDLAND, TEXAS



| SCALE | DATE | EST. NO. | DRG. NO. |
|-------------|------|----------|----------|
| DRAWN BY | | | |
| CHECKED BY | | | |
| APPROVED BY | | | |

EXHIBIT C