

DISTRICT I  
P.O. Box 1980, Hobbs, NM 88241-1980  
DISTRICT II  
P.O. Box Drawer DD, Artesia, NM 88211-0719  
DISTRICT III  
1000 Rio Brazos Rd., Aztec, NM 87410  
DISTRICT IV  
P.O. Box 2088, Santa Fe, NM 87504-2088

State of New Mexico  
Energy, Minerals and Natural Resources Department

OIL CONSERVATION DIVISION

P.O. Box 2088  
Santa Fe, New Mexico 87504-2088

Form C-101  
Revised February 10, 1994  
Instructions on back  
Submit to Appropriate District Office  
State Lease - 6 Copies  
Fee Lease - 5 Copies

APPLICATION FOR PERMIT TO DRILL, RE-ENTER, DEEPEN, PLUGBACK, OR ADD A ZONE

☐ AMENDED REPORT

<sup>1</sup> Operator Name and Address TEXACO EXPLORATION & PRODUCTION INC. 205 E. Bender, HOBBS, NM 88240		<sup>2</sup> OGRID Number 022351
<sup>4</sup> Property Code 11122	<sup>5</sup> Property Name CENTRAL VACUUM UNIT	<sup>3</sup> API Number 30-025-33711
		<sup>6</sup> Well No. 167

<sup>7</sup> Surface Location									
Ul or lot no.	Section	Township	Range	Lot.Idn	Feet From The	North/South Line	Feet From The	East/West Line	County
G	36	17-S	34-E		2000	NORTH	2630	EAST	LEA

<sup>8</sup> Proposed Bottom Hole Location If Different From Surface									
Ul or lot no.	Section	Township	Range	Lot.Idn	Feet From The	North/South Line	Feet From The	East/West Line	County
H	36	17-S	34-E		2000	NORTH	1310	EAST	LEA
<sup>9</sup> Proposed Pool 1					<sup>10</sup> Proposed Pool 2				

<sup>11</sup> Work Type Code AP	<sup>12</sup> WellType Code O	<sup>13</sup> Rotary or C.T. ROTARY	<sup>14</sup> Lease Type Code S	<sup>15</sup> Ground Level Elevation 3996' GR
<sup>16</sup> Multiple No	<sup>17</sup> Proposed Depth 4850'	<sup>18</sup> Formation GRAYBURG/ S A	<sup>19</sup> Contractor	<sup>20</sup> Spud Date 10/13/99 1243/1996

<sup>21</sup> Proposed Casing and Cement Program					
SIZE OF HOLE	SIZE OF CASING	WEIGHT PER FOOT	SETTING DEPTH	SACKS OF CEMENT	EST. TOP
11"	8 5/8"	24#	1540'	550 SX, CIRC 10	SURFACE
7 7/8"	5 1/2"	17#	4850'	1000 SX, CIRC 100	SURFACE

<sup>22</sup> Describe the proposed program. If this application is to DEEPEN or PLUG BACK give the data on the present productive zone and proposed new productive zone. Describe the blowout prevention program, if any. Use additional sheets if necessary.

Objective: Texaco intends to directionally drill a 1320' horizontal lateral at approximately 88 degrees from north (easterly direction).

1. MIRU pulling unit. Install BOP. POH with production equipment.
2. Run in hole with whipstock set at ~4300'. Run in hole with mill, motor, collars, and drill pipe.
3. Drill lateral to the east to a bottom hole location 1320' away. TOH.
4. Acidize lateral using 20-30 gal per foot of pay.
5. Retrieve whipstock.
6. Run production equipment and return to production.

Plugback Directionally

<sup>23</sup> I hereby certify that the rules and regulations of the Oil Conservation Division have been complied with and that the information given above is true and complete to the best of my knowledge and belief.

Signature *James L. Anderson*  
Printed Name James L. Anderson  
Title Prod. Engineer  
Date 10/5/99

Telephone 397-0420

OIL CONSERVATION DIVISION	
Approved By: <i>James L. Anderson</i>	
Title:	
Approval Date: OCT 08 1999	Expiration Date:
Conditions of Approval: Attached <input type="checkbox"/>	

## DISTRICT I

P.O. Box 1980, Hobbs, NM 88241-1980

## DISTRICT II

P.O. Box Drawer DD, Artesia, NM 88211-0719

## DISTRICT III

1000 Rio Brazos Rd., Aztec, NM 87410

## DISTRICT IV

P.O. Box 2088, Santa Fe, NM 87504-2088

State of New Mexico

Energy, Minerals and Natural Resources Department

Form C-102

Revised February 10, 1994

Instructions on back

Submit to Appropriate District Office

State Lease - 4 Copies

Fee Lease - 3 Copies

☐ AMENDED REPORT

## OIL CONSERVATION DIVISION

P.O. Box 2088

Santa Fe, New Mexico 87504-2088

## WELL LOCATION AND ACREAGE DEDICATION PLAT

<sup>1</sup> API Number 30-025-33711	<sup>2</sup> Pool Code 62180	<sup>3</sup> Pool Name VACUUM GRAYBURG SAN ANDRES
<sup>4</sup> Property Code 11122	<sup>5</sup> Property Name CENTRAL VACUUM UNIT	<sup>6</sup> Well No. 167
<sup>7</sup> OGRID Number 022351	<sup>8</sup> Operator Name TEXACO EXPLORATION & PRODUCTION INC.	<sup>9</sup> Elevation 3996' GR

<sup>10</sup> Surface Location

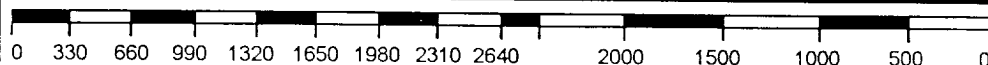
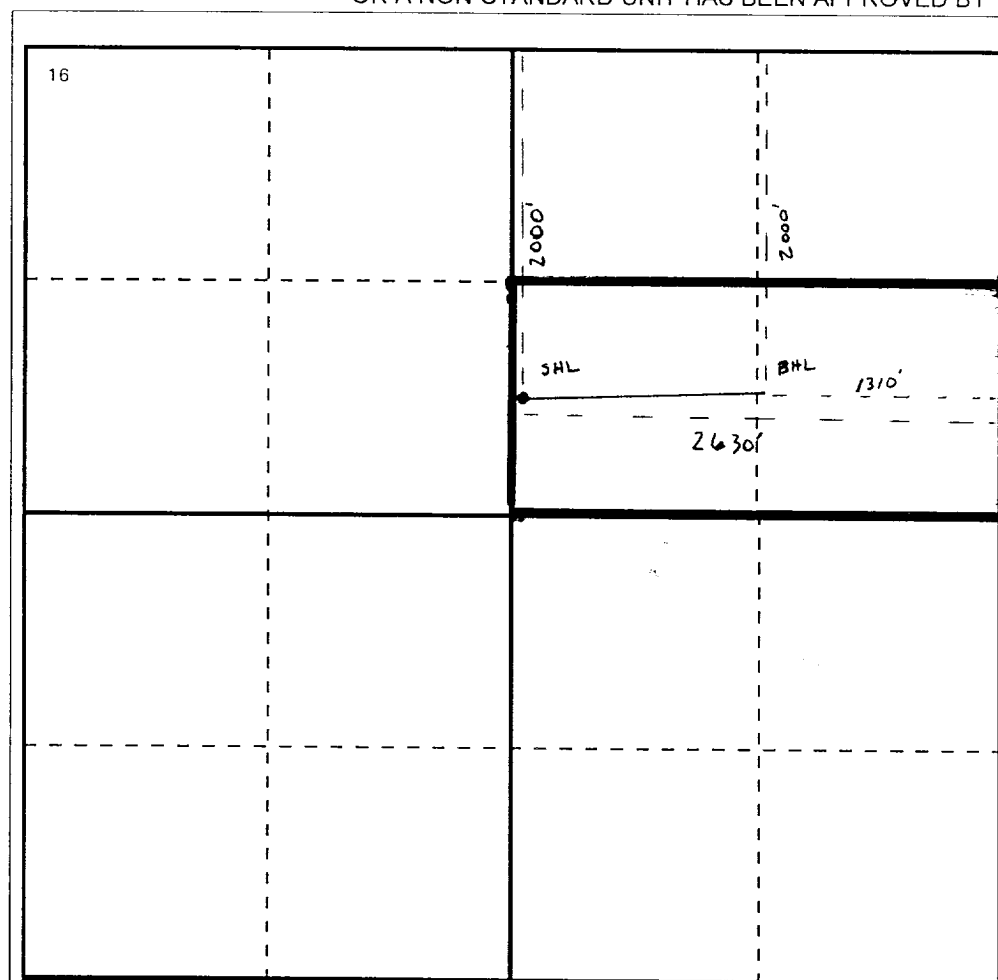
UI or lot no. G	Section 36	Township 17-S	Range 34-E	Lot.Idn	Feet From The 2000	North/South Line NORTH	Feet From The 2630	East/West Line EAST	County LEA
--------------------	---------------	------------------	---------------	---------	-----------------------	---------------------------	-----------------------	------------------------	---------------

<sup>11</sup> Bottom Hole Location If Different From Surface

UI or lot no. H	Section 36	Township 17-S	Range 34-E	Lot.Idn	Feet From The 2000	North/South Line NORTH	Feet From The 1310	East/West Line EAST	County LEA
--------------------	---------------	------------------	---------------	---------	-----------------------	---------------------------	-----------------------	------------------------	---------------

<sup>12</sup> Dedicated Acres 80	<sup>13</sup> Joint or Infill No	<sup>14</sup> Consolidation Code	<sup>15</sup> Order No.
-------------------------------------	-------------------------------------	----------------------------------	-------------------------

NO ALLOWABLE WILL BE ASSIGNED TO THIS COMPLETION UNTIL ALL INTERESTS HAVE BEEN CONSOLIDATED  
OR A NON-STANDARD UNIT HAS BEEN APPROVED BY THE DIVISION



## 17 OPERATOR CERTIFICATION

I hereby certify that the information contained herein is true and complete to the best of my knowledge and belief

Signature

Printed Name

James L. Anderson

Position

Prod. Engineer

Date

10/5/99

## 18 SURVEYOR CERTIFICATION

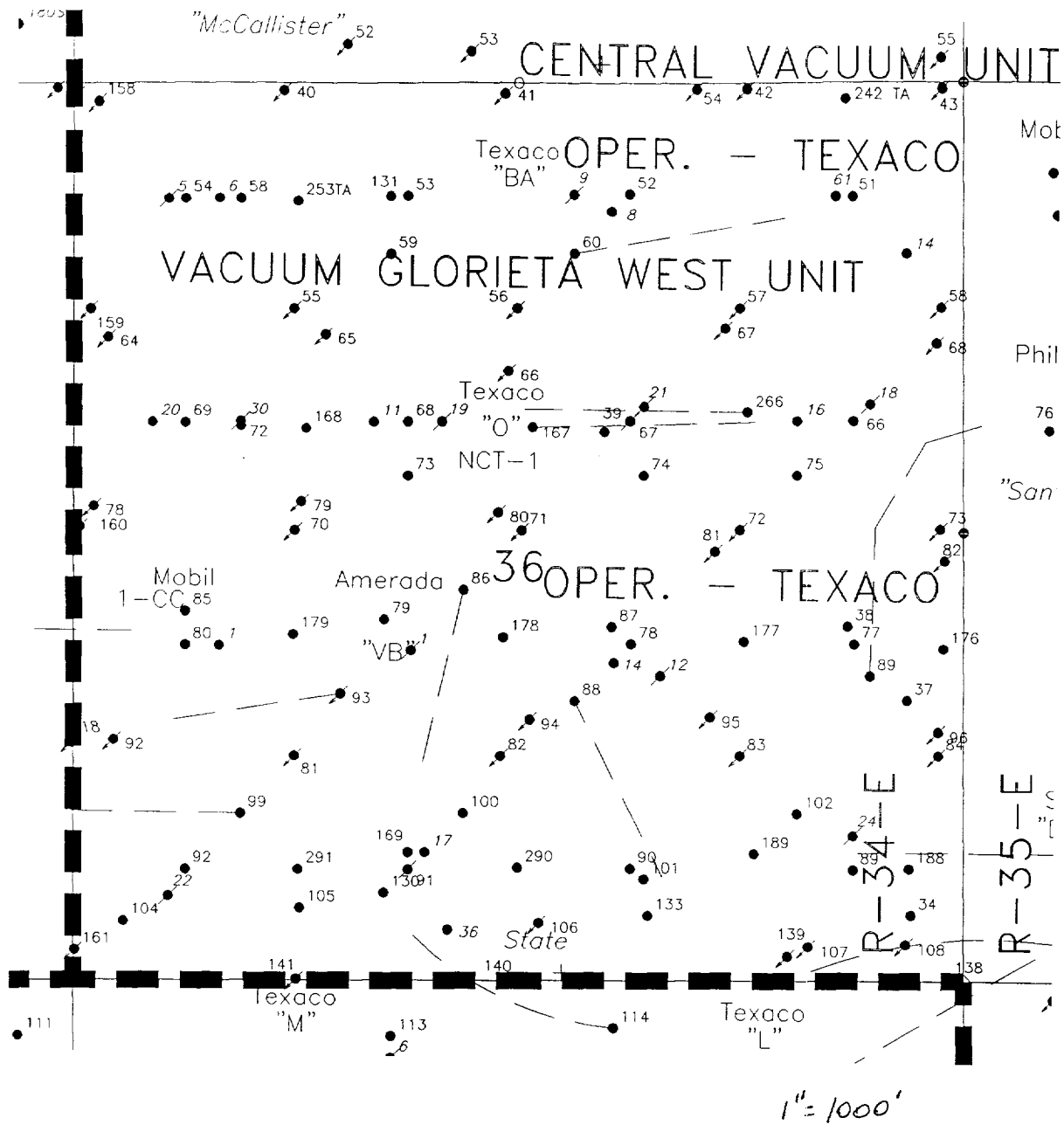
I hereby certify that the well location shown on this plat was plotted from field notes of actual surveys made by me or under my supervision, and that the same is true and correct to the best of my knowledge and belief.

Date Surveyed

Signature &amp; Seal of

Professional Surveyor

Certificate No.



## Leake, J Denise

**From:** Raines, Mike A  
**Sent:** Monday, October 04, 1999 5:36 PM  
**To:** Schaneman, Boyd D  
**Cc:** Anderson, James L; Leake, J Denise; Woliver, Jeff M; Boomer, Robert J; Wehner, Scott C  
**Subject:** CVU # 167 Horizontal Well - # 2 of 2

Boyd -  
Here are some details of the 5.5" cased well # 167, which will be an upper San Andres lateral replacement for CVU # 67.

### **TOP of TARGET ZONE**

Distance	Depth
0	4375
1320	4397

### **BASE of TARGET ZONE**

Distance	Depth
0	4477
1320	4491

This lateral should proceed easterly at ~ 88 degrees to avoid offset well New Mexico "O" State Nct-1 #39, which indicates poor porosity to the south, and plugged well New Mexico "O" State Nct-1 # 21. It is possible that we may encounter one of the plugged vertical holes from CVU # 67. However, we do not have a survey on either vertical hole. If we survey both CVU # 266 and # 167 prior to initiating this drilling program, we could estimate the downhole location of # 67 and change plans accordingly. Without that additional information, we would prefer to deviate to the north, if neccessary. The offset well we are drilling toward (CVU # 266) is ~ 1318' away at 88 degrees.

We would like to keep the vertical hole. We would like to end ~ 200' from CVU # 266. We would like to cross the zone at least twice (hit bottom of zone ~ 600' from wellbore and top of zone ~ 1118' from wellbore). It would be more efficient for treatment if we could hit the top of the zone at distance of 200' or more from the wellbore.

Assuming one down and one up leg, I estimate that we will need to treat ~ 600 to 650 feet.

Thank you,  
Mike Raines  
TexNet 672-4539