

DISTRICT I

P.O. Box 1980, Hobbs, NM 88241-1980

DISTRICT II

P.O. Box Drawer DD, Artesia, NM 88211-0719

DISTRICT III

1000 Rio Brazos Rd., Aztec, NM 87410

DISTRICT IV

P.O. Box 2088, Santa Fe, NM 87504-2088

State of New Mexico

Energy, Minerals and Natural Resources Department

Form C-101

Revised February 10, 1994

Instructions on back

Submit to Appropriate District Office

State Lease - 6 Copies

Fee Lease - 5 Copies

OIL CONSERVATION DIVISION

P.O. Box 2088

Santa Fe, New Mexico 87504-2088

☐ AMENDED REPORT

APPLICATION FOR PERMIT TO DRILL, RE-ENTER, DEEPEN, PLUGBACK, OR ADD A ZONE

¹ Operator Name and Address TEXACO EXPLORATION & PRODUCTION INC. P.O. Box 3109, Midland Texas 79702		² OGRID Number 022351
⁴ Property Code 11126	⁵ Property Name WEST VACUUM UNIT	³ API Number 30-025-33764
		⁶ Well No. 59

⁷ Surface Location

Ul or lot no.	Section	Township	Range	Lot.Idn	Feet From The	North/South Line	Feet From The	East/West Line	County
N	34	17-S	34-E		150	SOUTH	1500	WEST	LEA

⁸ Proposed Bottom Hole Location If Different From Surface

Ul or lot no.	Section	Township	Range	Lot.Idn	Feet From The	North/South Line	Feet From The	East/West Line	County
⁹ Proposed Pool 1 VACUUM GRAYBURG SAN ANDRES					¹⁰ Proposed Pool 2				

¹¹ Work Type Code N	¹² WellType Code O	¹³ Rotary or C.T. ROTARY	¹⁴ Lease Type Code S	¹⁵ Ground Level Elevation 4033'
¹⁶ Multiple No	¹⁷ Proposed Depth 4850'	¹⁸ Formation GRAYBURG SAN ANDRES	¹⁹ Contractor NABORS	²⁰ Spud Date 1/15/97

²¹ Proposed Casing and Cement Program

SIZE OF HOLE	SIZE OF CASING	WEIGHT PER FOOT	SETTING DEPTH	SACKS OF CEMENT	EST. TOP
11	8 5/8	24#	1550'	550 SACKS	SURFACE
7 7/8	5 1/2	15.5#	450'	150 SACKS	SURFACE
Permit Expires 1 Year From Approval Date Unless Drilling Underway					

²² Describe the proposed program. If this application is to DEEPEN or PLUG BACK give the data on the present productive zone and proposed new productive zone.
Describe the blowout prevention program, if any. Use additional sheets if necessary.

CEMENTING PROGRAM:

SURFACE CASING: 400 SACKS CLASS C w/ 4% GEL, 2% CC (13.5 PPG, 1.74 CF/S, 9.1 GW/S). F/B 150 SACKS CLASS C w/ 2% CC (14.8 PPG, 1.34 CF/S, 6.3 GW/S).

PRODUCTION CASING: 800 SACKS 35/65 POZ H w/ 6% GEL, 5% SALT, 1/4# FC (12.8 PPG, 1.94 CF/S, 10.4 GW/S). F/B 150 SACKS CLASS H (15.6 PPG, 1.18 CF/S, 5.2 GW/S).

THERE ARE NO OTHER OPERATORS IN THIS QUARTER QUARTER SECTION.

UNORTHODOX LOCATION: NMOCD DISTRICT APPROVAL REQUESTED PER RULE 104.F.(1) FOR EFFICIENT PRODUCTION PATTERN.

²³ I hereby certify that the rules and regulations of the Oil Conservation Division have been complied with and that the information given above is true and complete to the best of my knowledge and belief.

Signature

C. Wade Howard

Printed Name

C. Wade Howard

Title Eng. Assistant

Date 1/3/97

Telephone 688-4606

OIL CONSERVATION DIVISION

Approved By:

Title:

Approval Date:

JAN 07 1997

Expiration Date:

Conditions of Approval:

Attached ☐

DISTRICT I
P. O. Box 1980, Hobbs, NM 88240

DISTRICT II
P. O. Drawer DD, Artesia, NM 88210

DISTRICT III
1000 Rio Brazos Rd., Aztec, NM 87410

DISTRICT IV
P. O. Box 2088, Santa Fe, NM 87504-2088

State of New Mexico
Energy, Minerals and Natural Resources Department

OIL CONSERVATION DIVISION

PO Box 2088
Santa Fe, NM 87504-2088

Form C-102
Revised February 10, 1994

Instructions on back

Submit to Appropriate District Office

State Lease-4 copies
Fee Lease-3 copies

☐ AMENDED REPORT

WELL LOCATION AND ACREAGE DEDICATION PLAT

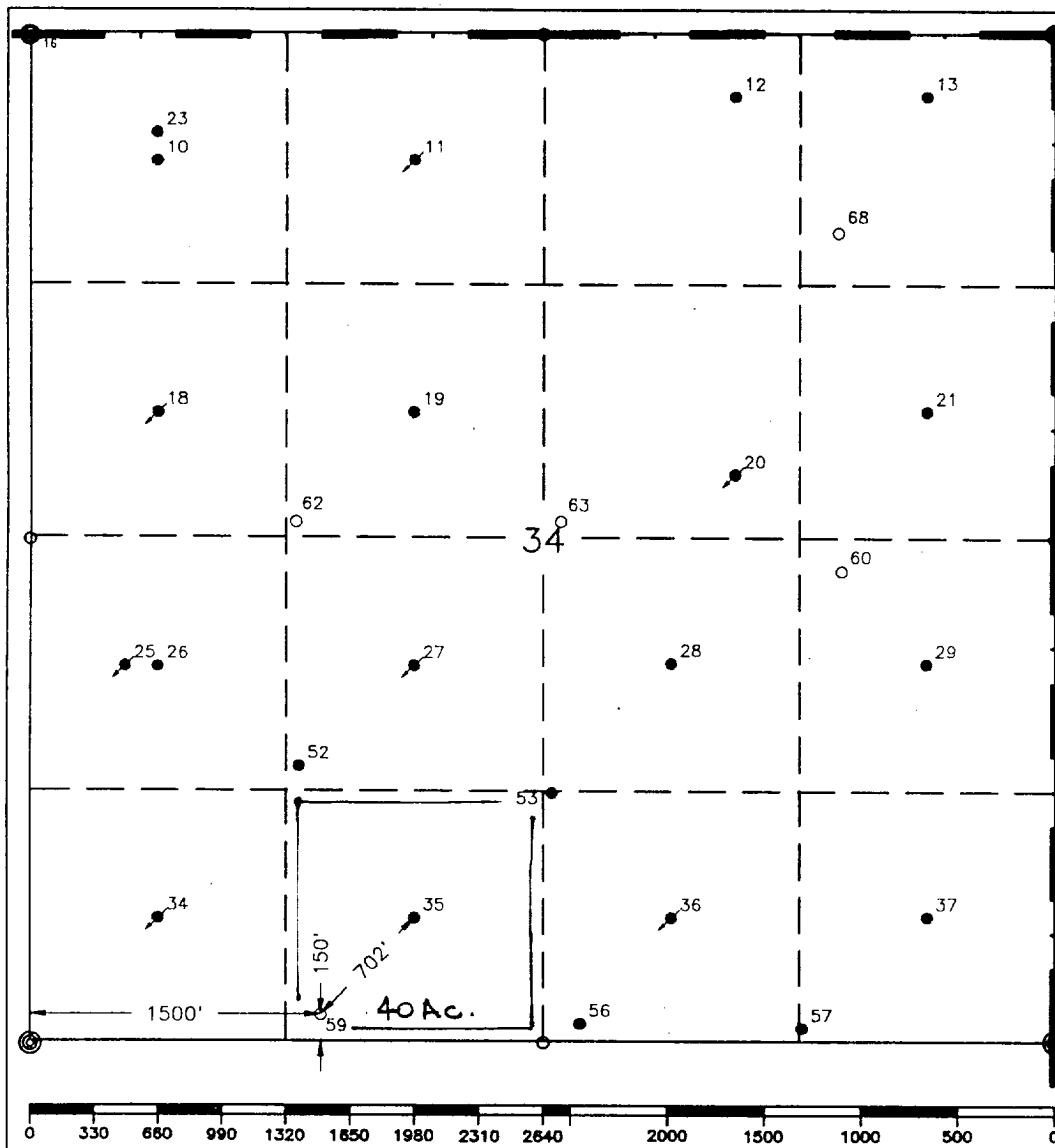
¹ API Number 30-025-33764		² Pool Code 62180		³ Pool Name Vacuum Grayburg San Andres	
⁴ Property Code 11126		⁵ Property Name West Vacuum Unit			⁶ Well Number 59
⁷ GRID No. 22351		⁸ Operator Name TEXACO EXPLORATION & PRODUCTION, INC.			⁹ Elevation 4033'

¹⁰ Surface Location									
UL or lot no. N	Section 34	Township 17-S	Range 34-E	Lot Idn	Feet from the 150'	North/South line South	Feet from the 1500'	East/West line West	⁷ County Lea

¹¹ Bottom Hole Location If Different From Surface									
UL or lot no.	Section	Township	Range	Lot Idn	Feet from the	North/South line	Feet from the	East/West line	⁷ County

¹² Dedicated Acres 40	¹³ Joint or Infill	¹⁴ Consolidation Code	¹⁵ Order No.
--	-------------------------------	----------------------------------	-------------------------

NO ALLOWABLE WILL BE ASSIGNED TO THIS COMPLETION UNTIL ALL INTERESTS HAVE BEEN CONSOLIDATED
OR A NON-STANDARD UNIT HAS BEEN APPROVED BY THE DIVISION.



¹⁶OPERATOR CERTIFICATION

I hereby certify that the information contained herein is true and complete to the best of my knowledge and belief.

Signature

C. Wade Howard

Printed Name

C. Wade Howard

Position

Engineer's Assistant

Company

Texaco Expl. & Prod. Inc.

Date

January 2, 1997

¹⁸SURVEYOR CERTIFICATION

I hereby certify that the well location shown on this plat was plotted from field notes of actual surveys made by me or under my supervision, and that the same is true and correct to the best of my knowledge and belief.

Date Surveyed

December 17, 1996

Signature & Seal of Professional Surveyor

John S. Piper

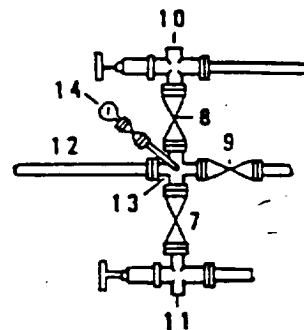
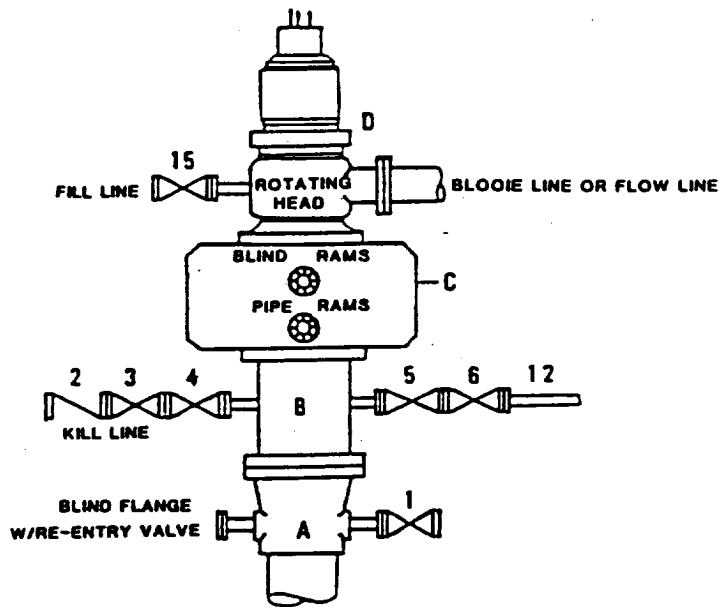
Certificate No.

7254 John S. Piper

Sheet

**DRILLING CONTROL
CONDITION II-B 3000 WP
FOR AIR DRILLING OR
WHERE NITROGEN OR AIR BLOWS ARE EXPECTED**

H₂S TRIM REQUIRED
YES _____ NO _____



DRILLING CONTROL

MATERIAL LIST - CONDITION II - B

- | | |
|----------------|---|
| A | Texaco Wellhead |
| B | 3000# W.P. drilling spool with a 2" minimum flanged outlet for kill line and 3" minimum flanged outlet for choke line. |
| C | 3000# W.P. Dual ram type preventer, hydraulic operated with 1" steel, 3000# W.P. control lines (where sub-structure height is adequate, 2 - 3000# W.P. single ram type preventers may be utilized). |
| D | Rotating Head with fill up outlet and extended Blooe Line. |
| 1,3,4,
7,8, | 2" minimum 3000# W.P. flanged full opening steel gate valve, or Halliburton Lo Torc Plug valve. |
| 2 | 2" minimum 3000# W.P. back pressure valve. |
| 5,6,9 | 3" minimum 3000# W.P. flanged full opening steel gate valve, or Halliburton Lo Torc Plug valve. |
| 12 | 3" minimum schedule 80, Grade "B", seamless line pipe. |
| 13 | 2" minimum x 3" minimum 3000# W.P. flanged cross. |
| 10,11 | 2" minimum 3000# W.P. adjustable choke bodies. |
| 14 | Cameron Mud Gauge or equivalent (location optional in choke line). |
| 15 | 2" minimum 3000# W.P. flanged or threaded full opening steel gate valve, or Halliburton Lo Torc Plug valve. |



TEXACO, INC.
MIDLAND DIVISION
MIDLAND, TEXAS



SCALE	DATE	EST NO	DRG NO
DRAWN BY			
CHECKED BY			
APPROVED BY			

EXHIBIT C

8/20/97

