

DISTRICT I
P.O. Box 1280, Hobbs, NM 88241-1280

DISTRICT II
P.O. Drawer DD, Artesia, NM 88211-0719

DISTRICT III
1000 Rio Brazos Rd., Aztec, NM 87410

DISTRICT IV
P.O. Box 2088, Santa Fe, NM 87504-2088

State of New Mexico
Energy, Minerals and Natural Resources Department

Form C-102
Revised February 10, 1994
Submit to Appropriate District Office
State Lease - 4 Copies
Fee Lease - 3 Copies

OIL CONSERVATION DIVISION
P.O. Box 2088
Santa Fe, New Mexico 87504-2088

☐ AMENDED REPORT

WELL LOCATION AND ACREAGE DEDICATION PLAT

API Number 30-025-33813	Pool Code 8328D	Pool Name Quail Ridge Mallow
Property Code 16285	Property Name MESCALERO RIDGE UNIT 30	Well Number 4
OGRID No. 13925	Operator Name MALLON OIL COMPANY	Elevation 3667'

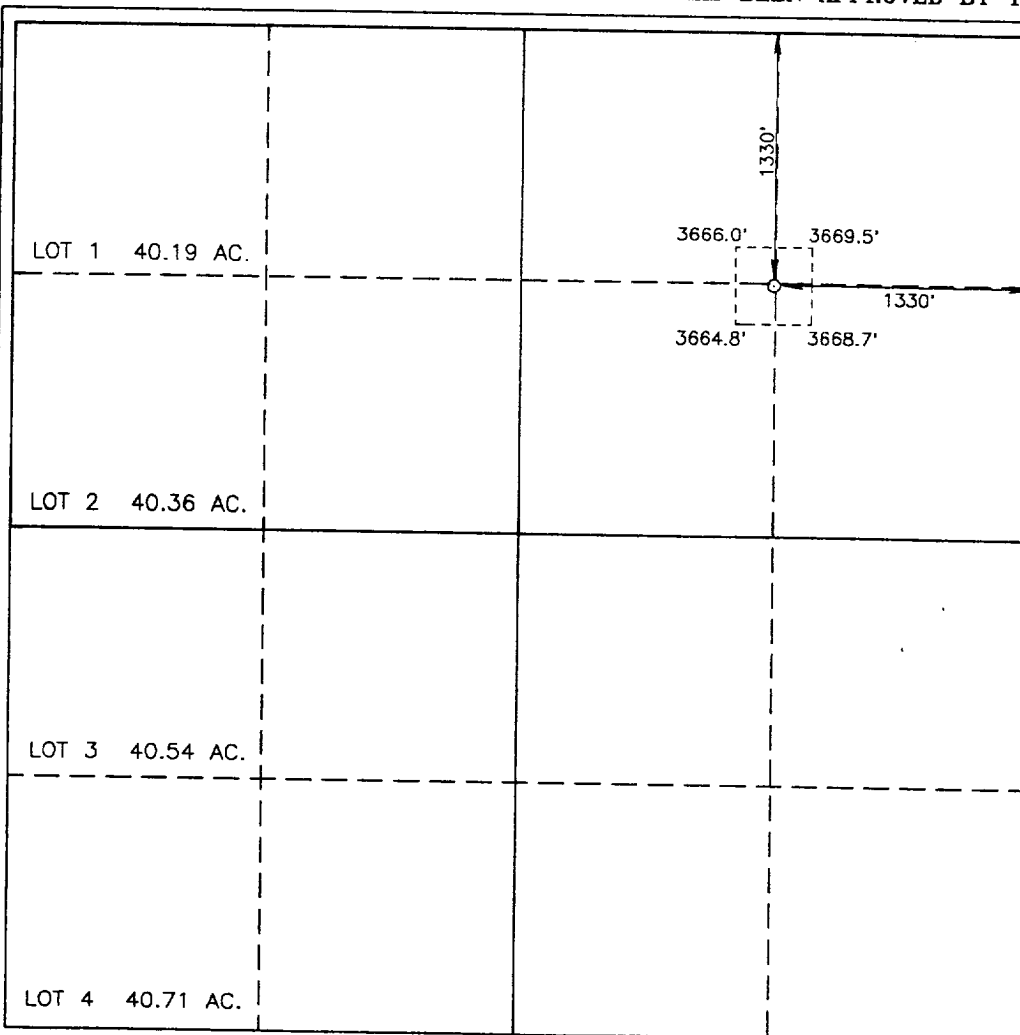
Surface Location

UL or lot No. G	Section 30	Township 19 S	Range 34 E	Lot Idn	Feet from the 1330	North/South line NORTH	Feet from the 1330	East/West line EAST	County LEA
---------------------------	----------------------	-------------------------	----------------------	---------	------------------------------	----------------------------------	------------------------------	-------------------------------	----------------------

Bottom Hole Location If Different From Surface

UL or lot No.	Section	Township	Range	Lot Idn	Feet from the	North/South line	Feet from the	East/West line	County
Dedicated Acres 320.55 AC.	Joint or Infill	Consolidation Code	Order No. NSL-3827						

NO ALLOWABLE WILL BE ASSIGNED TO THIS COMPLETION UNTIL ALL INTERESTS HAVE BEEN CONSOLIDATED
OR A NON-STANDARD UNIT HAS BEEN APPROVED BY THE DIVISION



OPERATOR CERTIFICATION

I hereby certify the the information
contained herein is true and complete to the
best of my knowledge and belief.

Duane C. Winkler
Signature

Duane C. Winkler
Printed Name

Production Superintendent
Title

11/13/96
Date

SURVEYOR CERTIFICATION

I hereby certify that the well location shown
on this plat was plotted from field notes of
actual surveys made by me or under my
supervision, and that the same is true and
correct to the best of my belief.

NOVEMBER 11, 1996

Date Surveyed **JLP**

Signature & Seal
Professional Surveyor

RONALD J. EIDSON
NEW MEXICO
Surveyor No. **86-11469**

Certificate No. **JOHN W. WEST, 676**
RONALD J. EIDSON, 3239
Professional Surveyor **G. EIDSON, 12841**

42.378

42.378