

District I
 P- Box 1980, Hobbs, NM 88241-1980
 District II
 PO Drawer DD, Artesia, NM 88211-0719
 District III
 1000 Rio Brazos Rd., Aztec, NM 87410
 District IV
 PO Box 2088, Santa Fe, NM 87504-2088

State of New Mexico
 Energy, Minerals & Natural Resources Department

OIL CONSERVATION DIVISION
 PO Box 2088
 Santa Fe, NM 87504-2088

Form C-101
 Revised February 10, 1994
 Instructions on back
 Submit to Appropriate District Office
 State Lease - 6 Copies
 Fee Lease - 5 Copies

AMENDED REPORT

APPLICATION FOR PERMIT TO DRILL, RE-ENTER, DEEPEN, PLUGBACK, OR ADD A ZONE

Operator Name and Address: Rand Paulson Oil Company, Inc. 508 W. Wall STE 100 Midland, Texas 79701		OGRID Number 159123
		API Number 30-025-33925
Property Code 20650	Property Name Summers Neal	Well No. 2

Surface Location

UL or lot no.	Section	Township	Range	Lot Idn	Feet from the	North/South line	Feet from the	East/West line	County
G	18	17-S	39-E		2040	North	2040	East	Lea

Proposed Bottom Hole Location If Different From Surface

UL or lot no.	Section	Township	Range	Lot Idn	Feet from the	North/South line	Feet from the	East/West line	County
Proposed Pool 1 South Knowles (Devonian)					Proposed Pool 2				

Work Type Code N	Well Type Code O	Cable/Rotary R	Lease Type Code P	Ground Level Elevation 3655'
Multiple No	Proposed Depth 12,300'	Formation Devonian	Contractor TMBR/Sharp	Spud Date 5-1-97

Proposed Casing and Cement Program

Hole Size	Casing Size	Casing weight/foot	Setting Depth	Sacks of Cement	Estimated TOC
17 1/2"	13 3/8"	48	400	400	Surface
11"	8 5/8"	32	4700	1200	Surface
7 7/8"	5 1/2"	17	12,300	1200	4500'

Describe the proposed program. If this application is to DEEPEN or PLUG BACK give the data on the present productive zone and proposed new productive zone. Describe the blowout prevention program, if any. Use additional sheets if necessary.

Propose to drill a Devonian well to 12,300'. Cement will be circulated to surface on 13 3/8" & 8 5/8" casing. Plan to test significant shows and evaluate with adequate logging program.

Completion or abandonment will be performed in accordance with prudent practices and regulatory requirements. A double ram series 900 BOP and choke manifold will be used from 8 5/8" casing to total depth.

I hereby certify that the information given above is true and complete to the best of my knowledge and belief.

Signature:

O.H. Routh

Printed name:

O.H. Routh

Title:

Agent

Date:

4-3-97

Phone:

915-687-0323

OIL CONSERVATION DIVISION

Approved by:

ORIGINAL SIGNED BY
GARY WINK

Title:

FIELD REP. II

Approval Date:

APR 15 1997

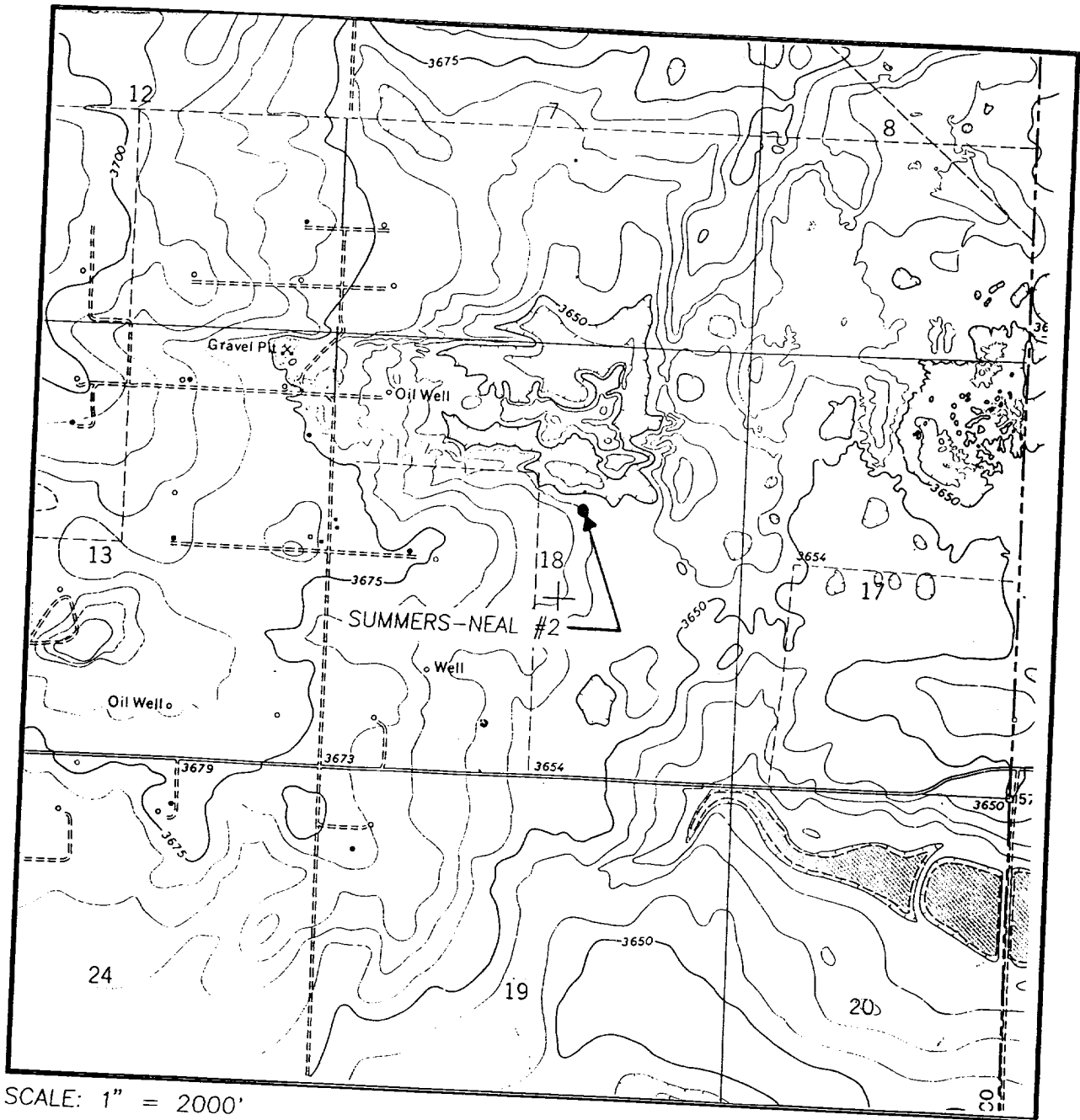
Expiration Date:

Conditions of Approval:

Attached

Permit Expires 1 Year From Approval
 Date Unless Drilling Underway

LOCATION VERIFICATION MAP



SCALE: 1" = 2000'

CONTOUR INTERVAL:
HUMBLE CITY SE - 5'

SEC. 18 TWP. 17-S RGE. 39-E

SURVEY N.M.P.M.

COUNTY LEA

DESCRIPTION 2040' FNL & 2040' FEL

ELEVATION 3655

OPERATOR RAND PAULSON OIL COMPANY

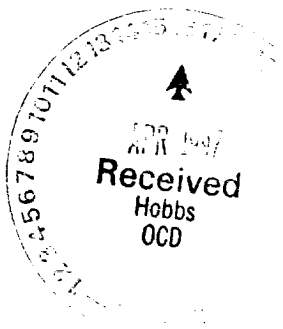
LEASE SUMMERS-NEAL

U.S.G.S. TOPOGRAPHIC MAP

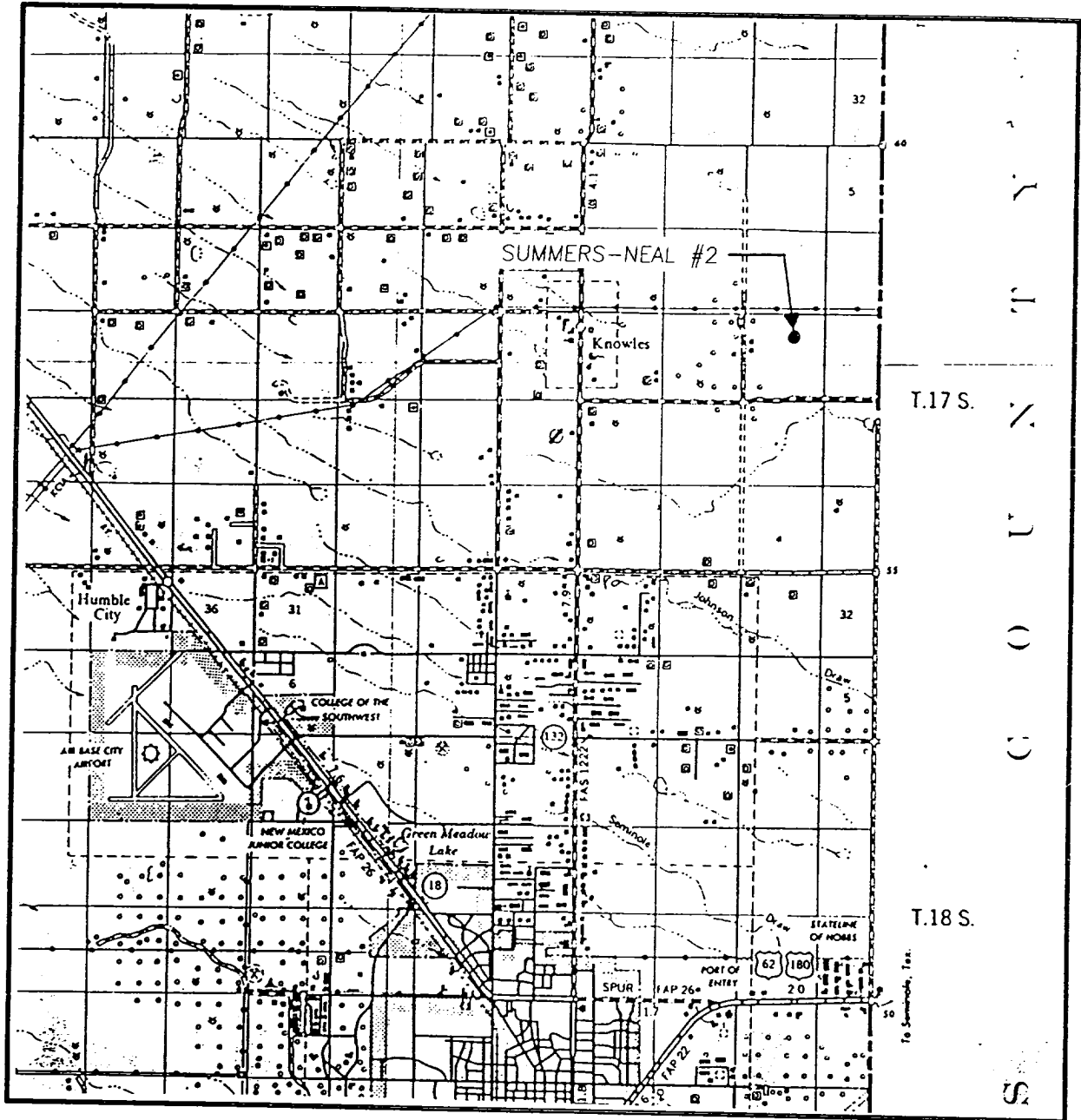
HUMBLE CITY SE, N.M.

**JOHN WEST ENGINEERING
HOBBS, NEW MEXICO**

(505) 393-3117



VICINITY MAP



SCALE: 1" = 2 MILES

SEC. 18 TWP. 17-S RGE. 39-E

SURVEY N.M.P.M.

COUNTY LEA

DESCRIPTION 2040' FNL & 2040' FEL

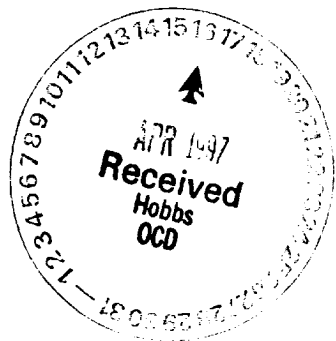
ELEVATION 3655

OPERATOR RAND PAULSON OIL COMPANY

LEASE SUMMERS-NEAL

**JOHN WEST ENGINEERING
HOBBS, NEW MEXICO**

(505) 393-3117



DISTRICT I
P.O. Box 1980, Hobbs, NM 88241-1980

DISTRICT II
P.O. Drawer DD, Artesia, NM 88211-0718

DISTRICT III
1000 Rio Brazos Rd., Aztec, NM 87410

DISTRICT IV
P.O. BOX 2088, SANTA FE, N.M. 87504-2088

State of New Mexico
Energy, Minerals and Natural Resources Department

Form C-102
Revised February 10, 1994
Submit to Appropriate District Office
State Lease - 4 Copies
Fee Lease - 3 Copies

OIL CONSERVATION DIVISION
P.O. Box 2088
Santa Fe, New Mexico 87504-2088

AMENDED REPORT

WELL LOCATION AND ACREAGE DEDICATION PLAT

API Number 30-025-33925	Pool Code 36480	Pool Name South Knowles (Devonian)
Property Code 2065D	Property Name SUMMERS-NEAL	Well Number 2
OGRID No. 159123	Operator Name RAND PAULSON OIL COMPANY	Elevation 3655

Surface Location

UL or lot No.	Section	Township	Range	Lot Idn	Feet from the	North/South line	Feet from the	East/West line	County
G	18	17 S	39 E		2040	NORTH	2040	EAST	LEA

Bottom Hole Location If Different From Surface

UL or lot No.	Section	Township	Range	Lot Idn	Feet from the	North/South line	Feet from the	East/West line	County

Dedicated Acres 80	Joint or Infill N	Consolidation Code	Order No.
------------------------------	-----------------------------	--------------------	-----------

NO ALLOWABLE WILL BE ASSIGNED TO THIS COMPLETION UNTIL ALL INTERESTS HAVE BEEN CONSOLIDATED OR A NON-STANDARD UNIT HAS BEEN APPROVED BY THE DIVISION



OPERATOR CERTIFICATION

I hereby certify the the information contained herein is true and complete to the best of my knowledge and belief.

[Signature]
Signature
O.H. Routh
Printed Name
Agent
Title
4-2-97
Date

SURVEYOR CERTIFICATION

I hereby certify that the well location shown on this plat was plotted from field notes of actual surveys made by me or under my supervision, and that the same is true and correct to the best of my belief.

MARCH 26, 1997
Date Surveyed
Signature & Seal of Professional Surveyor
[Signature]
Professional Surveyor
327-97
01-11-0573

Certificate No. JOHN W. WEST 676
RONALD J. EIDSON 3239
GARY EIDSON 12641

