

DISTRICT I  
P. O. Box 1980, Hobbs, NM 88240

DISTRICT II  
P. O. Drawer DD, Artesia, NM 88210

DISTRICT III  
1000 Rio Brazos Rd., Aztec, NM 87410

DISTRICT IV  
P. O. Box 2088, Santa Fe, NM 87504-2088

State of New Mexico  
Energy, Minerals and Natural Resources Department

OIL CONSERVATION DIVISION

PO Box 2088  
Santa Fe, NM 87504-2088

Form C-102  
Revised February 10, 1994

Instructions on back

Submit to Appropriate District Office

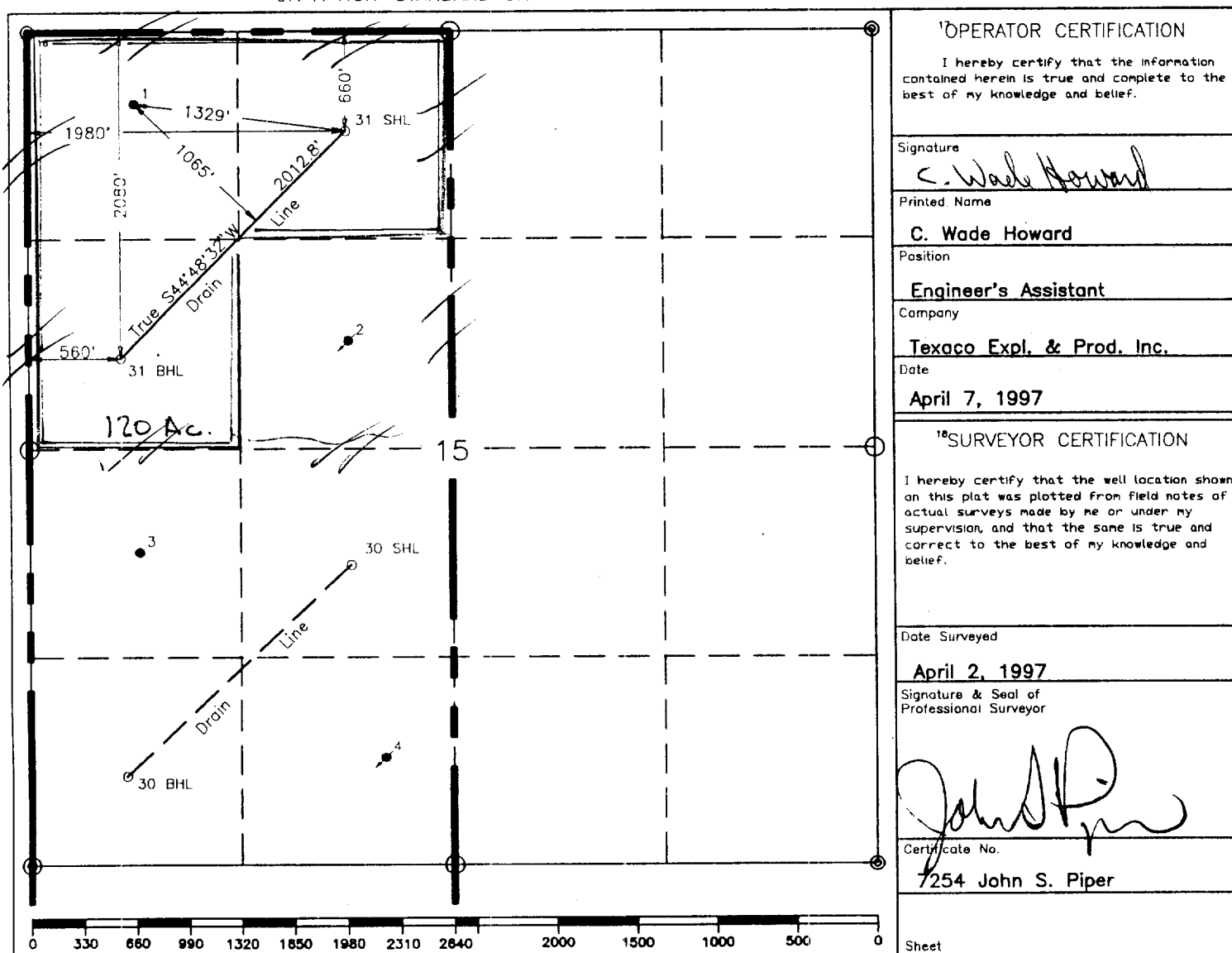
State Lease-4 copies  
Fee Lease-3 copies

☐ AMENDED REPORT

WELL LOCATION AND ACREAGE DEDICATION PLAT

<sup>1</sup> API Number <b>30-025-33988</b>		<sup>2</sup> Pool Code <b>61760</b>		<sup>3</sup> Pool Name <b>Vacuum Abo, North</b>				
<sup>4</sup> Property Code <b>11123</b>		<sup>5</sup> Property Name <b>North Vacuum Abo West Unit</b>			<sup>6</sup> Well Number <b>31</b>			
<sup>7</sup> GRID No. <b>22351</b>		<sup>8</sup> Operator Name <b>TEXACO EXPLORATION &amp; PRODUCTION, INC.</b>			<sup>9</sup> Elevation <b>4052'</b>			
<sup>10</sup> Surface Location								
UL or lot no. <b>C</b>	Section <b>15</b>	Township <b>17-S</b>	Range <b>34-E</b>	Lot ldn <b>660'</b>	Feet from the <b>North</b>	North/South line <b>1980'</b>	Feet from the <b>West</b>	East/West line <b>Lea</b>
<sup>11</sup> Bottom Hole Location If Different From Surface								
UL or lot no. <b>E</b>	Section <b>15</b>	Township <b>17-S</b>	Range <b>34-E</b>	Lot ldn <b>2080'</b>	Feet from the <b>North</b>	North/South line <b>560'</b>	Feet from the <b>West</b>	East/West line <b>Lea</b>
<sup>12</sup> Dedicated Acres <b>120 160</b>		<sup>13</sup> Joint or Infill		<sup>14</sup> Consolidation Code		<sup>15</sup> Order No. <b>DD-173&lt;H&gt;</b>		

NO ALLOWABLE WILL BE ASSIGNED TO THIS COMPLETION UNTIL ALL INTERESTS HAVE BEEN CONSOLIDATED  
OR A NON-STANDARD UNIT HAS BEEN APPROVED BY THE DIVISION.



○ = Staked Location ● = Producing Well ◆ = Injection Well ◇ = Water Supply Well \* = Plugged & Abandon Well