

District I
PO Box 1980, Hobbs, NM 88241-1980
District II
PO Drawer DD, Artesia, NM 88211-0719
District III
1000 Rio Brazos Rd., Aztec, NM 87410
District IV
PO Box 2088, Santa Fe, NM 87504-2088

State of New Mexico
Energy, Minerals & Natural Resources Department

OIL CONSERVATION DIVISION
P.O. Box 2088
Santa Fe, NM 87504-2088

Form C-101

Revised February 10, 1994

Instructions on back
Submit to Appropriate District Office
State Lease - 6 Copies
Fee Lease - 5 Copies

☐ AMENDED REPORT

APPLICATION FOR PERMIT TO DRILL, RE-ENTER, DEEPEN, PLUGBACK, OR ADD A ZONE

¹ Operator name and Address ALTURA ENERGY LTD. WCK5236, P O BOX 4294 HOUSTON TX 77210-4294		² OGRID Number 157984
		³ API Number 30-025 34020
⁴ Property Code 19549	⁵ Property Name STATE BG	⁶ Well Number 2

⁷ Surface Location

UL or lot no.	Section	Township	Range	Lot. Idn	Feet from the	North/South Line	Feet from the	East/West line	County
J	19	17S	35E		1780	SOUTH	1810	EAST	LEA

⁸ Proposed Bottom Hole Location If Different From Surface

UL or lot no.	Section	Township	Range	Lot. Idn	Feet from the	North/South Line	Feet from the	East/West line	County

⁹ Proposed Pool 1

¹⁰ Proposed Pool 2

VACUUM ATOKA-MORROW, NORTH (GAS)

¹¹ Work Type Code N	¹² Well Type Code G	¹³ Cable/Rotary R	¹⁴ Lease Type Code S	¹⁵ Ground Level Elevation 3985
¹⁶ Multiple N	¹⁷ Proposed Depth 12,500'	¹⁸ Formations ATOKA-MORROW	¹⁹ Contractor NORTON	²⁰ Spud Date 06-14-97

²¹ Proposed Casing and Cement Program

Hole Size	Casing Size	Casing weight/foot	Setting Depth	Sacks of Cement	Estimated TOC
24"	20"	CONDUCTOR	40'	60 SKS	SURFACE
14-3/4"	11-3/4"	42#	1800	1200 SKS	SURFACE
11"	8-5/8"	32# 14#	5000'	1900 SKS	SURFACE
7-7/8"	5-1/2"	17#, 20#	12,500'	2010 SKS	3500'

²² Describe the proposed program. If this application is to DEEPEN or PLUG BACK give the data on the present productive zone and proposed new productive zone. Describe the blowout prevention program, if any. Use additional sheets if necessary

BOP PROGRAM: 3000# RAM PREVENTOR.

²³ I hereby certify that the information given above is true and complete to the best of my knowledge and belief

Signature:

Printed name: **JEFF A DETHROW CPL**

Title: **CONTRACT LANDMAN**

Date:
06-11-97

Phone:
(713) 544-3226

OIL CONSERVATION DIVISION

Approved by:

Title: **ORIGINAL SIGNED BY CHRIS WILLIAMS**
DISTRICT I SUPERVISOR

Approval Date: **JUN 13 1997**

Expiration Date:

Conditions of Approval:

Attached ☐

DISTRICT I
P.O. Box 1960, Hobbs, NM 88241-1960

DISTRICT II
P.O. Drawer DD, Artesia, NM 88211-0719

DISTRICT III
1000 Rio Brazos Rd., Aztec, NM 87410

DISTRICT IV
P.O. Box 2088, Santa Fe, NM 87504-2088

State of New Mexico
Energy, Minerals and Natural Resources Department

Form C-102
Revised February 10, 1994
Submit to Appropriate District Office
State Lease - 4 Copies
Fee Lease - 3 Copies

OIL CONSERVATION DIVISION

P.O. Box 2088
Santa Fe, New Mexico 87504-2088

☐ AMENDED REPORT

WELL LOCATION AND ACREAGE DEDICATION PLAT

API Number 30-025- 34020	Pool Code 86800	Pool Name VACUUM ATOKA-MORROW, NORTH (GAS)
Property Code 19549	Property Name STATE BG	Well Number 2
OGRID No. 157984	Operator Name ALTURA ENERGY LTD.	Elevation 3985

Surface Location

UL or lot No.	Section	Township	Range	Lot Idn	Feet from the	North/South line	Feet from the	East/West line	County
J	19	17 S	35 E		1780	SOUTH	1810	EAST	LEA

Bottom Hole Location If Different From Surface

UL or lot No.	Section	Township	Range	Lot Idn	Feet from the	North/South line	Feet from the	East/West line	County
Dedicated Acres 320	Joint or Infill	Consolidation Code	Order No.						

NO ALLOWABLE WILL BE ASSIGNED TO THIS COMPLETION UNTIL ALL INTERESTS HAVE BEEN CONSOLIDATED
OR A NON-STANDARD UNIT HAS BEEN APPROVED BY THE DIVISION

LOT 1 37.66 AC.			
LOT 2 37.68 AC.			
LOT 3 37.68 AC.			
LOT 4 37.70 AC.			

1780'

1810'

OPERATOR CERTIFICATION

I hereby certify the the information contained herein is true and complete to the best of my knowledge and belief.

Signature

JEFF A DETHROW

Printed Name

CONTRACT LANDMAN

Title

06-11-97

Date

SURVEYOR CERTIFICATION

I hereby certify that the well location shown on this plat was plotted from field notes of actual surveys made by me or under my supervision, and that the same is true and correct to the best of my belief.

JUNE 4, 1997

Date Surveyed

Signature & Seal of Professional Surveyor

JOHN G. EIDSON

3239

06-06-97

P.O. Num 97-1168940

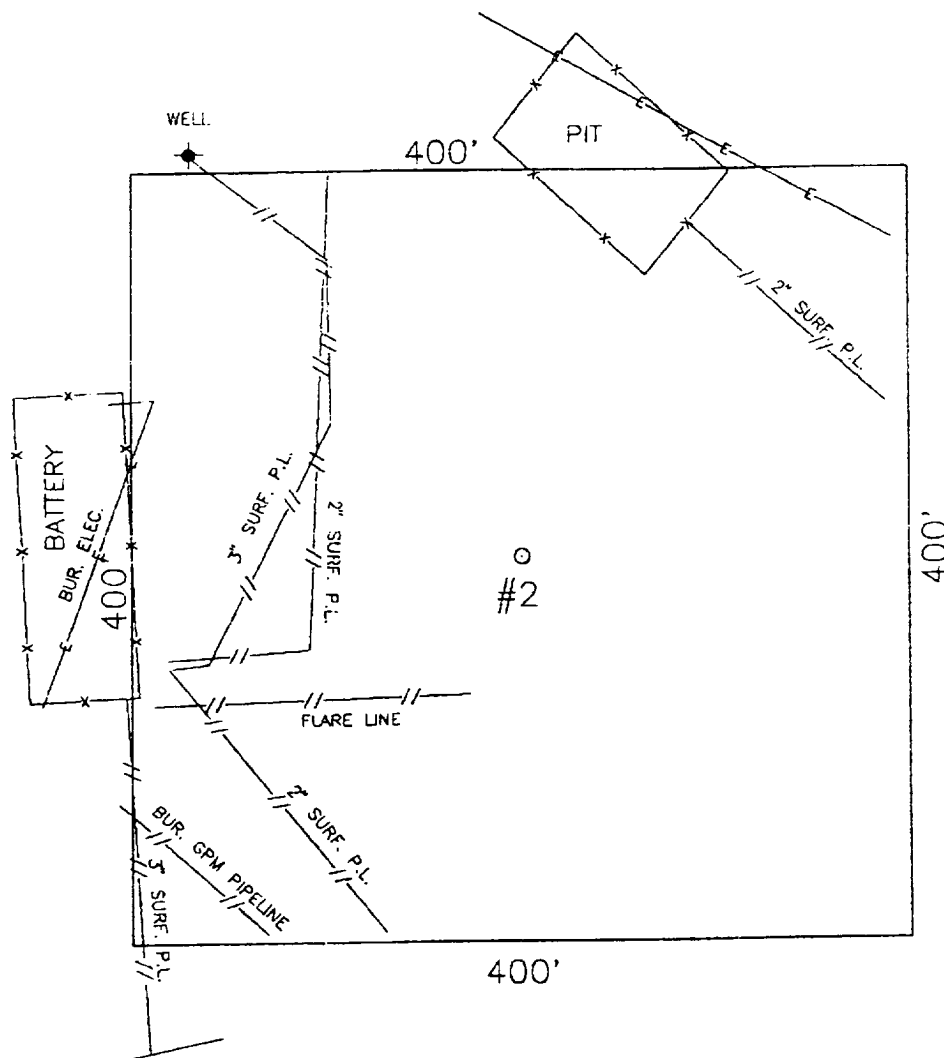
Certified by

JOHN G. EIDSON, 676

JOHN G. EIDSON, 3239

JOHN G. EIDSON, 12641

SECTION 19, TOWNSHIP 17 SOUTH, RANGE 35 EAST, N.M.P.M.,
LEA COUNTY NEW MEXICO



100 0 100 200 FEET
SCALE: 1"=100'

ALTUR ENERGY Ltd.

State BG No. 2

LOCATED 1780 FEET FROM
THE SOUTH LINE AND 1810 FEET FROM THE EAST
LINE OF SECTION 19, TOWNSHIP 17 SOUTH,
RANGE 35 EAST, N.M.P.M., LEA COUNTY, NEW MEXICO.

I HEREBY CERTIFY THAT I CONDUCTED AND AM
RESPONSIBLE FOR THIS SURVEY, THAT THIS
SURVEY IS TRUE AND CORRECT TO THE BEST
OF MY KNOWLEDGE AND BELIEF, AND THAT
THIS SURVEY AND PLAT MEET THE MINIMUM
STANDARDS FOR SURVEYING IN NEW MEXICO.

Donald J. Edson 6-06-97
No. 3239

RONALD J. EDSON, N.M. R.P.S. No. 12641
DONALD J. EDSON, N.M. R.P.S. No. 12641

JOHN W. WEST ENGINEERING COMPANY
CONSULTING ENGINEERS & SURVEYORS - HOBBS, NEW MEXICO

Survey Date: 6/4/97

Sheet 1 of 1 Sheets

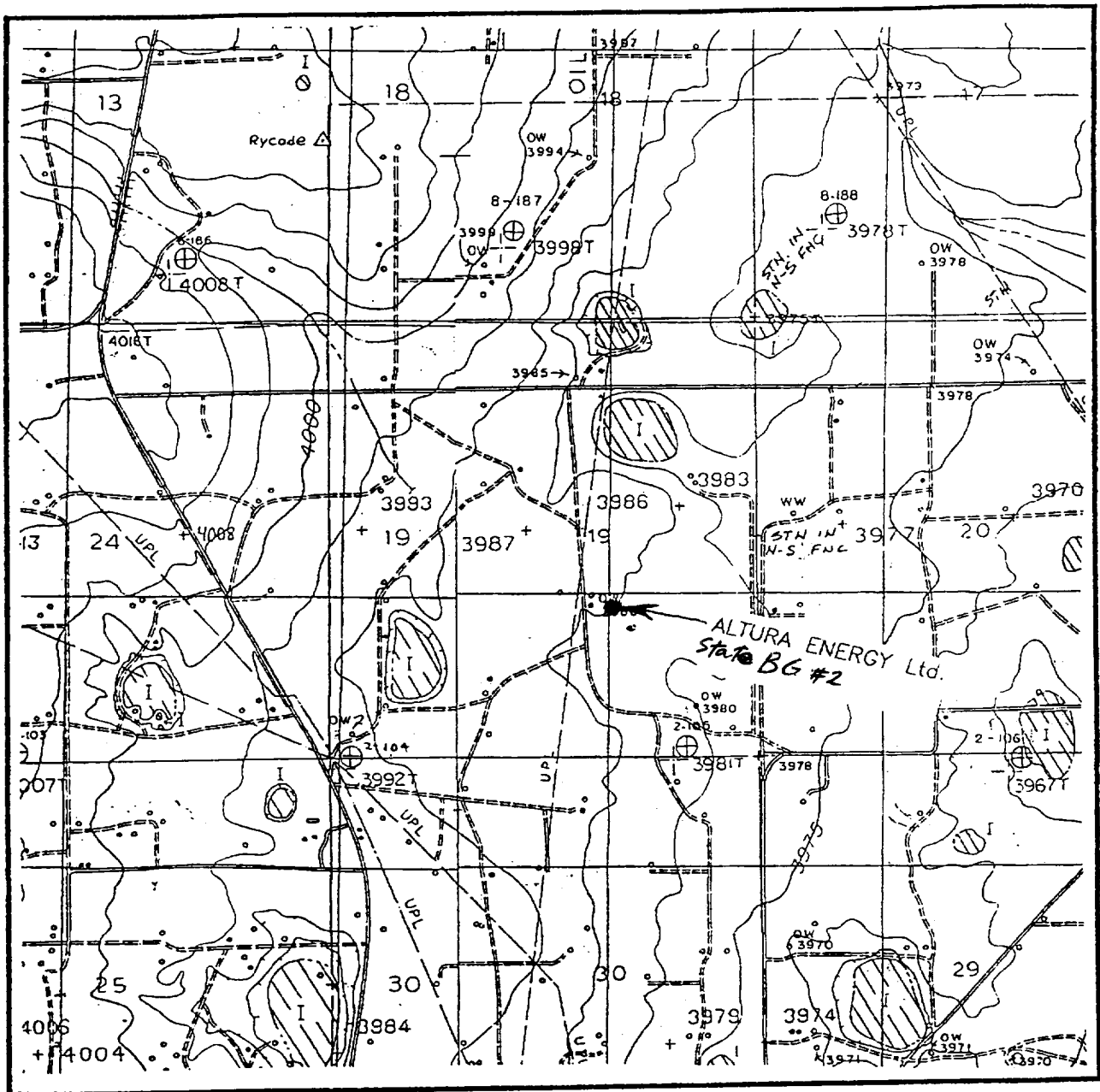
W.O. Number: 97-11-0940

Drawn By: JAMES L. PRESLEY

Date: 6/5/97 Disk:

ALT0940

LOCATION VERIFICATION MAP



SCALE: 1" = 2000'

CONTOUR INTERVAL - 5'

SEC. 19 TWP. 17-S RGE. 35-E

SURVEY N.M.P.M.

COUNTY LEA

DESCRIPTION 1780' FSL & 1810' FEL

ELEVATION 3985'

OPERATOR ALTURA ENERGY Ltd.

LEASE State BIG GREEN

U.S.G.S. TOPOGRAPHIC MAP

BUCKEYE & LOVINGTON SW N.M.

JOHN WEST ENGINEERING
HOBBS, NEW MEXICO
(505) 393-3117