

DISTRICT I
P.O. Box 1980, Hobbs, NM 88241-1980

DISTRICT II
P.O. Drawer DD, Artesia, NM 88211-0719

DISTRICT III
1000 Rio Brazos Rd., Aztec, NM 87410

DISTRICT IV
P.O. BOX 2088, SANTA FE, N.M. 87504-2088

State of New Mexico
Energy, Minerals and Natural Resources Department

Form C-102
Revised February 10, 1994
Submit to Appropriate District Office
State Lease - 4 Copies
Fee Lease - 3 Copies

OIL CONSERVATION DIVISION
P.O. Box 2088
Santa Fe, New Mexico 87504-2088

☐ AMENDED REPORT

WELL LOCATION AND ACREAGE DEDICATION PLAT

API Number 30025 34495		Pool Code 96580	Pool Name Midway Upper Penn West	
Property Code 23634	Property Name SOUTH SHOEBAR 15 STATE			Well Number 1
OGRID No. 166111	Operator Name CONCHO RESOURCES INC.			Elevation 3950

Surface Location

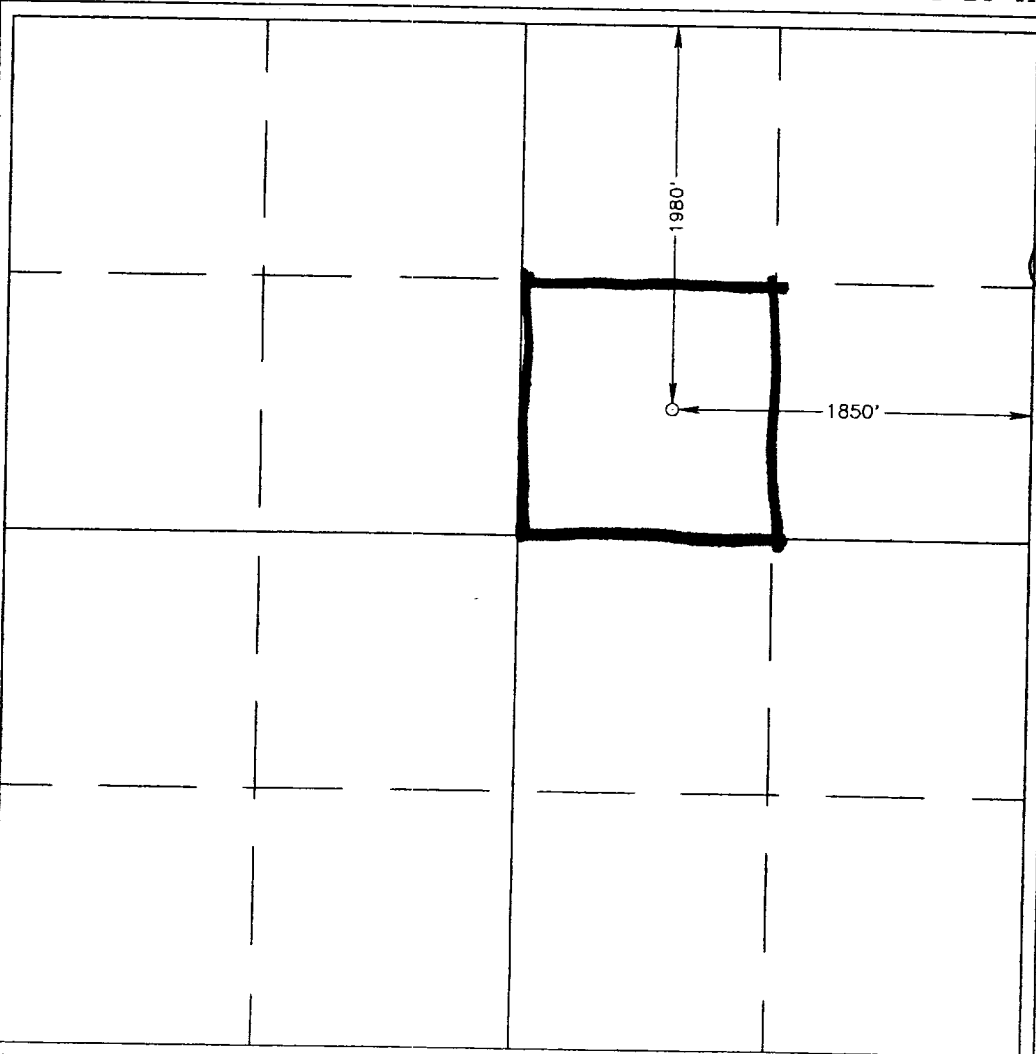
UL or lot No. G	Section 15	Township 17 S	Range 35 E	Lot Idn	Feet from the 1980	North/South line NORTH	Feet from the 1850	East/West line EAST	County LEA
--------------------	---------------	------------------	---------------	---------	-----------------------	---------------------------	-----------------------	------------------------	---------------

Bottom Hole Location If Different From Surface

UL or lot No.	Section	Township	Range	Lot Idn	Feet from the	North/South line	Feet from the	East/West line	County
---------------	---------	----------	-------	---------	---------------	------------------	---------------	----------------	--------

Dedicated Acres 40	Joint or Infill	Consolidation Code	Order No.
-----------------------	-----------------	--------------------	-----------

NO ALLOWABLE WILL BE ASSIGNED TO THIS COMPLETION UNTIL ALL INTERESTS HAVE BEEN CONSOLIDATED
OR A NON-STANDARD UNIT HAS BEEN APPROVED BY THE DIVISION



OPERATOR CERTIFICATION

I hereby certify the the information
contained herein is true and complete to the
best of my knowledge and belief.

TERRI STATHEN
Signature

TERRI STATHEN

Printed Name

PRODUCTION ANALYST

Title

9/8/99

Date

SURVEYOR CERTIFICATION

I hereby certify that the well location shown
on this plat was plotted from field notes of
actual surveys made by me or under my
supervision, and that the same is true and
correct to the best of my belief.

AUGUST 28, 1998

Date Surveyed

DMCC

Signature & Seal

Professional Surveyor

RONALD J. EIDSON

3239

8-28-98

88-11-1195

Certificate No. RONALD J. EIDSON 3239
GARY EIDSON 12641
MACON McDONALD 12185

