

**DISTRICT I**

P.O. Box 1980, Hobbs, NM 88241-1980

**DISTRICT II**

P.O. Box Drawer DD, Artesia, NM 88211-0719

**DISTRICT III**

1000 Rio Brazos Rd., Aztec, NM 87410

**DISTRICT IV**

P.O. Box 2088, Santa Fe, NM 87504-2088

**State of New Mexico**

Energy, Minerals and Natural Resources Department

Form C-101

Revised February 10, 1994

Instructions on back

Submit to Appropriate District Office

State Lease - 6 Copies

Fee Lease - 5 Copies

**OIL CONSERVATION DIVISION**

P.O. Box 2088

Santa Fe, New Mexico 87504-2088

☐ AMENDED REPORT**APPLICATION FOR PERMIT TO DRILL, RE-ENTER, DEEPEN, PLUGBACK, OR ADD A ZONE**

<sup>1</sup> Operator Name and Address TEXACO EXPLORATION & PRODUCTION INC. P.O. Box 3109, Midland Texas 79702		<sup>2</sup> OGRID Number 022351
<sup>4</sup> Property Code 11122	<sup>5</sup> Property Name CENTRAL VACUUM UNIT	<sup>3</sup> API Number 50-025-34540 <sup>6</sup> Well No. 280

**7 Surface Location**

UI or lot no.	Section	Township	Range	Lot.Idn	Feet From The	North/South Line	Feet From The	East/West Line	County
L	36	17-S	34-E		2038	SOUTH	10	WEST	LEA

**8 Proposed Bottom Hole Location If Different From Surface**

UI or lot no.	Section	Township	Range	Lot.Idn	Feet From The	North/South Line	Feet From The	East/West Line	County
---------------	---------	----------	-------	---------	---------------	------------------	---------------	----------------	--------

<sup>9</sup> Proposed Pool 1 Vacuum Grayburg - San Andres	<sup>10</sup> Proposed Pool 2
--	-------------------------------

<sup>11</sup> Work Type Code N	<sup>12</sup> WellType Code O	<sup>13</sup> Rotary or C.T. ROTARY	<sup>14</sup> Lease Type Code S	<sup>15</sup> Ground Level Elevation 3998'
<sup>16</sup> Multiple No	<sup>17</sup> Proposed Depth 4850'	<sup>18</sup> Formation GRAYBURG-SAN ANDRES	<sup>19</sup> Contractor	<sup>20</sup> Spud Date 12/10/98

**21 Proposed Casing and Cement Program**

SIZE OF HOLE	SIZE OF CASING	WEIGHT PER FOOT	SETTING DEPTH	SACKS OF CEMENT	EST. TOP
11"	8 5/8"	24#	1550'	550 SACKS	SURFACE
7 7/8"	5 1/2"	15.5#	4850'	900 SACKS	SURFACE

22 Describe the proposed program. If this application is to DEEPEN or PLUG BACK give the data on the present productive zone and proposed new productive zone. Describe the blowout prevention program, if any. Use additional sheets if necessary.

**CEMENTING PROGRAM:**

SURFACE CASING: 400 SACKS CLASS C W/2% GEL, 2% CACL2 (13.5 PPG, 1.74 CF/S, 9.1 GW/S). F/B 150 SACKS CLASS C W/2% CACL2 (14.8 PPG, 1.34 CF/S, 6.3 GW/S).

PRODUCTION CASING: 800 SACKS 35/65 POZ CLASS H W/6% GEL, 5% SALT, 1/4# FLOCELE (12.8 PPG, 1.94 CF/S, 10.4 GW/S). F/B 100 SACKS CLASS H (15.6 PPG, 1.1.8 CF/S, 5.2 GW/S).

UNORTHODOX LOCATION: EXCEPTION HAS BEEN APPROVED. ADMINISTRATIVE ORDER NSL-4167 ATTACHED.

THERE ARE NO OTHER OPERATORS IN THIS QUARTER QUARTER SECTION.

Permit Expires 1 Year From Approval  
Date Unless Drilling Underway

23 I hereby certify that the rules and regulations of the Oil Conservation Division have been complied with and that the information given above is true and complete to the best of my knowledge and belief.

Signature

*A. Phil Ryan*

Printed Name

*A. Phil Ryan*

Title

*Commission Coordinator*

Date

12/3/98

Telephone

688-4606

**OIL CONSERVATION DIVISION**

Approved By:

Orig. Signed by  
*Pam Kantz*  
Geologist

Title:

Approval Date

*DEC 04 1998*

Expiration Date:

Conditions of Approval:

Attached ☐

DISTRICT I  
P. O. Box 1980, Hobbs, NM 88240

DISTRICT II  
P. O. Drawer DD, Artesia, NM 88210

DISTRICT III  
1000 Rio Brazos Rd., Aztec, NM 87410

DISTRICT IV  
P. O. Box 2088, Santa Fe, NM 87504-2088

State of New Mexico  
Energy, Minerals and Natural Resources Department

OIL CONSERVATION DIVISION  
PO Box 2088  
Santa Fe, NM 87504-2088

Form C-102  
Revised February 10, 1994

Instructions on back

Submit to Appropriate District Office

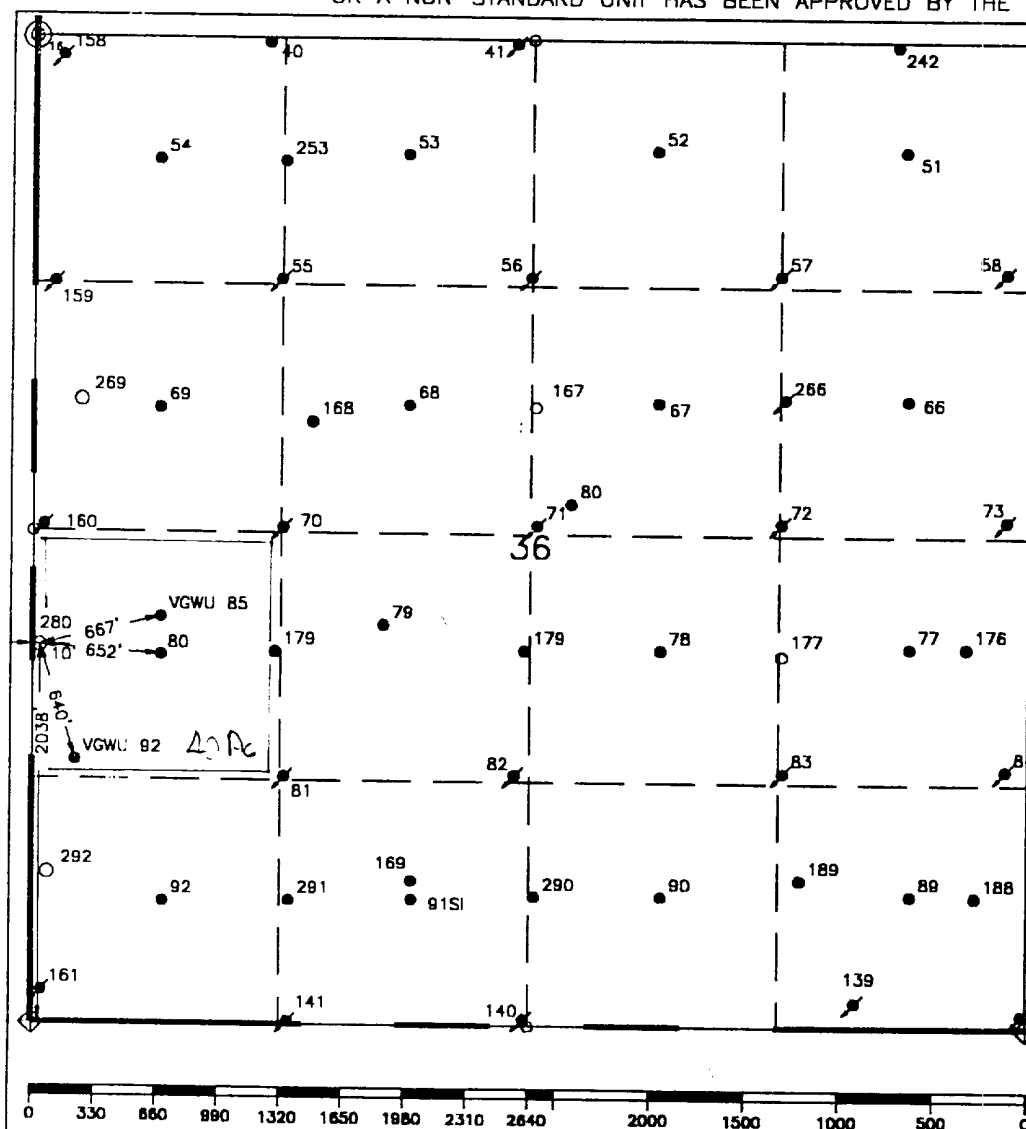
State Lease-4 copies  
Fee Lease-3 copies

WELL LOCATION AND ACREAGE DEDICATION PLAT

☐ AMENDED REPORT

1 API Number 20-075-34540		2 Pool Code 62180		3 Pool Name Vacuum Grayburg/San Andres					
4 Property Code 11122		5 Property Name Central Vacuum Unit				6 Well Number 280			
7 OGRID No. 22351		8 Operator Name TEXACO EXPLORATION & PRODUCTION, INC.				9 Elevation 3998'			
10 Surface Location									
UL or lot no. L	Section 36	Township 17-S	Range 34-E	Lot Idn	Feet from the 2038'	North/South line South	Feet from the 10'	East/West line West	County Lea
11 Bottom Hole Location If Different From Surface									
UL or lot no.	Section	Township	Range	Lot Idn	Feet from the	North/South line	Feet from the	East/West line	County
12 Dedicated Acres 40		13 Joint or Infill		14 Consolidation Code		15 Order No.			

NO ALLOWABLE WILL BE ASSIGNED TO THIS COMPLETION UNTIL ALL INTERESTS HAVE BEEN CONSOLIDATED  
OR A NON-STANDARD UNIT HAS BEEN APPROVED BY THE DIVISION.



16 OPERATOR CERTIFICATION	
I hereby certify that the information contained herein is true and complete to the best of my knowledge and belief.	
Signature C. Wade Howard	
Printed Name C. Wade Howard	
Position Engineer's Assistant	
Company Texaco Expl. & Prod. Inc.	
Date August 4, 1997	
17 SURVEYOR CERTIFICATION	
I hereby certify that the well location shown on this plat was plotted from field notes of actual surveys made by me or under my supervision, and that the same is true and correct to the best of my knowledge and belief.	
Date Surveyed July 30, 1997	
Signature & Seal of Professional Surveyor John S. Piper	
Certificate No. 7254 John S. Piper	
Sheet	

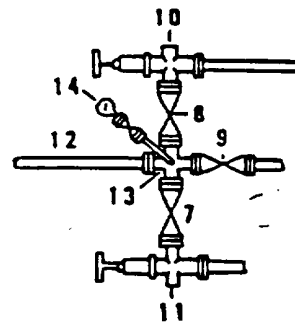
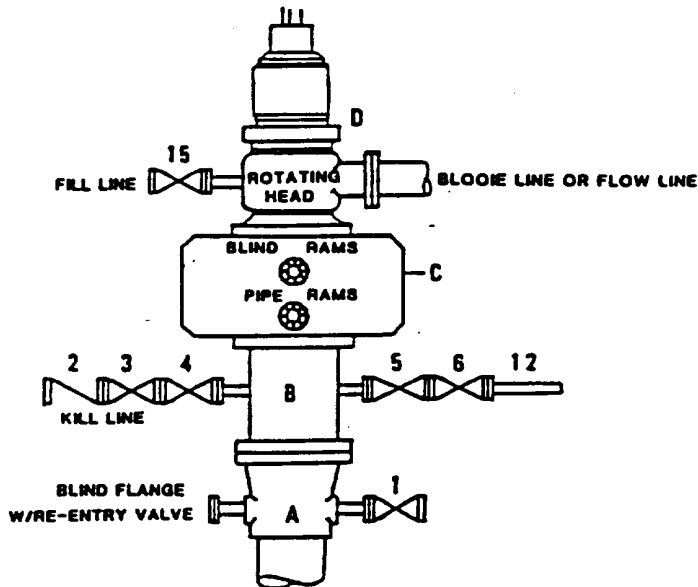
○ = Staked Location ● = Producing Well ✕ = Injection Well ◇ = Water Supply Well ◆ = Plugged & Abandon Well  
⊙ = Found Section Corner, 2 or 3" Iron Pipe & GLO B.C. ○ = Found 1/4 Section Corner, 1" Iron Pipe & GLO B.C.

ADDITIONAL INFORMATION ON THE LOCATION

State Plane Coordinates			
Northing 652017.65		Easting 790493.50	
Latitude 32°47'23.294"		Longitude 103°31'21.208"	
Zone	North American Datum	Combined Grid Factor	Coordinate File
East	1983	0.99979145	Buckeye.cr5
Drawing File		Field Book	
CVU_280.dwg		Lea Co. 16, Pg. 76	

**DRILLING CONTROL  
CONDITION II-B 3000 WP  
FOR AIR DRILLING OR  
WHERE NITROGEN OR AIR BLOWS ARE EXPECTED**

H<sub>2</sub>S TRIM REQUIRED  
YES \_\_\_\_\_ NO X



**DRILLING CONTROL**

**MATERIAL LIST - CONDITION II - B**

- A      Texaco Wellhead
- B      3000# W.P. drilling spool with a 2" minimum flanged outlet for kill line and 3" minimum flanged outlet for choke line.
- C      3000# W.P. Dual ram type preventer, hydraulic operated with 1" steel, 3000# W.P. control lines (where sub-structure height is adequate, 2 - 3000# W.P. single ram type preventers may be utilized).
- D      Rotating Head with fill up outlet and extended Blooe Line.
- 1,3,4, 7,8,      2" minimum 3000# W.P. flanged full opening steel gate valve, or Halliburton Lo Torc Plug valve.
- 2      2" minimum 3000# W.P. back pressure valve.
- 5,6,9      3" minimum 3000# W.P. flanged full opening steel gate valve, or Halliburton Lo Torc Plug valve.
- 12      3" minimum schedule 80, Grade "B", seamless line pipe.
- 13      2" minimum x 3" minimum 3000# W.P. flanged cross.
- 10,11      2" minimum 3000# W.P. adjustable choke bodies.
- 14      Cameron Mud Gauge or equivalent ( location optional in choke line).
- 15      2" minimum 3000# W.P. flanged or threaded full opening steel gate valve, or Halliburton Lo Torc Plug valve.



**TEXACO, INC.**  
MIDLAND DIVISION  
MIDLAND, TEXAS



SCALE	DATE	EST. NO.	DRG. NO.
DRAWN BY			
CHECKED BY			
APPROVED BY			

EXHIBIT C