

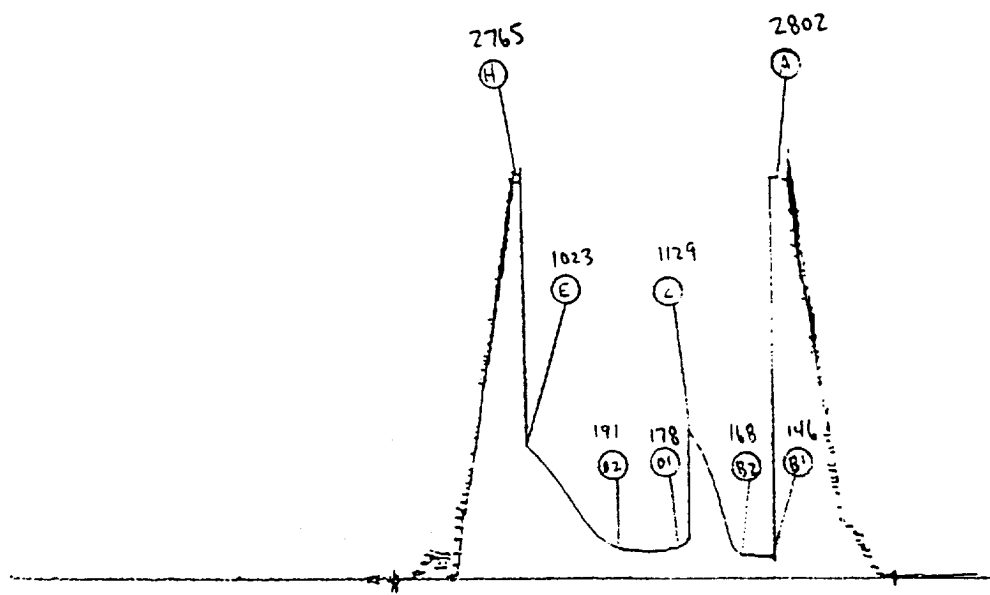
PATTERSON PETROLEUM, INC.



TOMAHAWK STATE "19" # 1
D.S.T. NO. : 1

		CORRECTED READING	FIELD READING
A	INITIAL HYDROSTATIC:	2802 PSI	2902 PSI
B-1	INITIAL FIRST FLOW :	146 PSI	142 PSI
B-2	FINAL FIRST FLOW :	168 PSI	155 PSI
C	FIRST SHUT-IN :	1129 PSI	995 PSI
D-1	INITIAL SECOND FLOW:	178 PSI	233 PSI
D-2	FINAL SECOND FLOW :	191 PSI	181 PSI
E	SECOND SHUT-IN :	1023 PSI	930 PSI
H	FINAL HYDROSTATIC :	2765 PSI	2863 PSI

TKF-20502 REC-11026 WT-5025
AK-1 KUSTER 18 HR. CLOCK
TOP RECORDER INSIDE



RECOVERY DATA

PIPE RECOVERY

B.H. TEMP. (deg F) : 112

SAMPLE CHAMBER

120 FT. OF GAS IN COLLARS
205 FT. OF TOTAL FLUID
5 FT. OF FREE OIL
200 FT. OF FILTRATE WATER
10,000 MG/L CHLORIDES - 0.770 OHMS @ 85 DEGREES

170 LBS. OF PRESSURE
0.03 CU. FT. OF GAS
60 CC'S FREE OIL
20 CC'S OF OIL CIT MUD
1800 CC'S OF FILTRATE WATER
10,000 MG/L CHLORIDES
0.770 OHMS @ 85 DEGREES

TEST REMARKS

TOOL OPENED WITH A VERY WEAK SURGING BLOW AT TOP OF WATER THROUGHOUT THE 30 MIN. FIRST FLOW PERIOD. REOPENED TOOL WITH NO BLOW FOR 45 MIN. THEN BEGAN VERY WEAK SURGING BLOW FOR REMAINDER OF THE 60 MIN. FINAL FLOW PERIOD.