

District I
PO Box 1980, Hobbs, NM 88241-1980
District II
PO Drawer DD, Artesia, NM 88211-0719
District III
1000 Rio Brazos Rd., Aztec, NM 87410
District IV
PO Box 2088, Santa Fe, NM 87504-2088

State of New Mexico
Energy, Minerals & Natural Resources Department

OIL CONSERVATION DIVISION
PO Box 2088
Santa Fe, NM 87504-2088

Form C-101
Revised February 10, 1994
Instructions on back
Submit to Appropriate District Office
State Lease - 6 Copies
Fee Lease - 5 Copies

☒ AMENDED REPORT

APPLICATION FOR PERMIT TO DRILL, RE-ENTER, DEEPEN, PLUGBACK, OR ADD A ZONE

¹ Operator Name and Address. LOUIS DREYFUS NATURAL GAS CORP. 14000 QUAIL SPRINGS PARKWAY, SUITE 600 OKLAHOMA CITY, OK 73134		¹ OGRID Number 228125 25773
⁴ Property Code 24679	⁴ Property Name TORO 27 STATE COM.	¹ API Number 30-025-34638
		⁴ Well No. 1

⁷ Surface Location

UL or lot no.	Section	Township	Range	Lot Idn	Feet from the	North/South line	Feet from the	East/West line	County
K	27	19S	35E		1650	South	1650	West	Lea

⁸ Proposed Bottom Hole Location If Different From Surface

UL or lot no.	Section	Township	Range	Lot Idn	Feet from the	North/South line	Feet from the	East/West line	County
⁹ Proposed Pool 1 16/12cat Morrow					¹⁰ Proposed Pool 2				

¹¹ Work Type Code	¹² Well Type Code	¹³ Cable/Rotary	¹⁴ Lease Type Code	¹⁵ Ground Level Elevation
N	G	R	S	3720'
¹⁶ Multiple	¹⁷ Proposed Depth	¹⁸ Formation	¹⁹ Contractor	²⁰ Spud Date
No	13,500'	Morrow		6/21/99

²¹ Proposed Casing and Cement Program

Hole Size	Casing Size	Casing weight/foot	Setting Depth	Sacks of Cement	Estimated TOC
17 1/2"	13 3/8"	54.5# J-55	620'	490	Surface
12 1/4"	9 5/8"	36# J-55	5300'	2610	Surface
7 7/8"	5 1/2"	17# P-110	13500'	800	9500'

²² Describe the proposed program. If this application is to DEEPEN or PLUG BACK give the data on the present productive zone and proposed new productive zone. Describe the blowout prevention program, if any. Use additional sheets if necessary. See attached "Exhibit 6" for BOP assembly.

1. Drill 17 1/2" hole to $\pm 620'$. Run 13 3/8" csg. and cement to surface w/335 sks.
35/65/6% gel + 2 CaCl + .25# celloflake, 12.4 ppg, 2.07 cf/sk. yld. Tail w/155 sks.
Cl. C + 2% CaCl, 14.8 ppg, 1.33 cf/sk. yld.
2. Drill 12 1/4" hole to $\pm 5300'$. Set 9 5/8" csg. and cement to surface w/2340 sks.
35/65/6% gel + 5% Salt + 1/4# celloflake, 12.8 ppg, 1.94 cf/sk. Tail w/270 sks.
Cl. C + 1% CaCl, 14.8 ppg, 1.33 cf/sk. yld.
3. Drill 7 7/8" hole to $\pm 13500'$. Run 5 1/2" csg. to TD and cement to $\pm 9500'$ w/800 sks. Cl. H + 2% B28 + .5 gps D-600 + .05 gps M45 + 0.1% D153 + 0.2% D800, 15.6 ppg, 1.2 cf/sk. yld.

²³ I hereby certify that the information given above is true and complete to the best of my knowledge and belief. Signature: <i>Terrye D. Bryant</i>		OIL CONSERVATION DIVISION	
Printed name: Terrye D. Bryant		Approved by: <i>[Signature]</i>	
Title: Regulatory Technician		Title: <i>[Signature]</i>	
Date: 6/3/99		Approval Date:	Expiration Date:
Phone: (405) 749-5287		Conditions of Approval: Attached <input type="checkbox"/>	

Permit Expires 1 Year From Approval
Date Unless Drilling Underway

5/24

DISTRICT I
P.O. Box 1980, Hobbs, NM 88240

DISTRICT II
P.O. Drawer DD, Artesia, NM 88210

DISTRICT III
1000 Rio Brazos Rd., Aztec, NM 87410

State of New Mexico
Energy, Minerals and Natural Resources Department

Form C-102
Revised February 10, 1994
Instruction on back
Submit to Appropriate District Office
State Lease - 4 Copies
Fee Lease - 3 Copies

OIL CONSERVATION DIVISION

P.O. Box 2088
Santa Fe, New Mexico 87504-2088

☒ AMENDED REPORT

WELL LOCATION AND ACREAGE DEDICATION PLAT

API Number 30-025-34638	Pool Code 96886	Pool Name W. Morrow
Property Code 24679	Property Name Toro "27" State Com.	Well Number 1
OGRID No. 025773	Operator Name Louis Dreyfus Natural Gas Corporation	Elevation 3720'

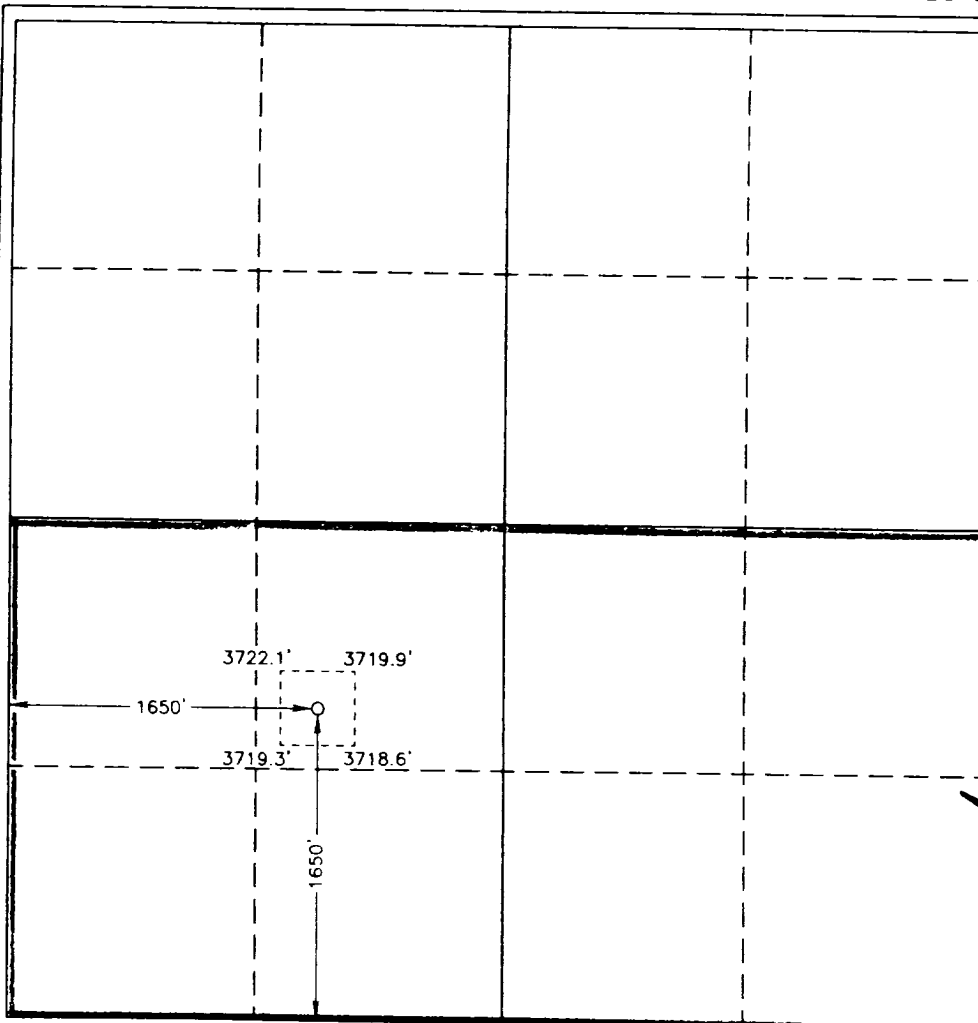
Surface Location

UL or lot No.	Section	Township	Range	Lot Idn	Feet from the	North/South line	Feet from the	East/West line	County
K	27	19 S	35 E		1650	South	1650	West	Lea

Bottom Hole Location If Different From Surface

UL or lot No.	Section	Township	Range	Lot Idn	Feet from the	North/South line	Feet from the	East/West line	County
Dedicated Acres 320	Joint or Infill N	Consolidation Code P	Order No.						

NO ALLOWABLE WILL BE ASSIGNED TO THIS COMPLETION UNTIL ALL INTERESTS HAVE BEEN CONSOLIDATED
OR A NON-STANDARD UNIT HAS BEEN APPROVED BY THE DIVISION



OPERATOR CERTIFICATION

I hereby certify the the information
contained herein is true and complete to the
best of my knowledge and belief

Gene Simer
Signature

Gene Simer
Printed Name

District Operations Mgr.
Title

May 27, 1999
Date

SURVEYOR CERTIFICATION

I hereby certify that the well location shown
on this plat was plotted from field notes of
actual surveys made by me or under my
supervision and that the same is true and
correct to the best of my belief.

May 25, 1999

Date Surveyed

Signature & Seal of
Professional Surveyor

[Signature]

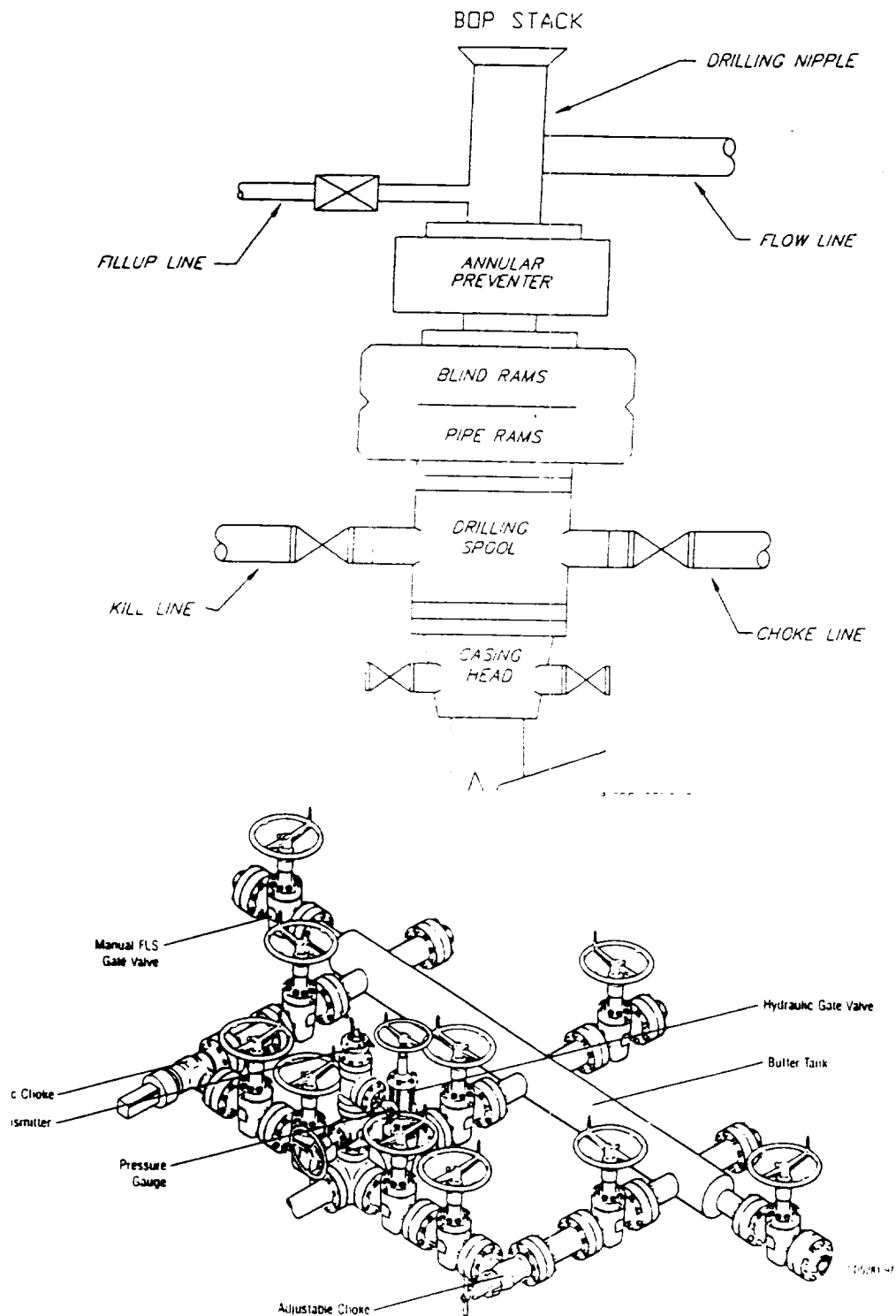
No. 9187

Certificate No. 666 L. Jones 7977

BASIN SURVEYS

Exhibit 6

TYPICAL 5,000 p.s.i. BLOWOUT PREVENTER & CHOKE MANIFOLD SCHEMATIC



Typical Choke Manifold Designed for Land Drilling Applications