

DISTRICT I

P.O. Box 1980, Hobbs, NM 88241-1980

DISTRICT II

P.O. Box Drawer DD, Artesia, NM 88211-0719

DISTRICT III

1000 Rio Brazos Rd., Aztec, NM 87410

DISTRICT IV

P.O. Box 2088, Santa Fe, NM 87504-2088

State of New Mexico

Energy, Minerals and Natural Resources Department

Form C-101

Revised February 10, 1994

Instructions on back

Submit to Appropriate District Office

State Lease - 6 Copies

Fee Lease - 5 Copies

OIL CONSERVATION DIVISION

P.O. Box 2088

Santa Fe, New Mexico 87504-2088

☐ AMENDED REPORT

APPLICATION FOR PERMIT TO DRILL, RE-ENTER, DEEPEN, PLUGBACK, OR ADD A ZONE

1 Operator Name and Address TEXACO EXPLORATION & PRODUCTION INC. P.O. Box 3109, Midland Texas 79702		2 OGRID Number 022351
4 Property Code 11123	5 Property Name NORTH VACUUM ABO WEST UNIT	3 API Number 30-025-34668
		6 Well No. 29

7 Surface Location

UI or lot no.	Section	Township	Range	Lot.Idn	Feet From The	North/South Line	Feet From The	East/West Line	County
O	21	17-S	34-E		365	SOUTH	1880	EAST	LEA

8 Proposed Bottom Hole Location If Different From Surface

UI or lot no.	Section	Township	Range	Lot.Idn	Feet From The	North/South Line	Feet From The	East/West Line	County
E	28	17-S	34-E		2180'	NORTH	660	WEST	LEA

9 Proposed Pool 1

VACUUM ABO, NORTH

10 Proposed Pool 2

11 Work Type Code N	12 WellType Code O	13 Rotary or C.T. ROTARY	14 Lease Type Code S	15 Ground Level Elevation 4065'
16 Multiple No	17 Proposed Depth 9000'	18 Formation ABO	19 Contractor NABORS	20 Spud Date 8/5/99

21 Proposed Casing and Cement Program

SIZE OF HOLE	SIZE OF CASING	WEIGHT PER FOOT	SETTING DEPTH	SACKS OF CEMENT	EST. TOP
11	8 5/8	24#	1630'	650 SACKS	SURFACE
7 7/8	5 1/2	17#	9000'	1400 SACKS	SURFACE

22 Describe the proposed program. If this application is to DEEPEN or PLUG BACK give the data on the present productive zone and proposed new productive zone. Describe the blowout prevention program, if any. Use additional sheets if necessary.

CEMENTING PROGRAM:

SURFACE CASING: 500 SACKS CLASS C w/4% GEL, 2% CC (13.5 PPG, 1.74 CF/S, 9.1 GW/S). F/B 150 SACKS CLASS C w/2% CC (14.8 PPG, 1.34 CF/S, 6.3 GW/S).

PRODUCTION CASING: 1300 SACKS 35/65 POZ H W/6% GEL, 5% SALT, 1/4# FC (12.4 PPG, 2.14 CF/S, 11.9 GW/S). F/B 100 SACKS CLASS H (15.6 PPG, 1.18 CF/S, 5.2 GW/S).

THERE ARE NO OTHER OPERATORS IN THIS QUARTER QUARTER SECTION.

Permit Expires 1 Year From Approval
Date Unless Drilling Underway

23 I hereby certify that the rules and regulations of the Oil Conservation Division have been complied with and that the information given above is true and complete to the best of my knowledge and belief.

Signature

A. Phil Ryan

Printed Name

A. Phil Ryan

Title

Commission Coordinator

Date 7/28/99

Telephone 688-4606

OIL CONSERVATION DIVISION

ORIGINAL SIGNED BY

Approved By: GARY WINK
FIELD REP. II

Title:

Approval Date: JUL 30 1999

Expiration Date:

Conditions of Approval:

Attached ☐

2512

UMP

DISTRICT I
P. O. Box 1980, Hobbs, NM 88240

DISTRICT II
P. O. Drawer DD, Artesia, NM 88210

DISTRICT III
1000 Rio Brazos Rd., Aztec, NM 87410

DISTRICT IV
P. O. Box 2088, Santa Fe, NM 87504-2088

State of New Mexico
Energy, Minerals and Natural Resources Department

OIL CONSERVATION DIVISION

PO Box 2088
Santa Fe, NM 87504-2088

Form C-102
Revised February 10, 1994

Instructions on back

Submit to Appropriate District Office

State Lease-4 copies

Fee Lease-3 copies

☐ AMENDED REPORT

WELL LOCATION AND ACREAGE DEDICATION PLAT

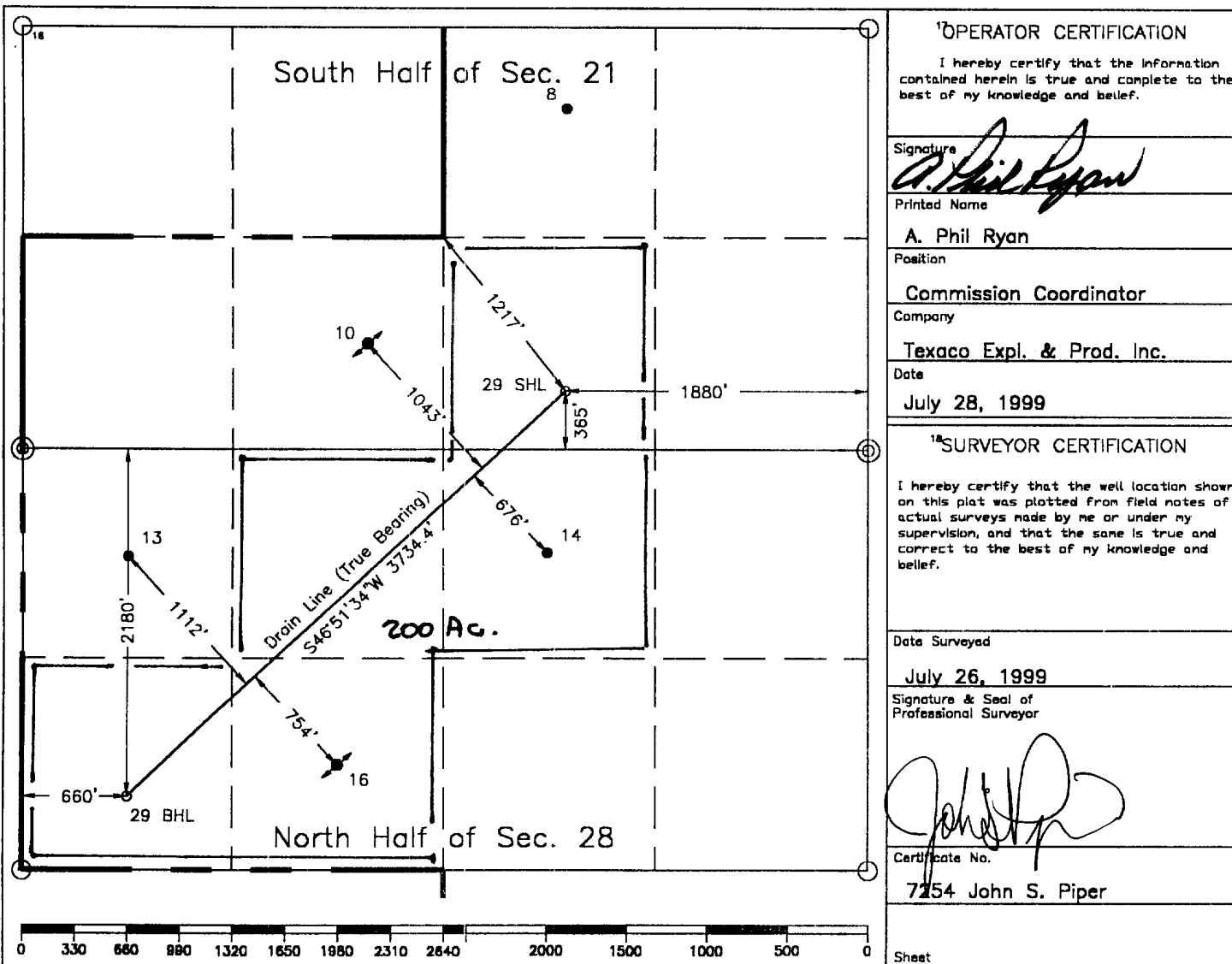
¹ API Number 30-025-34668		² Pool Code 61760		³ Pool Name Vacuum Abo, North	
⁴ Property Code 1123		⁵ Property Name North Vacuum Abo West Unit			⁶ Well Number 29
⁷ DGRID No. 22351		⁸ Operator Name TEXACO EXPLORATION & PRODUCTION, INC.			⁹ Elevation 4065'

¹⁰ Surface Location									
UL or lot no. 0	Section 21	Township 17-S	Range 34-E	Lot Idn	Feet from the 365'	North/South line South	Feet from the 1880'	East/West line East	⁷ County Lea

¹¹ Bottom Hole Location If Different From Surface									
UL or lot no. E	Section 28	Township 17-S	Range 34-E	Lot Idn	Feet from the 2180'	North/South line North	Feet from the 660'	East/West line West	⁷ County Lea

¹² Dedicated Acres 200	¹³ Joint or Infill	¹⁴ Consolidation Code	¹⁵ Order No.
--------------------------------------	-------------------------------	----------------------------------	-------------------------

NO ALLOWABLE WILL BE ASSIGNED TO THIS COMPLETION UNTIL ALL INTERESTS HAVE BEEN CONSOLIDATED
OR A NON-STANDARD UNIT HAS BEEN APPROVED BY THE DIVISION.



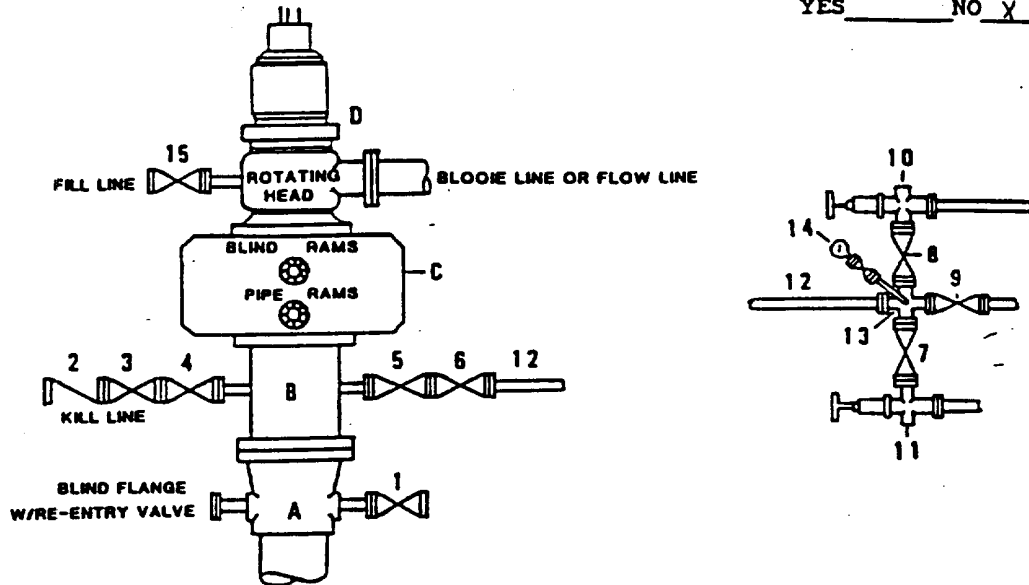
○ = Staked Location ● = Producing Well ↗ = Injection Well ◊ = Water Supply Well ✖ = Plugged & Abandon Well
⊙ = Found Section Corner, 2 or 3" Iron Pipe & GLO B.C. ○ = Found 1/4 Section Corner, 1" Iron Pipe & GLO B.C.

ADDITIONAL INFORMATION ON THE LOCATION

State Plane Coordinates			
Northing	660760.009	658186.695 BHL	Easting 777954.626 775248.406 BHL
Latitude 32°48'50.720" 32°48'25.453" BHL		Longitude 103°33'47.339" 103°34'19.265" BHL	
Zone	North American Datum	Combined Grid Factor	Coordinate File
East	1983	0.9997915	Buckeye.cr5
Drawing File		Field Book	
NVAWU_29		Lea County 18, Pg. 20	

**DRILLING CONTROL
CONDITION II-B 3000 WP
FOR AIR DRILLING OR
WHERE NITROGEN OR AIR BLOWS ARE EXPECTED**

H₂S TRIM REQUIRED
YES _____ NO X



DRILLING CONTROL

MATERIAL LIST - CONDITION II - B

- | | |
|----------------|---|
| A | Texaco Wellhead |
| B | 3000# W.P. drilling spool with a 2" minimum flanged outlet for kill line and 3" minimum flanged outlet for choke line. |
| C | 3000# W.P. Dual ram type preventer, hydraulic operated with 1" steel, 3000# W.P. control lines (where sub-structure height is adequate, 2 - 3000# W.P. single ram type preventers may be utilized). |
| D | Rotating Head with fill up outlet and extended Bloop Line. |
| 1,3,4,
7,8, | 2" minimum 3000# W.P. flanged full opening steel gate valve, or Halliburton Lo Torc Plug valve. |
| 2 | 2" minimum 3000# W.P. back pressure valve. |
| 5,6,9 | 3" minimum 3000# W.P. flanged full opening steel gate valve, or Halliburton Lo Torc Plug valve. |
| 12 | 3" minimum schedule 80, Grade "B", seamless line pipe. |
| 13 | 2" minimum x 3" minimum 3000# W.P. flanged cross. |
| 10,11 | 2" minimum 3000# W.P. adjustable choke bodies. |
| 14 | Cameron Mud Gauge or equivalent (location optional in choke line). |
| 15 | 2" minimum 3000# W.P. flanged or threaded full opening steel gate valve, or Halliburton Lo Torc Plug valve. |



TEXACO, INC.
MIDLAND DIVISION
MIDLAND, TEXAS



SCALE	DATE	EST. NO.	DRG. NO.
DRAWN BY			
CHECKED BY			
APPROVED BY			

EXHIBIT C

ABOVE DATE DOES NOT
INDICATE WHEN
CONFIDENTIAL LOGS
WILL BE RELEASED

ELF

12/30/99
12/3/99
11/30/99