

Submit 3 copies  
to Appropriate  
District Office

State of New Mexico  
Energy, Minerals and Natural Resources Department

Form C-103  
Revised 1-1-89

OIL CONSERVATION DIVISION

DISTRICT I  
P.O. Box 1980, Hobbs, NM 88240

DISTRICT II

P.O. Box Drawer DD, Artesia, NM 88210

DISTRICT III

1000 Rio Brazos Rd., Aztec, NM 87410

P.O. Box 2088  
Santa Fe, New Mexico 87504-2088

WELL API NO.	30-025-34943
5. Indicate Type of Lease	STATE <input checked="" type="checkbox"/> FEE <input type="checkbox"/>
6. State Oil / Gas Lease No.	
7. Lease Name or Unit Agreement Name	CENTRAL VACUUM UNIT
8. Well No.	286
9. Pool Name or Wildcat	VACUUM GRAYBURG-SAN ANDRES

SUNDRY NOTICES AND REPORTS ON WELLS  
(DO NOT USE THIS FORM FOR PROPOSALS TO DRILL OR TO DEEPEN OR PLUG BACK TO A  
DIFFERENT RESERVOIR. USE "APPLICATION FOR PERMIT  
(FORM C-101) FOR SUCH PROPOSALS.)

1. Type of Well: OIL WELL ☒ GAS WELL ☐ OTHER

2. Name of Operator  
TEXACO EXPLORATION & PRODUCTION INC.

3. Address of Operator  
P.O. Box 3109, Midland Texas 79702

4. Well Location  
Unit Letter O: 634 584 Feet From The SOUTH Line and 1333 1383 Feet From The EAST Line  
Section 31 Township 17-S Range 35-E NMPM LEA COUNTY

10. Elevation (Show whether DF, RKB, RT, GR, etc.) 3965'

11. Check Appropriate Box to Indicate Nature of Notice, Report, or Other Data

NOTICE OF INTENTION TO:

PERFORM REMEDIAL WORK ☐

TEMPORARILY ABANDON ☐

PULL OR ALTER CASING ☐

OTHER:

PLUG AND ABANDON ☐

CHANGE PLANS ☐

MOVE SURFACE LOCATION OF WELL ☒

SUBSEQUENT REPORT OF:

REMEDIAL WORK ☐

COMMENCE DRILLING OPERATION ☐

CASING TEST AND CEMENT JOB ☐

OTHER:

ALTERING CASING ☐

PLUG AND ABANDONMENT ☐

12. Describe Proposed or Completed Operations (Clearly state all pertinent details, and give pertinent dates, including estimated date of starting any proposed work) SEE RULE 1103.

MOVE SURFACE LOCATION OF WELL BECAUSE OF EXISTING MAJOR TRUNK LINE.

THE SURFACE LOCATION WAS MOVED 50' SOUTH AND 50' WEST.

\* NEW SURFACE LOCATION IS AS FOLLOWS: UNIT LETTER O, 584' FSL & 1383' FEL, SECTION 31, T-17-S, R-35-E, LEA COUNTY, NEW MEXICO. C-102 ATTACHED.

NOTE: AS PER MR. CHRIS WILLIAMS, THE LOCATION WAS NOT MOVED CLOSER TO THE LEASE LINE; THEREFORE, HE WOULD APPROVE THE NEW LOCATION AND ATTACH TO THE UNORTHODOX LOCATION APPROVAL.

UNORTHODOX LOCATION

THERE ARE NO OTHER OPERATORS IN THIS QUARTER-QUARTER SECTION.

I hereby certify that the information above is true and complete to the best of my knowledge and belief.

SIGNATURE A. Phil Ryan TITLE Commission Coordinator DATE 3/6/2000

TYPE OR PRINT NAME A. Phil Ryan Telephone No. 688-4606

(This space for State Use)  
APPROVED BY Chris Williams DISTRICT 1 SUPERVISOR TITLE \_\_\_\_\_ DATE MAR 08 2000

CONDITIONS OF APPROVAL, IF ANY:

DeSoto/Nichols 10-94 ver 2.0



DISTRICT 1  
P. O. Box 1980, Hobbs, NM 88240

State of New Mexico  
Energy, Minerals and Natural Resources Department

Form C-102  
Revised February 10, 1994

DISPATCH  
P. O. Drawer DD, Artesia, NM 88210

Instructions on back

DISTRICT III  
1000 Rio Brazos Rd., Aztec, NM 87410

OIL CONSERVATION DIVISION  
PO Box 2088  
Santa Fe, NM 87504-2088

Submit to Appropriate District Office

DISTRICT IV  
P. O. Box 2088, Santa Fe, NM 87504-2088

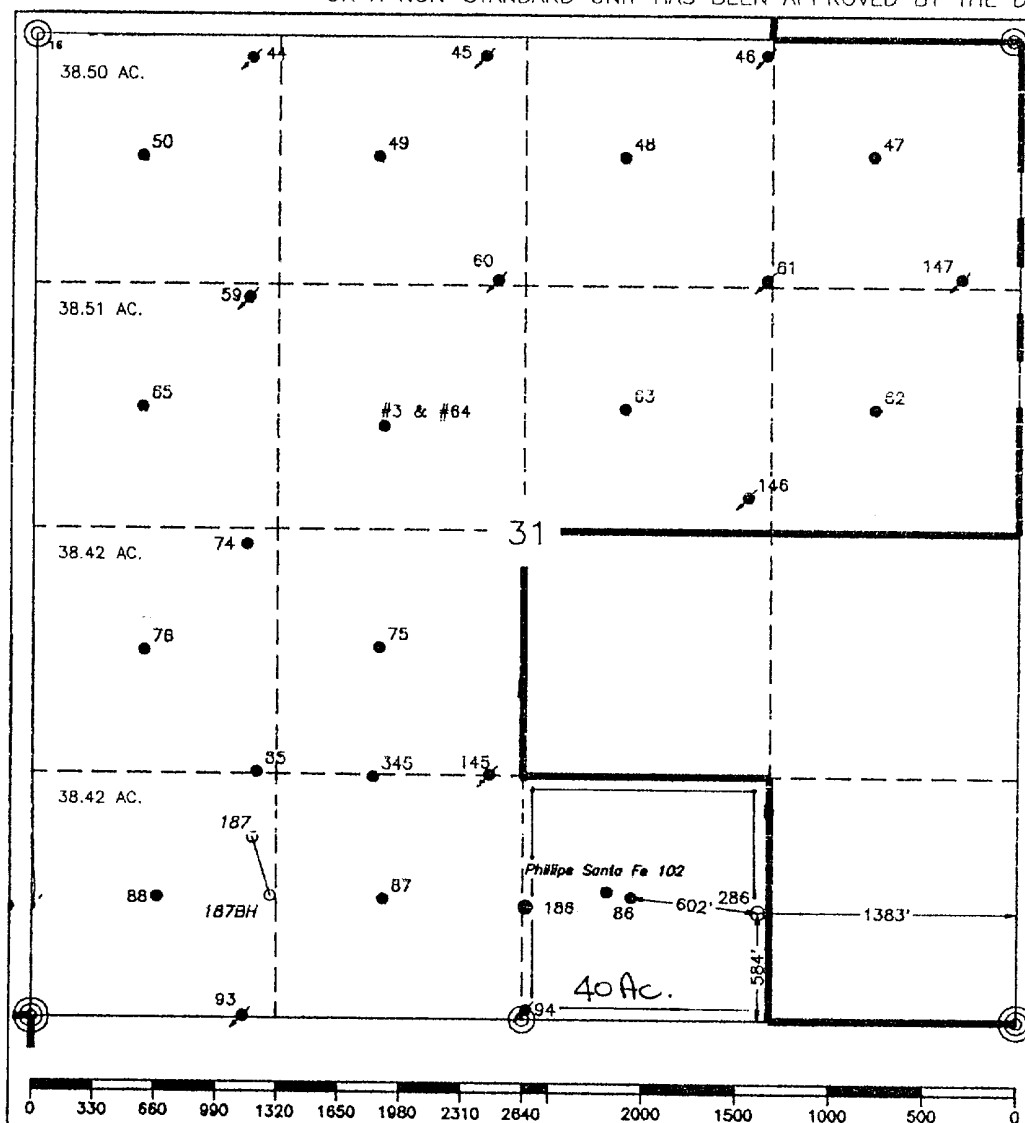
State Lease-4 copies  
Fee Lease-3 copies

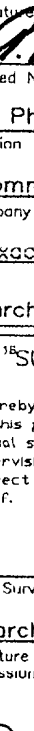
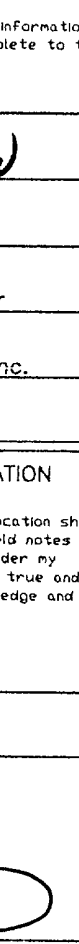
☐ AMENDED REPORT

## WELL LOCATION AND ACREAGE DEDICATION PLAT

<sup>1</sup> API Number		<sup>2</sup> Pool Code		<sup>3</sup> Pool Name Vacuum Grayburg-San Andres					
<sup>4</sup> Property Code		<sup>5</sup> Property Name Central Vacuum Unit					<sup>6</sup> Well Number 286		
<sup>7</sup> UGRI# No. 22351		<sup>8</sup> Operator Name TEXACO EXPLORATION & PRODUCTION, INC.					<sup>9</sup> Elevation 3965'		
<sup>10</sup> Surface Location									
UL or lot no. O	Section 31	Township 17-S	Range 35-E	Lot Idn	Feet from the 584'	North/South line South	Feet from the 1383'	East/West line East	<sup>7</sup> County Lea
<sup>11</sup> Bottom Hole Location if Different From Surface									
UL or lot no.	Section	Township	Range	Lot Idn	Feet from the	North/South line	Feet from the	East/West line	<sup>7</sup> County
<sup>14</sup> Dedicated Acres 40	<sup>15</sup> Joint or Infill		<sup>16</sup> Consolidation Code		<sup>17</sup> Order No.				

NO ALLOWABLE WILL BE ASSIGNED TO THIS COMPLETION UNTIL ALL INTERESTS HAVE BEEN CONSOLIDATED OR A NON-STANDARD UNIT HAS BEEN APPROVED BY THE DIVISION.



<sup>17</sup> OPERATOR CERTIFICATION	
I hereby certify that the information contained herein is true and complete to the best of my knowledge and belief.	
Signature	
Printed Name	A. Phil Ryan
Position	Commission Coordinator
Company	Texaco Expl. & Prod. Inc.
Date	March 6, 2000
<sup>18</sup> SURVEYOR CERTIFICATION	
I hereby certify that the well location shown on this plat was plotted from field notes of actual surveys made by me or under my supervision, and that the same is true and correct to the best of my knowledge and belief.	
Date Surveyed	March 6, 2000
Signature & Seal of Professional Surveyor	
Certificate No.	7254 John S. Piper
Sheet	

○ = Staked Location   ● = Producing Well   = Injection Well   ⊙ = Water Supply Well   ⊕ = Plugged & Abandon Well  
 ⊙ = Found Section Corner, 2 or 3" Iron Pipe & GLO B.C.   ○ = Found /4 Section Corner, 1" Iron Pipe & GLO B.C.

### ADDITIONAL INFORMATION ON THE LOCATION

State Plane Coordinates			
Northing	650,638.47'	Easting	799,600.42'
Latitude 32° 10' 08.975"		Longitude 103° 29' 34.661"	
Zone	North American Datum	Combined Grid Factor	Coordinate File
East	1983	0.99979145	Buckeye.cr5
Drawing File		Field Book	
CVU_286.dwg		Lea Co. F.B. 17, Pg. 53	

