

District I
PO Box 1980, Hobbs, NM 88241-1980
District II
811 South First, Artesia, NM 88210
District III
1000 Rio Brazos Rd., Aztec, NM 87410
District IV
2040 South Pacheco, Santa Fe, NM 87505

State of New Mexico
Oil, Minerals & Natural Resources Department

OIL CONSERVATION DIVISION
2040 South Pacheco
Santa Fe, NM 87505

Form C-101
Revised October 18, 1994
Instructions on back
Submit to Appropriate District Office
State Lease - 6 Copies
Fee Lease - 5 Copies

☐ AMENDED REPORT

APPLICATION FOR PERMIT TO DRILL, RE-ENTER, DEEPEN, PLUGBACK, OR ADD A ZONE

| | | |
|---|---|--|
| ¹ Operator Name and Address. Louis Dreyfus Natural Gas Corporation 14000 Quail Springs Parkway, Suite 600 Oklahoma City, OK 73134 | | ² OGRID Number 025773 |
| | | ³ API Number 30 - 0 25-35054 |
| ⁴ Property Code 26044 | ⁵ Property Name Toro "16" State | ⁶ Well No. 1 |

⁷ Surface Location

| UL or lot no. | Section | Township | Range | Lot Idn | Feet from the | North/South line | Feet from the | East/West line | County |
|---------------|---------|----------|-------|---------|---------------|------------------|---------------|----------------|--------|
| M | 16 | 19S | 35E | | 810 | South | 810 | West | Lea |

⁸ Proposed Bottom Hole Location If Different From Surface

| UL or lot no. | Section | Township | Range | Lot Idn | Feet from the | North/South line | Feet from the | East/West line | County |
|---|---------|----------|-------|---------|-------------------------------|------------------|---------------|----------------|--------|
| | | | | | | | | | |
| ⁹ Proposed Pool 1 Southeast Scharb (Wolfcamp) | | | | | ¹⁰ Proposed Pool 2 | | | | |

| | | | | |
|-----------------------------------|---|-----------------------------------|---------------------------------------|--|
| ¹¹ Work Type Code N | ¹² Well Type Code O | ¹³ Cable/Rotary R | ¹⁴ Lease Type Code 25 | ¹⁵ Ground Level Elevation 3811 |
| ¹⁶ Multiple N | ¹⁷ Proposed Depth 11,300' | ¹⁸ Formation Morrow | ¹⁹ Contractor Patterson | ²⁰ Spud Date 6/30/00 |

²¹ Proposed Casing and Cement Program

| Hole Size | Casing Size | Casing weight/foot | Setting Depth | Sacks of Cement | Estimated TOC |
|-----------|-------------|--------------------|---------------|-----------------|---------------|
| 17 1/2" | 13 3/8" | 54.5# | 600' | 480 sks | Surface |
| 11" | 8 5/8" | 36# | 5,300' | 1800 sks | Surface |
| 7 7/8" | 5 1/2" | 17# | 11,300' | 925 sks | 7000' |

²² Describe the proposed program. If this application is to DEEPEN or PLUG BACK give the data on the present productive zone and proposed new productive zone. Describe the blowout prevention program, if any. Use additional sheets if necessary.

1. Drill 17 1/2" hole to \pm 600'. Run 13 3/8" csg. and cement to surface w/480 sks. cement.
2. Drill 11" hole to \pm 5,300'. Set 8 5/8" csg. and cement to surface w/1800 sks cement.
3. Drill 7 7/8" hole to \pm 11,300'. Run 5 1/2" csg. and cement to 7000' w/925 sks cement.

See attached "Exhibit 6" for BOP assembly.

Permit Expires 1 Year From Approval
Date Unless Drilling Underway

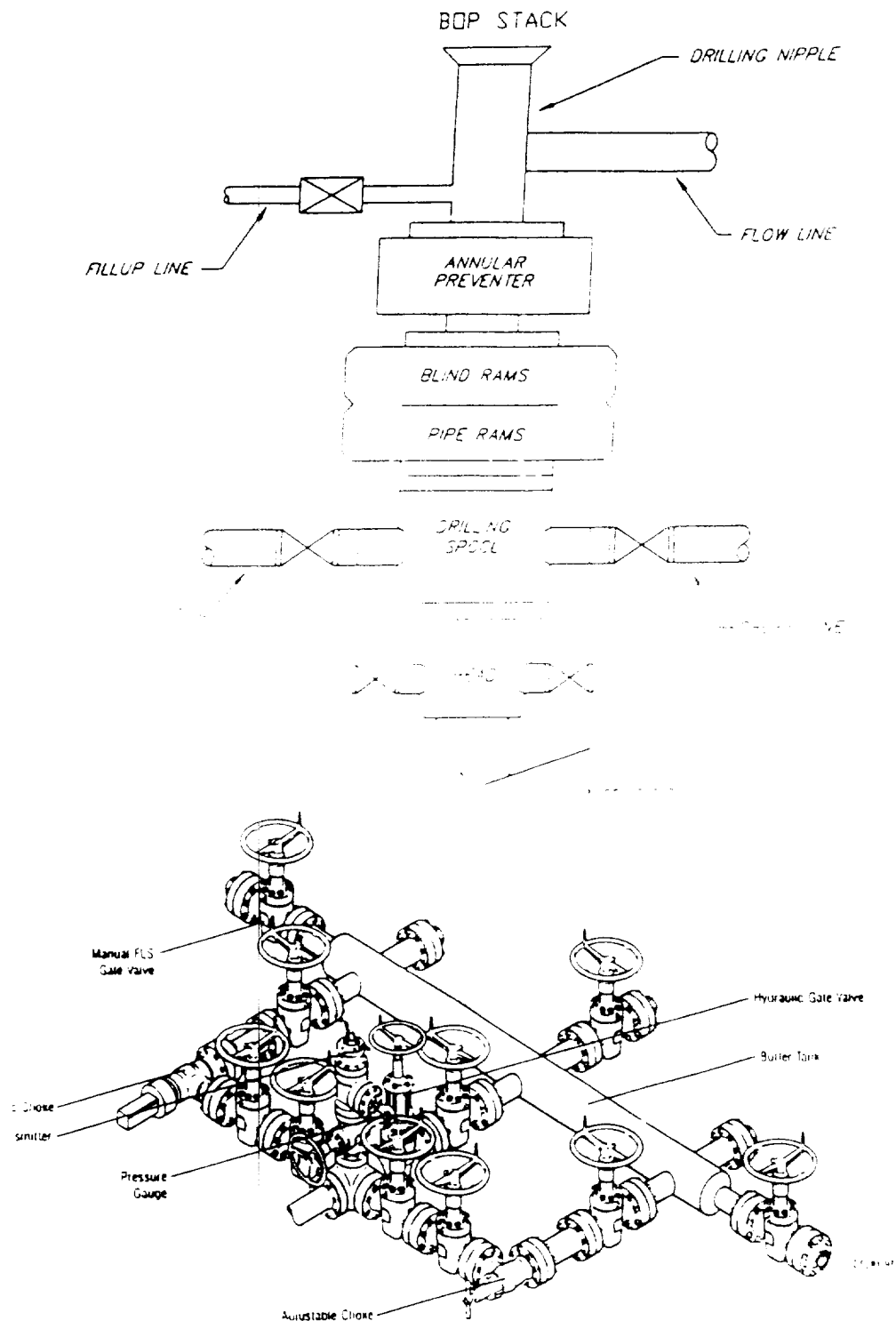
| | | | |
|---|-----------------------|---|------------------|
| ²³ I hereby certify that the information given above is true and complete to the best of my knowledge and belief. Signature: <i>Carla Christian</i> | | OIL CONSERVATION DIVISION | |
| Printed name: Carla Christian | | Approved by: | |
| Title: Regulatory Technician | | Title: | |
| Date: 6/9/00 | Phone: (405) 749-5263 | Approval Date: | Expiration Date: |
| | | Conditions of Approval : Attached <input type="checkbox"/> | |

5/10

MP

Exhibit 6

TYPICAL 5,000 p.s.i. BLOWOUT PREVENTER & CHOKE MANIFOLD SCHEMATIC



Typical Choke Manifold Designed for Land Drilling Applications

DISTRICT I
1625 N. French Dr., Hobbs, NM 88240

DISTRICT II
811 South First, Artesia, NM 88210

DISTRICT III
1000 Rio Brazos Rd., Aztec, NM 87410

DISTRICT IV
2040 South Pacheco, Santa Fe, NM 87505

State of New Mexico
Energy, Minerals and Natural Resources Department

Form C-102
Revised March 17, 1999

Submit to Appropriate District Office
State Lease - 4 Copies
Fee Lease - 3 Copies

OIL CONSERVATION DIVISION

2040 South Pacheco
Santa Fe, New Mexico 87504-2088

☐ AMENDED REPORT

WELL LOCATION AND ACREAGE DEDICATION PLAT

| | | |
|-----------------------------------|--|--|
| API Number <u>30-025-35054</u> | Pool Code 55650 | Pool Name Southeast Scharb (Wolfcamp) |
| Property Code <u>26044</u> | Property Name TORO "16" STATE | Well Number 1 |
| OGRID No. 025773 | Operator Name LOUIS DREYFUS NATURAL GAS CORPORATION | Elevation 3811' |

Surface Location

| UL or lot No. | Section | Township | Range | Lot Idn | Feet from the | North/South line | Feet from the | East/West line | County |
|---------------|---------|----------|-------|---------|---------------|------------------|---------------|----------------|--------|
| M | 16 | 19 S | 35 E | | 810 | SOUTH | 810 | WEST | LEA |

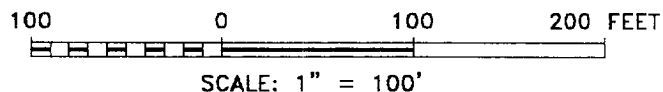
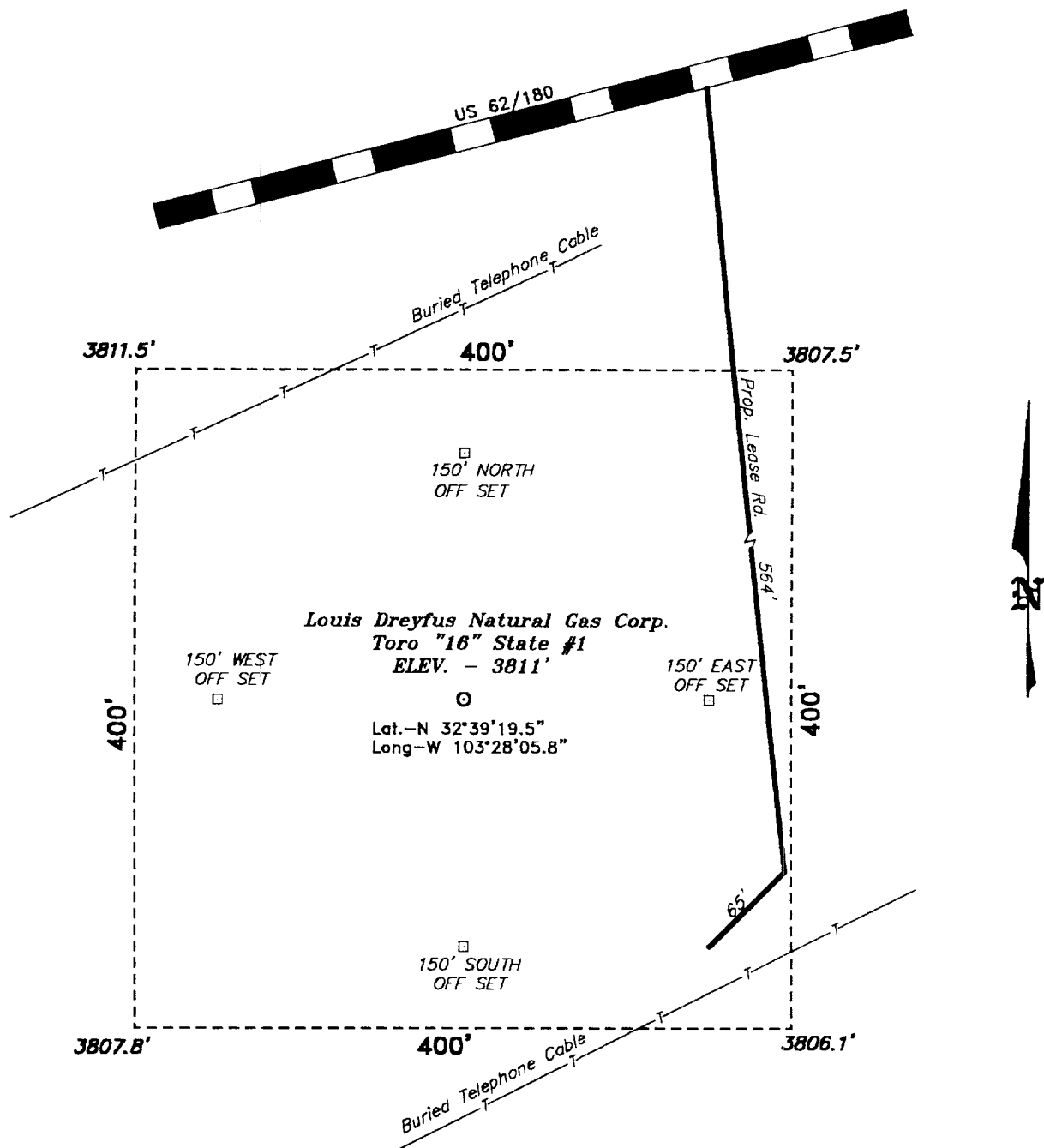
Bottom Hole Location If Different From Surface

| UL or lot No. | Section | Township | Range | Lot Idn | Feet from the | North/South line | Feet from the | East/West line | County |
|-----------------------|----------------------|--------------------|-----------|---------|---------------|------------------|---------------|----------------|--------|
| | | | | | | | | | |
| Dedicated Acres 40 | Joint or Infill N | Consolidation Code | Order No. | | | | | | |

NO ALLOWABLE WILL BE ASSIGNED TO THIS COMPLETION UNTIL ALL INTERESTS HAVE BEEN CONSOLIDATED
OR A NON-STANDARD UNIT HAS BEEN APPROVED BY THE DIVISION

| | |
|--|--|
| | OPERATOR CERTIFICATION I hereby certify the information contained herein is true and complete to the best of my knowledge and belief. <u>Carla Christian</u> Signature Carla Christian Printed Name Regulatory Technician Title June 9, 2000 Date |
| | SURVEYOR CERTIFICATION I hereby certify that the well location shown on this plat was plotted from field notes of actual surveys made by me or under my supervision, and that the same is true and correct to the best of my belief. May 30, 2000 Date Surveyed Signature of Gary L. Jones Professional Surveyor Professional Surveyor 7977 Certificate No. 0280 7977 BASIN SURVEYS |

**SECTION 16, TOWNSHIP 19 SOUTH, RANGE 35 EAST, N.M.P.M.,
LEA COUNTY, NEW MEXICO.**



Directions to Location:

FROM THE JUNCTION OF US HWY 62/180 AND STATE HWY 529, GO WEST ON HWY 62/180 APPROX. 5.75 MILES TO A PROPOSED ROAD WHICH LIES NORTH 564 FEET OF THE PROPOSED WELL LOCATION.

BASIN SURVEYS P.O. BOX 1786-HOBBS, NEW MEXICO

W.O. Number: 0280 Drawn By: **K. GOAD**

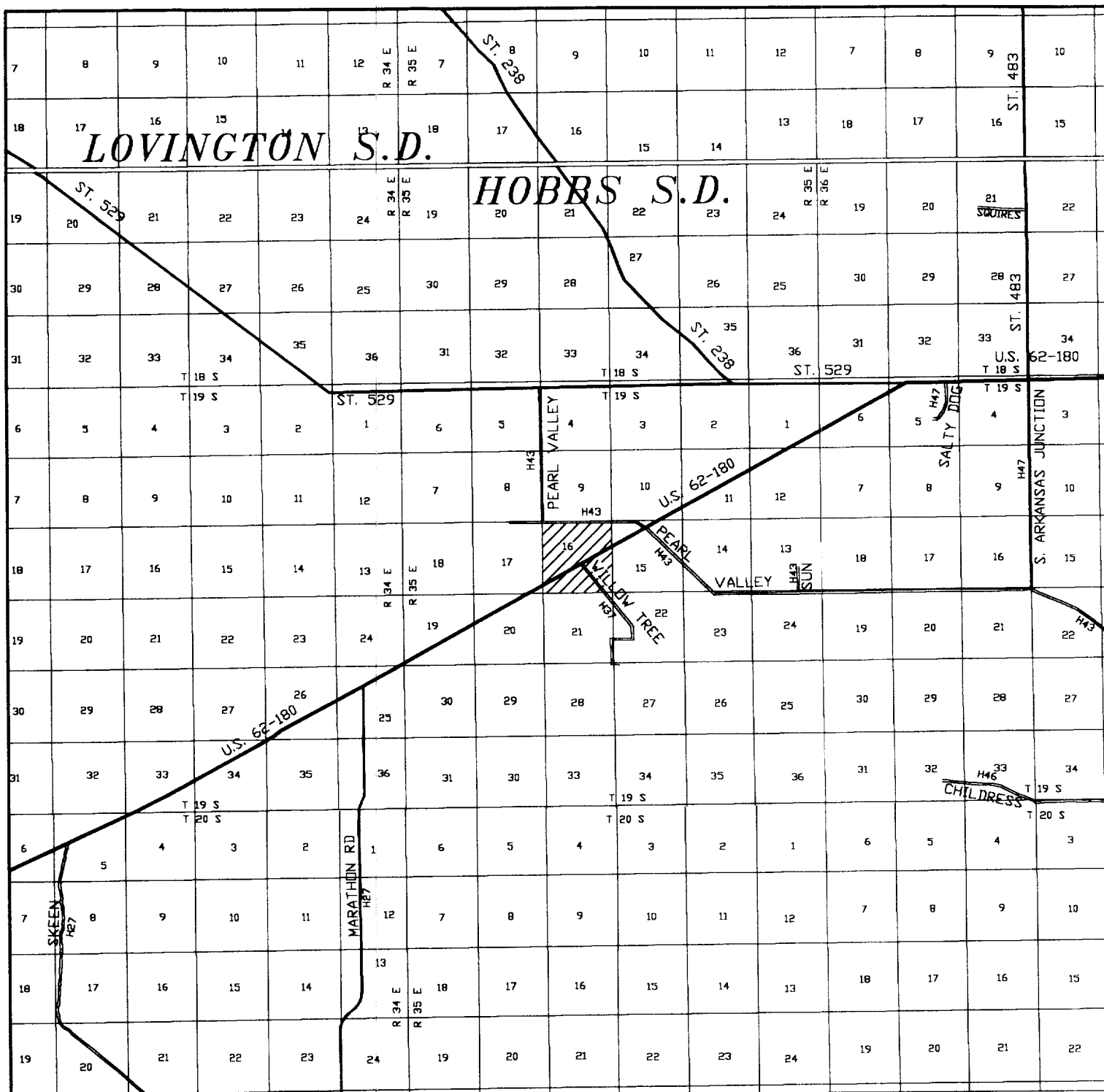
Date: 06-07-2000 Disk: KJG #122 - 0280A.DWG

Louis Dreyfus Natural Gas Corp.

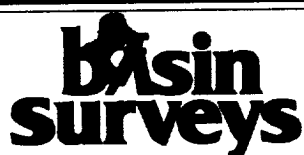
REF: Toro "16" State #1 / Well Pad Topo

THE TORO "16" STATE No. 1 LOCATED 810' FROM THE SOUTH LINE AND 810' FROM THE WEST LINE OF SECTION 16, TOWNSHIP 19 SOUTH, RANGE 35 EAST, N.M.P.M., LEA COUNTY, NEW MEXICO.

Survey Date: 05-30-2000 Sheet 1 of 1 Sheets



TORO "16" STATE #1
 Located at 810' FSL and 810' FWL
 Section 16, Township 19 South, Range 35 East,
 N.M.P.M., Lea County, New Mexico.



P.O. Box 1786
 1120 N. West County Rd.
 Hobbs, New Mexico 88241
 (505) 393-7316 - Office
 (505) 392-3074 - Fax
 basinsurveys.com

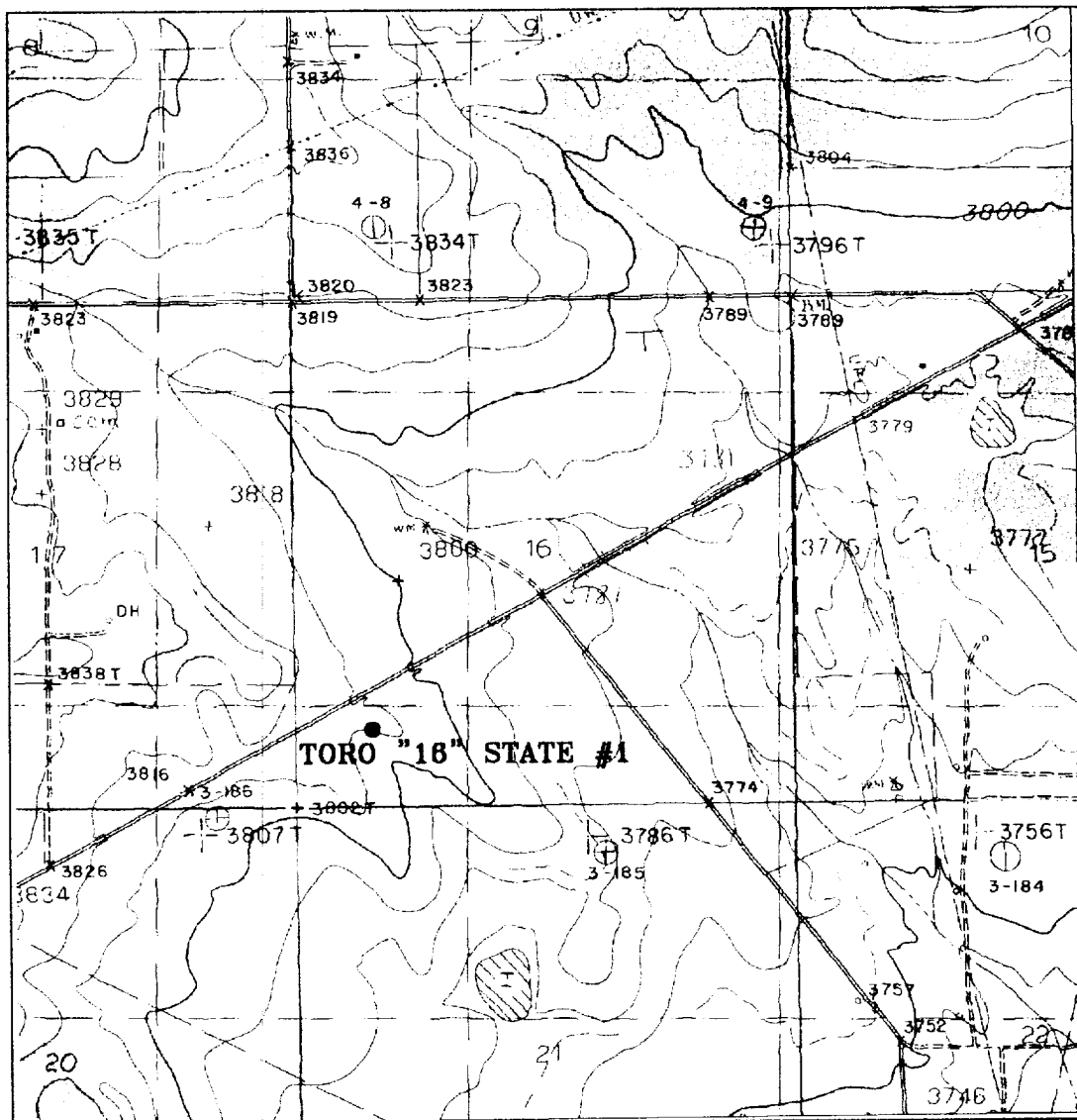
W.O. Number: 0280AA - KJG #122

Survey Date: 05-30-2000

Scale: 1" = 2 miles

Date: 06-07-2000

LOUIS DREYFUS
 NATURAL GAS
 CORPORATION



TORO "16" STATE #1

Located at 810' FSL and 810' FWL
 Section 16, Township 19 South, Range 35 East,
 N.M.P.M., Lea County, New Mexico.

basin
surveys

focused on excellence
 in the oilfield

P.O. Box 1786
 1120 N. West County Rd.
 Hobbs, New Mexico 88241
 (505) 393-7316 - Office
 (505) 392-3074 - Fax
basinsurveys.com

W.O. Number: 0280AA - KJG #122

Survey Date: 05-30-2000

Scale: 1" = 2000'

Date: 06-07-2000

LOUIS DREYFUS
NATURAL GAS
CORPORATION

ABOVE DATE DOES NOT
INDICATE WHEN
CONFIDENTIAL LOGS
WILL BE RELEASED

ELF

Received
Date
0-0