

District I
PO Box 1980, Hobbs, NM 88241-1980
District II
811 South First, Artesia, NM 88210
District III
1000 Rio Brazos Rd., Aztec, NM 87410
District IV
2040 South Pacheco, Santa Fe, NM 87505

State of New Mexico
Geology, Minerals & Natural Resources Department

OIL CONSERVATION DIVISION
2040 South Pacheco
Santa Fe, NM 87505

Form C-101
Revised October 18, 1994
Instructions on back
Submit to Appropriate District Office
State Lease - 6 Copies
Fee Lease - 5 Copies

☒ AMENDED REPORT

APPLICATION FOR PERMIT TO DRILL, RE-ENTER, DEEPEN, PLUGBACK, OR ADD A ZONE

¹ Operator Name and Address. Louis Dreyfus Natural Gas Corporation 14000 Quail Springs Parkway, Suite 600 Oklahoma City, OK 73134		² OGRID Number 025773
		³ API Number 30-025-35094
⁴ Property Code 24884 25324	⁵ Property Name Toro "22"	⁶ Well No. 2

⁷ Surface Location									
UL or lot no.	Section	Township	Range	Lot Idn	Feet from the	North/South line	Feet from the	East/West line	County
N	22	19S	35E		2150	West	660	South	Lea

⁸ Proposed Bottom Hole Location If Different From Surface									
UL or lot no.	Section	Township	Range	Lot Idn	Feet from the	North/South line	Feet from the	East/West line	County

⁹ Proposed Pool 1 Klein Ranch; Southeast Scharb (Wolfcamp)	¹⁰ Proposed Pool 2
---	-------------------------------

¹¹ Work Type Code N	¹² Well Type Code O	¹³ Cable/Rotary R	¹⁴ Lease Type Code F	¹⁵ Ground Level Elevation 3740
¹⁶ Multiple N	¹⁷ Proposed Depth 11,200'	¹⁸ Formation Wolfcamp	¹⁹ Contractor Patterson	²⁰ Spud Date 7/21/00

²¹ Proposed Casing and Cement Program					
Hole Size	Casing Size	Casing weight/foot	Setting Depth	Sacks of Cement	Estimated TOC
17 1/2"	13 3/8"	48#	600'	480 sks	Surface
11"	8 5/8"	36#	5,300'	1800 sks	Surface
7 7/8"	5 1/2"	17#	11,200'	925 sks	7000'

²² Describe the proposed program. If this application is to DEEPEN or PLUG BACK give the data on the present productive zone and proposed new productive zone. Describe the blowout prevention program, if any. Use additional sheets if necessary.

1. Drill 17 1/2" hole to \pm 600'. Run 13 3/8" csg. and cement to surface w/480 sks. cement.
2. Drill 11" hole to \pm 5,300'. Set 8 5/8" csg. and cement to surface w/1800 sks cement.
3. Drill 7 7/8" hole to \pm 11,200'. Run 5 1/2" csg. and cement to 7000' w/925 sks cement.

See attached "Exhibit 6" for BOP assembly.

Permit Expires 1 Year From Approval
Date Unless Drilling Underway

²³ I hereby certify that the information given above is true and complete to the best of my knowledge and belief. Signature: <u>Carla Christian</u>		OIL CONSERVATION DIVISION	
Printed name: Carla Christian			
Title: Regulatory Technician		Approved by: <u>ORIGINAL</u> GARY WINK FIELD DEPT.	
Date: 6/13/00		Approval Date: <u>6/13/00</u> Expiration Date:	
Phone: (405) 749-5263		Conditions of Approval : Attached <input type="checkbox"/>	

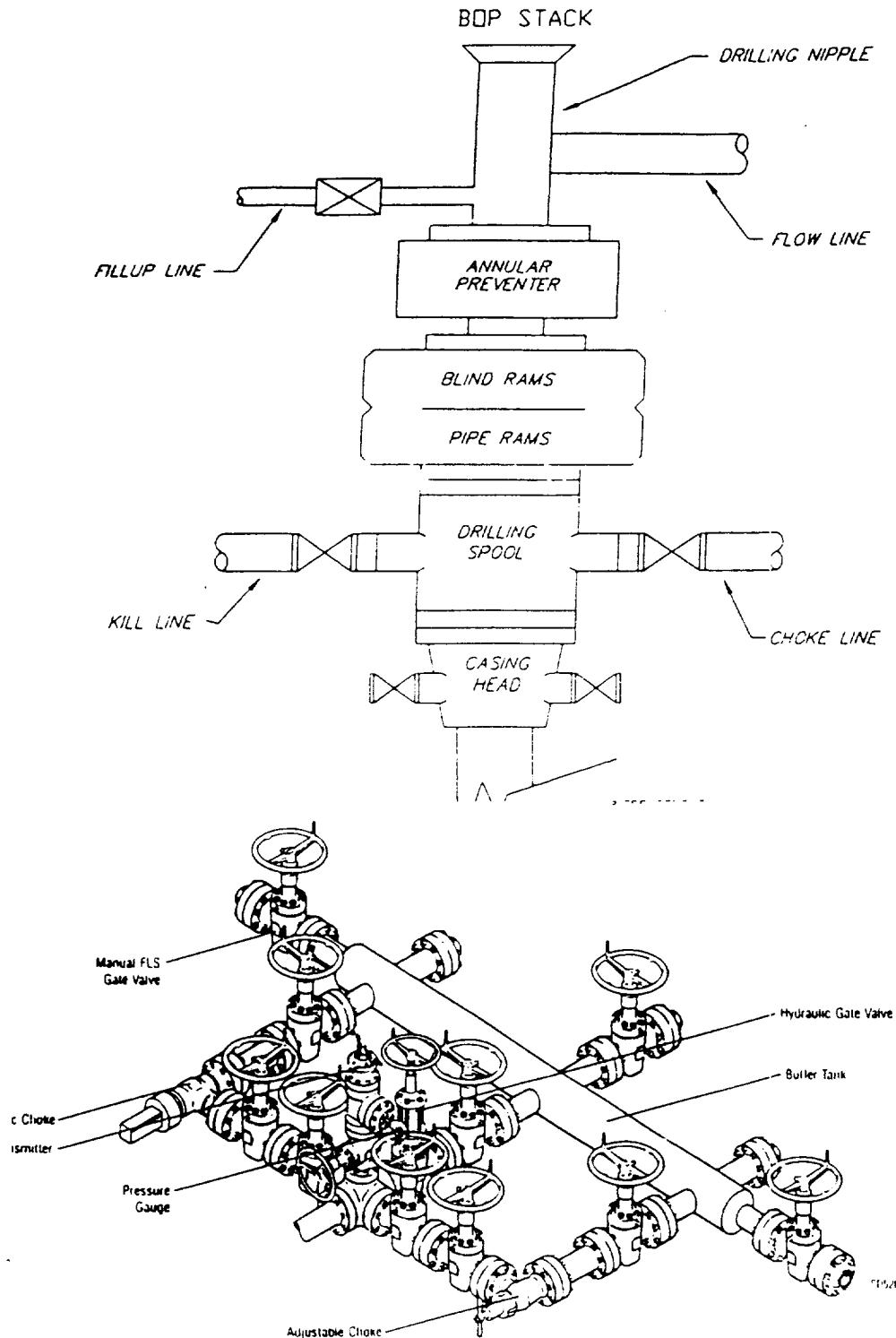
200

4

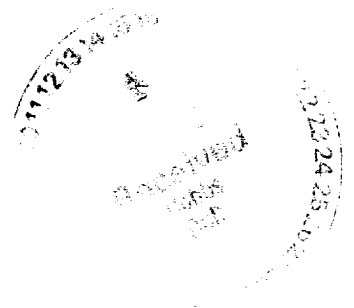
MP

Exhibit 6

TYPICAL 5,000 p.s.i. BLOWOUT PREVENTER & CHOKE MANIFOLD SCHEMATIC



Typical Choke Manifold Designed for Land Drilling Applications



DISTRICT I
1825 N. French Dr., Hobbs, NM 88240

DISTRICT II
811 South First, Artesia, NM 88210

DISTRICT III
1000 Rio Brazos Rd., Aztec, NM 87410

DISTRICT IV
2040 South Pacheco, Santa Fe, NM 87506

State of New Mexico
Energy, Minerals and Natural Resources Department

Form C-102
Revised March 17, 1999

Submit to Appropriate District Office
State Lease - 4 Copies
Fee Lease - 3 Copies

OIL CONSERVATION DIVISION

2040 South Pacheco
Santa Fe, New Mexico 87504-2088

☐ AMENDED REPORT

WELL LOCATION AND ACREAGE DEDICATION PLAT

API Number 30-025-35094	Pool Code 55650 96989	Pool Name Klein Ranch; Southeast-Scharb (Wolfcamp)
Property Code 24884 25324	Property Name TORO 22	Well Number 2
OGRID No. 025773	Operator Name LOUIS DREYFUS NATURAL GAS CORPORATION	Elevation 3740

Surface Location

UL or lot No. N	Section 22	Township 19 S	Range 35 E	Lot Idn	Feet from the 2150	North/South line WEST	Feet from the 660	East/West line SOUTH	County LEA
--------------------	---------------	------------------	---------------	---------	-----------------------	--------------------------	----------------------	-------------------------	---------------

Bottom Hole Location If Different From Surface

UL or lot No.	Section	Township	Range	Lot Idn	Feet from the	North/South line	Feet from the	East/West line	County
---------------	---------	----------	-------	---------	---------------	------------------	---------------	----------------	--------

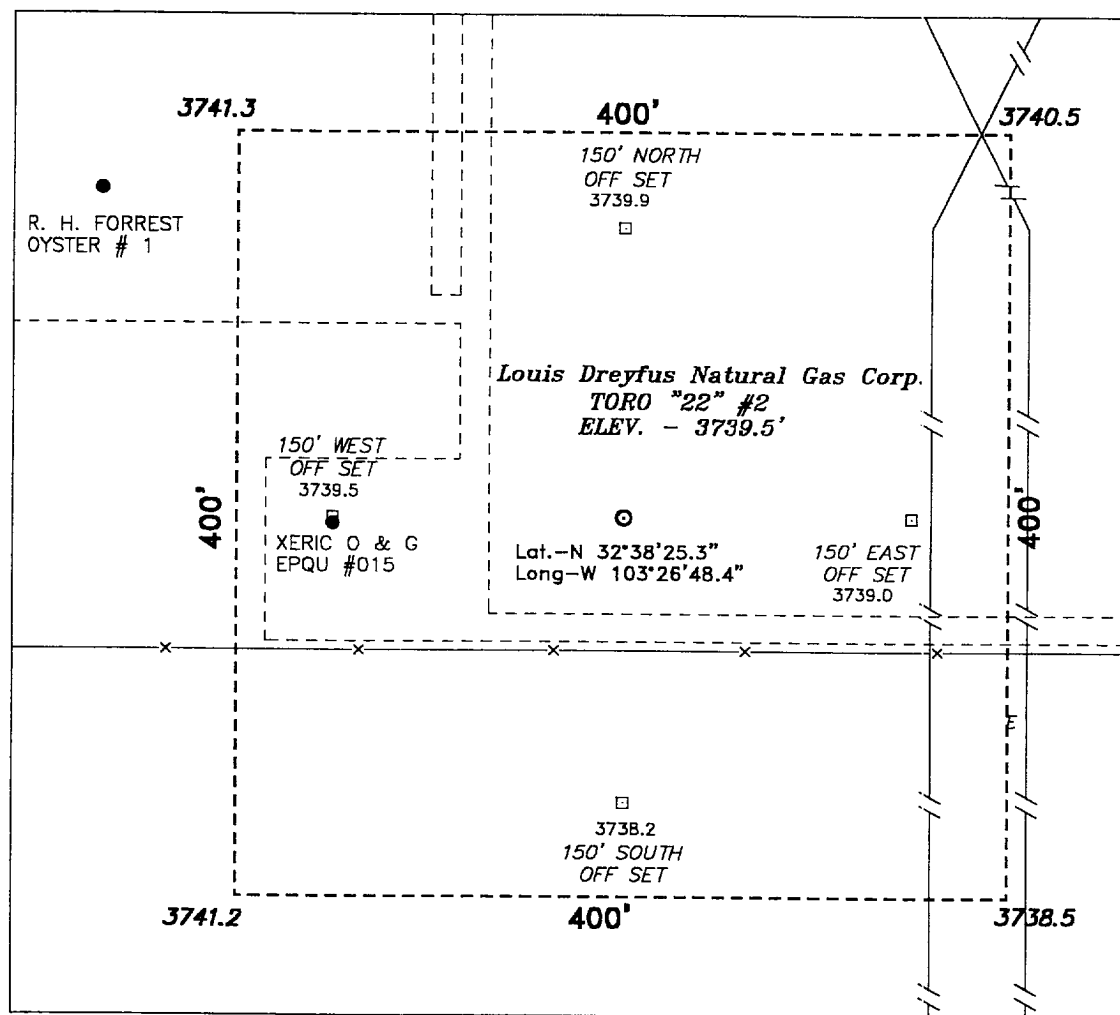
Dedicated Acres 40	Joint or Infill	Consolidation Code	Order No.
-----------------------	-----------------	--------------------	-----------

NO ALLOWABLE WILL BE ASSIGNED TO THIS COMPLETION UNTIL ALL INTERESTS HAVE BEEN CONSOLIDATED
OR A NON-STANDARD UNIT HAS BEEN APPROVED BY THE DIVISION

	OPERATOR CERTIFICATION	
	I hereby certify the the information contained herein is true and complete to the best of my knowledge and belief.	
	Carla Christian Signature	
	Carla Christian Printed Name	
	Regulatory Technician Title	
	July 13, 2000 Date	
	SURVEYOR CERTIFICATION	
	I hereby certify that the well location shown on this plat was plotted from field notes of actual surveys made by me or under my supervision, and that the same is true and correct to the best of my belief.	
	Date Surveyed JULY 13, 2000	
	Signature & Seal of Professional Surveyor GREGORY L. JONES	
	W.C. No. 0381	
	Certification of Professional Surveyor GREGORY L. JONES 7977	
	BASIN SURVEYS	

See Amended Plat

SECTION 22, TOWNSHIP 19 SOUTH, RANGE 35 EAST, N.M.P.M.,
LEA COUNTY, NEW MEXICO.



100 0 100 200 FEET
SCALE: 1" = 100'

Louis Dreyfus Natural Gas Corp.

REF: TORO 22 # 2 / Well Pad Topo

THE TORO 22 # 2 LOCATED 2150' FROM
THE WEST LINE AND 660' FROM THE SOUTH LINE OF
SECTION 22, TOWNSHIP 19 SOUTH, RANGE 35 EAST,
N.M.P.M., LEA COUNTY, NEW MEXICO.

BASIN SURVEYS P.O. BOX 1786-HOBBS, NEW MEXICO

W.O. Number: 0391

Drawn By: G. SHOULTS

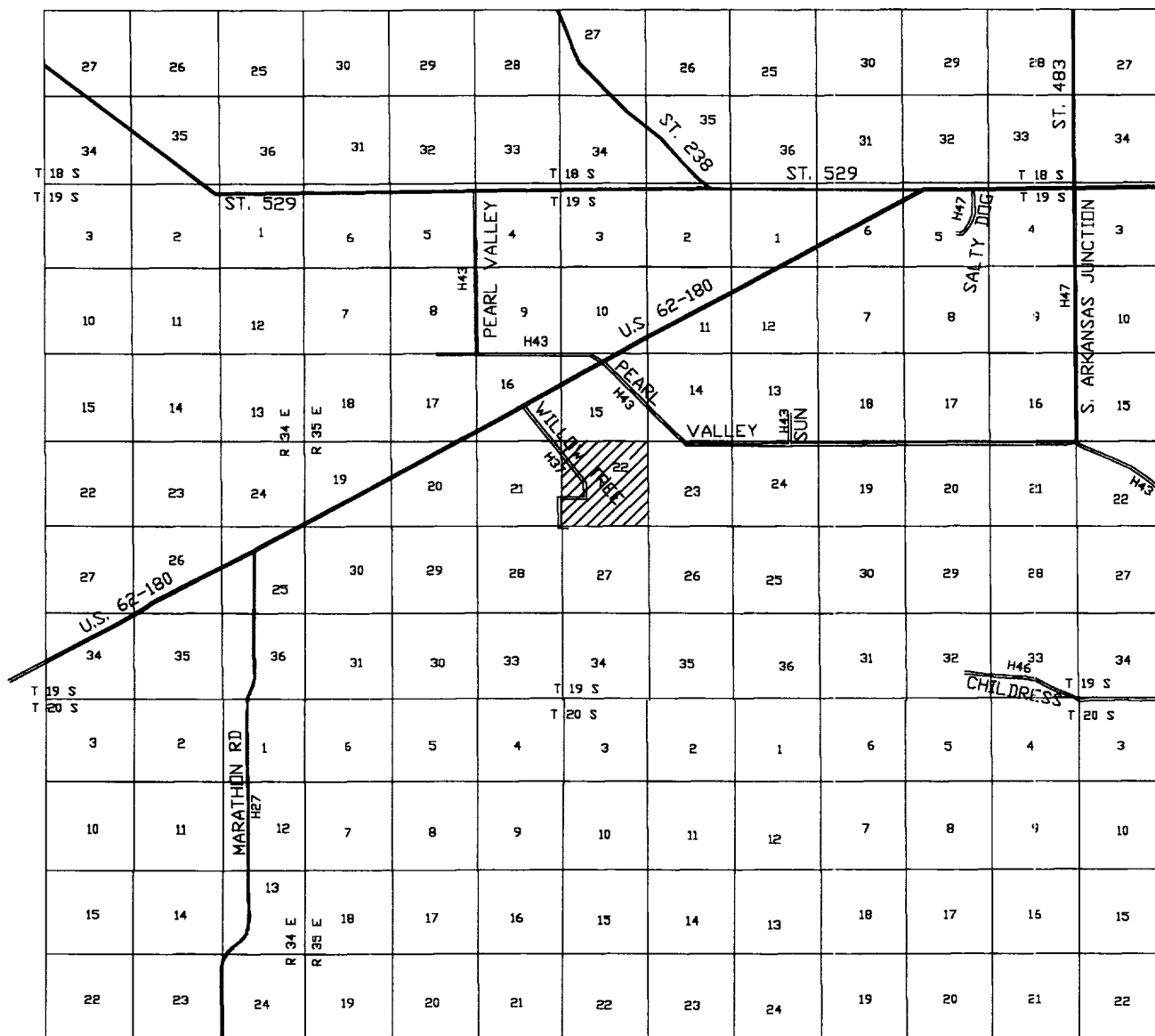
Date: 07-10-2000

Disk: GWS#1 - 0391A.DWG

Survey Date: 07-10-2000

Sheet 1 of 1 Sheets





TORO "22" # 2

Located at 2150' FWL and 660' FSL

Section 22, Township 19 South, Range 35 East,
N.M.P.M., Lea County, New Mexico.

basin
surveys
focused on excellence
in the oilfield

P.O. Box 1786
1120 N. West County Rd.
Hobbs, New Mexico 88241
(505) 393-7316 - Office
(505) 392-3074 - Fax
basinsurveys.com

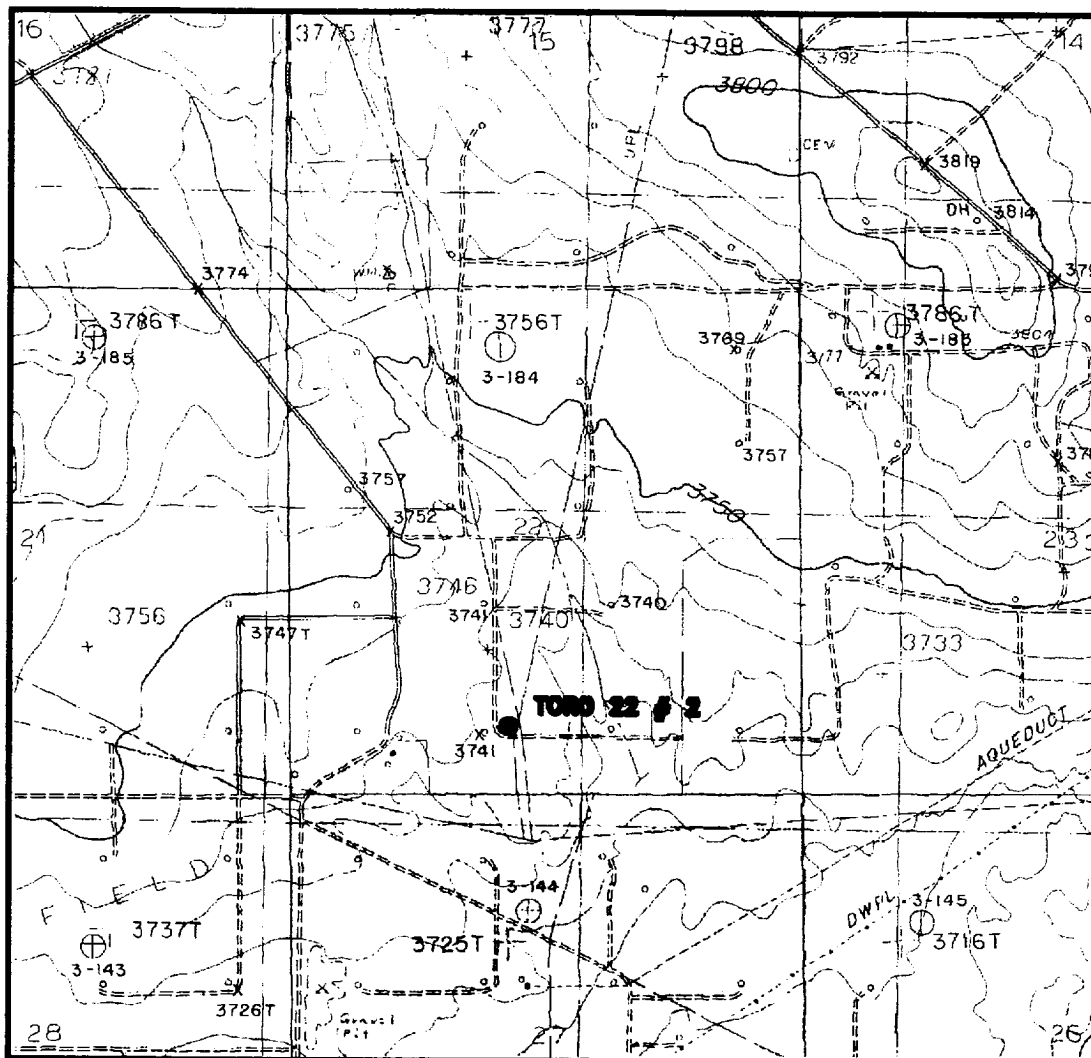
W.O. Number: 0391AA - GWS#1

Survey Date: 07-10-2000

Scale: 1" = 2 miles

Date: 07-11-2000

LOUIS DREYFUS
NATURAL GAS
CORPORATION



TORO "22" # 2

Located at 2150' FWL and 660' FSL
 Section 22, Township 19 South, Range 35 East,
 N.M.P.M., Lea County, New Mexico.

basin
surveys
 focused on excellence
 in the oilfield

P.O. Box 1786
 1120 N. West County Rd.
 Hobbs, New Mexico 88241
 (505) 393-7316 - Office
 (505) 392-3074 - Fax
 basinsurveys.com

W.O. Number: 0391AA - GWS #1

Survey Date: 07-10-2000

Scale: 1" = 2000'

Date: 07-11-2000

LOUIS DREYFUS
NATURAL GAS
CORPORATION

ABOVE DATE DOES NOT
INDICATE WHEN
CONFIDENTIAL LOGS
WILL BE RELEASED

ELF

[Handwritten signature]

